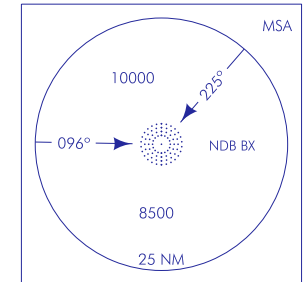
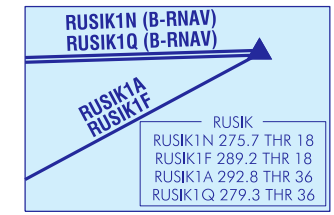


CARTA BAJO AUTORIZACIÓN ATC
CHART UNDER ATC CLEARANCE



CARTA INCLUIDA EN EL ÁREA DE REDUCCIÓN DE VELOCIDAD DE CANARIAS TMA: IAS MAX 250 kt A FL100 Ó BLW. EXC MIL FLT EN MISIONES OPERATIVAS O DE DEFENSA AÉREA O CUANDO SUS CARACTERÍSTICAS DE OPERACIÓN NO LO PERMITAN.
(1) MNM ALT: UTILIZABLE PREVIA AUTORIZACIÓN ATC.

CHART INCLUDED IN CANARIAS TMA SPEED ADJUSTMENT AREA: MAX IAS 250 kt AT FL100 OR BLW, EXC MIL FLT ON OPERATIONAL OR AIR DEFENCE MISSIONS OR WHEN THE OPERATIONAL CHARACTERISTICS DO NOT ALLOW FOR IT.
(1) MNM ALT: USABLE PRIOR ATC CLEARANCE.



CAMBIO: DECLINACIÓN MAGNÉTICA. ACTUALIZACIÓN DE RUMBOS Y RADIALES.
CHANGES: MAGNETIC VARIATION. UPDATE OF HEADINGS AND RADIALS.

INTENCIONADAMENTE EN BLANCO
INTENTIONALLY BLANK

LA PALMA AD

COORDENADAS WAYPOINTS // WAYPOINTS COORDINATES	
WPT	COORD
ARACO (IAF)	28°25'57.1"N 017°27'08.4"W
BRICK	29°35'28.9"N 016°22'22.4"W
FTV DVOR/DME	28°25'51.3"N 013°51'52.2"W
KONBA	31°18'03.0"N 015°18'06.0"W
LARYS	28°52'18.6"N 014°50'03.4"W
LZR DVOR/DME	29°09'56.4"N 013°30'39.5"W
NASOL (IAF)	28°50'25.7"N 017°25'37.9"W
ORTIS	31°24'25.0"N 016°33'24.9"W
RUSIK	28°54'22.0"N 012°48'59.0"W
TERTO	30°06'15.0"N 012°43'02.0"W
TESEL	28°29'17.8"N 016°49'59.7"W
TFN DVOR/DME	28°32'12.9"N 016°16'07.2"W

LLEGADAS POR INSTRUMENTOS - DESCENSO CONTINUO (CDA)

NOTA: CARTA BAJO AUTORIZACIÓN ATC.

PISTA 18

LLEGADA KONBA UNO NOVEMBER (KONBA1N) B-RNAV
KONBA, BRICK, NASOL (IAF).LLEGADA LARYS UNO FOXTROT (LARYS1F)
LARYS, DVOR/DME TFN, NASOL (IAF).LLEGADA ORTIS UNO FOXTROT (ORTIS1F)
ORTIS, BRICK, NASOL (IAF).LLEGADA RUSIK UNO FOXTROT (RUSIK1F)
RUSIK, DVOR/DME FTV, LARYS, DVOR/DME TFN, NASOL (IAF).LLEGADA RUSIK UNO NOVEMBER (RUSIK1N) B-RNAV
RUSIK, LARYS, DVOR/DME TFN, NASOL (IAF).LLEGADA TERTO DOS FOXTROT (TERTO2F)
TERTO, DVOR/DME LZR, LARYS, DVOR/DME TFN, NASOL (IAF).

PISTA 36

LLEGADA KONBA UNO QUEBEC (KONBA1Q) B-RNAV
KONBA, BRICK, ARACO (IAF).LLEGADA LARYS UNO ALPHA (LARYS1A)
LARYS, DVOR/DME TFN, TESEL, ARACO (IAF).LLEGADA ORTIS UNO ALPHA (ORTIS1A) B-RNAV
ORTIS, BRICK, ARACO (IAF).LLEGADA RUSIK UNO ALPHA (RUSIK1A)
RUSIK, DVOR/DME FTV, LARYS, DVOR/DME TFN, TESEL,
ARACO (IAF).LLEGADA RUSIK UNO QUEBEC (RUSIK1Q) B-RNAV
RUSIK, LARYS, DVOR/DME TFN, TESEL, ARACO (IAF).LLEGADA TERTO DOS ALPHA (TERTO2A)
TERTO, DVOR/DME LZR, LARYS, DVOR/DME TFN, TESEL,
ARACO (IAF).

INSTRUMENT ARRIVALS - CONTINUOUS DESCENT (CDA)

NOTE: CHART UNDER ATC CLEARANCE.

RUNWAY 18

KONBA ONE NOVEMBER ARRIVAL (KONBA1N) B-RNAV
KONBA, BRICK, NASOL (IAF).LARYS ONE FOXTROT ARRIVAL (LARYS1F)
LARYS, DVOR/DME TFN, NASOL (IAF).ORTIS ONE FOXTROT ARRIVAL (ORTIS1F)
ORTIS, BRICK, NASOL (IAF).RUSIK ONE FOXTROT ARRIVAL (RUSIK1F)
RUSIK, DVOR/DME FTV, LARYS, DVOR/DME TFN, NASOL (IAF).RUSIK ONE NOVEMBER ARRIVAL (RUSIK1N) B-RNAV
RUSIK, LARYS, DVOR/DME TFN, NASOL (IAF).TERTO TWO FOXTROT ARRIVAL (TERTO2F)
TERTO, DVOR/DME LZR, LARYS, DVOR/DME TFN, NASOL (IAF).

RUNWAY 36

KONBA ONE QUEBEC ARRIVAL (KONBA1Q) B-RNAV
KONBA, BRICK, ARACO (IAF).LARYS ONE ALPHA ARRIVAL (LARYS1A)
LARYS, DVOR/DME TFN, TESEL, ARACO (IAF).ORTIS ONE ALPHA ARRIVAL (ORTIS1A) B-RNAV
ORTIS, BRICK, ARACO (IAF).RUSIK ONE ALPHA ARRIVAL (RUSIK1A)
RUSIK, DVOR/DME FTV, LARYS, DVOR/DME TFN, TESEL,
ARACO (IAF).RUSIK ONE QUEBEC ARRIVAL (RUSIK1Q) B-RNAV
RUSIK, LARYS, DVOR/DME TFN, TESEL, ARACO (IAF).TERTO TWO ALPHA ARRIVAL (TERTO2A)
TERTO, DVOR/DME LZR, LARYS, DVOR/DME TFN, TESEL,
ARACO (IAF).

INTENCIONADAMENTE EN BLANCO
INTENTIONALLY BLANK