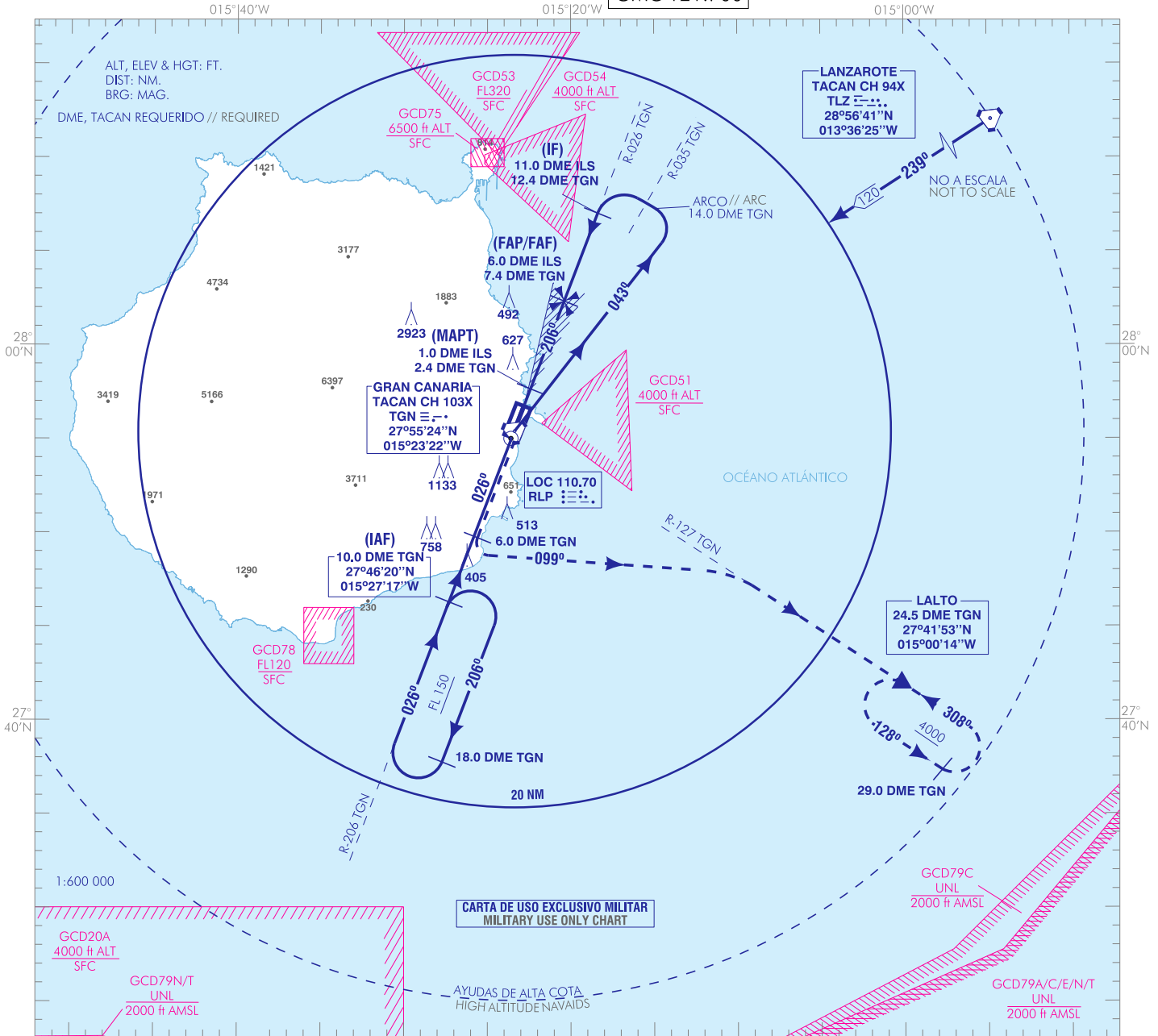


CARTA DE APROXIMACIÓN
POR INSTRUMENTOS-MIPS

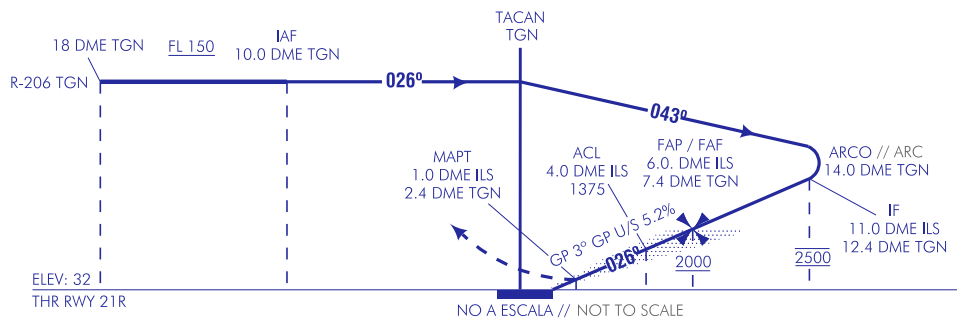
ELEV AD
77
VAR 4°W (2020)

APP 121.300
363.550
TWR 118.300
257.800
GMC 121.700

GRAN CANARIA
HI-TACAN o ILS o LOC Z RWY 21R



FRUSTRADA: SUBIR DIRECTO A 6.0 DME TGN. VIRAR A LA IZQUIERDA A RUMBO 099° PARA INTERCEPTAR R-127 TGN. DIRECTO A LALTO A 4000 PARA INCORPORARSE A LA ESPERA.
MISSED APPROACH: CLIMB DIRECT TO 6.0 DME TGN. TURN LEFT TO HEADING 099° TO INTERCEPT R-127 TGN. DIRECT TO LALTO AT 4000 TO JOIN THE HOLDING.



HGT REF ELEV THR RWY 21R

CAT	C	D	HPMA
S-ILS	337-1.2** 305 (300-1.2)	347-1.2 315 (300-1.2)	286-1.2** 254 (300-1.2)
S-LOC	500-1.6** 468 (500-1.6)	500-2.0** 468 (500-2.0)	
S-TACAN	1160-4.4** 1128 (1100-4.4)		
CIRCUITO CIRCLING	1570-4.8 1493 (1500-4.8)	1460-4.8 1383 (1400-4.8)	

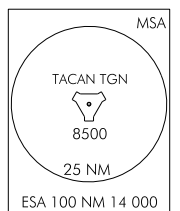
* CUANDO ALS U/S INCREMENTAR VIS. EN 0.4 KM
* WHEN ALS U/S INCREASE VIS BY 0.4 km.

GS	kt	80	100	120	140	160	180
FAP-THR:	min:s						
FAF-MAPT: 5.0 NM	min:s	3:45	3:00	2:30	2:09	1:53	1:40
ROD: 5.2%	ft/min	421	527	632	737	843	948

ALT DME (TGN) FNA		
7	6	5
1880	1560	1250

ALT DME (ILS) FNA			
5	4	3	2
1610	1350	1030	720

TA 6000



CAMBIOS: FREQ APP.
CHANGES: APP FREQ.

INTENCIONADAMENTE EN BLANCO
INTENTIONALLY BLANK