

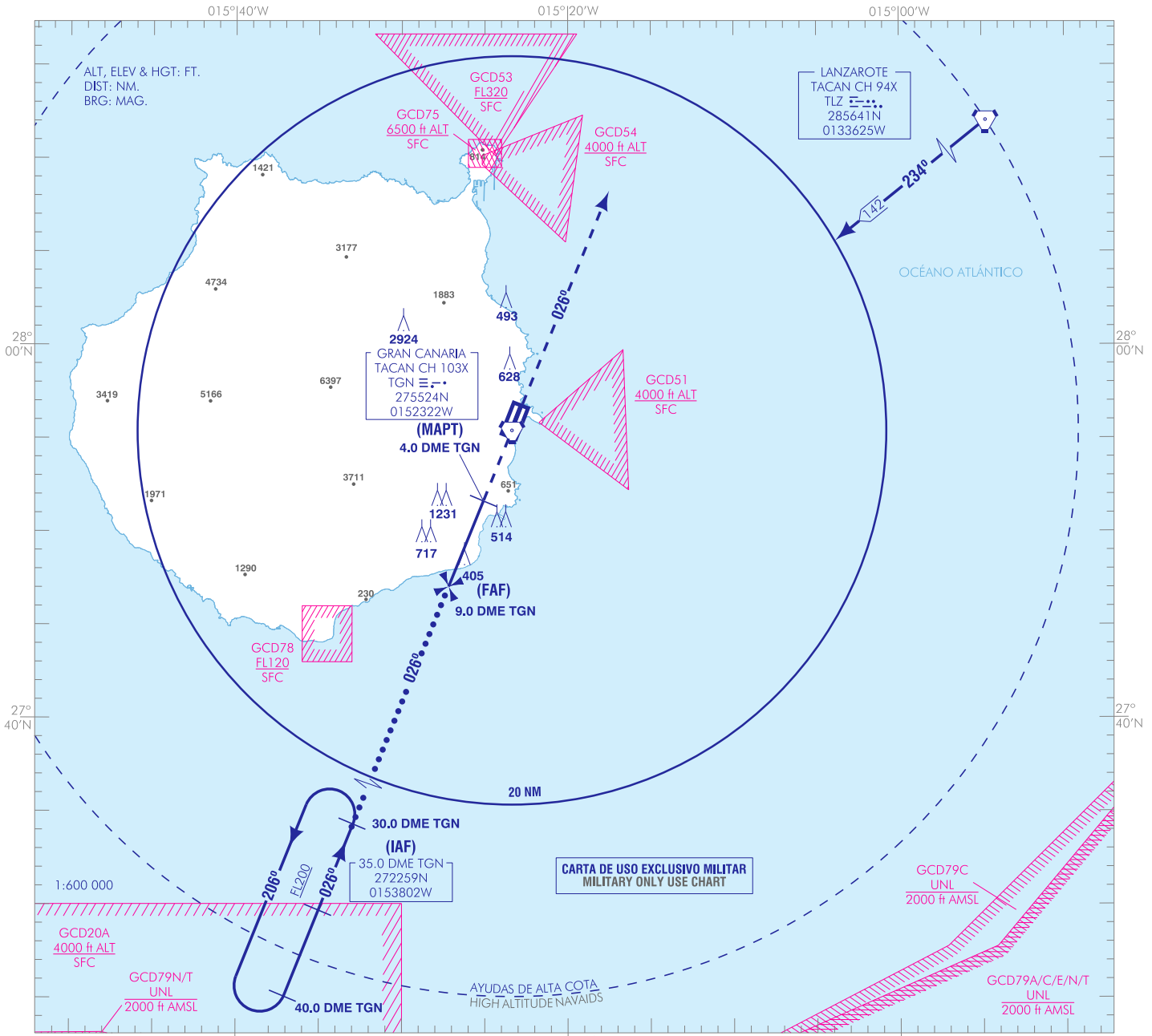
CARTA DE APROXIMACIÓN  
POR INSTRUMENTOS-MIPS

ELEV AD  
77  
VAR 4°W (2020)

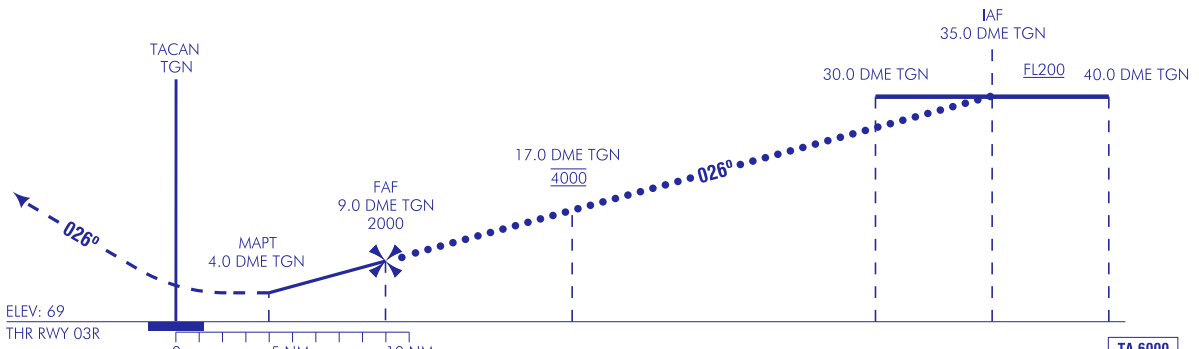
APP 121.300 MHz  
363.550 MHz  
TWR 118.300 MHz  
257.800 MHz

GMC 121.700 MHz  
ATIS 118.600 MHz

GRAN CANARIA  
HI-TACAN A  
RWY 03R



**FRUSTRADA:** SUBIR EN RUMBO MAGNÉTICO 026° A 3000 Y SOLICITAR INSTRUCCIONES.  
**MISSED APCH:** CLIMB ON MAGNETIC HEADING 026° UP TO 3000 AND REQUEST FOR INSTRUCTIONS.



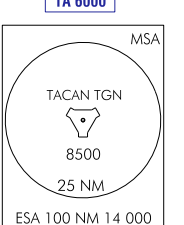
CAMBIOS: RENÚMERICACIÓN, OBSTÁCULOS, FRECUENCIA ATIS.  
CHANGES: RENUMBERING, OBSTACLES, ATIS FREQUENCY.

HGT REF ELEV THR RWY 03R				
CAT	C	D	E	HPMA
S-TACAN	1460/4.0* 1391 (1400-4.0)	NO AUTORIZADO		
CIRCUITO CIRCLING	1460/4.8 1382 (1400-4.8)	NOT AUTHORISED		

\* CUANDO ALS U/S INCREMENTAR VIS EN 0.8 km  
\* WHEN ALS U/S INCREASE VIS IN 0.8 km

GS	kt	80	100	120	140	160	180
FAP-THR:	min:s						
FAF-MAPT:	min:s						
ROD:	ft/min						

ALT DME (ILS) FNA									
13	12	11	10	9	8	7	6	5	4



**INTENCIONADAMENTE EN BLANCO**  
**INTENTIONALLY BLANK**