

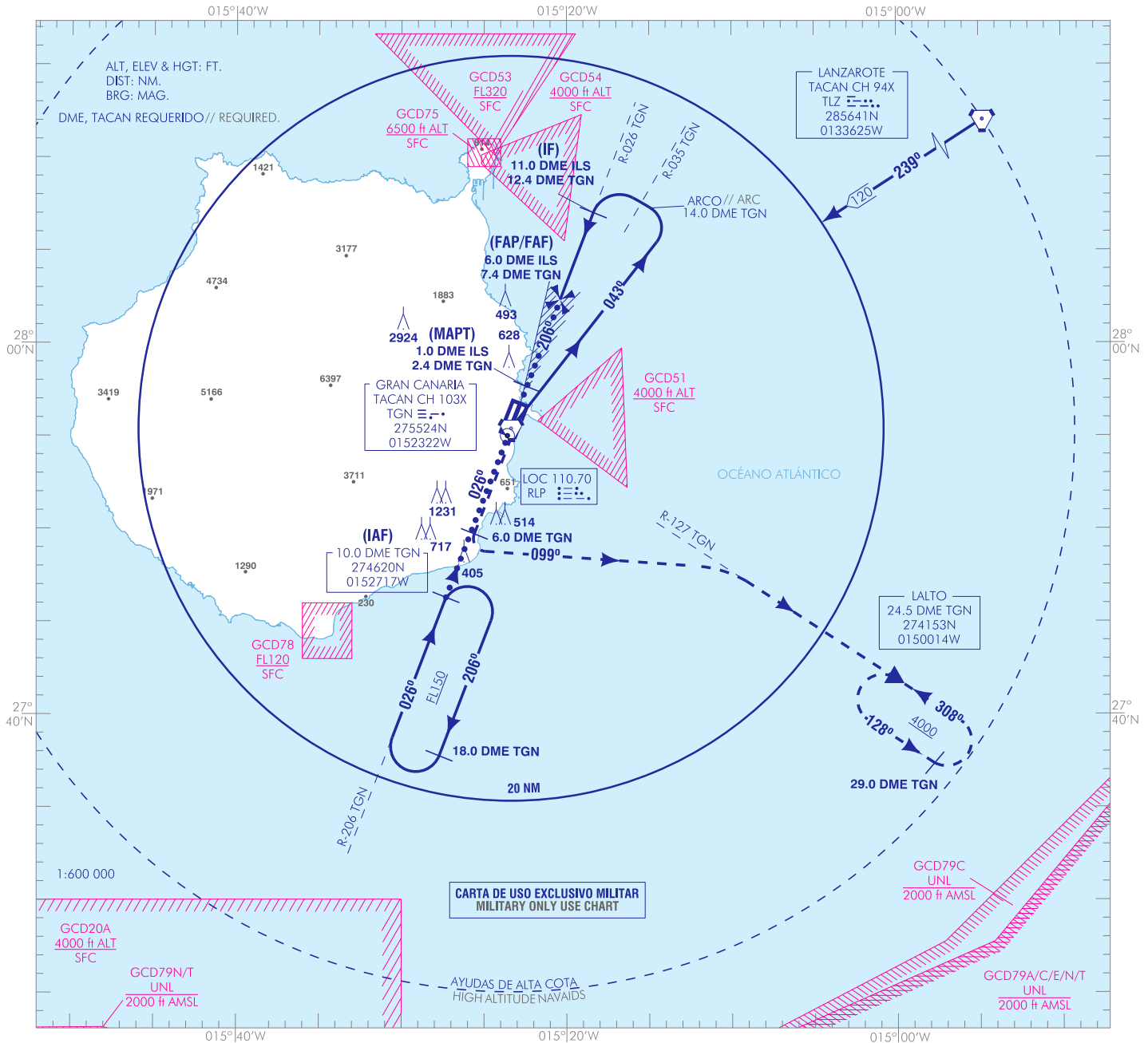
CARTA DE APROXIMACIÓN
POR INSTRUMENTOS-MIPS

ELEV AD
77
VAR 4°W (2020)

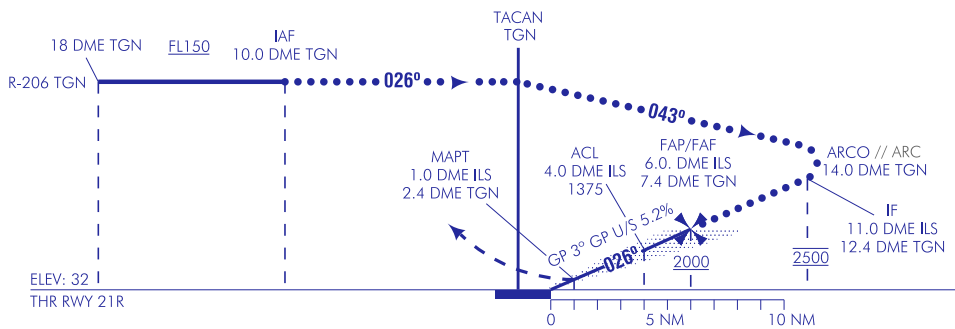
APP 121.300 MHz
363.550 MHz
TWR 118.800 MHz
257.800 MHz

GMC 121.700 MHz
ATIS 118.600 MHz

GRAN CANARIA
HI-TACAN o ILS o LOC Z RWY 21R



FRUSTRADA: SUBIR DIRECTO A 6.0 DME TGN. VIRAR A LA IZQUIERDA A RUMBO MAGNÉTICO 099° PARA INTERCEPTAR R-127 TGN. DIRECTO A LALTO A 4000 PARA INCORPORARSE A LA ESPERA.
MISSED APCH: CLIMB DIRECT TO 6.0 DME TGN. TURN LEFT TO MAGNETIC HEADING 099° TO INTERCEPT R-127 TGN. DIRECT TO LALTO AT 4000 TO JOIN THE HOLDING.



CAMBIOS: RENÚMERICACIÓN, OBSTÁCULOS, FRECUENCIA ATIS.
CHANGES: RENUMBERING, OBSTACLES, ATIS FREQUENCY.

HGT REF ELEV THR RWY 21R

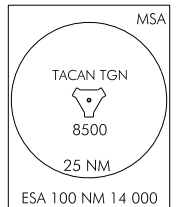
CAT	C	D	HPMA
S-ILS	337-1.2* 305 (300-1.2)	347-1.2 315 (300-1.2)	286-1.2* 254 (300-1.2)
S-LOC	500-1.6* 468 (500-1.6)	500-2.0* 468 (500-2.0)	
S-TACAN	1160-4.4* 1128 (1100-4.4)		
CIRCUITO CIRCLING	1570-4.8 1493 (1500-4.8)	1460-4.8 1383 (1400-4.8)	

* CUANDO ALS U/S INCREMENTAR VIS EN 0.4 km
* WHEN ALS U/S INCREASE VIS IN 0.4 km

GS	kt	80	100	120	140	160	180
FAP-THR:	min:s						
FAF-MAPT: 5.0 NM	min:s	3:45	3:00	2:30	2:09	1:53	1:40
ROD: 5.2%	ft/min	421	527	632	737	843	948

ALT DME (TGN) FNA			ALT DME (ILS) FNA			
7	6	5	5	4	3	2
1880	1560	1250	1610	1350	1030	720

TA 6000



INTENCIONADAMENTE EN BLANCO
INTENTIONALLY BLANK