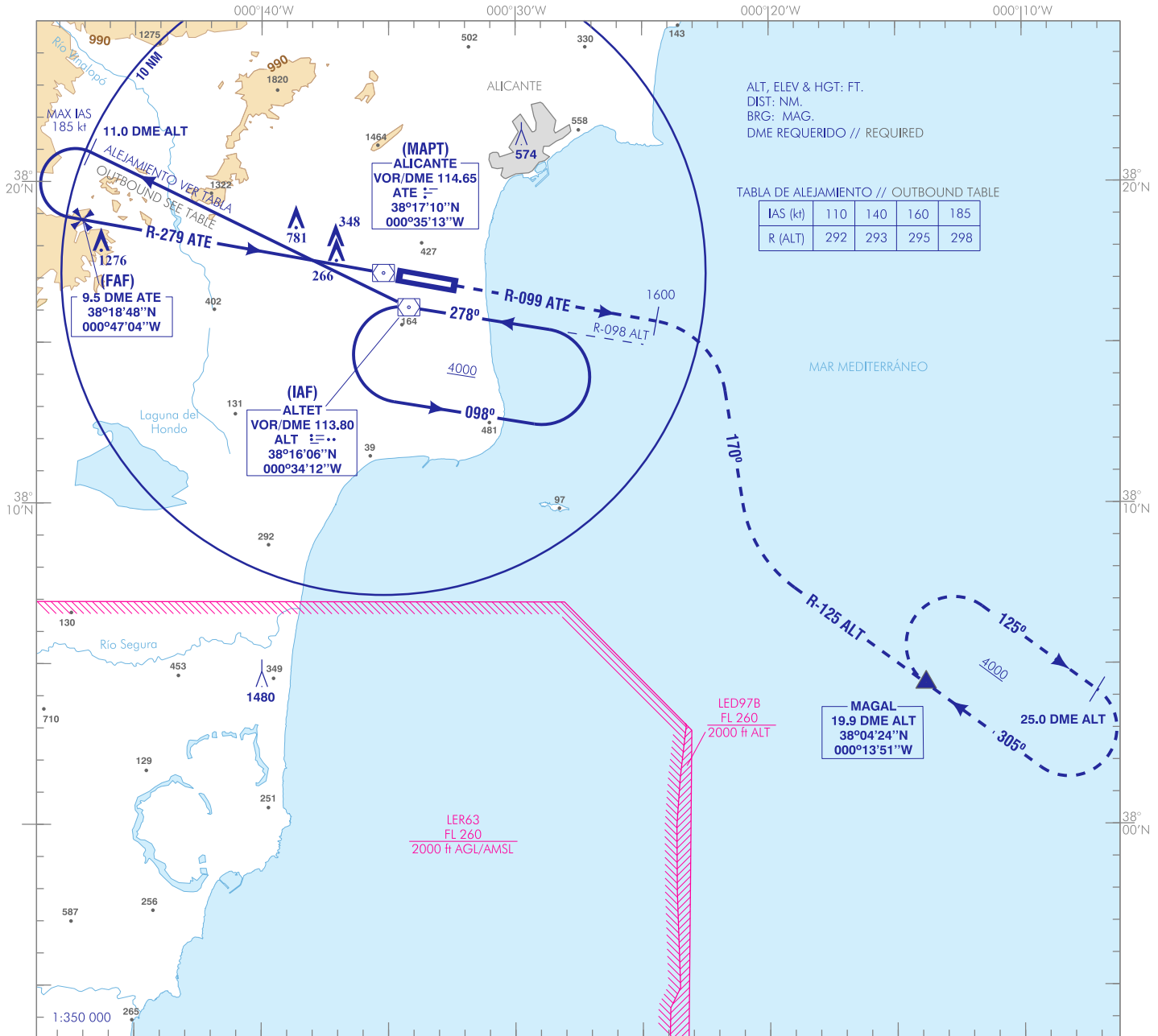


CARTA DE APROXIMACIÓN
POR INSTRUMENTOS-OACI

ELEV AD
142
VAR 1°E (2020)

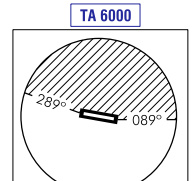
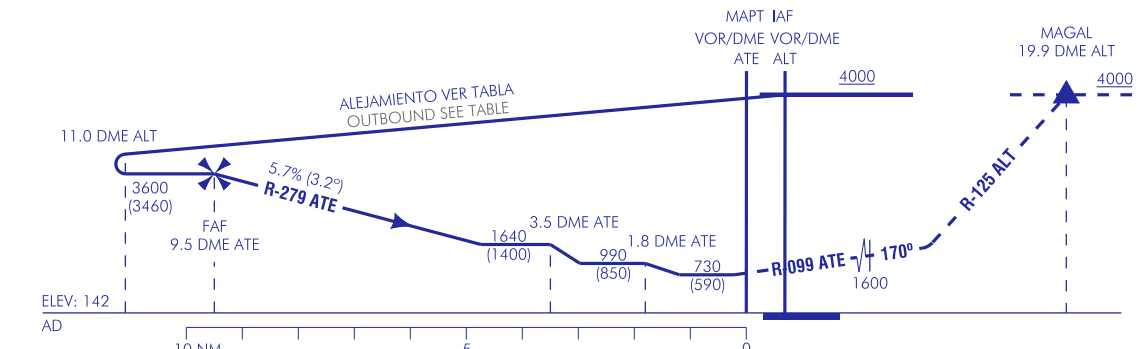
APP 120.400
TWR 118.155
GMC 130.655
ATIS 120.080

ALICANTE/Alicante-Elche
Miguel Hernández
VOR Y
RWY 10

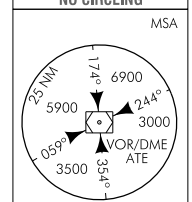


FRUSTRADA: SUBIR EN R-099 ATE HASTA ALCANZAR 1600. VIRAR A LA DERECHA PARA SEGUIR RUMBO MAGNÉTICO 170° PARA SEGUIR R-125 ALT DIRECTO A MAGAL SUBIENDO A 4000 PARA INTEGRARSE A LA ESPERA.

MISSED APCH: CLIMB ON R-099 ATE UP TO REACH 1600. TURN RIGHT TO FOLLOW MAGNETIC HEADING 170° TO FOLLOW R-125 ALT DIRECT TO MAGAL CLIMBING AT 4000 TO JOIN THE HOLDING.



NO EN CIRCUITO
NO CIRCLING



| HGT REF ELEV AD | | A | B | C | D |
|---|------|--------------|---------------|----------------|----------------|
| OCA/H | 2.5% | | 730 (590) | | |
| STA | | | | | |
| En círculo (H) sobre Circling (H) over | | 960 (820) | 1090 (950) | 1240 (1100) | 1370 (1230) |

| GS | kt | 80 | 100 | 120 | 140 | 160 | 180 |
|------------|--------|--|-----|-----|-----|-----|------|
| FAF-THR: | min:s | | | | | | |
| FAF-MAPT: | min:s | NO AUTORIZADO EL CRONOMETRAJE // TIMING NOT AUTHORIZED | | | | | |
| ROD: 5.7 % | ft/min | 459 | 574 | 688 | 803 | 918 | 1033 |

| ALT/HGT DME (ATE) FNA | | | | | | | | | | | | |
|-----------------------|----|----|----|----------------|----------------|----------------|----------------|----------------|----------------|----------------|---------------|--------------|
| 13 | 12 | 11 | 10 | 9 | 8 | 7 | 6 | 5 | 4 | 3 | 2 | 1 |
| | | | | 3490 (3350) | 3150 (3000) | 2800 (2660) | 2460 (2320) | 2110 (1970) | 1770 (1630) | 1420 (1280) | 1080 (940) | 740 (590) |

CAMBIOS: NOMBRE DEL AD.
CHANGES: NAME OF AD.

→ ALICANTE/Alicante-Elche Miguel Hernández AD

REQUISITOS DE LA BASE DE DATOS AERONÁUTICA
 AERONAUTICAL DATABASE REQUIREMENTS

PROCEDIMIENTOS DE APROXIMACIÓN POR INSTRUMENTOS // INSTRUMENT APPROACH PROCEDURES

VOR Y RWY 10

| PUNTO POINT | LATITUD LATITUDE | LONGITUD LONGITUDE | AZIMUT VERDADERO TRUE BEARING | DISTANCIA DME DME DISTANCE (NM) |
|--|---------------------|-----------------------|----------------------------------|---------------------------------------|
| VOR/DME ALT (IAF) | 38°16'05.9"N | 000°34'12.2"W | – | – |
| FAF | 38°18'48.5"N | 000°47'04.2"W | 280.00° (ATE) | 9.48 DME ATE |
| VOR/DME ATE (MAPT) | 38°17'10.4"N | 000°35'12.6"W | – | – |
| Aproximación final de no precisión - Pendiente (Ángulo de descenso) // Non-precision final approach - Slope (Descent angle) | | | | 5.67% (3.24°) |