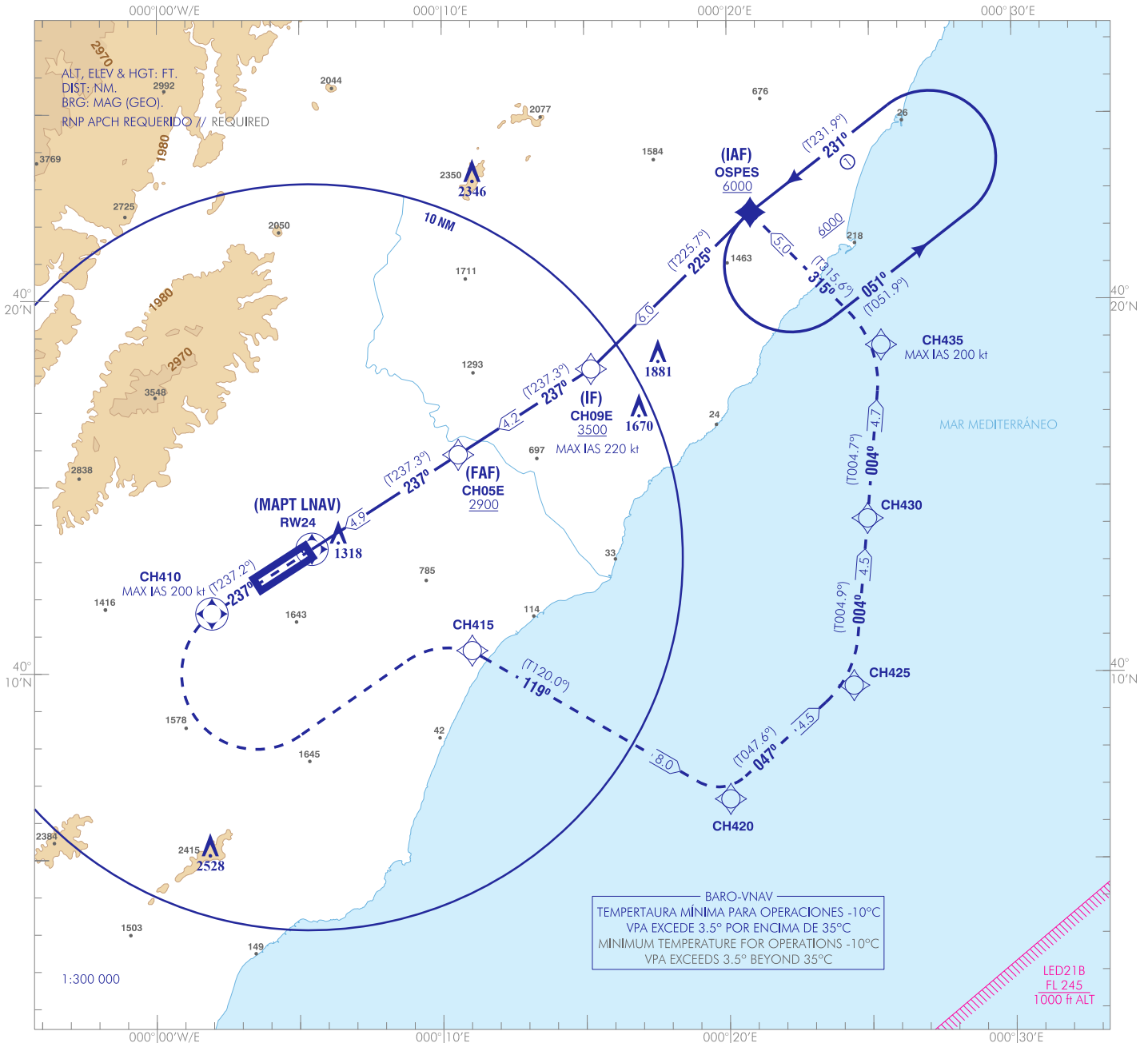


CARTA DE APROXIMACIÓN
POR INSTRUMENTOS-OACI

ELEV AD
1182
VAR 1°E (2020)

APP 120.100
TWR 120.675
121.825

CASTELLÓN
RNP Y
RWY 24



FRUSTRADA: SUBIR EN RUMBO 237° DIRECTO A CH410, VIRAR A LA IZQUIERDA (IAS MAX 200 kt) DIRECTO A CH415. VIRAR A LA DERECHA A CH420. VIRAR A LA IZQUIERDA A CH430. DIRECTO A CH435. VIRAR A LA IZQUIERDA (IAS MAX 200 kt) A OSPES PARA INTEGRARSE A LA ESPERA A 6000 O SUPERIOR.

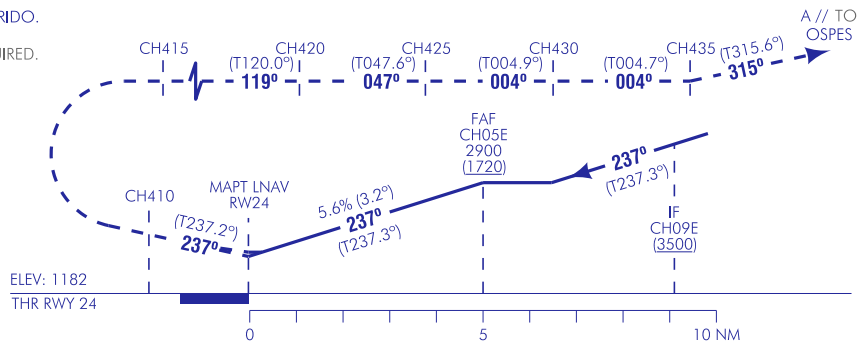
MISSED APCH: CLIMB HEADING 237° DIRECT TO CH410, TURN LEFT (MAX IAS 200 kt) DIRECT TO CH415. TURN RIGHT TO CH420. TURN LEFT TO CH425. TURN LEFT TO CH430. DIRECT TO CH435. TURN LEFT (MAX IAS 200 kt) TO OSPES TO JOIN THE HOLDING AT 6000 OR ABOVE.

NOTAS:

① ESPERA SOBRE OSPES: RNAV 1 REQUERIDO.

NOTES:

① HOLDING OVER OSPES: RNAV 1 REQUIRED.



HGT REF ELEV THR RWY 24

| | | OCA/H | A | B | C | D |
|---|-------------|-------|----------------|----------------|----------------|---|
| STA | LNAV | 2.5% | | 2880 (1700) | | |
| | VNAV | 5.0% | | 1860 (680) | | |
| | LNAV / VNAV | 2.5% | 2420 (1238) | 2440 (1258) | 2450 (1268) | |
| | VNAV | 5.0% | 1590 (408) | 1610 (428) | 1620 (438) | |
| En circuito (H) sobre Circling (H) over | | | | 2880 (1700) | | |

| GS | kt | 80 | 100 | 120 | 140 | 160 | 180 |
|-----------|--------|-----|-----|-----|-----|-----|------|
| FAF-THR: | min:s | | | | | | |
| FAF-MAPT: | min:s | | | | | | |
| ROD: 5.6% | ft/min | 457 | 572 | 686 | 801 | 915 | 1029 |

| ALT/HGT RW24 FNA | | | | | | | |
|------------------|----|----|----|---|---|---|---|
| 13 | 12 | 11 | 10 | 9 | 8 | 7 | 6 |
| | | | | | | | |
| | | | | | | | |

CAMBIOS: RETIRADA LED108.
CHANGES: WITHDRAWAL OF LED108.

CASTELLÓN AD

REQUISITOS DE LA BASE DE DATOS AERONÁUTICA
 AERONAUTICAL DATABASE REQUIREMENTS

➔ RNP Y RWY 24

| COORDENADAS WAYPOINTS // WAYPOINTS COORDINATES | |
|--|----------------------------|
| WPT | COORD |
| OSPES (IAF) | 40°22'21.2"N 000°20'49.0"E |
| CH09E (IF) | 40°18'09.8"N 000°15'12.8"E |
| CH05E (FAF) | 40°15'52.3"N 000°10'33.4"E |
| RW24 (MAPT LNAV) | 40°13'14.5"N 000°05'12.9"E |
| CH410 | 40°11'37.1"N 000°01'55.4"E |
| CH415 | 40°10'37.1"N 000°11'01.7"E |
| CH420 | 40°06'36.9"N 000°20'02.9"E |
| CH425 | 40°09'38.9"N 000°24'22.8"E |
| CH430 | 40°14'07.9"N 000°24'52.8"E |
| CH435 | 40°18'47.2"N 000°25'22.9"E |

| | |
|--|---------------|
| Aproximación final de no precisión (LNAV) - Pendiente (Ángulo de descenso) // Non-precision final approach (LNAV) - Slope (Descent angle) | 5.65% (3.23°) |
| Aproximación final APV Baro (LNAV/VNAV) - Pendiente (Ángulo de descenso) // APV Baro final approach (LNAV/VNAV) - Slope (Descent angle) | 5.65% (3.23°) |

| DESCRIPCIÓN TABULAR DEL PROCEDIMIENTO PROCEDURE TABULAR DESCRIPTION | | | | | | | | | | | |
|--|--|--|------------------------|---------------------------------------|---|----------------------------|---------------------------------------|--------------------------|-------------------------|-------------------|--|
| Número de serie Serial number | Descriptor de trayectoria Path Terminator | Identificador de punto de recorrido Waypoint identifier | Sobrevuelo Fly-over | Curso/Derrota Course/Track °M (°T) | Variación magnética Magnetic variation | Distancia Distance (NM) | Dirección de viraje Turn direction | Altitud Altitude (ft) | Velocidad Speed (kt) | VPA/TCH (°/ft) | Especificación de navegación Navigation specification |
| OSPES (IAF) | | | | | | | | | | | |
| 001 | IF | OSPES | - | - | -0.7 | - | - | +6000 | - | - | RNP APCH |
| 002 | TF | CH09E | - | 225 (225.7) | -0.7 | 6.0 | - | +3500 | -220 | - | RNP APCH |
| 003 | TF | CH05E | - | 237 (237.3) | -0.7 | 4.2 | - | +2900 | - | - | RNP APCH |
| 004 | TF | RW24 | Y | 237 (237.3) | -0.7 | 4.9 | - | +1231 | - | 3.2/49 | RNP APCH |
| 005 | CF | CH410 | Y | 237 (237.2) | -0.7 | - | - | - | -200 | - | RNP APCH |
| 006 | DF | CH415 | - | - | -0.7 | - | L | - | - | - | RNP APCH |
| 007 | TF | CH420 | - | 119 (120.0) | -0.7 | 8.0 | R | - | - | - | RNP APCH |
| 008 | TF | CH425 | - | 047 (047.6) | -0.7 | 4.5 | - | - | - | - | RNP APCH |
| 009 | TF | CH430 | - | 004 (004.9) | -0.7 | 4.5 | - | - | - | - | RNP APCH |
| 010 | TF | CH435 | - | 004 (004.7) | -0.7 | 4.7 | - | - | -200 | - | RNP APCH |
| 011 | TF | OSPES | - | 315 (315.6) | -0.7 | 5.0 | - | +6000 | - | - | RNP APCH |

| CIRCUITOS DE ESPERA // HOLDING PATTERN | | | | | | | | | | |
|--|--|------------------------|---------------------------------------|---|---|---------------------------------------|----------------------------------|----------------------------------|-------------------------|--|
| Descriptor de trayectoria Path terminator | Identificador de punto de recorrido Waypoint identifier | Sobrevuelo Fly-over | Curso/Derrota Course/Track °M (°T) | Variación magnética Magnetic variation | Distancia/ Tiempo de alejamiento Distance/ Outbound time | Dirección de viraje Turn direction | Altitud MNM MNM altitude (ft) | Altitud MAX MAX altitude (ft) | Velocidad Speed (kt) | Especificación de navegación Navigation specification |
| HM | OSPES | - | 231 (231.9) | -0.7 | 1 min | L | +6000 | - | - | RNAV 1 |