

PLANO DE AERÓDROMO-OACI 37°11'19"N  
003°46'38"W ELEV 567

TWR 118.850  
GMC 121.925

**GRANADA**  
Federico García Lorca  
Granada - Jaén

| RWY | DIRECCIÓN<br>DIRECTION | THR                             | RESISTENCIA // STRENGTH  |
|-----|------------------------|---------------------------------|--|
| 09  | 090°                   | 37°11'18.99"N<br>003°47'37.27"W | RWY: PCN 101/F/A/W/T.<br>Primeros // First 170 m PCN 34/R/A/W/T.<br><br>TWY: T1, T2, E3, E4: PCN 101/F/A/W/T.<br>E1, E2, E5, E6: PCN 118/F/A/W/T.<br><br>APN: PCN 81/R/A/W/T.                              |
| 27  | 270°                   | 37°11'19.86"N<br>003°45'39.70"W | PRKG: 1B, 2, 4, 5, 7, 7H, 8: PCN 34/R/A/W/T;<br>1, 10, 10A, 10B, 10H, 11, 11A, 11B, 11H:<br>PCN 61/R/A/W/T;<br>20 a // to 45: PCN 79/R/A/W/T.<br><br>ZONA DE DESHIELO // DE-ICING AREA:<br>PCN 71/R/B/W/T. |

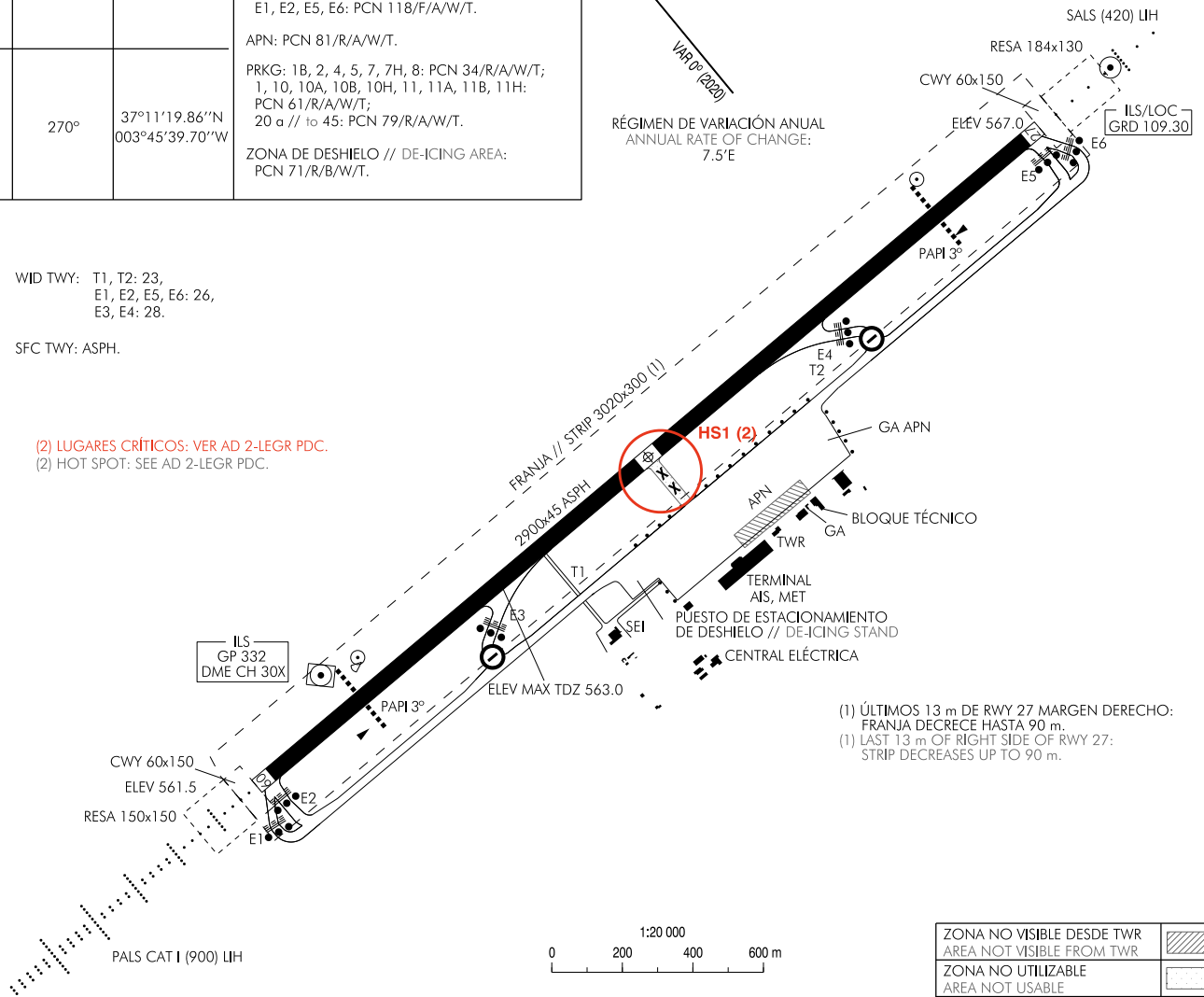
ELEV, DIM: M  
BRG: MAG

RÉGIMEN DE VARIACIÓN ANUAL  
ANNUAL RATE OF CHANGE:  
7.5'E

WID TWY: T1, T2: 23,  
E1, E2, E5, E6: 26,  
E3, E4: 28.

SFC TWY: ASPH.

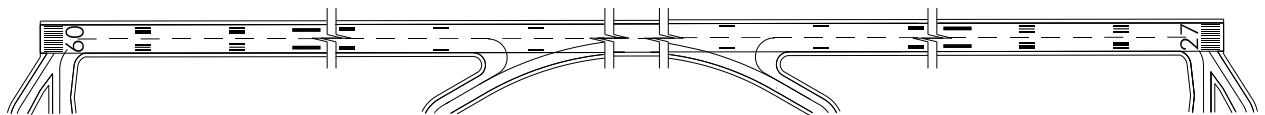
(2) LUGARES CRÍTICOS: VER AD 2-LEGR PDC.  
(2) HOT SPOT: SEE AD 2-LEGR PDC.



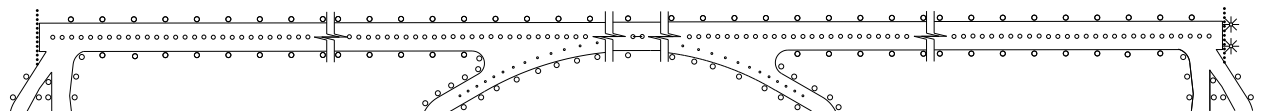
(1) ÚLTIMOS 13 m de RWY 27 MARGEN DERECHO:  
FRANJA DECRECE HASTA 90 m.  
(1) LAST 13 m OF RIGHT SIDE OF RWY 27:  
STRIP DECREASES UP TO 90 m.

CAMBIOS: FREQ GMC, DECLINACIÓN MAGNÉTICA, RÉGIMEN DE VARIACIÓN ANUAL, DIRECCIÓN DE PISTA.  
CHANGES: GMC FREQ, MAGNETIC VARIATION, ANNUAL RATE OF CHANGE, RUNWAY DIRECTION.

SGL RWY & TWY



LGT RWY & TWY



**INTENCIONADAMENTE EN BLANCO**  
**INTENTIONALLY BLANK**