

Ver correcciones manuscritas GEN 0.5  
See hand amendments on section GEN 0.5

VUELO POR INSTRUMENTOS (STAR)-OACI

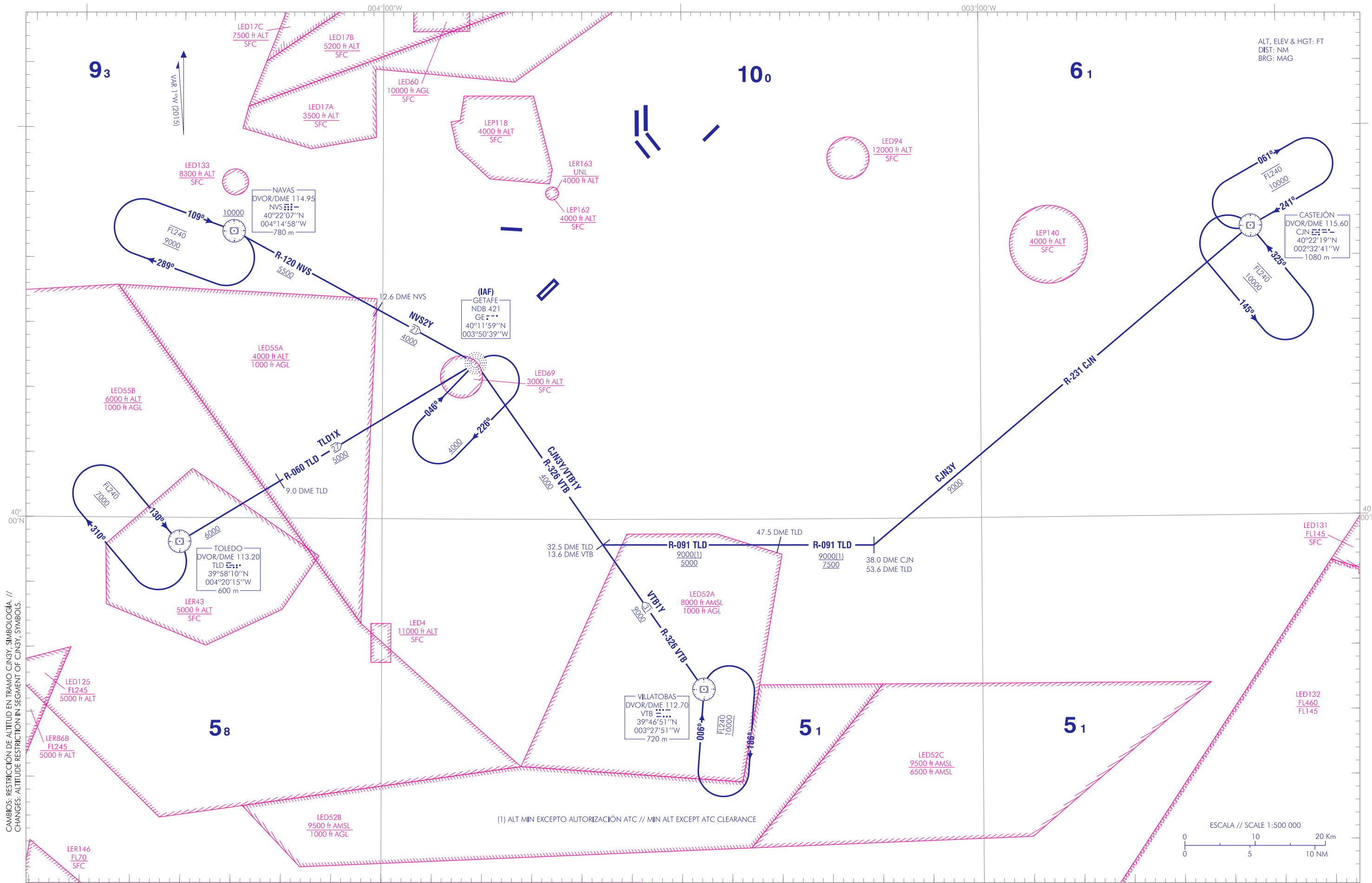
TA 13000

NORTE 118.750  
OESTE 127.100  
ESTE 118.400

APP DESPEGUES OESTE 131.175  
TWR 129.925

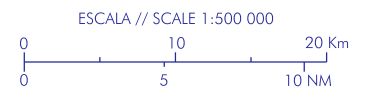
MADRID/Getafe  
RWY 05/23

CJN3Y NVS2Y  
TLD1X VTB1Y



CAMBIO: RESTRICCIÓN DE ALTITUD EN TRAMO CJN3Y, SIMBOLOGÍA. //  
CHANGES: ALTITUDE RESTRICTION IN SEGMENT OF CJN3Y, SYMBOLS.

(1) ALT MIN EXCEPTO AUTORIZACIÓN ATC // MIN ALT EXCEPT ATC CLEARANCE



**INTENCIONADAMENTE EN BLANCO**  
**INTENTIONALLY BLANK**

---

MADRID/Getafe AD

---

LLEGADAS NORMALIZADAS POR INSTRUMENTOS (STAR)

PISTA 05/23

→ LLEGADA CASTEJÓN TRES YANKEE (CJN3Y)  
DVOR/DME CJN, R-231/38.0 DME CJN, R-091/32.5 DME TLD,  
R-326 VTB, NDB GE (IAF).

LLEGADA NAVAS DOS YANKEE (NVS2Y)  
DVOR/DME NVS, NDB GE (IAF).

→ LLEGADA TOLEDO UNO X-RAY (TLD1X)  
DVOR/DME TLD, NDB GE (IAF).

→ LLEGADA VILLATOBAS UNO YANKEE (VTB1Y)  
DVOR/DME VTB, NDB GE (IAF).

STANDARD INSTRUMENT ARRIVALS (STAR)

RUNWAY 05/23

CASTEJÓN THREE YANKEE ARRIVAL (CJN3Y)  
DVOR/DME CJN, R-231/38.0 DME CJN, R-091/32.5 DME TLD,  
R-326 VTB, NDB GE (IAF).

NAVAS TWO YANKEE ARRIVAL (NVS2Y)  
DVOR/DME NVS, NDB GE (IAF).

TOLEDO ONE X-RAY ARRIVAL (TLD1X)  
DVOR/DME TLD, NDB GE (IAF).

VILLATOBAS ONE YANKEE ARRIVAL (VTB1Y)  
DVOR/DME VTB, NDB GE (IAF).

**INTENCIONADAMENTE EN BLANCO**  
**INTENTIONALLY BLANK**