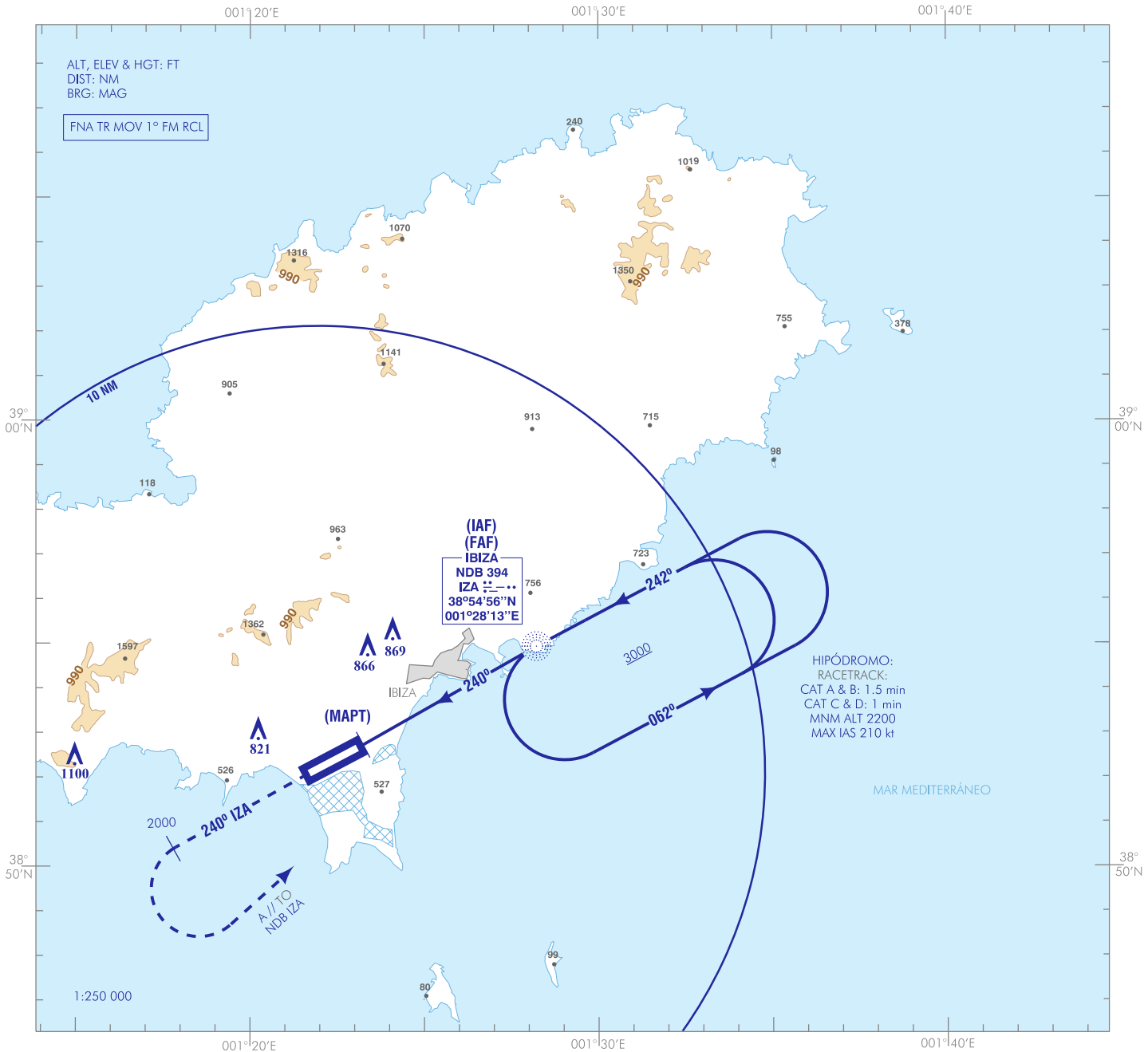


CARTA DE APROXIMACIÓN
POR INSTRUMENTOS-OACI

ELEV AD
24
VAR 0° (2015)

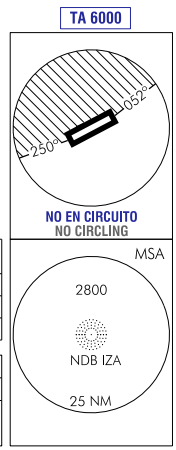
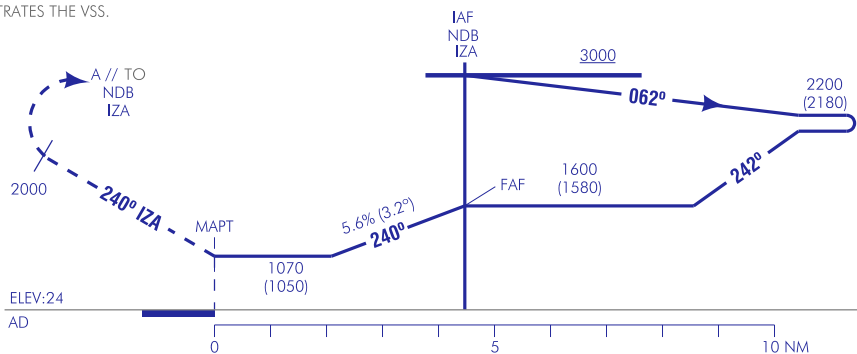
APP 134.825
TWR 118.500
GMC 121.925
ATIS 119.800

IBIZA
NDB
RWY 24



FRUSTRADA: SUBIR EN RUTA MAGNÉTICA 240° IZA HASTA ALCANZAR 2000. VIRAR A LA IZQUIERDA DIRECTO A NDB IZA SUBIENDO A 3000 PARA INTEGRARSE A LA ESPERA.
MISSED APCH: CLIMB ON MAGNETIC TRACK 240° IZA UNTIL REACHING 2000. TURN LEFT DIRECT TO NDB IZA CLIMBING AT 3000 TO JOIN THE HOLDING.

- NOTAS:
- VER OBSTÁCULOS QUE VULNERAN VSS
NOTES:
- SEE OBSTACLES WHICH PENETRATES THE VSS.



HGT REF ELEV AD

| OCA/H | A | B | C | D |
|---|----------------|----------------|----------------|----------------|
| 2.5% | 1070 (1050) | | | |
| STA | | | | |
| En circuito(H) sobre Circling (H) over | 1140 (1120) | 1180 (1160) | 1280 (1260) | 1540 (1520) |

| GS | kt | 80 | 100 | 120 | 140 | 160 | 180 |
|------------------|--------|------|------|------|------|------|------|
| FAF-THR: | mins | | | | | | |
| FAF-MAPT: 4.5 NM | mins | 3:21 | 2:41 | 2:14 | 1:55 | 1:41 | 1:29 |
| ROD: 5.6% | ft/min | 457 | 571 | 685 | 799 | 913 | 1027 |

| ALT/HGT DME () FNA | | | | | | | | | | | | |
|---------------------|----|----|----|---|---|---|---|---|---|---|---|---|
| 13 | 12 | 11 | 10 | 9 | 8 | 7 | 6 | 5 | 4 | 3 | 2 | 1 |
| | | | | | | | | | | | | |

CAMBIOS: IDIOMA, RENUMERACIÓN.
CHANGES: LANGUAGE, RENUMERATION.

IBIZA AD

REQUISITOS DE LA BASE DE DATOS AERONÁUTICA
AERONAUTICAL DATABASE REQUIREMENTS

PROCEDIMIENTOS DE APROXIMACIÓN POR INSTRUMENTOS // INSTRUMENT APPROACH PROCEDURES

NDB RWY 24

| PUNTO POINT | LATITUD LATITUDE | LONGITUD LONGITUDE | AZIMUT VERDADERO TRUE BEARING | DISTANCIA DME DME DISTANCE (NM) |
|--|---------------------|-----------------------|----------------------------------|---------------------------------------|
| NDB IZA (IAF) | 38°54'55.7"N | 001°28'13.5"E | – | – |
| MAPT | 38°52'43.5"N | 001°23'14.6"E | 240.52° (IZA) | – |
| Aproximación final de no precisión - Pendiente (Ángulo de descenso) // Non-precision final approach - Slope (Descent angle) | | | | 5.64% (3.23°) |

OBSTÁCULOS QUE VULNERAN LA VSS // OBSTACLES WHICH PENETRATE THE VSS

| OBSTÁCULOS OBSTACLES | RWY | LATITUD LATITUDE | LONGITUD LONGITUDE | HGT (ft) | ALT (ft) |
|--------------------------------------|-----|---------------------|-----------------------|----------|----------|
| Árbol // Tree | 24 | 38°52'43.4"N | 001°23'29.1"E | 58 | 66 |
| Camino perimetral // Perimetral road | 24 | 38°52'40.7"N | 001°23'19.4"E | 16 | 30 |
| Camino perimetral // Perimetral road | 24 | 38°52'49.4"N | 001°23'16.3"E | 16 | 37 |
| Camino perimetral // Perimetral road | 24 | 38°52'41.1"N | 001°23'20.3"E | 16 | 36 |
| Camino perimetral // Perimetral road | 24 | 38°52'49.8"N | 001°23'17.2"E | 16 | 29 |
| Valla // Fence | 24 | 38°52'40.5"N | 001°23'19.6"E | 9 | 23 |
| Cartel // Board | 24 | 38°52'47.0"N | 001°23'15.2"E | 3 | 23 |
| Poste // Pole | 24 | 38°52'46.3"N | 001°23'16.0"E | 3 | 21 |
| Valla // Fence | 24 | 38°52'50.0"N | 001°23'17.3"E | 10 | 31 |