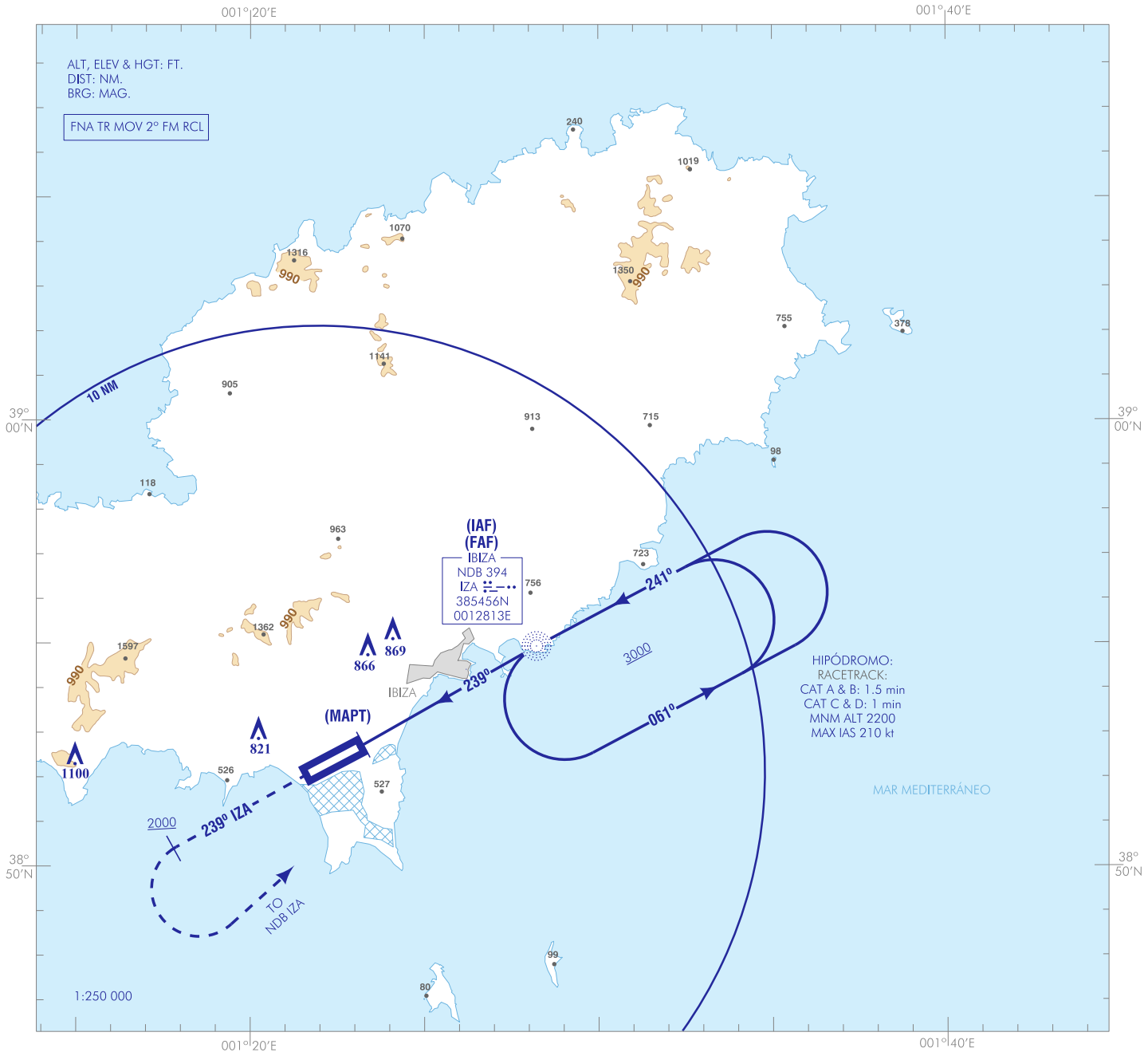


CARTA DE APROXIMACIÓN
POR INSTRUMENTOS-OACI

ELEV AD
23
VAR 1°E (2020)

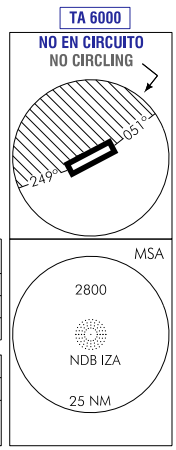
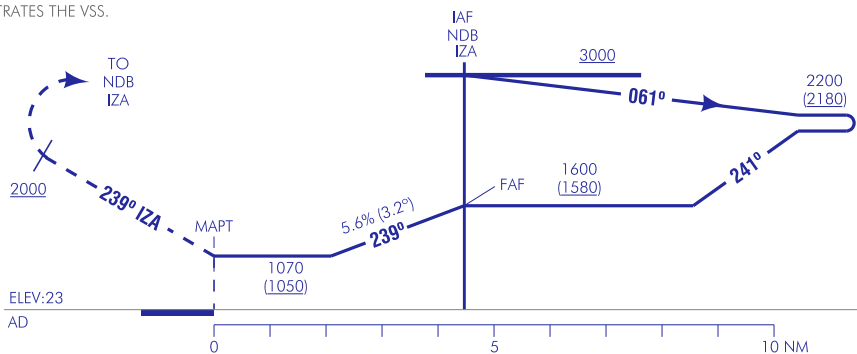
APP 134.825 MHz
TWR 118.505 C
GMC 121.930 C
ATIS 119.805 C

IBIZA
NDB
RWY 24



FRUSTRADA: SUBIR EN RUTA MAGNÉTICA 239° IZA HASTA ALCANZAR 2000. VIRAR A LA IZQUIERDA DIRECTO A NDB IZA SUBIENDO A 3000 PARA INTEGRARSE A LA ESPERA.
MISSED APCH: CLIMB ON MAGNETIC TRACK 239° IZA UNTIL REACHING 2000. TURN LEFT DIRECT TO NDB IZA CLIMBING TO 3000 TO JOIN THE HOLDING.

NOTE:
- VER OBSTÁCULOS QUE VULNERAN VSS.
- SEE OBSTACLES WHICH PENETRATES THE VSS.



HGT REF ELEV AD

| OCA/H | A | B | C | D |
|---------------------------------------|-------------|-------------|-------------|-------------|
| 2.5% | 1070 (1050) | | | |
| STA | | | | |
| En círculo(H) sobre Circling (H) over | 1140 (1120) | 1180 (1160) | 1280 (1260) | 1540 (1520) |

| GS | kt | 80 | 100 | 120 | 140 | 160 | 180 |
|------------------|--------|------|------|------|------|------|------|
| FAF-THR: | min:s | | | | | | |
| FAF-MAPT: 4.5 NM | min:s | 3:21 | 2:41 | 2:14 | 1:55 | 1:41 | 1:29 |
| ROD: 5.6% | ft/min | 457 | 571 | 686 | 800 | 914 | 1028 |

| ALT/HGT DME () FNA | | | | | | | | | |
|---------------------|----|----|----|---|---|---|---|---|---|
| 13 | 12 | 11 | 10 | 9 | 8 | 7 | 6 | 5 | 4 |
| | | | | | | | | | |

CAMBIOS: RENUMERACIÓN.
CHANGES: RENUMBERING.

IBIZA AD

REQUISITOS DE LA BASE DE DATOS AERONÁUTICA
AERONAUTICAL DATABASE REQUIREMENTS

PROCEDIMIENTOS DE APROXIMACIÓN POR INSTRUMENTOS // INSTRUMENT APPROACH PROCEDURES

IAC 13

NDB RWY 24

| PUNTO POINT | LAT | LONG | AZIMUT VERDADERO TRUE BEARING | DISTANCIA DME DME DISTANCE (NM) |
|--|-----------|------------|-------------------------------|---------------------------------|
| NDB IZA (IAF) | 385455.7N | 0012813.5E | - | - |
| MAPT | 385243.5N | 0012314.6E | 240.52° (IZA) | - |
| Aproximación final de no precisión - Pendiente (Ángulo de descenso) // Non-precision final approach - Slope (Descent angle) | | | | 5.64% (3.23°) |