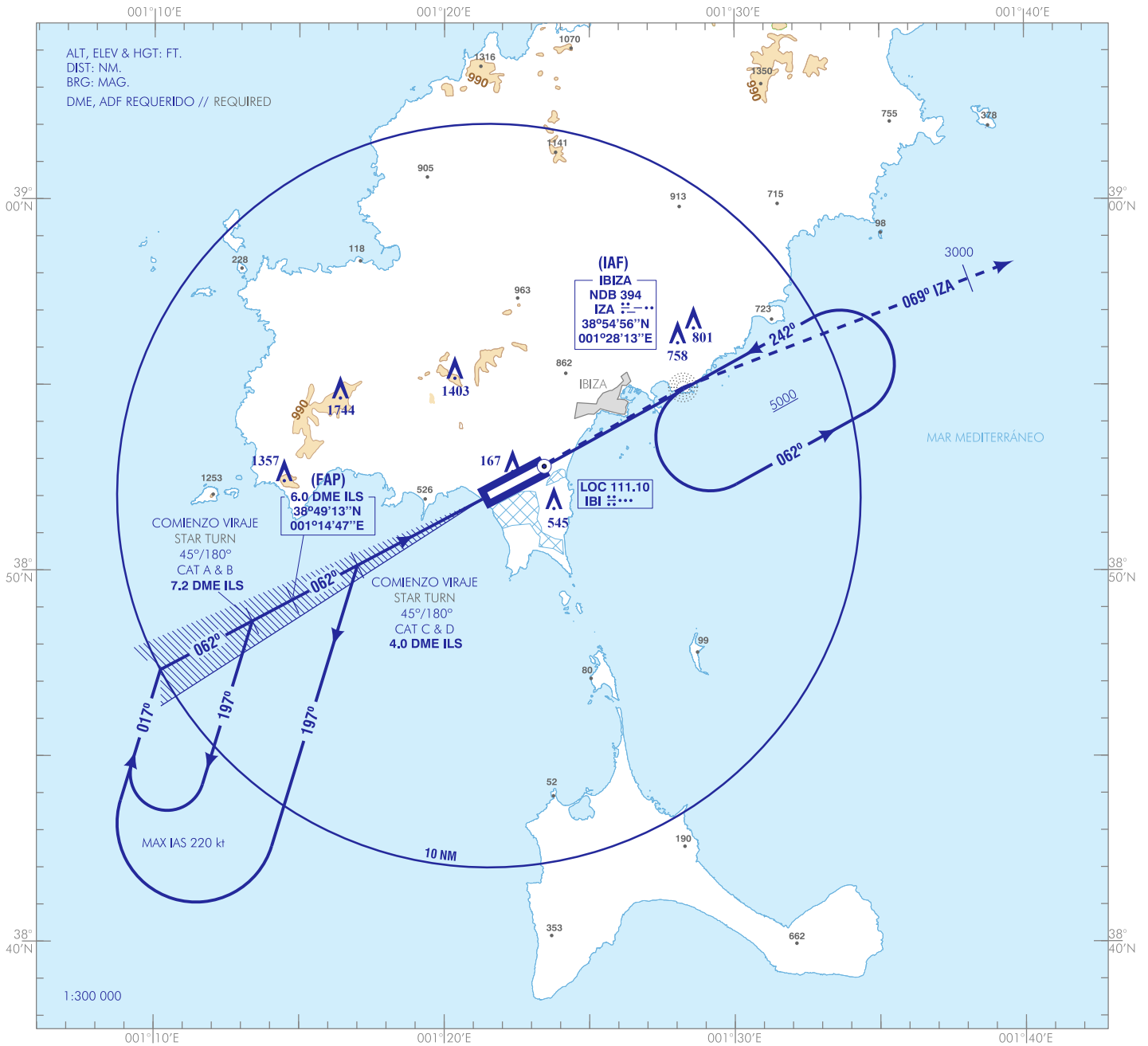


CARTA DE APROXIMACIÓN
POR INSTRUMENTOS-OACI

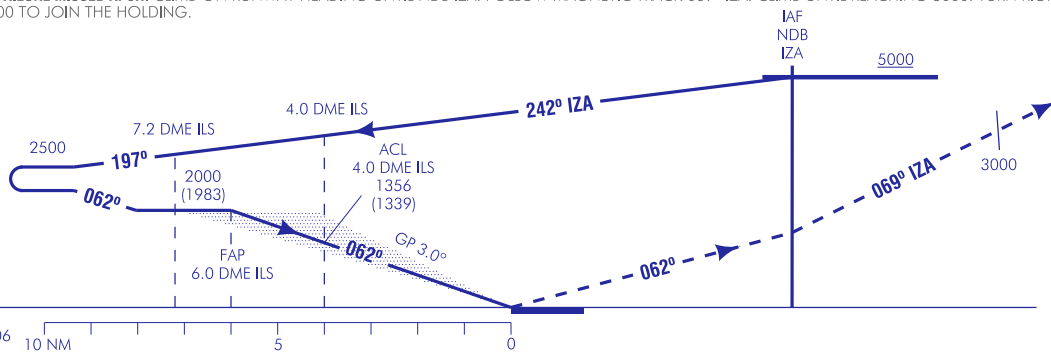
ELEV AD
24
VAR 0° (2015)

APP 134.825
TWR 118.500
GMC 121.925
ATIS 119.800

IBIZA
ILS Y
RWY 06



FRUSTRADA: SUBIR EN RUMBO DE PISTA HASTA NDB IZA. SEGUIR RUTA MAGNÉTICA 069° IZA. ASCENDER HASTA ALCANZAR 3000 Y ESPERAR INSTRUCCIONES ATC.
FRUSTRADA FALLO COMUNICACIONES: SUBIR EN RUMBO DE PISTA HASTA NDB IZA. SEGUIR RUTA MAGNÉTICA 069° IZA. ASCENDER HASTA ALCANZAR 3000. VIRAR A LA DERECHA DIRECTO A NDB IZA, ASCIENDIENDO A 5000 PARA INTEGRARSE A LA ESPERA.
MISSED APCH: CLIMB ON RUNWAY HEADING UNTIL NDB IZA. FOLLOW MAGNETIC TRACK 069° IZA. CLIMB UNTIL REACHING 3000 AND WAIT FOR ATC INSTRUCTIONS.
COMMUNICATION FAILURE MISSED APCH: CLIMB ON RUNWAY HEADING UNTIL NDB IZA. FOLLOW MAGNETIC TRACK 069° IZA. CLIMB UNTIL REACHING 3000. TURN RIGHT DIRECT TO NDB IZA, CLIMBING AT 5000 TO JOIN THE HOLDING.



ELEV: 17

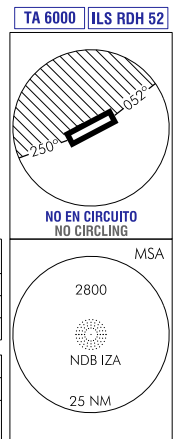
THR RWY 06
NO OFZ RWY 06

HGT REF ELEV THR RWY 06

| OCA/H | | A | B | C | D |
|--|-------|--------------|--------------|--------------|----------------|
| STA | CAT I | 239 (222) | 251 (234) | 259 (242) | 270 (253) |
| | | | | | |
| En círculo(H) sobre Circling (H) over | | 24 | 870 (850) | 970 (950) | 1200 (1180) |

| GS | kt | 80 | 100 | 120 | 140 | 160 | 180 |
|-----------------|--------|------|------|------|------|------|------|
| FAP-THR: 6.0 NM | min:s | 4:29 | 3:35 | 2:59 | 2:33 | 2:14 | 1:59 |
| FAP-MAPT: | ft/min | | | | | | |
| ROD: 5.2 % | ft/min | 425 | 531 | 637 | 743 | 849 | 955 |

| ALT/HGT DME (ILS) FNA | | | | | | | | | | | | | |
|-----------------------|----|----|----|---|---|---|---|---|----------------|----------------|----------------|--------------|--------------|
| 13 | 12 | 11 | 10 | 9 | 8 | 7 | 6 | 5 | 4 | 3 | | | |
| | | | | | | | | | 1690 (1670) | 1360 (1340) | 1040 (1020) | 710 (700) | 390 (380) |



CAMBIOS: IDIOMA:
CHANGES: LANGUAGE:

IBIZA AD

REQUISITOS DE LA BASE DE DATOS AERONÁUTICA
AERONAUTICAL DATABASE REQUIREMENTS

PROCEDIMIENTOS DE APROXIMACIÓN POR INSTRUMENTOS // INSTRUMENT APPROACH PROCEDURES

ILS Y RWY 06

| PUNTO POINT | LATITUD LATITUDE | LONGITUD LONGITUDE | AZIMUT VERDADERO TRUE BEARING | DISTANCIA DME DME DISTANCE (NM) |
|---|---------------------|-----------------------|----------------------------------|---------------------------------------|
| NDB IZA (IAF) | 38°54'55.7"N | 001°28'13.5"E | - | - |
| FAP | 38°49'13.0"N | 001°14'46.9"E | 242.11° (LOC IBI) | 5.97 DME ILS |
| Aproximación final de precisión - Pendiente (Ángulo de descenso) // Precision final approach - Slope (Descent angle) | | | | 5.24% (3.00°) |