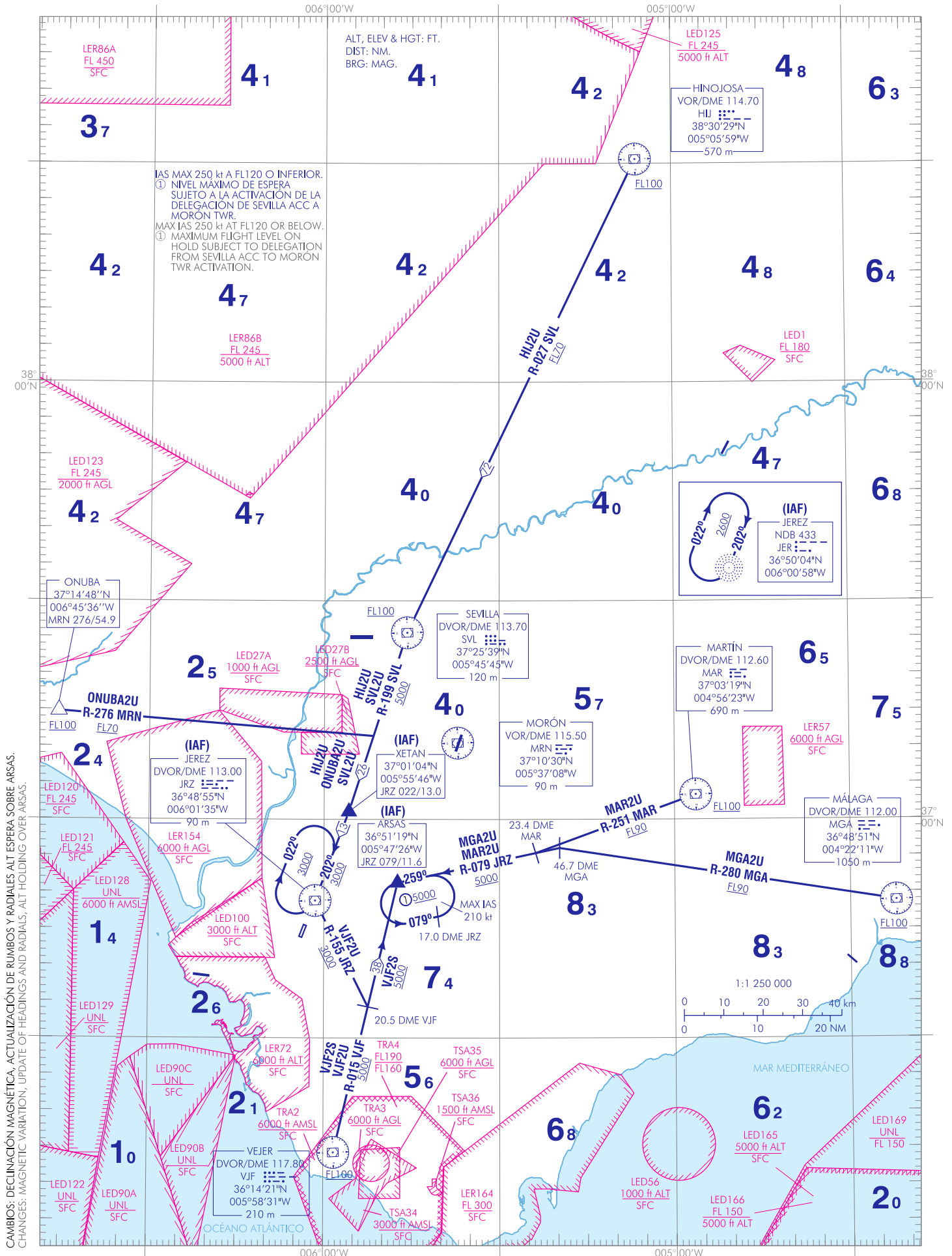


CARTA DE LLEGADA NORMALIZADA
VUELO POR INSTRUMENTOS (STAR)-OACI VAR 1°W (2020)

TA 6000 APP 128.500
TWR 118.550

HIJ2U MGA2U MAR2U ONUBA2U
SVL2U VJF2S VJF2U



CAMBIOS: DECLINACIÓN MAGNÉTICA, ACTUALIZACIÓN DE RUMBOS Y RADIALES ALT ESPERA SOBRE ARSAS.
CHANGES: MAGNETIC VARIATION, UPDATE OF HEADINGS AND RADIALS, ALT HOLDING OVER ARSAS.

JEREZ AD

LLEGADAS NORMALIZADAS POR INSTRUMENTOS (STAR)

STANDARD INSTRUMENTS ARRIVALS (STAR)

PISTA 20

RUNWAY 20

NOTAS APLICABLES A TODAS LAS STAR:

- IAS MAX 250 kt a o por debajo de FL120.

NOTES APPLICABLE TO ALL STAR:

- MAX IAS 250 kt at or below FL120.

LLEGADA HINOJOSA DOS UNIFORM (HIJ2U)
VOR/DME HIJ, DVOR/DME SVL, XETAN (IAF), DVOR/DME JRZ (IAF).

HINOJOSA TWO UNIFORM ARRIVAL (HIJ2U)
VOR/DME HIJ, DVOR/DME SVL, XETAN (IAF), DVOR/DME JRZ (IAF).

→ LLEGADA MÁLAGA DOS UNIFORM (MGA2U)
DVOR/DME MGA, R-280 MGA/46.7 DME MGA, ARSAS (IAF).

MÁLAGA TWO UNIFORM ARRIVAL (MGA2U)
DVOR/DME MGA, R-280 MGA/46.7 DME MGA, ARSAS (IAF).

→ LLEGADA MARTIN DOS UNIFORM (MAR2U)
DVOR/DME MAR, R-251 MAR/23.4 DME MAR, ARSAS (IAF).

MARTIN TWO UNIFORM ARRIVAL (MAR2U)
DVOR/DME MAR, R-251 MAR/23.4 DME MAR, ARSAS (IAF).

→ LLEGADA ONUBA DOS UNIFORM (ONUBA2U)
ONUBA, R-276 MRN/R-199 SVL, XETAN (IAF), DVOR/DME JRZ (IAF).

ONUBA TWO UNIFORM ARRIVAL (ONUBA2U)
ONUBA, R-276 MRN/R-199 SVL, XETAN (IAF), DVOR/DME JRZ (IAF).

LLEGADA SEVILLA DOS UNIFORM (SVL2U)
DVOR/DME SVL, XETAN (IAF), DVOR/DME JRZ (IAF).

SEVILLA TWO UNIFORM ARRIVAL (SVL2U)
DVOR/DME SVL, XETAN (IAF), DVOR/DME JRZ (IAF).

LLEGADA VEJER DOS SIERRA (VJF2S)
DVOR/DME VJF, ARSAS (IAF).

VEJER TWO SIERRA ARRIVAL (VJF2S)
DVOR/DME VJF, ARSAS (IAF).

LLEGADA VEJER DOS UNIFORM (VJF2U)
DVOR/DME VJF, R-015 VJF/20.5 DME VJF, DVOR/DME JRZ (IAF).

VEJER TWO UNIFORM ARRIVAL (VJF2U)
DVOR/DME VJF, R-015 VJF/20.5 DME VJF, DVOR/DME JRZ (IAF).