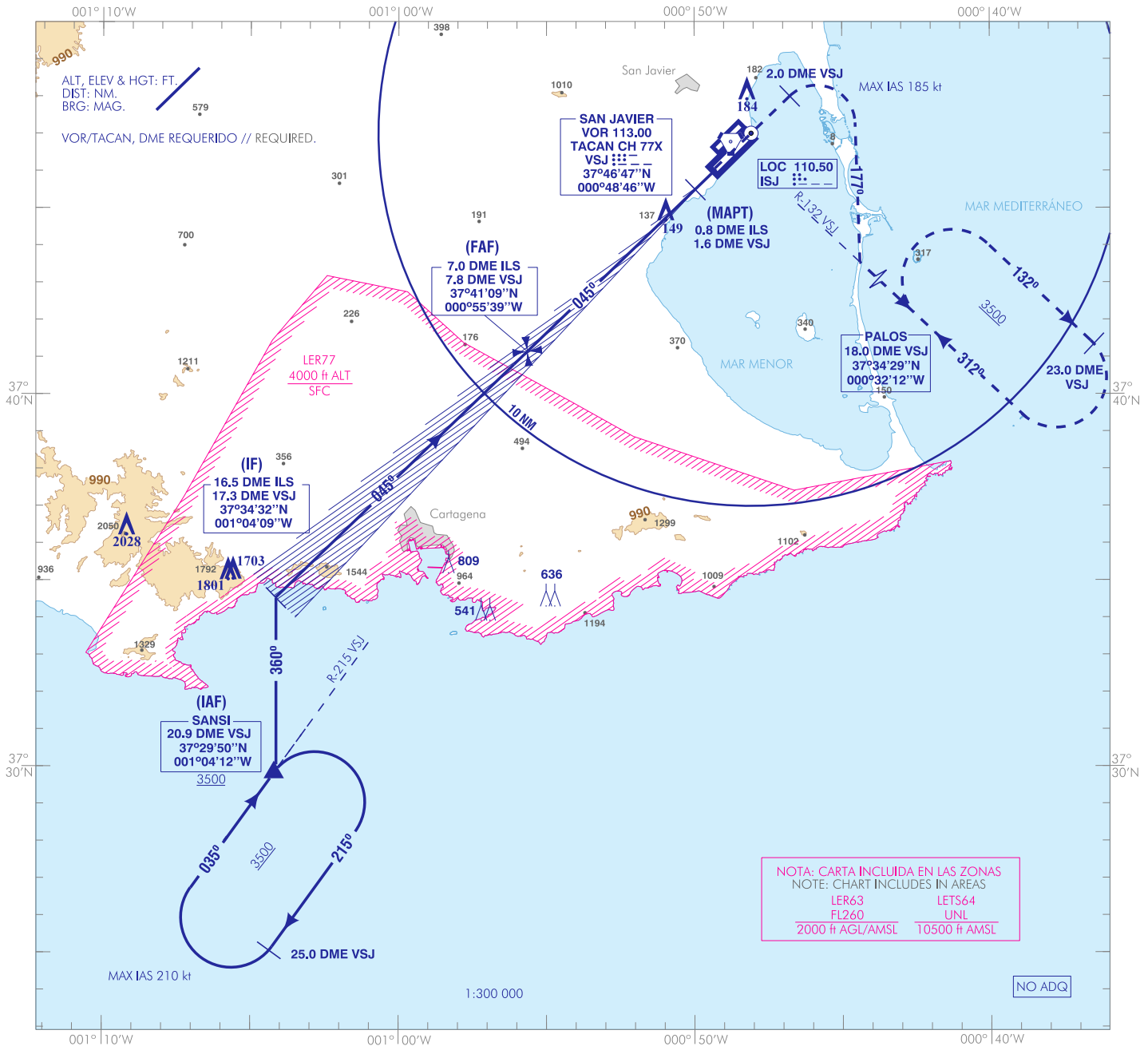


CARTA DE APROXIMACIÓN
POR INSTRUMENTOS-MIPS

ELEV AD
29
VAR 1°E (2020)

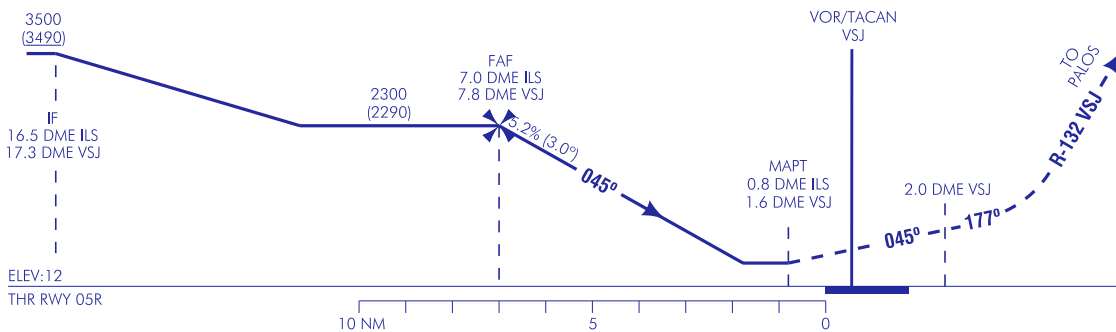
APP 130.300
398.325
TWR 124.425
257.800
GMC 121.600

MURCIA/San Javier
LOC Z
RWY 05R



FRUSTRADA: SUBIR EN RUMBO DE PISTA HASTA 2.0 DME VSJ. VIRAR A LA DERECHA (IAS MAX 185 kt) PARA SEGUIR RUMBO MAGNÉTICO 177°, INTERCEPTAR Y SEGUIR R-132 VSJ DIRECTO A PALOS PARA INTEGRARSE A LA ESPERA A 3500.

MISSED APCH: CLIMB ON RUNWAY HEADING TO 2.0 DME VSJ. TURN RIGHT (MAX IAS 185 kt) TO FOLLOW MAGNETIC HEADING 177° TO INTERCEPT AND FOLLOW R-132 VSJ DIRECT TO PALOS AT 3500 AND HOLD.

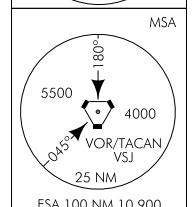
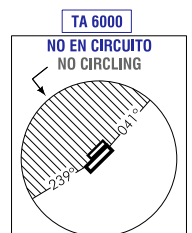


HGT REF ELEV THR RWY 05R

| CAT | A | B | C | D |
|----------------------|----------------------------|--------------------------|-----------------------------|-----------------------------|
| S-LOC | 400 - 1.5 390 (400-1.5) | | 400 - 1.8 390 (400-1.8) | |
| CIRCUITO CIRCLING | 510-1.5 490 (500-1.5) | 530-1.6 510 (600-1.6) | 1020-2.4 1000 (1000-2.4) | 1370-5.0 1350 (1400-5.0) |

| GS | kt | 80 | 100 | 120 | 140 | 160 | 180 |
|------------------|--------|------|------|------|------|------|------|
| FAF-THR: | min:s | | | | | | |
| FAF-MAPT: 6.2 NM | min:s | 4:39 | 3:43 | 3:06 | 2:29 | 2:29 | 2:03 |
| ROD: 5.2 % | ft/min | 424 | 530 | 636 | 743 | 849 | 955 |

| ALT/HGT DME (ILS) FNA | | | | | | | |
|-----------------------|----|----|----|---|---|---|------|
| 13 | 12 | 11 | 10 | 9 | 8 | 7 | 6 |
| | | | | | | | 1980 |
| | | | | | | | 1660 |
| | | | | | | | 1340 |
| | | | | | | | 1020 |
| | | | | | | | 700 |



CAMBIOS: RESTRICCIÓN DE ALTITUD EN IF.
CHANGES: IF ALTITUDE RESTRICTION.

MURCIA / San Javier AD

REQUISITOS DE LA BASE DE DATOS AERONÁUTICA
 AERONAUTICAL DATABASE REQUIREMENTS

➔ PROCEDIMIENTOS DE APROXIMACIÓN POR INSTRUMENTOS // INSTRUMENT APPROACH PROCEDURES

LOC Z RWY 05R

| PUNTO POINT | LAT | LONG | AZIMUT VERDADERO TRUE BEARING | DISTANCIA DME DME DISTANCE (NM) |
|--|--------------|---------------|----------------------------------|---------------------------------------|
| SANSI (IAF) | 37°29'50.5"N | 001°04'12.2"W | 216.00° (VSJ) | 20.90 DME VSJ |
| IF | 37°34'31.6"N | 001°04'08.7"W | 225.75° (LOC ISJ) | 16.50 DME ILS 17.30 DME VSJ |
| FAF | 37°41'09.0"N | 000°55'38.6"W | 225.75° (LOC ISJ) | 7.00 DME ILS 7.80 DME VSJ |
| MAPT | 37°45'31.0"N | 000°49'59.9"W | 225.75° (LOC ISJ) | 0.77 DME ILS 1.60 DME VSJ |
| Aproximación final de no precisión - Pendiente (Ángulo de descenso) // Non-precision final approach - Slope (Descent angle) | | | | 5.24% (3.00°) |