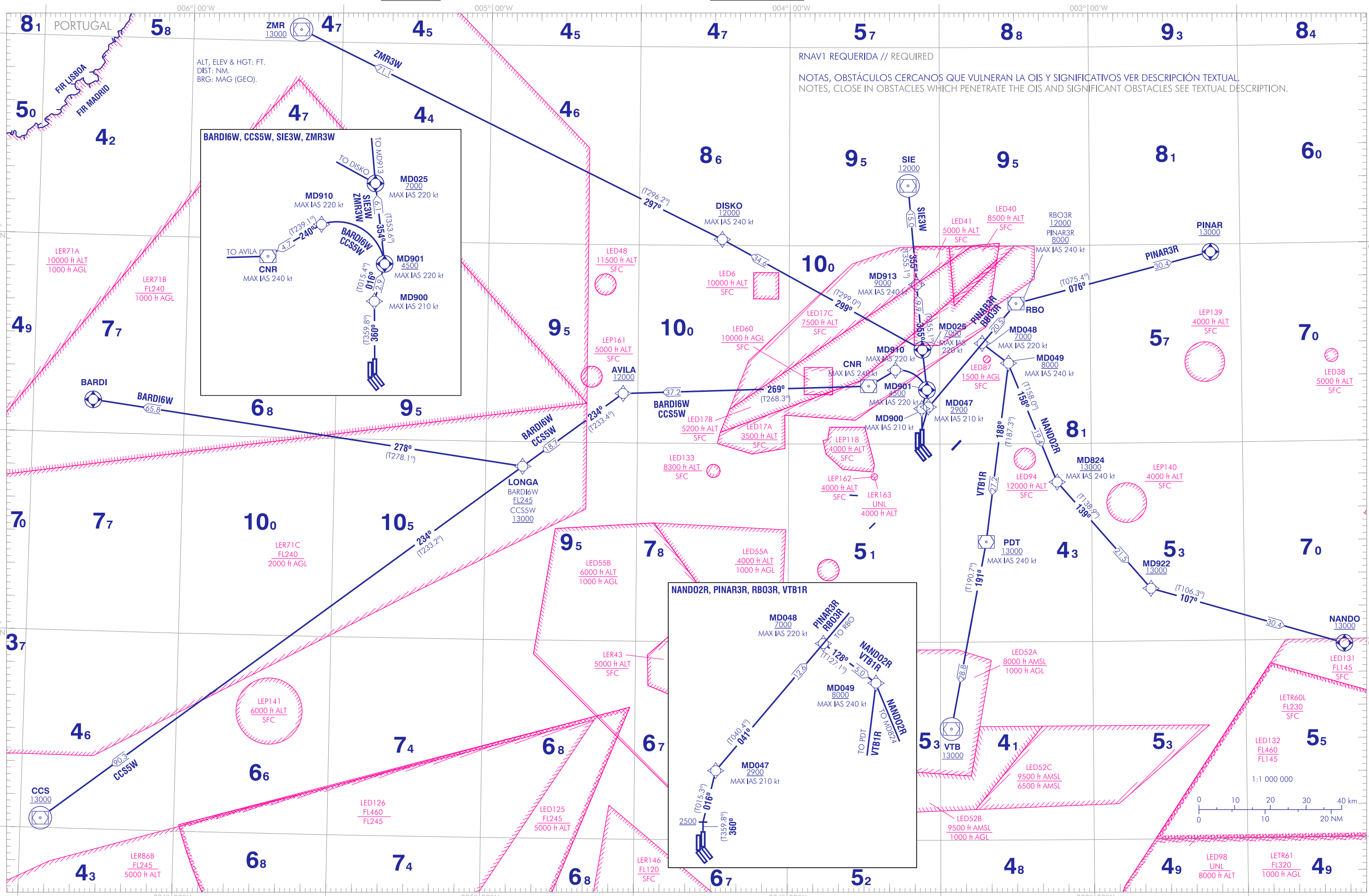


CARTA DE SALIDA NORMALIZADA  
VUELO POR INSTRUMENTOS (SID) RNAV1-OACI

TA 13000

VAR 0° (2020)

DEP E 131.175  
TWR 118.680



**INTENCIONADAMENTE EN BLANCO**  
**INTENTIONALLY BLANK**

| COORDENADAS WAYPOINTS // WAYPOINTS COORDINATES |                            |
|--|----------------------------|
| WPT  | COORD                      |
| AVILA  | 40°37'28.6"N 004°32'59.6"W |
| BARDI  | 40°35'00.6"N 006°18'08.8"W |
| CCS  | 39°31'27.7"N 006°26'04.8"W |
| CNR  | 40°38'45.8"N 003°44'08.5"W |
| DISKO  | 41°00'54.9"N 004°13'23.7"W |
| LONGA  | 40°26'18.1"N 004°52'37.6"W |
| MD025  | 40°44'16.5"N 003°33'27.4"W |
| MD047  | 40°35'37.1"N 003°32'17.6"W |
| MD048  | 40°45'13.2"N 003°21'33.3"W |
| MD049  | 40°42'12.4"N 003°16'19.9"W |
| MD824  | 40°24'10.7"N 003°06'49.4"W |
| MD900  | 40°35'21.6"N 003°33'34.9"W |
| MD901  | 40°38'11.1"N 003°32'33.5"W |
| MD910  | 40°41'11.2"N 003°38'49.4"W |
| MD913  | 40°54'08.6"N 003°34'34.5"W |
| MD922  | 40°07'58.5"N 002°48'25.3"W |
| NANDO  | 39°59'19.9"N 002°10'28.4"W |
| PDT  | 40°15'10.4"N 003°20'52.3"W |
| PINAR  | 40°58'49.1"N 002°35'57.0"W |
| RBO  | 40°51'14.3"N 003°14'47.4"W |
| SIE  | 41°09'06.0"N 003°36'17.4"W |
| VTB  | 39°46'50.6"N 003°27'51.1"W |
| ZMR  | 41°31'48.2"N 005°38'23.1"W |

**SALIDAS NORMALIZADAS POR INSTRUMENTOS (SID) RNAV1**

**PISTA 36R DIURNO**

**NOTAS APLICABLES A TODAS LAS SID:**

- RNAV1 requerido.
- CONTROL DE VELOCIDAD  
IAS MAX 250 kt hasta alcanzar 10000 ft.
- AUTORIZACIÓN INICIAL ATC: Mantener 13000 ft y solicitar cambio de nivel en ruta.
- Por motivos medioambientales, es necesario ajustarse de forma estricta a lo indicado en la definición de los procedimientos de salida (ver AD 2-LEMD casilla 21).

**STANDARD INSTRUMENT DEPARTURES (SID) RNAV1**

**RUNWAY 36R DAY TIME**

**NOTES APPLICABLE TO ALL SID:**

- RNAV1 required.
- SPEED CONTROL:  
MAX IAS 250 kt up to reach 10000 ft.
- INITIAL ATC CLEARANCE: maintain 13000 ft and request flight level change enroute.
- Due to enviromental reasons, it is mandatory to strictly adhere to what is stated in the definition of departure procedures (see AD 2-LEMD item 21).

| DESCRIPCIÓN TABULAR DEL PROCEDIMIENTO<br>PROCEDURE TABULAR DESCRIPTION  |  |  |                        |   |   |                               |                                       |                             |                            |                  |  |
|---|--|--|------------------------|---|---|-------------------------------|---------------------------------------|-----------------------------|----------------------------|------------------|--|
| Número de serie<br>Serial number  | Descriptor de trayectoria<br>Path Terminator | Identificador de punto de recorrido<br>Waypoint identifier | Sobrevuelo<br>Fly-over | Curso/<br>Derrota<br>Course/Track<br>°M(°T) | Variación magnética<br>Magnetic variation | Distancia<br>Distance<br>(NM) | Dirección de viraje<br>Turn direction | Altitud<br>Altitude<br>(ft) | Velocidad<br>Speed<br>(kt) | VPA/TCH<br>(°ft) | Especificación de navegación<br>Navigation specification |
| <b>BARDI6W RNAV1:</b> Sujeta a la actividad de la LED60. // Subject to LED60 activity.<br>Pendiente mínima de ascenso: 7.0% hasta AVILA, debida a motivos operacionales. // Minimum climb gradient of 7.0% up to AVILA, due to operational reasons.<br>NOTA: Si no es posible cumplir con la restricción de perfil en LONGA, notifíquese al ATC lo antes posible. // NOTE: If compliance with the LONGA profile restrictions is not possible, notify ATC as soon as possible. |  |  |                        |   |   |                               |                                       |                             |                            |                  |  |
| 001   | CF   | MD900  | –                      | 360 (359.8)                                 | +0.4                                      | –                             | –                                     | –                           | -210                       | –                | RNAV1  |
| 002   | TF   | MD901  | Y                      | 016 (015.4)                                 | +0.4                                      | 2.9                           | –                                     | +4500                       | -220                       | –                | RNAV1  |
| 003   | DF   | MD910  | –                      | –   | +0.4                                      | –                             | –                                     | –                           | -220                       | –                | RNAV1  |
| 004   | TF   | CNR  | –                      | 240 (239.1)                                 | +0.4                                      | 4.7                           | –                                     | –                           | -240                       | –                | RNAV1  |
| 005   | TF   | AVILA  | –                      | 269 (268.3)                                 | +0.4                                      | 37.2                          | –                                     | +12000                      | –                          | –                | RNAV1  |
| 006   | TF   | LONGA  | –                      | 234 (233.4)                                 | +0.4                                      | 18.7                          | –                                     | +FL245                      | –                          | –                | RNAV1  |
| 007   | TF   | BARDI  | Y                      | 278 (278.1)                                 | +0.4                                      | 65.8                          | –                                     | –                           | –                          | –                | RNAV1  |
| <b>CCS5W RNAV1:</b> Sujeta a la actividad de la LED60. // Subject to LED60 activity.<br>Pendiente mínima de ascenso: 7.0% hasta CNR, debida a motivos operacionales. // Minimum climb gradient of 7.0% up to CNR, due to operational reasons.   |  |  |                        |   |   |                               |                                       |                             |                            |                  |  |
| 001   | CF   | MD900  | –                      | 360 (359.8)                                 | +0.4                                      | –                             | –                                     | –                           | -210                       | –                | RNAV1  |
| 002   | TF   | MD901  | Y                      | 016 (015.4)                                 | +0.4                                      | 2.9                           | –                                     | +4500                       | -220                       | –                | RNAV1  |
| 003   | DF   | MD910  | –                      | –   | +0.4                                      | –                             | –                                     | –                           | -220                       | –                | RNAV1  |
| 004   | TF   | CNR  | –                      | 240 (239.1)                                 | +0.4                                      | 4.7                           | –                                     | –                           | -240                       | –                | RNAV1  |
| 005   | TF   | AVILA  | –                      | 269 (268.3)                                 | +0.4                                      | 37.2                          | –                                     | +12000                      | –                          | –                | RNAV1  |
| 006   | TF   | LONGA  | –                      | 234 (233.4)                                 | +0.4                                      | 18.7                          | –                                     | +13000                      | –                          | –                | RNAV1  |
| 007   | TF   | CCS  | Y                      | 234 (233.2)                                 | +0.4                                      | 90.3                          | –                                     | +13000                      | –                          | –                | RNAV1  |
| <b>NANDO2R RNAV1:</b> Sujeta a la actividad de la LED131. // Subject to LED131 activity.<br>Pendiente mínima de ascenso: 5.5% hasta MD824, debida a motivos operacionales. // Minimum climb gradient of 5.5% up to MD824, due to operational reasons.<br>No se permiten cambios en la derrota inicial de salida antes del DER. // Changes to the initial departure track are not permitted before DER.  |  |  |                        |   |   |                               |                                       |                             |                            |                  |  |
| 001   | CA   | –  | –                      | 360 (359.8)                                 | +0.4                                      | –                             | –                                     | +2500                       | –                          | –                | RNAV1  |
| 002   | CF   | MD047  | –                      | 016 (015.3)                                 | +0.4                                      | –                             | –                                     | +2900                       | -210                       | –                | RNAV1  |
| 003   | TF   | MD048  | –                      | 041 (040.4)                                 | +0.4                                      | 12.6                          | –                                     | +7000                       | -220                       | –                | RNAV1  |
| 004   | TF   | MD049  | –                      | 128 (127.1)                                 | +0.4                                      | 5.0                           | –                                     | +8000                       | -240                       | –                | RNAV1  |
| 005   | TF   | MD824  | –                      | 158 (158.0)                                 | +0.4                                      | 19.4                          | –                                     | +13000                      | -240                       | –                | RNAV1  |
| 006   | TF   | MD922  | –                      | 139 (138.9)                                 | +0.4                                      | 21.5                          | –                                     | +13000                      | –                          | –                | RNAV1  |
| 007   | TF   | NANDO  | Y                      | 107 (106.3)                                 | +0.4                                      | 30.4                          | –                                     | +13000                      | –                          | –                | RNAV1  |
| <b>PINAR3R RNAV1:</b> Pendiente mínima de ascenso: 5.0% hasta RBO, debida a motivos operacionales. // Minimum climb gradient of 5.0% up to RBO, due to operational reasons.<br>No se permiten cambios en la derrota inicial de salida antes del DER. // Changes to the initial departure track are not permitted before DER.  |  |  |                        |   |   |                               |                                       |                             |                            |                  |  |
| 001   | CA   | –  | –                      | 360 (359.8)                                 | +0.4                                      | –                             | –                                     | +2500                       | –                          | –                | RNAV1  |
| 002   | CF   | MD047  | –                      | 016 (015.3)                                 | +0.4                                      | –                             | –                                     | +2900                       | -210                       | –                | RNAV1  |
| 003   | TF   | RBO  | –                      | 041 (040.4)                                 | +0.4                                      | 20.5                          | –                                     | +8000                       | -240                       | –                | RNAV1  |
| 004   | TF   | PINAR  | Y                      | 076 (075.4)                                 | +0.4                                      | 30.4                          | –                                     | +13000                      | –                          | –                | RNAV1  |
| <b>RBO3R RNAV1:</b> Pendiente mínima de ascenso: 6.9% hasta RBO, debida a motivos operacionales. // Minimum climb gradient of 6.9% up to RBO, due to operational reasons.<br>No se permiten cambios en la derrota inicial de salida antes del DER. // Changes to the initial departure track are not permitted before DER.  |  |  |                        |   |   |                               |                                       |                             |                            |                  |  |
| 001   | CA   | –  | –                      | 360 (359.8)                                 | +0.4                                      | –                             | –                                     | +2500                       | –                          | –                | RNAV1  |
| 002   | CF   | MD047  | –                      | 016 (015.3)                                 | +0.4                                      | –                             | –                                     | +2900                       | -210                       | –                | RNAV1  |
| 003   | TF   | RBO  | –                      | 041 (040.4)                                 | +0.4                                      | 20.5                          | –                                     | +12000                      | –                          | –                | RNAV1  |
| <b>SIE3W RNAV1:</b> Pendiente mínima de ascenso: 7.0% hasta MD913, debida a motivos operacionales. // Minimum climb gradient of 7.0% up to MD913, due to operational reasons.   |  |  |                        |   |   |                               |                                       |                             |                            |                  |  |
| 001   | CF   | MD900  | –                      | 360 (359.8)                                 | +0.4                                      | –                             | –                                     | –                           | -210                       | –                | RNAV1  |
| 002   | TF   | MD901  | Y                      | 016 (015.4)                                 | +0.4                                      | 2.9                           | –                                     | +4500                       | -220                       | –                | RNAV1  |
| 003   | TF   | MD025  | Y                      | 354 (353.6)                                 | +0.4                                      | 6.1                           | –                                     | +7000                       | -220                       | –                | RNAV1  |
| 004   | TF   | MD913  | –                      | 355 (355.1)                                 | +0.4                                      | 9.9                           | –                                     | +9000                       | -240                       | –                | RNAV1  |
| 005   | TF   | SIE  | Y                      | 355 (355.1)                                 | +0.4                                      | 15.0                          | –                                     | +12000                      | –                          | –                | RNAV1  |

| Número de serie<br>Serial number   | Descriptor de trayectoria<br>Path Terminator | Identificador de punto de recorrido<br>Waypoint identifier | Sobrevuelo<br>Fly-over | Curso/ Derrota<br>Course/Track<br>°M (°T) | Variación magnética<br>Magnetic variation | Distancia<br>Distance<br>(NM) | Dirección de viraje<br>Turn direction | Altitud<br>Altitude<br>(ft) | Velocidad<br>Speed<br>(kt) | VPA/TCH<br>(°ft) | Especificación de navegación<br>Navigation specification |
|--|--|--|------------------------|---|---|-------------------------------|---------------------------------------|-----------------------------|----------------------------|------------------|--|
| <b>VTB1R RNAV1:</b> Pendiente mínima de ascenso: 5.5% hasta MD049, debida a motivos operacionales. // Minimum climb gradient of 5.5% up to MD049, due to operational reasons.<br>No se permiten cambios en la derrota inicial de salida antes del DER. // Changes to the initial departure track are not permitted before DER. |  |  |                        |   |   |                               |                                       |                             |                            |                  |  |
| 001  | CA   | –  | –                      | 360 (359.8)                               | +0.4                                      | –                             | –                                     | +2500                       | –                          | –                | RNAV1  |
| 002  | CF   | MD047  | –                      | 016 (015.3)                               | +0.4                                      | –                             | –                                     | +2900                       | -210                       | –                | RNAV1  |
| 003  | TF   | MD048  | –                      | 041 (040.4)                               | +0.4                                      | 12.6                          | –                                     | +7000                       | -220                       | –                | RNAV1  |
| 004  | TF   | MD049  | –                      | 128 (127.1)                               | +0.4                                      | 5.0                           | –                                     | +8000                       | -240                       | –                | RNAV1  |
| 005  | TF   | PDT  | –                      | 188 (187.3)                               | +0.4                                      | 27.2                          | –                                     | +13000                      | -240                       | –                | RNAV1  |
| 006  | TF   | VTB  | Y                      | 191 (190.7)                               | +0.4                                      | 28.8                          | –                                     | +13000                      | –                          | –                | RNAV1  |
| <b>ZMR3W RNAV1:</b> Pendiente mínima de ascenso: 7.0% hasta MD025, debida a motivos operacionales. // Minimum climb gradient of 7.0% up to MD025, due to operational reasons.  |  |  |                        |   |   |                               |                                       |                             |                            |                  |  |
| 001  | CF   | MD900  | –                      | 360 (359.8)                               | +0.4                                      | –                             | –                                     | –                           | -210                       | –                | RNAV1  |
| 002  | TF   | MD901  | Y                      | 016 (015.4)                               | +0.4                                      | 2.9                           | –                                     | +4500                       | -220                       | –                | RNAV1  |
| 003  | TF   | MD025  | Y                      | 354 (353.6)                               | +0.4                                      | 6.1                           | –                                     | +7000                       | -220                       | –                | RNAV1  |
| 004  | TF   | DISKO  | –                      | 299 (299.0)                               | +0.4                                      | 34.6                          | –                                     | +12000                      | -240                       | –                | RNAV1  |
| 005  | TF   | ZMR  | Y                      | 297 (296.2)                               | +0.4                                      | 71.1                          | –                                     | +13000                      | –                          | –                | RNAV1  |

**SALIDA DE CONTINGENCIA (ODP) LEMD UNO WHISKY (LEMD1W). SOLO USO TÁCTICO. NO PLANIFICABLE.**

Las aeronaves de salida sin aprobación operacional RNAV1 deberán notificarlo a Madrid TWR lo antes posible (FRECUENCIA DE CLR) y serán instruidas a proceder de acuerdo con lo establecido en esta salida de contingencia.

Antes de iniciar el despegue, comprobar la frecuencia del Sector DESPEGUES.

Subir en rumbo de pista hasta alcanzar 6500 ft AMSL y esperar instrucciones ATC.

Pendiente mínima de ascenso 7.0% hasta 6500 ft AMSL.

En caso de fallo de comunicaciones, proceder según lo establecido en AD 2-LEMD casilla 22 y en la sección ENR 1.8, apartado "Fallo de las comunicaciones aeroterrestres" de AIP-España.

**CONTINGENCY DEPARTURE (ODP) LEMD ONE WHISKY (LEMD1W). TACTICAL USE ONLY. UNPLANNED.**

Departing aircraft without RNAV1 operational approval shall notify to Madrid TWR as soon as possible (CLR FREQUENCY) and will be instructed to proceed as provided in this contingency departure.

Before starting the take-off, frequency of Sector DESPEGUES must be verified.

Climb on runway heading up to reach 6500 ft AMSL and await for ATC instructions.

Minimum climb gradient of 7.0% up to 6500 ft AMSL.

In case of communication failure, proceed according to the established in AD 2-LEMD item 22 and in section ENR 1.8, item "Air ground Communication Failure" in AIP ESPAÑA.

| OBSTÁCULOS CERCANOS QUE PENETRAN LA OIS // CLOSE-IN OBSTACLES WHICH PENETRATE THE OIS |     |              |               |          |           |
|---|-----|--------------|---------------|----------|-----------|
| OBST  | RWY | LAT          | LONG          | HGT (ft) | ELEV (ft) |
| Árbol // Tree   | 36R | 40°32'11.2"N | 003°33'26.1"W | 50       | 1960      |
| Árbol // Tree   | 36R | 40°32'10.8"N | 003°33'26.4"W | 44       | 1952      |
| Árbol // Tree   | 36R | 40°32'11.2"N | 003°33'26.7"W | 41       | 1949      |
| Vegetación // Vegetation  | 36R | 40°32'22.8"N | 003°33'26.1"W | 73       | 1981      |
| Vegetación // Vegetation  | 36R | 40°32'23.3"N | 003°33'26.9"W | 67       | 1980      |

| OBSTÁCULOS SIGNIFICATIVOS // SIGNIFICANT OBSTACLES |     |              |               |          |           |
|--|-----|--------------|---------------|----------|-----------|
| OBST   | RWY | LAT          | LONG          | HGT (ft) | ELEV (ft) |
| Torre eléctrica // Electrical tower                | 36R | 40°33'13.6"N | 003°32'43.9"W | 130      | 2174      |
| Terreno // Ground                                  | 36R | 40°43'45.5"N | 003°42'37.2"W | 0        | 4661      |
| Terreno // Ground                                  | 36R | 40°48'55.6"N | 003°49'40.6"W | 0        | 6946      |
| Vértice Geodésico // Geodetic vertex               | 36R | 40°50'17.9"N | 003°42'42.4"W | –        | 5064      |
| Terreno // Ground                                  | 36R | 40°50'40.0"N | 003°47'13.5"W | 0        | 6109      |
| Terreno // Ground                                  | 36R | 40°48'20.9"N | 003°52'58.6"W | 0        | 7343      |
| Grúa // Crane                                      | 36R | 40°34'36.4"N | 003°32'37.4"W | 159      | 2214      |
| Torre // Tower                                     | 36R | 40°33'11.5"N | 003°33'02.6"W | 171      | 2101      |

**INTENCIONADAMENTE EN BLANCO**  
**INTENTIONALLY BLANK**