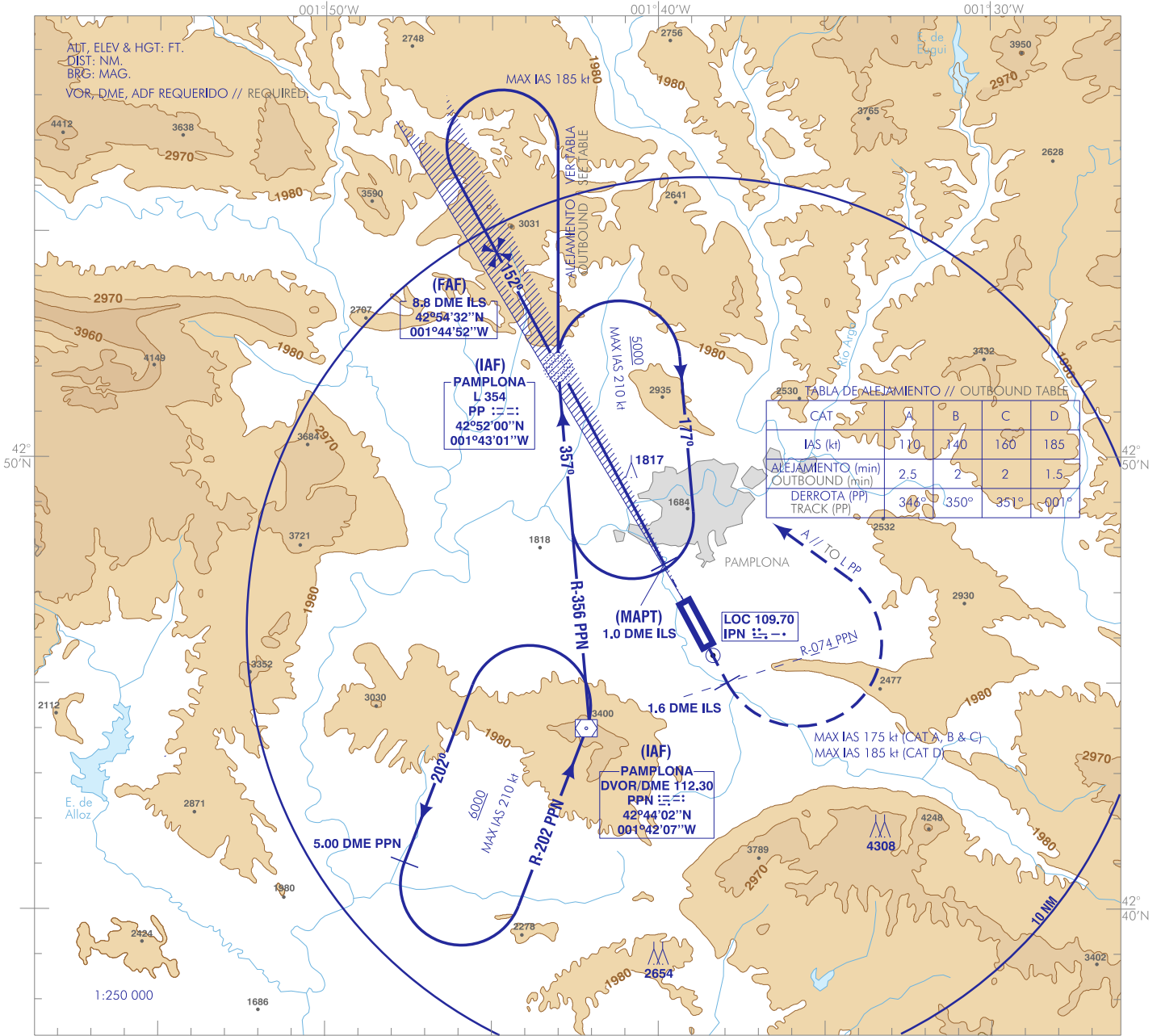


CARTA DE APROXIMACIÓN  
POR INSTRUMENTOS-OACI

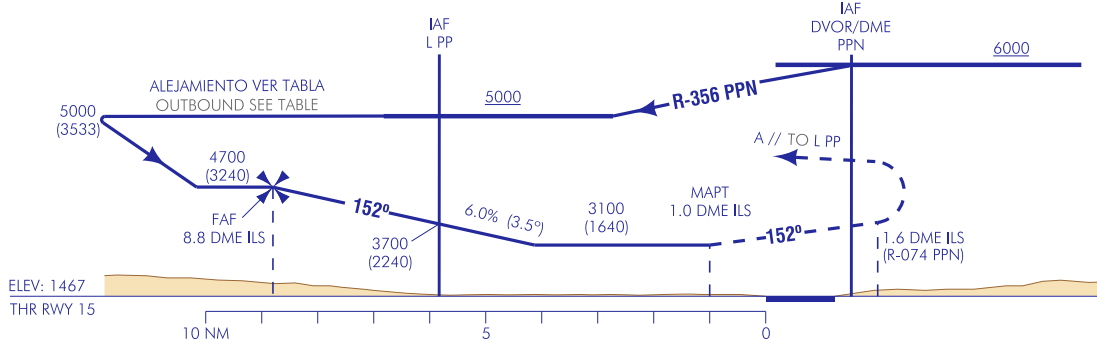
ELEV AD  
1506  
VAR 1°W (2015)

APP/TWR 118.200  
GMC 121.700

PAMPLONA  
LOC Y  
RWY 15



**FRUSTRADA:** SUBIR EN RUMBO DE PISTA HASTA 1.6 DME ILS (R-074 PPN). VIRAR A LA IZQUIERDA (IAS MAX 175 kt CAT A, B & C Y 185 kt CAT D) DIRECTO A CRUZAR L PP A 4000 O SUPERIOR, SUBIENDO A 5000 PARA INTEGRARSE A LA ESPERA.  
**MISSED APCH:** CLIMB ON RUNWAY HEADING UP TO 1.6 DME ILS (R-074 PPN). TURN LEFT (MAX IAS 175 kt CAT A, B & C AND 185 kt CAT D) DIRECT TO CROSS L PP AT 4000 OR ABOVE, CLIMBING TO 5000 TO JOIN THE HOLDING.

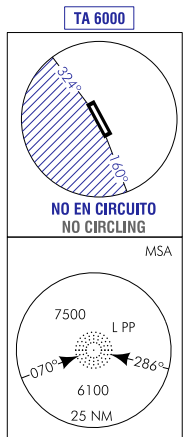


HGT REF ELEV THR RWY 15

OCA/H	A	B	C	D
2.5%		3100 (1640)		
<b>En círculo (H) sobre Circling (H) over 1506</b>	3100 (1600)	3620 (2120)	4700 (3200)	

GS	kt	80	100	120	140	160	180
<b>FAF-THR:</b>	min:s						
<b>FAF-MAPT:</b>	min:s	NO AUTORIZADO EL CRONOMETRAJE // TIMING NOT AUTHORIZED					
<b>ROD: 6.0%</b>	ft/min	490	612	735	857	980	1102

ALT/HGT DME (ILS) FNA										
13	12	11	10	9	8	7	6	5	4	3
					4460 (2990)	4090 (2630)	3730 (2260)	3360 (1890)		



CAMBIOS: ELEV SECTOR EN CUADRO MSA, IDIOMA. CHANGES: SECTOR ELEV IN MSA BOX, LANGUAGE.