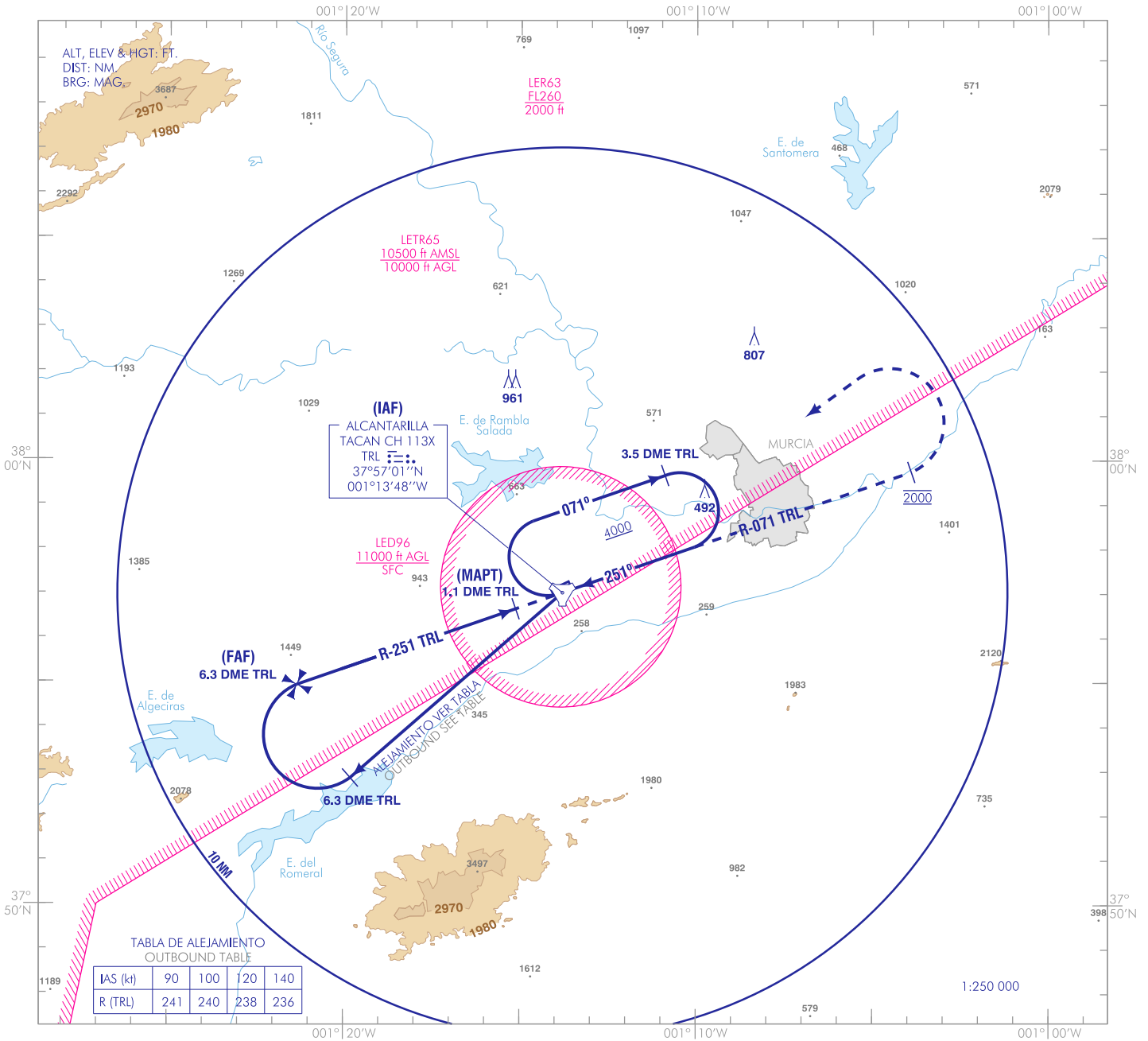


CARTA DE APROXIMACIÓN  
POR INSTRUMENTOS-MIPS

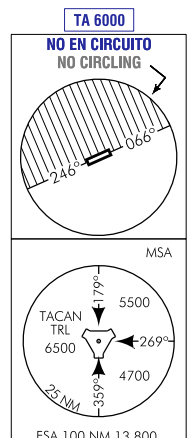
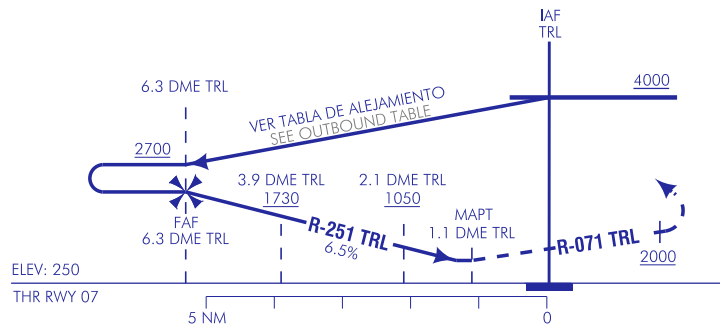
ELEV  
250  
VAR 0° (2020)

TWR 118.100 MHz  
139.075 MHz

MURCIA/Alcantarilla  
TACAN  
RWY 07



**FRUSTRADA:** SUBIR EN R-071 TRL A 2000. VIRAR A LA IZQUIERDA DIRECTO A TACAN TRL SUBIENDO A 4000 E INCORPORARSE A LA ESPERA.  
**MISSED APCH:** CLIMB ON R-071 TRL TO 2000. TURN LEFT DIRECT TO TRL TACAN CLIMBING TO 4000 AND HOLD.



HGT REF ELEV THR RWY 07

CAT	A	B	HPMA
S-TACAN	710 / 1.6 460 (500-1.6)		
CIRCUITO CIRCLING	810/1.6 560 (600-1.6)	1150/2.0 900 (900-2.0)	

GS	kt	80	100	120	140	160	180
FAF-THR:	min:s						
FAF-MAPT: 5.2 NM	min:s	3:54	3:07	2:36	2:14	1:57	1:44
ROD: 6.5 %	ft/min	527	658	790	922	1060	1192

ALT DME (TRL) FNA										
13	12	11	10	9	8	7	6	5	4	3
							2590	2190	1800	1400
								1010	610	

CARTA NUEVA.  
NEW CHART.

**INTENCIONADAMENTE EN BLANCO**  
**INTENTIONALLY BLANK**