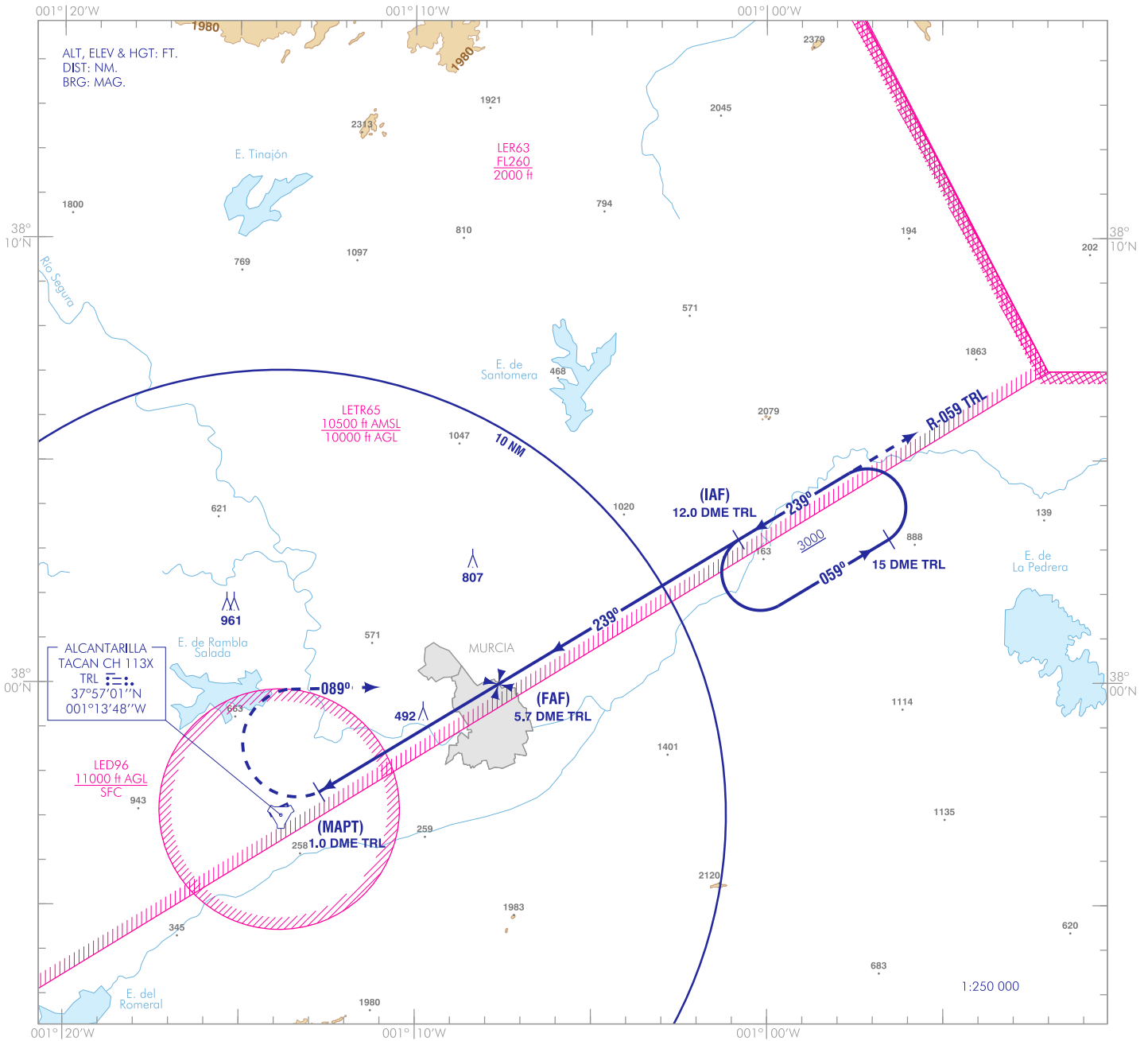


CARTA DE APROXIMACIÓN
POR INSTRUMENTOS-MIPS

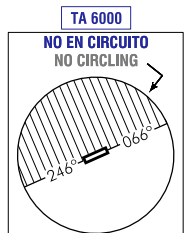
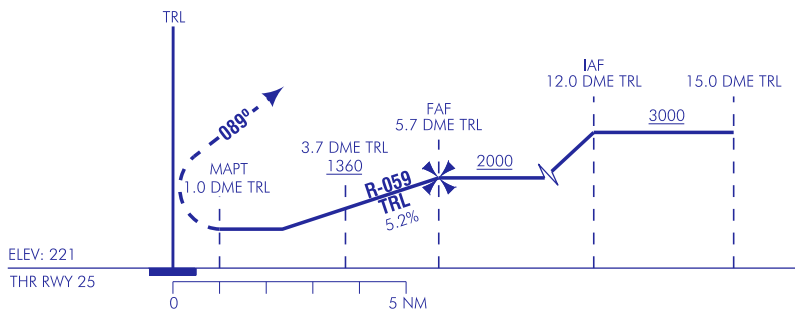
ELEV
221
VAR 0° (2020)

TWR 118.100 MHz
139.075 MHz

MURCIA/Alcantarilla
TACAN
RWY 25



FRUSTRADA: VIRAR A LA DERECHA EN MAPT RUMBO MAGNÉTICO 089° SUBIENDO A 3000 PARA INTERCEPTAR R-059 TRL DIRECTO IAF E INCORPORARSE A LA ESPERA.
MISSED APCH: TURN RIGHT ON MAPT MAGNETIC HEADING 089° CLIMBING TO 3000 TO INTERCEPT R-059 TRL DIRECT TO IAF AND HOLD.

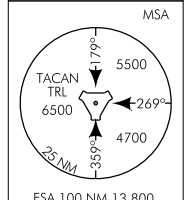


HGT REF ELEV THR RWY 25

CAT	A	B	HPMA
S-TACAN	580 / 1.6 330 (400-1.6)		
CIRCUITO CIRCLING	810/1.6 560 (600-1.6)	1150/2.0 900 (900-2.0)	

GS	kt	80	100	120	140	160	180
FAP-THR:	min:s						
FAF-MAPT: 4.7 NM	min:s	3:33	2:51	2:22	2:02	1:46	1:34
ROD: 5.2 %	ft/min	425	531	637	743	849	955

ALT DME (TRL) FNA												
13	12	11	10	9	8	7	6	5	4	3	2	1
								2210	1820	1420	1030	



CARTA NUEVA.
NEW CHART.

INTENCIONADAMENTE EN BLANCO
INTENTIONALLY BLANK