

PLANO DE AERÓDROMO-OACI

40°57'07"N
005°30'07"W

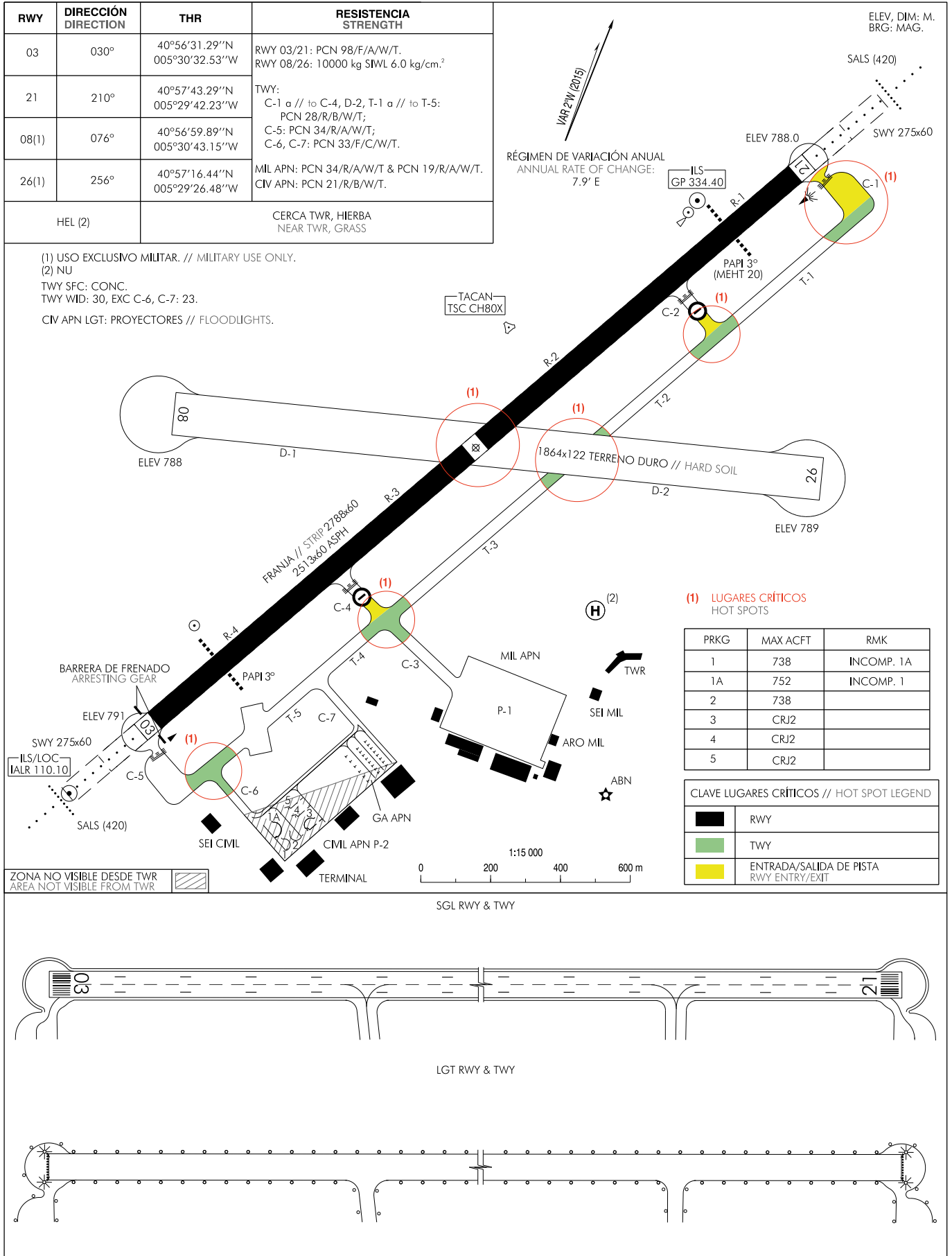
ELEV 791

TWR 118.100
GMC 121.850

SALAMANCA/Matacán

| RWY | DIRECCIÓN | THR | RESISTENCIA STRENGTH |
|---------|-----------|---------------------------------|--|
| 03 | 030° | 40°56'31.29"N 005°30'32.53"W | RWY 03/21: PCN 98/F/A/W/T. RWY 08/26: 10000 kg SIWL 6.0 kg/cm ² |
| 21 | 210° | 40°57'43.29"N 005°29'42.23"W | TWY: C-1 a // to C-4, D-2, T-1 a // to T-5: PCN 28/R/B/W/T; C-5: PCN 34/R/A/W/T; C-6, C-7: PCN 33/F/C/W/T. |
| 08(1) | 076° | 40°56'59.89"N 005°30'43.15"W | MIL APN: PCN 34/R/A/W/T & PCN 19/R/A/W/T. CIV APN: PCN 21/R/B/W/T. |
| 26(1) | 256° | 40°57'16.44"N 005°29'26.48"W | MIL APN: PCN 34/R/A/W/T & PCN 19/R/A/W/T. CIV APN: PCN 21/R/B/W/T. |
| HEL (2) | | | CERCA TWR, HIERBA NEAR TWR, GRASS |

(1) USO EXCLUSIVO MILITAR. // MILITARY USE ONLY.
(2) NU
TWY SFC: CONC.
TWY WID: 30, EXC C-6, C-7: 23.
CIV APN LGT: PROYECTORES // FLOODLIGHTS.



INTENCIONADAMENTE EN BLANCO
INTENTIONALLY BLANK