

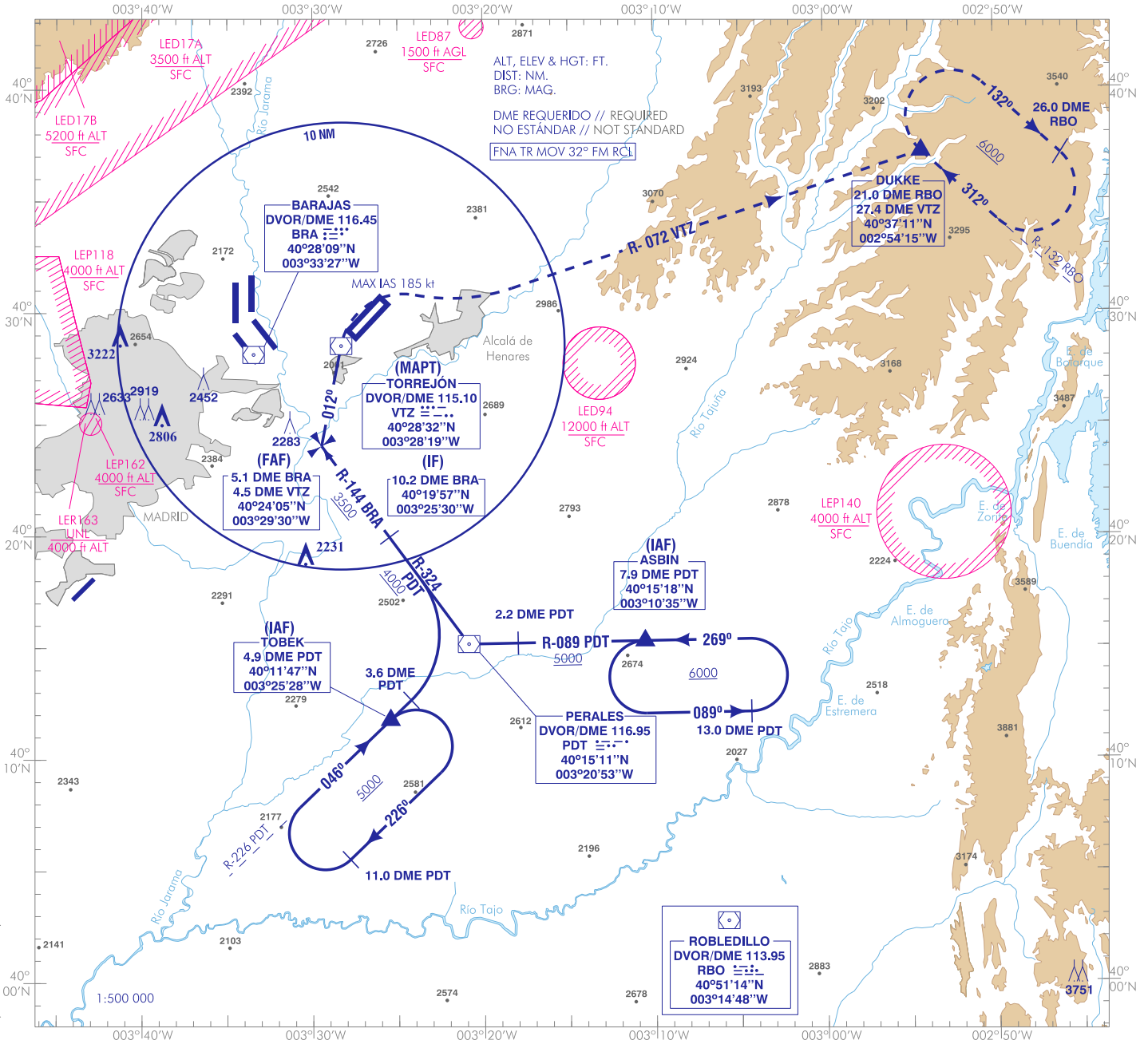
CARTA DE APROXIMACIÓN
POR INSTRUMENTOS-MIPS

ELEV AD
2026
VAR 0° (2020)

TORREJÓN APP 119.950 MHz
258.925 MHz
MADRID APP 127.505 MHz
127.100 MHz

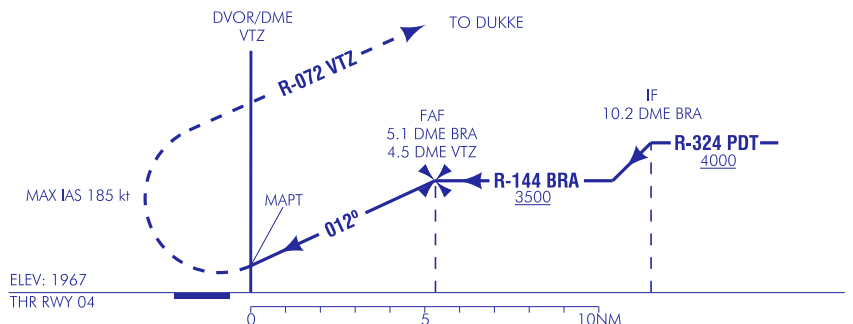
TWR 122.100 MHz
339.600 MHz
GMC 118.300 MHz
396.900 MHz

MADRID/Torrejón
VOR A



FRUSTRADA: VIRAR A LA DERECHA LO ANTES POSIBLE (IAS MAX EN VIRAJE 185 kt / HPMA 250 kt) PARA INTERCEPTAR Y SEGUIR R-072 VTZ DIRECTO A DUKKE PARA INTEGRARSE A LA ESPERA A 6000.
MISSED APPROACH: TURN RIGHT AS SOON AS POSSIBLE (MAX IAS ON TURN 185 kt / HPMA 250 kt) TO INTERCEPT AND FOLLOW R-072 VTZ DIRECT TO DUKKE FOR JOIN TO HOLDING TO 6000.

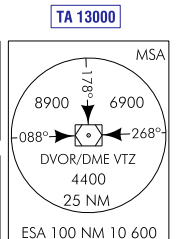
NOTAS:
- DISTANCIA MAPT -THR RWY 04: 0.8 NM
NOTES:
- DISTANCE MAPT -THR RWY 04: 0.8 NM



HGT REF ELEV AD

CAT	A	B	C	D	HPMA
S-VOR	RESTRINGIDA A CIRCUITO RESTRICTED TO CIRCLING				
CIRCUITO CIRCLING	3200/4.6* (1180) (1200-4.6)	3280/5.0 (1260) (1300-5.0)	3380/5.0 (1360) (1400-5.0)	3480/5.0 (1460) (1500-5.0)	3280/5.0 (1260) (1300-5.0)
* CUANDO ALS U/S INCREMENTAR VIS EN 0.4 km * WHEN ALS U/S INCREASE VIS BY 0.4 km					

GS	kt	80	100	120	140	160	180
FAF-THR:							
FAF-MAPT:	min:s						
ROD:	ft/min						
ALT/HGT DME (VTZ) FNA							
13	12	11	10	9	8	7	6



MADRID/Torrejón AD

REQUISITOS DE LA BASE DE DATOS AERONÁUTICA
 AERONAUTICAL DATABASE REQUIREMENTS

PROCEDIMIENTOS DE APROXIMACIÓN POR INSTRUMENTOS // INSTRUMENT APPROACH PROCEDURES

→ VOR A

PUNTO POINT	LAT	LONG	AZIMUT VERDADERO TRUE BEARING	DISTANCIA DME DME DISTANCE (NM)
ASBIN (IAF)	40°15'18.3"N	003°10'34.8"W	089.00 (PDT)	7.88 DME PDT
TOBEK (IAF)	40°11'46.7"N	003°25'28.0"W	226.00 (PDT)	4.89 DME PDT
IF	40°19'57.0"N	003°25'29.7"W	143.38 (BRA)	10.20 DME BRA
FAF	40°24'05.0"N	003°29'30.2"W	143.38 (BRA) 191.46 (VTZ)	5.06 DME BRA 4.54 DME VTZ
DVOR/DME VTZ (MAPT)	40°28'32.2"N	003°28'19.3"W	-	-
DUKKE (MAHWP)	40°37'11.2"N	002°54'15.0"W	131.83 (RBO) 071.41 (VTZ)	21.00 DME RBO 27.37 DME VTZ
Aproximación final de no precisión - Pendiente (Ángulo de descenso) // Non-precision final approach - Slope (Descent angle)				-