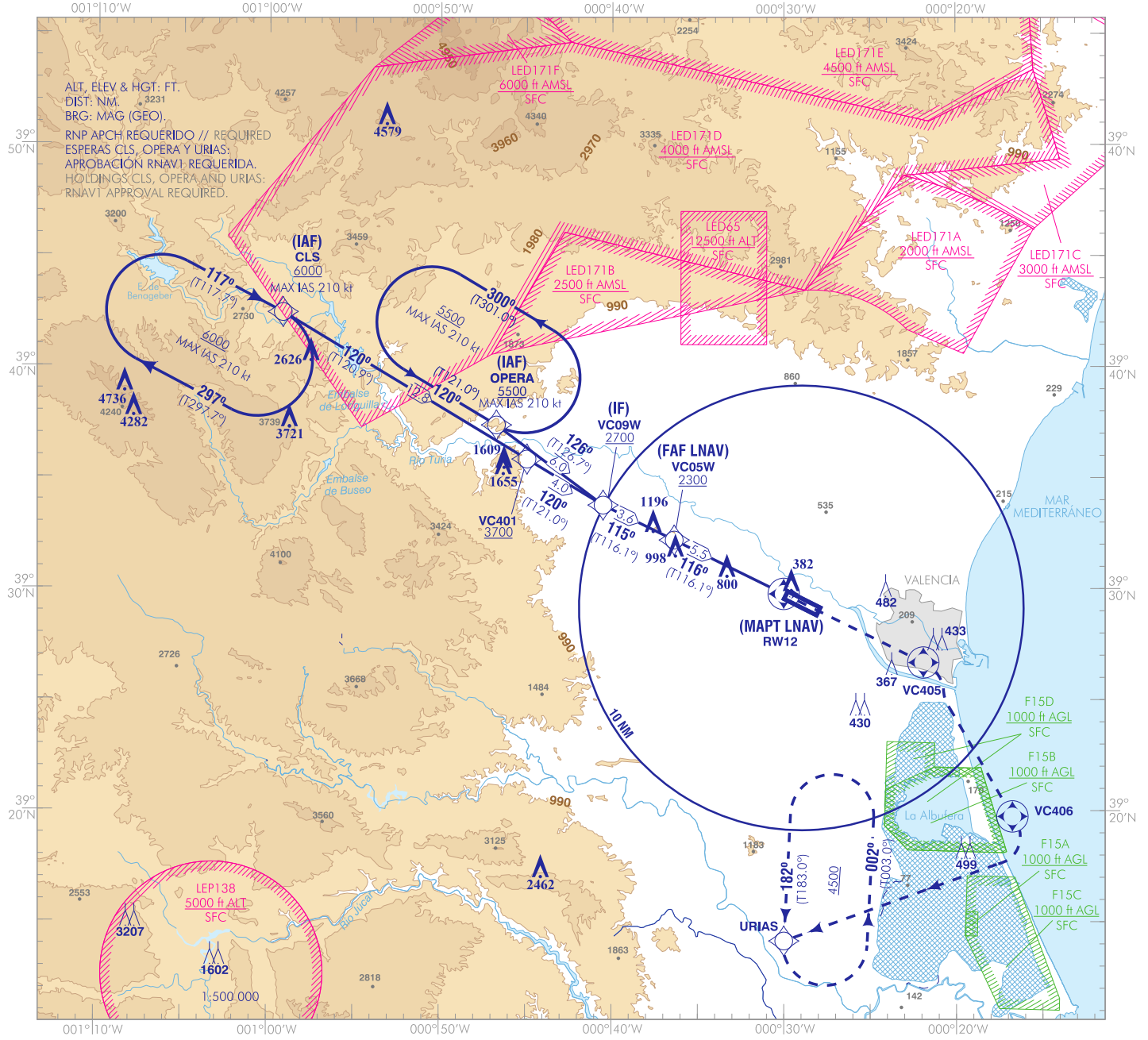


CARTA DE APROXIMACIÓN POR INSTRUMENTOS-OACI

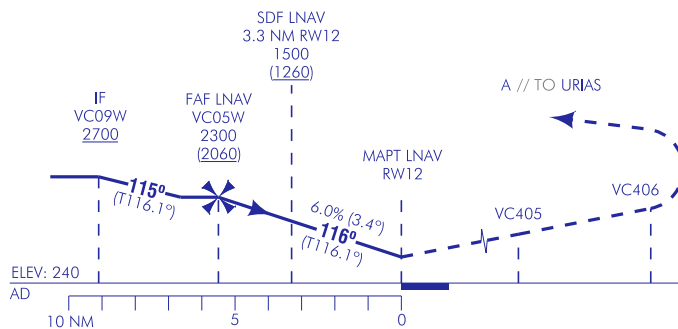
ELEV AD
240
VAR 1°E (2020)

APP 120.100
TWR 118.550
GMC 121.875
ATIS 121.075

VALENCIA
RNP Y
RWY 12



FRUSTRADA: SUBIR DIRECTO HASTA VC405. VIRAR A LA DERECHA DIRECTO HASTA VC406. VIRAR A LA DERECHA DIRECTO HASTA VC405 PARA INTEGRARSE A LA ESPERA A 4500 O SUPERIOR. ESPERAR INSTRUCCIONES ATC.
MISSED APCH: CLIMB DIRECT UP TO VC405. TURN RIGHT DIRECT TO VC406. TURN RIGHT DIRECT TO URIAS TO JOIN THE HOLDING URIAS PARA INTEGRARSE A LA ESPERA A 4500 O SUPERIOR. AWAIT ATC INSTRUCTIONS.



CAMBIOS: REPRESENTACION WPT CLS.
CHANGES: WPT CLS REPRESENTATION.

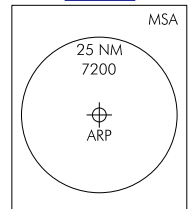
HGT REF ELEV AD

| STA | OCA/H | | | |
|-----------------------|------------|------------|-------------|-------------|
| | A | B | C | D |
| En circuito (H) sobre | 1070 (840) | 1100 (870) | 1230 (1000) | 1640 (1410) |
| Clrcilling (H) over | | | | |

| GS | kt | 80 | 100 | 120 | 140 | 160 | 180 |
|------------|--------|-----|-----|-----|-----|-----|------|
| FAF-THR: | min:s | | | | | | |
| FAF-MAPT: | min:s | | | | | | |
| ROD: 6.0 % | ft/min | 488 | 610 | 733 | 855 | 977 | 1099 |

| ALT/HGT RWY 12 FNA | | | | | | | |
|--------------------|-------------|-------------|----|---|---|---|---|
| 13 | 12 | 11 | 10 | 9 | 8 | 7 | 6 |
| 5 | 4 | 3 | 2 | 1 | | | |
| 2130 (1890) | 1760 (1520) | 1390 (1150) | | | | | |

TA 6000



03-NOV-22 (AMDT 360/22)

AIP-ESPAÑA

AD 2-LEVC IAC/7.1

VALENCIA AD

REQUISITOS DE LA BASE DE DATOS AERONÁUTICA
 AERONAUTICAL DATABASE REQUIREMENTS

PROCEDIMIENTOS DE APROXIMACIÓN POR INSTRUMENTOS // INSTRUMENT APPROACH PROCEDURES

RNP Y RWY 12

| COORDENADAS WAYPOINTS // WAYPOINTS COORDINATES | |
|--|----------------------------|
| WPT | COORD |
| CLS (IAF) | 39°42'26.0"N 000°59'11.2"W |
| OPERA (IAF) | 39°37'21.9"N 000°46'44.1"W |
| RW12 (MAPt) | 39°29'46.9"N 000°30'00.4"W |
| URIAS | 39°14'09.0"N 000°29'59.6"W |
| VC05W (FAF) | 39°32'12.0"N 000°36'22.5"W |
| VC09W (IF) | 39°33'46.2"N 000°40'31.0"W |
| VC401 | 39°35'50.1"N 000°44'57.0"W |
| VC405 | 39°26'41.2"N 000°21'53.8"W |
| VC406 | 39°19'45.1"N 000°16'44.5"W |

| | |
|--|---------------|
| Aproximación final de no precisión (LNAV) - Pendiente (Ángulo de descenso) // Non-precision final approach (LNAV) - Slope (Descent Angle) | 6.03% (3.45°) |
|--|---------------|

| DESCRIPCIÓN TABULAR DEL PROCEDIMIENTO PROCEDURE TABULAR DESCRIPTION | | | | | | | | | | | |
|--|--|--|------------------------|---------------------------------------|---|----------------------------|---------------------------------------|--------------------------|-------------------------|-------------------|--|
| Número de serie Serial number | Descriptor de trayectoria Path Terminator | Identificador de punto de recorrido Waypoint identifier | Sobrevuelo Fly-over | Curso/Derrota Course/Track °M (°T) | Variación magnética Magnetic variation | Distancia Distance (NM) | Dirección de viraje Turn direction | Altitud Altitude (ft) | Velocidad Speed (kt) | VPA/TCH (°/ft) | Especificación de navegación Navigation specification |
| CLS (IAF) | | | | | | | | | | | |
| 001 | IF | CLS | - | - | - | - | - | +6000 | -210 | - | RNP APCH |
| 002 | TF | VC401 | - | 120 (120.9) | -0.6 | 12.8 | - | +3700 | - | - | RNP APCH |
| 003 | TF | VC09W | - | 120 (121.0) | -0.6 | 4.0 | - | +2700 | - | - | RNP APCH |
| 004 | TF | VC05W | - | 115 (116.1) | -0.6 | 3.6 | - | +2300 | - | - | RNP APCH |
| 005 | TF | RW12 | Y | 116 (116.1) | -0.6 | 5.5 | - | +289 | - | -3.4/49 | RNP APCH |
| 006 | DF | VC405 | Y | - | -0.6 | - | - | - | - | - | RNP APCH |
| 007 | DF | VC406 | Y | - | -0.6 | - | - | - | - | - | RNP APCH |
| 008 | DF | URIAS | - | - | -0.6 | - | R | +4500 | - | - | RNP APCH |
| OPERA (IAF) | | | | | | | | | | | |
| 001 | IF | OPERA | - | - | -0.6 | - | - | +5500 | -210 | - | RNP APCH |
| 002 | TF | VC09W | - | 126 (126.7) | -0.6 | 6.0 | - | +2700 | - | - | RNP APCH |
| 003 | TF | VC05W | - | 115 (116.1) | -0.6 | 3.6 | - | +2300 | - | - | RNP APCH |
| 004 | TF | RW12 | Y | 116 (116.1) | -0.6 | 5.5 | - | +289 | - | -3.4/49 | RNP APCH |
| 005 | DF | VC405 | Y | - | -0.6 | - | - | - | - | - | RNP APCH |
| 006 | DF | VC406 | Y | - | -0.6 | - | - | - | - | - | RNP APCH |
| 007 | DF | URIAS | - | - | -0.6 | - | R | +4500 | - | - | RNP APCH |

| CIRCUITOS DE ESPERA // HOLDING PATTERN | | | | | | | | | | |
|--|--|------------------------|---------------------------------------|---|---|---------------------------------------|----------------------------------|----------------------------------|-------------------------|--|
| Descriptor de trayectoria Path terminator | Identificador de punto de recorrido Waypoint identifier | Sobrevuelo Fly-over | Curso/Derrota Course/Track °M (°T) | Variación magnética Magnetic variation | Distancia/ Tiempo de alejamiento Distance/ Outbound time | Dirección de viraje Turn direction | Altitud MNM MNM altitude (ft) | Altitud MAX MAX altitude (ft) | Velocidad Speed (kt) | Especificación de navegación Navigation specification |
| HM | CLS | - | 117 (117.7) | -0.6 | 1 MIN | R | +6000 | - | -210 | RNAV 1 |
| HM | OPERA | - | 120 (121.0) | -0.6 | 1 MIN | L | +5500 | - | -210 | RNAV 1 |
| HM | URIAS | - | 182 (183.0) | -0.6 | 1 MIN | L | +4500 | - | - | RNAV 1 |