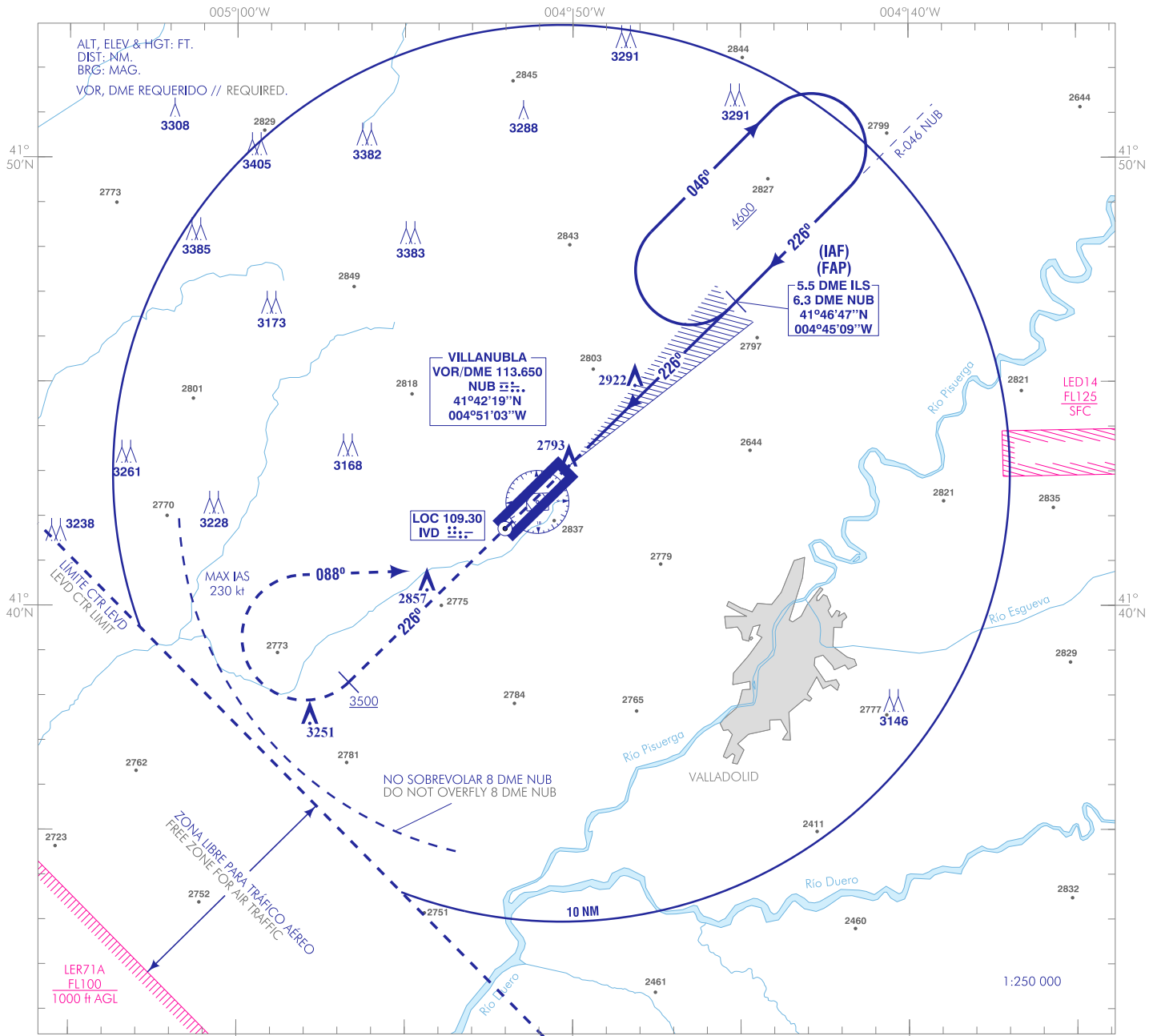


CARTA DE APROXIMACIÓN
POR INSTRUMENTOS-MIPS

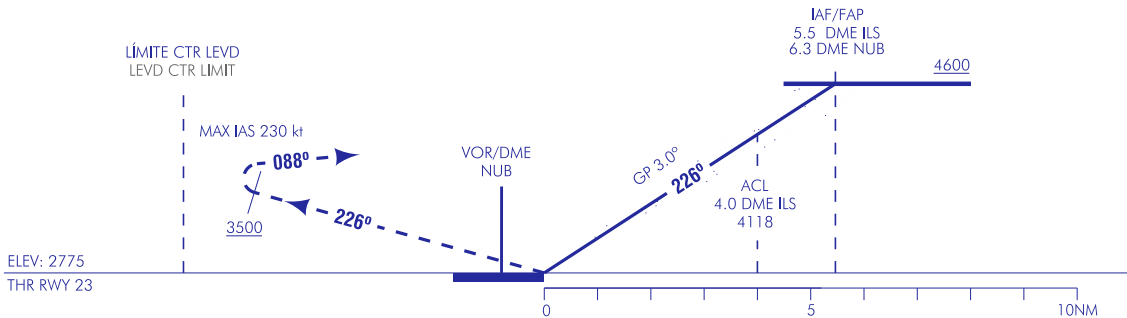
ELEV AD
2775
VAR 1°W (2020)

APP 122.200
TWR 139.300

VALLADOLID/Villanubla
ILS
RWY 23



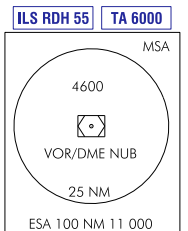
FRUSTRADA: SUBIR DIRECTO HASTA ALCANZAR 3500. (MIRAR DERECHA (IAS MAX 230 kt), NO SOBREPASAR EL LIMITE DEL CTR, RUMBO MAGNÉTICO 088° PARA INTERCEPTAR R-046/226 NUB Y PROCEDER HASTA IAF ASCIENDIENDO A 4600 PARA INTEGRARSE EN LA ESPERA.
MISSED APCH: CLIMB STRAIGHT AHEAD TO 3500. TURN RIGHT (MAX IAS 230KT), DO NOT EXCEED CTR LIMIT, MAGNETIC HEADING 088° TO INTERCEPT R-046/226 NUB AND PROCEED TO IAF CLIMBING TO 4600 AND HOLD.



HGT REF ELEV THR RWY 05

| OCA/H | A | B | C | D |
|---|----------------------------|---------------------------|----------------------------|-----------------------------|
| S - ILS CAT I | 2975-0.8* 200 (200-0.8) | | | |
| S - ILS CAT II | 2875-0.4* 100 (100-0.4) | | 2878-0.4* 103 (200-0.4) | |
| En circuito (H) sobre Circling (H) 2775 over | 3180-1.5 410 (500-1.5) | 3270-1.6 500 (500-1.6) | 3570-2.4 800 (800-2.4) | 3780-3.6 1010 (1100-3.6) |
| * CUANDO ALS U/S INCREMENTAR VIS EN 0.4 km * WHEN ALS U/S INCREASE VIS IN 0.4 km | | | | |

| GS | kt | 80 | 100 | 120 | 140 | 160 | 180 |
|-------------------|--------|--|-----|-----|-----|------|------|
| FAP-THR: | min:s | | | | | | |
| FAF-MAPT: | min:s | NO AUTORIZADO EL CRONOMETRAJE // TIMING NOT AUTHORIZED | | | | | |
| ROD: 5.2 % | ft/min | 425 | 530 | 636 | 742 | 849 | 955 |
| ALT DME (ILS) FNA | | | | | | | |
| | 13 | 12 | 11 | 10 | 9 | 8 | 7 |
| | | | | | | | |
| | | | | | | | |
| | | | | | | 4450 | 4120 |
| | | | | | | 3800 | 3480 |



NUEVA CARTA.
NEW CHART.

INTENCIONADAMENTE EN BLANCO
INTENTIONALLY BLANK