

CARTA DE LLEGADA NORMALIZADA  
VUELO POR INSTRUMENTOS (STAR)-OACI

TA 6000  
VAR 0° (2020)

APP 118.450  
TWR 118.450

BLV1C  
PPN1K

CEGAM2A  
PPN1N

RWY04  
DGO1C  
NEA2E

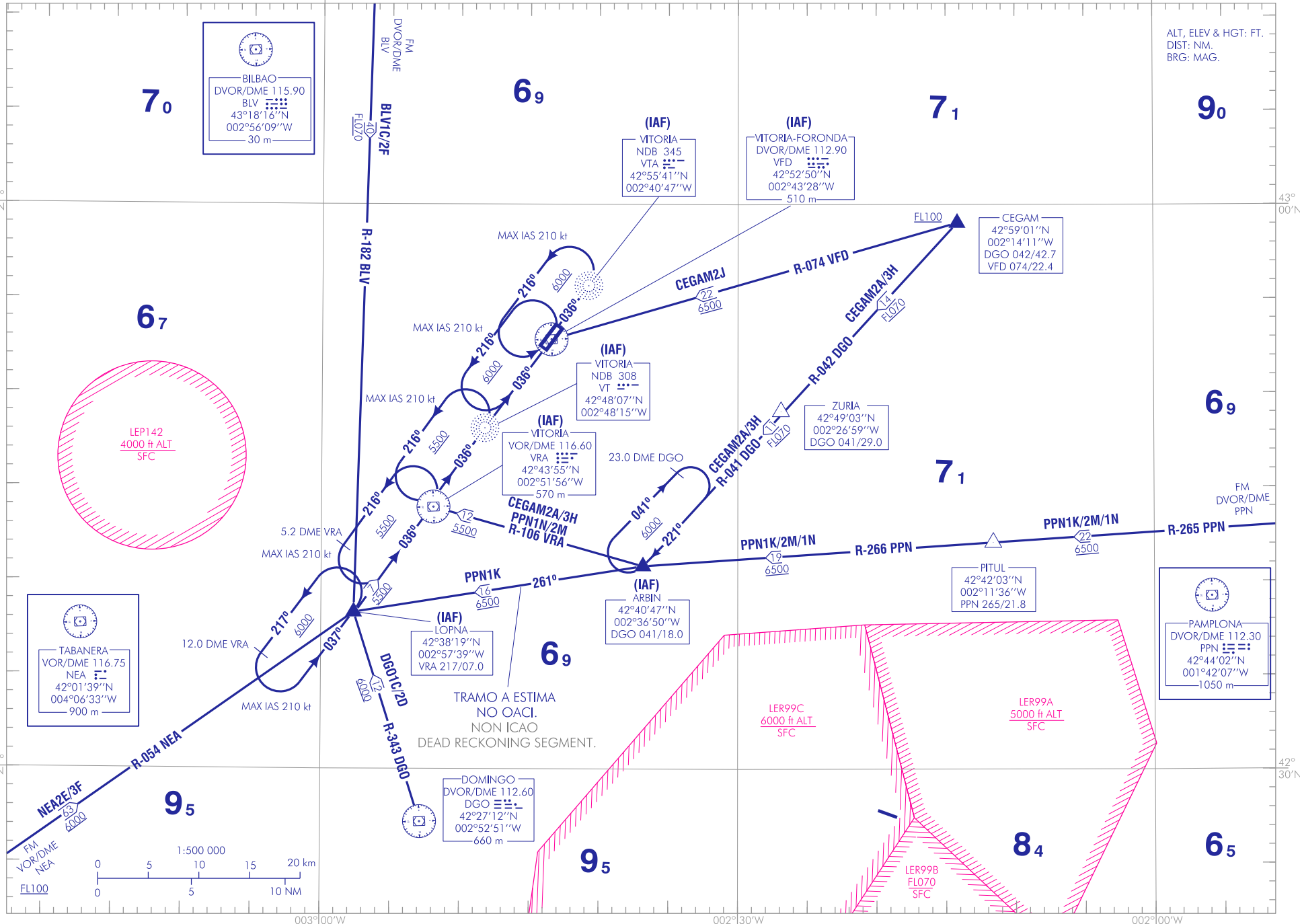
BLV2F  
DGO2D

CEGAM3H  
PPN2M

VITORIA  
RWY22  
CEGAM2J  
NEA3F

ALT, ELEV & HGT: FT.  
DIST: NM.  
BRG: MAG.

CAMBIOS: ANA Y COORD DVOR EN LUGAR DEL DME.  
CHANGES: ANA AND COORD DVOR INSTEAD OF DME.



**INTENCIONADAMENTE EN BLANCO**  
**INTENTIONALLY BLANK**

VITORIA AD

LLEGADAS NORMALIZADAS POR INSTRUMENTOS (STAR)

PISTA 04

**LLEGADA BILBAO UNO CHARLIE (BLV1C)**  
DVOR/DME BLV, LOPNA (IAF), VOR/DME VRA (IAF), NDB VT (IAF).

**LLEGADA CEGAM DOS ALPHA (CEGAM2A)**  
CEGAM, ZURIA, ARBIN (IAF), VOR/DME VRA (IAF), NDB VT (IAF).

**LLEGADA DOMINGO UNO CHARLIE (DGO1C)**  
DVOR/DME DGO, LOPNA (IAF), VOR/DME VRA (IAF), NDB VT (IAF).

**LLEGADA PAMPLONA UNO KILO (PPN1K)**  
DVOR/DME PPN, PITUL, ARBIN (IAF), LOPNA (IAF), VOR/DME VRA (IAF), NDB VT (IAF).

**LLEGADA PAMPLONA UNO NOVEMBER (PPN1N)**  
DVOR/DME PPN, PITUL, ARBIN (IAF), VOR/DME VRA (IAF), NDB VT (IAF).

**LLEGADA TABANERA DOS ECHO (NEA2E). Sujeta a la actividad de la LED10**  
VOR/DME NEA, LOPNA (IAF), VOR/DME VRA (IAF), NDB VT (IAF).

PISTA 22

**LLEGADA BILBAO DOS FOXTROT (BLV2F)**  
DVOR/DME BLV, LOPNA, VOR/DME VRA, NDB VT, DVOR/DME VFD (IAF), NDB VTA (IAF).

**LLEGADA CEGAM TRES HOTEL (CEGAM3H)**  
CEGAM, ZURIA, ARBIN, VOR/DME VRA, NDB VT, DVOR/DME VFD (IAF), NDB VTA (IAF).

**LLEGADA CEGAM DOS JULIETT (CEGAM2J)**  
CEGAM, DVOR/DME VFD (IAF).

**LLEGADA DOMINGO DOS DELTA (DGO2D)**  
DVOR/DME DGO, LOPNA, VOR/DME VRA, NDB VT, DVOR/DME VFD (IAF), NDB VTA (IAF).

**LLEGADA PAMPLONA DOS MIKE (PPN2M)**  
DVOR/DME PPN, PITUL, ARBIN, VOR/DME VRA, NDB VT, DVOR/DME VFD (IAF).

**LLEGADA TABANERA TRES FOXTROT (NEA3F). Sujeta a la actividad de la LED10**  
VOR/DME NEA, LOPNA, VOR/DME VRA, NDB VT, DVOR/DME VFD (IAF), NDB VTA (IAF).

STANDARD INSTRUMENT ARRIVALS (STAR).

RUNWAY 04

**BILBAO ONE CHARLIE ARRIVAL (BLV1C)**  
DVOR/DME BLV, LOPNA (IAF), VOR/DME VRA (IAF), NDB VT (IAF).

**CEGAM TWO ALPHA ARRIVAL (CEGAM2A)**  
CEGAM, ZURIA, ARBIN (IAF), VOR/DME VRA (IAF), NDB VT (IAF).

**DOMINGO ONE CHARLIE ARRIVAL (DGO1C)**  
DVOR/DME DGO, LOPNA (IAF), VOR/DME VRA (IAF), NDB VT (IAF).

**PAMPLONA ONE KILO ARRIVAL (PPN1K)**  
DVOR/DME PPN, PITUL, ARBIN (IAF), LOPNA (IAF), VOR/DME VRA (IAF), NDB VT (IAF).

**PAMPLONA ONE NOVEMBER ARRIVAL (PPN1N)**  
DVOR/DME PPN, PITUL, ARBIN (IAF), VOR/DME VRA (IAF), NDB VT (IAF).

**TABANERA TWO ECHO ARRIVAL (NEA2E). Subject to LED10 activity**  
VOR/DME NEA, LOPNA (IAF), VOR/DME VRA (IAF), NDB VT (IAF).

RUNWAY 22

**BILBAO TWO FOXTROT ARRIVAL (BLV2F)**  
DVOR/DME BLV, LOPNA, VOR/DME VRA, NDB VT, DVOR/DME VFD (IAF), NDB VTA (IAF).

**CEGAM THREE HOTEL ARRIVAL (CEGAM3H)**  
CEGAM, ZURIA, ARBIN, VOR/DME VRA, NDB VT, DVOR/DME VFD (IAF), NDB VTA (IAF).

**CEGAM TWO JULIETT ARRIVAL (CEGAM2J)**  
CEGAM, DVOR/DME VFD (IAF).

**DOMINGO TWO DELTA ARRIVAL (DGO2D)**  
DVOR/DME DGO, LOPNA, VOR/DME VRA, NDB VT, DVOR/DME VFD (IAF), NDB VTA (IAF).

**PAMPLONA TWO MIKE ARRIVAL (PPN2M)**  
DVOR/DME PPN, PITUL, ARBIN, VOR/DME VRA, NDB VT, DVOR/DME VFD (IAF).

**TABANERA THREE FOXTROT ARRIVAL (NEA3F). Subject to LED10 activity**  
VOR/DME NEA, LOPNA, VOR/DME VRA, NDB VT, DVOR/DME VFD (IAF), NDB VTA (IAF).

**INTENCIONADAMENTE EN BLANCO**  
**INTENTIONALLY BLANK**