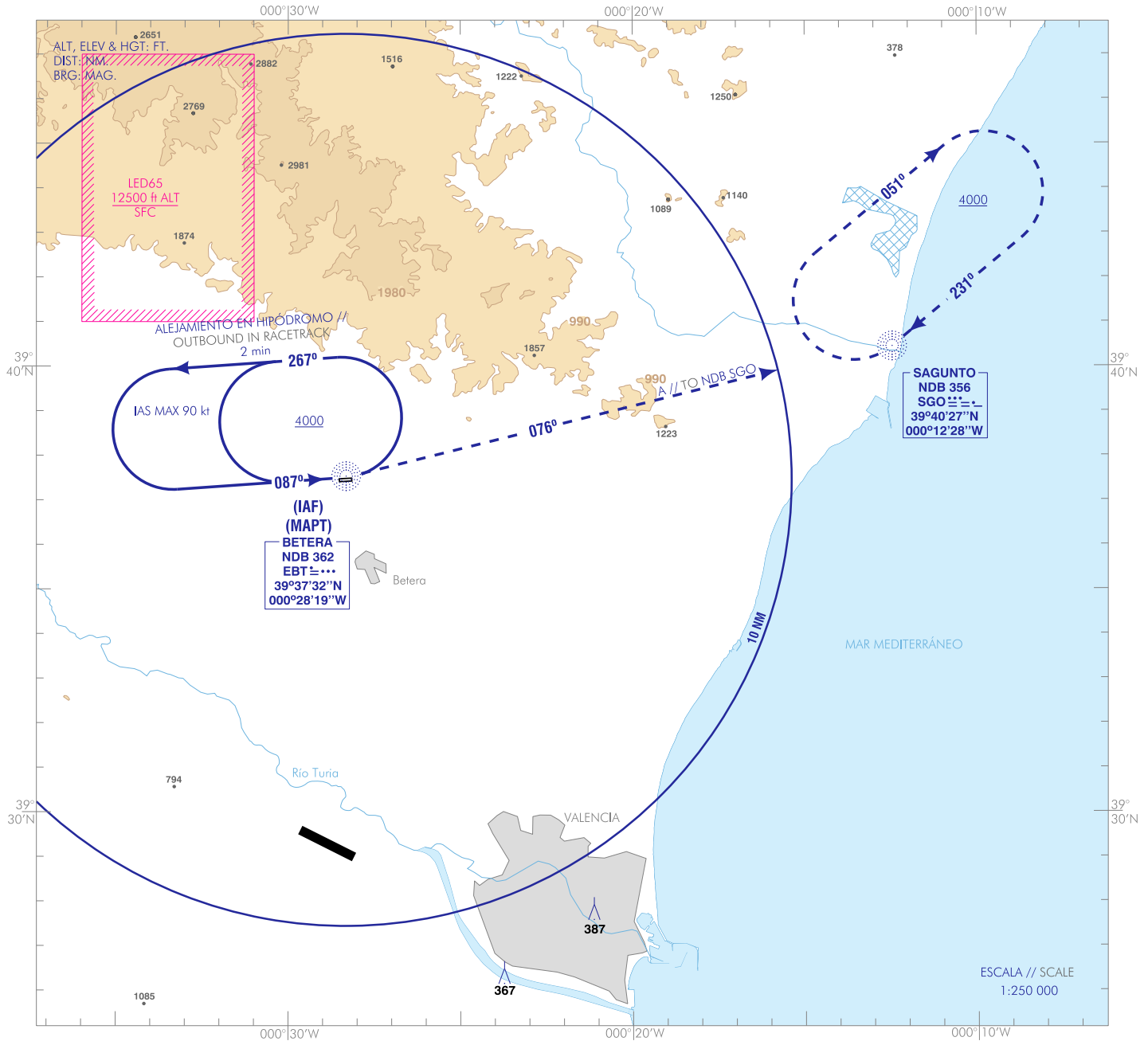


CARTA DE APROXIMACIÓN
POR INSTRUMENTOS-AATCP-1(C)

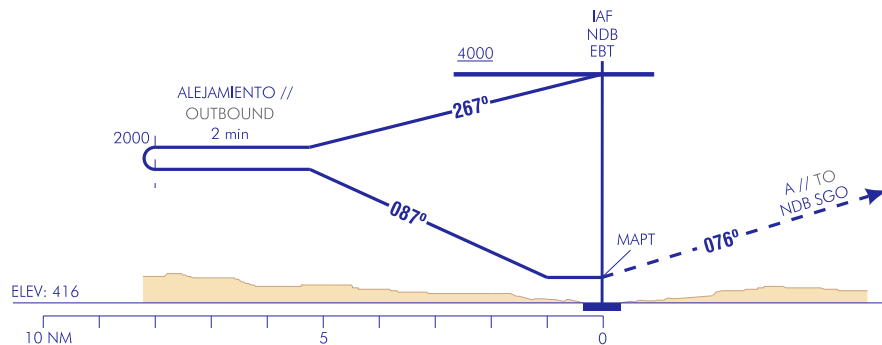
ELEV HLP
416
VAR 0°W (2015)

APP 120.100
TWR 126.750

VALENCIA/Bétera
COPTER NDB 087°



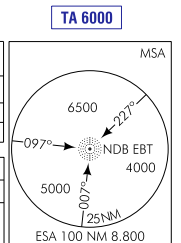
FRUSTADA: VIRAR A LA IZQUIERDA PARA SEGUIR RUMBO MAGNÉTICO 076° NDB SGO, ASCIENDIENDO A 4000 ft, INTEGRÁNDOSE EN LA ESPERA EN SGO.
MISSING APCH: TURN LEFT TO FOLLOW MAGNETIC HEADING 076° NDB SGO, CLIMBING TO 4000 ft TO INTEGRATE HOLDING PATTERN IN SGO



CAMBIOS: RETIRADA DE FREQ. GMC, IDIOMA. //
CHANGES: WITHDRAWAL OF GMC FREQ, LANGUAGE.

CATEGORÍA CATEGORY	HELICÓPTEROS HELICOPTERS	
DIRECTO DIRECT	1100/1.2	684 (700-1.2)
USO EXCLUSIVO DE AERONAVES DE ESTADO // EXCLUSIVE USE OF STATE HELICOPTERS		

GS	kt	80	100	120	140	160	180
FAF-THR:	min:s						
FAF-MAPT:	min:s						
ROD:	ft/min						
ALT/HGT DME () FNA							
13 DME	12 DME	11 DME	10 DME	9 DME	8 DME	7 DME	6 DME
5 DME	4 DME	3 DME	2 DME	1 DME			



INTENCIONADAMENTE EN BLANCO
INTENTIONALLY BLANK