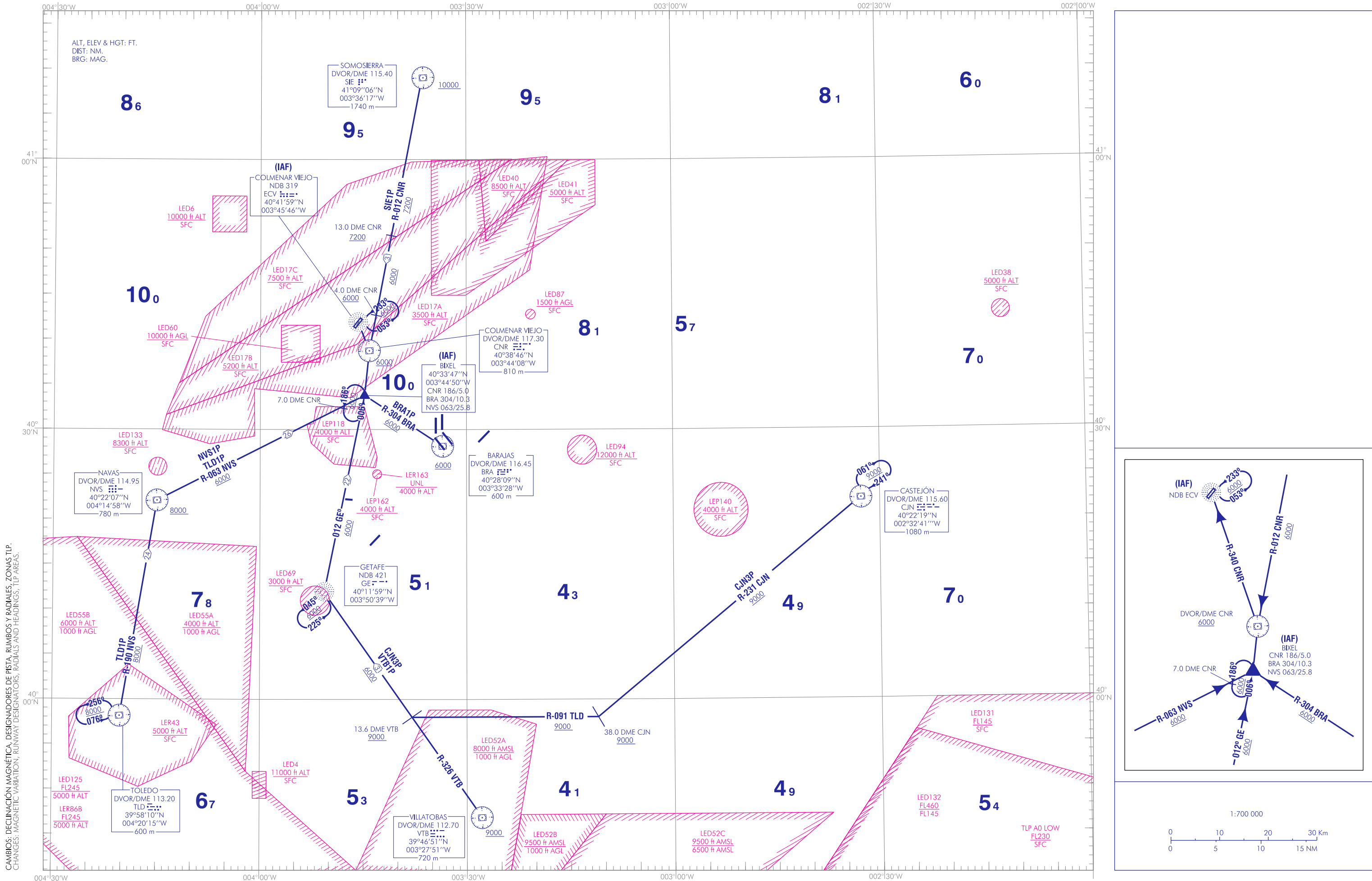


CARTA DE LLEGADA
VUELO POR INSTRUMENTOS -MIPS
LEMD CONFIGURACIÓN SUR

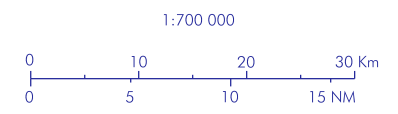
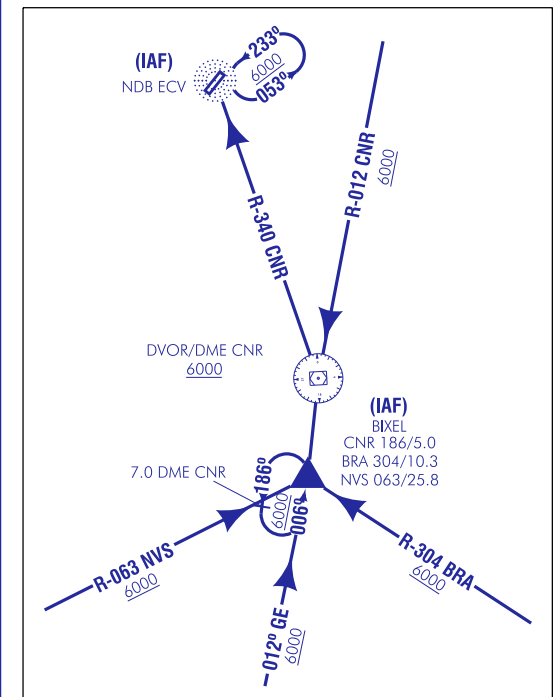
TA 13000
VAR 0° (2020)

APP 118.400
128.700
124.230 C
TWR 123.225

MADRID/Colmenar Viejo
RWY 03/21
BRA1P CJN3P
NVS1P SIE1P
TLD1P VTB1P



CAMBIOS: DECLINACIÓN MAGNÉTICA, DESIGNADORES DE PISTA, RUMBOS Y RADIALES, ZONAS TLP.
CHANGES: MAGNETIC VARIATION, RUNWAY DESIGNATORS, RADIALS AND HEADINGS, TLP AREAS.



INTENCIONADAMENTE EN BLANCO
INTENTIONALLY BLANK