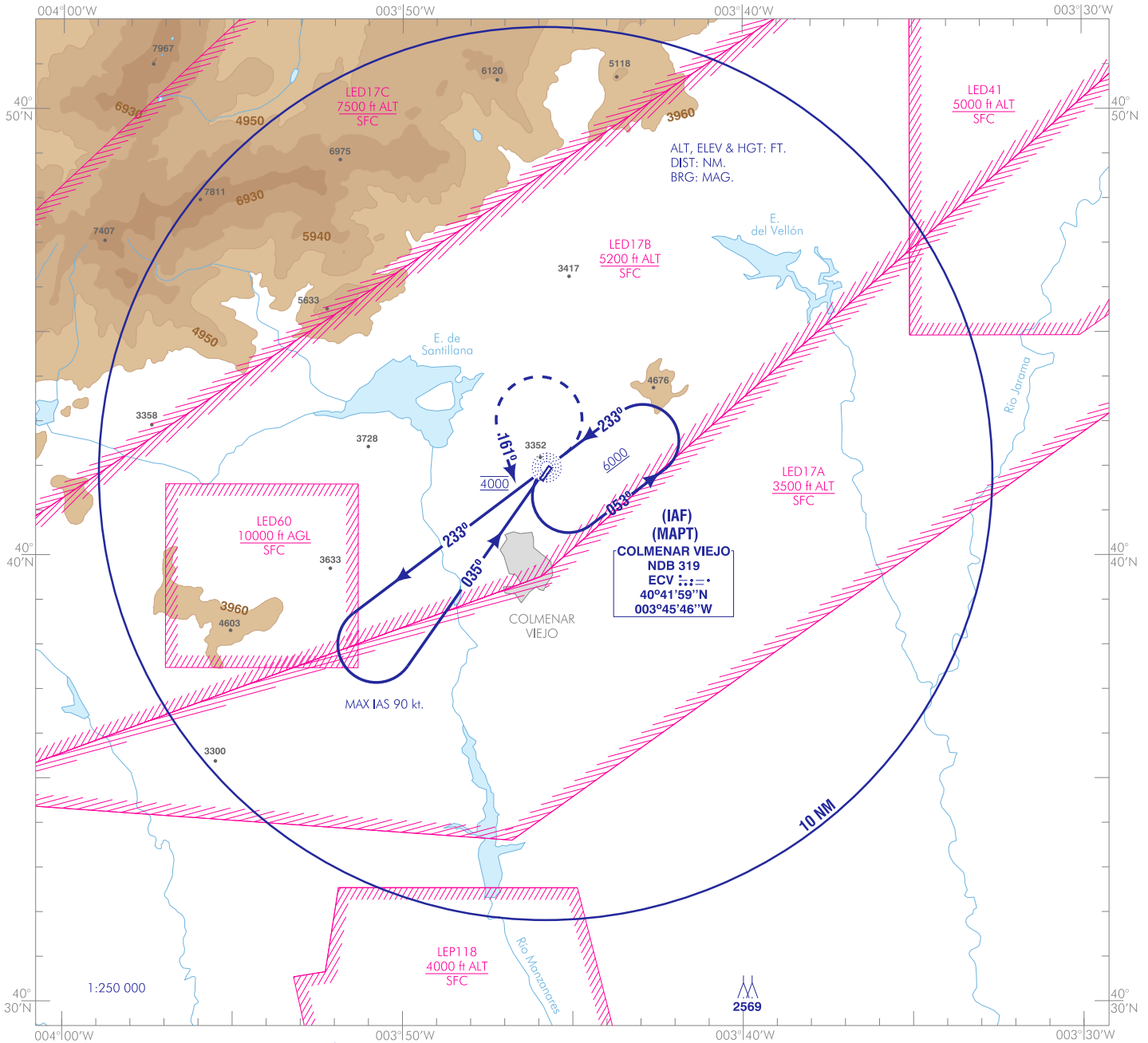


CARTA DE APROXIMACIÓN
POR INSTRUMENTOS-MIPS

ELEV HLP
3266
VAR 0° (2020)

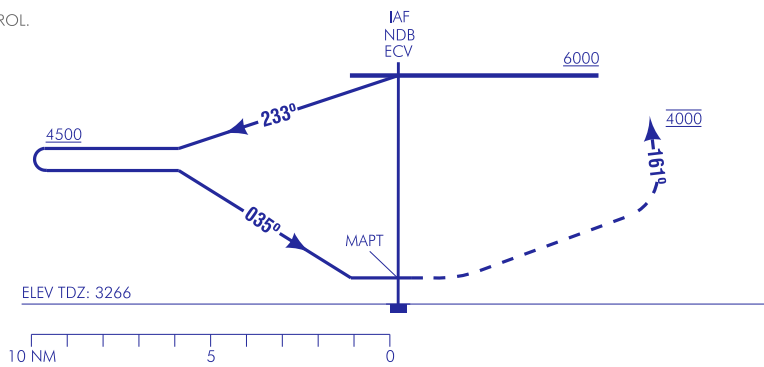
APP 118.400
128.700
124.230 C
TWR 123.225

MADRID/Colmenar Viejo
COPTER NDB 035°



FRUSTRADA: VIRAR A LA IZQUIERDA A RUMBO MAGNÉTICO 161°, ASCIENDIENDO A 4000.
MISSED APCH: TURN LEFT TO MAGNETIC HEADING 161°, CLIMBING TO 4000.

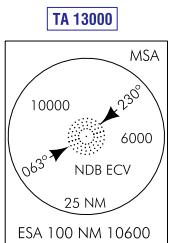
NOTAS:
- COORDINAR CON CONTROL MADRID.
NOTES:
- COORDINATE WITH MADRID CONTROL.



CAMBIOS: DECLINACIÓN MAGNÉTICA, RUMBOS.
CHANGES: MAGNETIC VARIATION, HEADINGS.

CAT	HEL
DIRECTO DIRECT	3800/0.8 530 (600-0.8)
USO EXCLUSIVO DE HELICÓPTEROS DE ESTADO EXCLUSIVE USE STATE HELICOPTERS	

GS	kt	80	100	120	140	160	180
FAP-THR:	min:s						
FAF-MAPT:	min:s						
ROD:	ft/min						
ALT/HGT DME () FNA							
14	13	12	11	10	9	8	7
6	5	4	3	2			



INTENCIONADAMENTE EN BLANCO
INTENTIONALLY BLANK