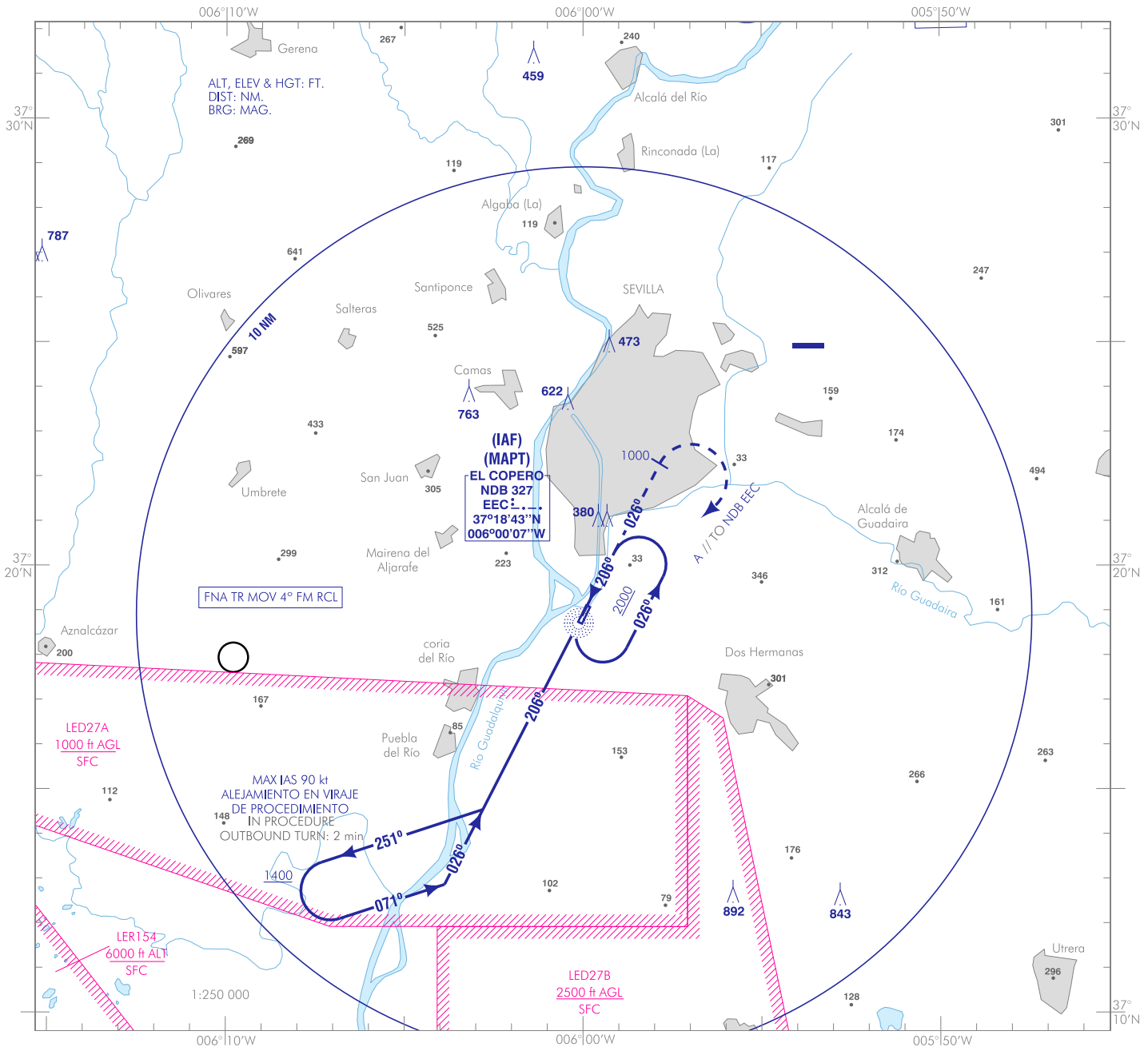


CARTA DE APROXIMACIÓN
POR INSTRUMENTOS-MIPS

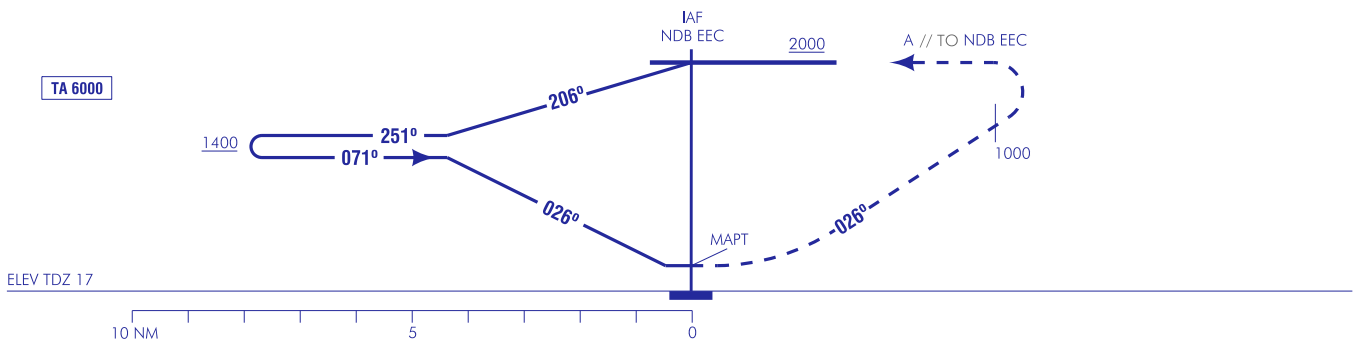
ELEV HLP
17
VAR 1°W (2020)

APP 120.800
TWR 126.750

SEVILLA/El Copero
COPTER NDB 026°



FRUSTRADA: ASCENDER EN RUMBO 026° HASTA 1000, VIRAR A LA DERECHA DIRECTO AL NDB EEC, PARA INTEGRARSE A LA ESPERA A 2000.
MISSED APCH: CLIMB ON HEADING 026° UP TO 1000, TURN RIGHT DIRECT TO NDB EEC, TO JOIN THE HOLDING AT 2000.

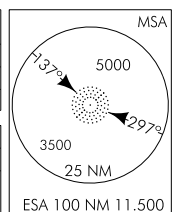


CAT	HEL
STA	640 (1.2) 620 (700-1.2)

COORDINAR CON SEVILLA APP PARA USO EXCLUSIVO DE AERONAVES DE ESTADO.
COORDINATE WITH SEVILLA APP FOR EXCLUSIVE USE OF STATE AIRCRAFT

GS	kt	80	100	120	140	160	180
FAP-THR:	min:s						
FAF-MAPT:	min:s						
ROD:	ft/min						

ALT/HGT DME () FNA												
14	13	12	11	10	9	8	7	6	5	4	3	2



CAMBIOS: FRECUENCIA APP, SIMBOLOGÍA DE AERÓDROMO Y AD RESTRINGIDO, OBSTÁCULOS.
CHANGES: APP FREQUENCY, AERODROME AND RESTRICTED AD SYMBOLS, OBSTACLES.

INTENCIONADAMENTE EN BLANCO
INTENTIONALLY BLANK