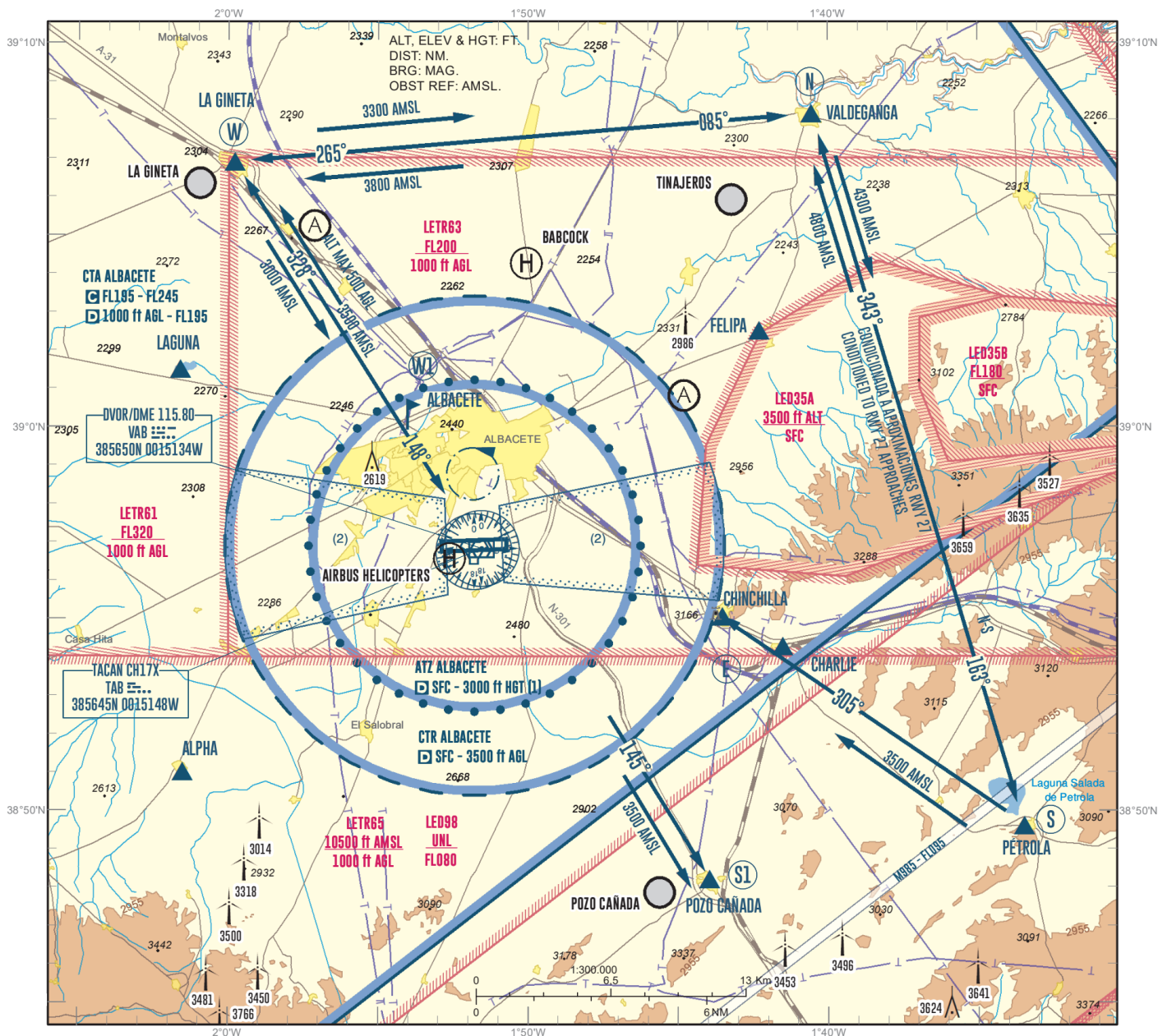


CARTA DE APROXIMACIÓN
VISUAL / VAC - OACI

ELEV AD
2301
VAR 0° (2020)

APP	118.730 C
TWR	139.305 C
GND	122.105 C
	121.805 C

ALBACETE
LEAB



NOTES

(1) Or up to the cloud ceiling, whichever is lower.

(2) Final approach area.

ARRIVALS

VFR aircraft bound for Albacete AD will establish radio contact with TWR at visual reporting points W (La Gineta), N (Valdeganga) and S (Pétrola) and will request clearance to enter the CTR, reporting their position and request for landing instructions.

The following altitudes will be maintained:

- Route W-W1: 3000 ft AMSL.
- Route N-W: 3800 ft AMSL.
- Route N-S: 4300 ft AMSL.
- Route S-E (Chinchilla): 3500 ft AMSL.

TWR may establish holdings over these points. If other instructions will not provided, aircraft will proceed to point W1 (visual reference Albacete) before obtain the corresponding clearance from TWR.

DEPARTURES

Aircraft departing Albacete AD will proceed via points W and N, maintaining the following altitudes:

- Route W1-W: 3500 ft AMSL.
- Route W-N: 3300 ft AMSL.
- Route S-N: 4800 ft AMSL.
- Route S1 (Pozo Cañada): 3500 ft AMSL.

SOUTHERN ROUTES

Arrivals and departures via points S, S1 and E will only be cleared when no jet aircraft flights are taking place, and must proceed via point W.

COMMUNICATION FAILURE

Aircraft with communication failure will enter the CTR via the point W, maintaining 500 ft AGL or below, proceeding to W1 point. From this point proceed to the established communication failure circuit.

REMARKS

See AD 2-LEAB, item 20, RESTRICTED HOURS TO VFR AIRCRAFT.

See AD 2-LEAB, item 22, for holding and landing circuits for ACFT with communication failure.

FINAL APCH AREAS shall never be crossed without permission from TWR.

PAPI (MEHT)

- RWY 09: 3.0° (48 ft).
- RWY 27: 3.0° (48 ft).

Purely for information, the geographic coordinates of the points are included:

- N: 390810N 0014033W
- W: 390654N 0015948W
- S: 384936N 0013329W
- E: 385504N 0014332W
- S1: 384813N 0014358W
- W1: 390020N 0015350W

Reporting points for military jets (See AD 2-LEAB VAC 2.2):

- ALPHA: R-233 TAB 9.5 DME TAB
- CHARLIE: R-107 TAB 8.4 DME TAB
- FELIPA: R-052 TAB 9.4 DME TAB
- LAGUNA: R-302 TAB 9.0 DME TAB