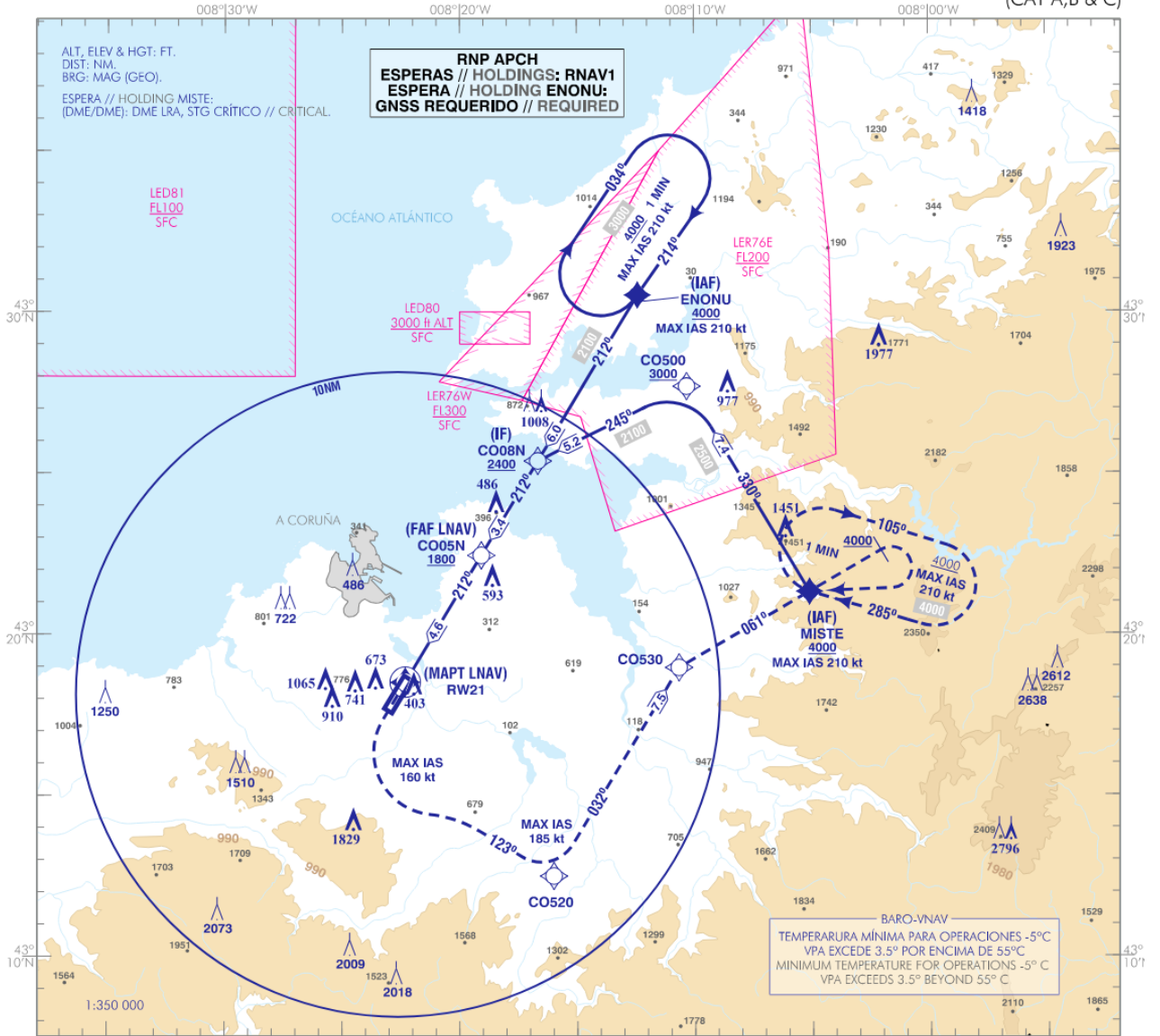


CARTA DE APROXIMACIÓN  
POR INSTRUMENTOS-OACI

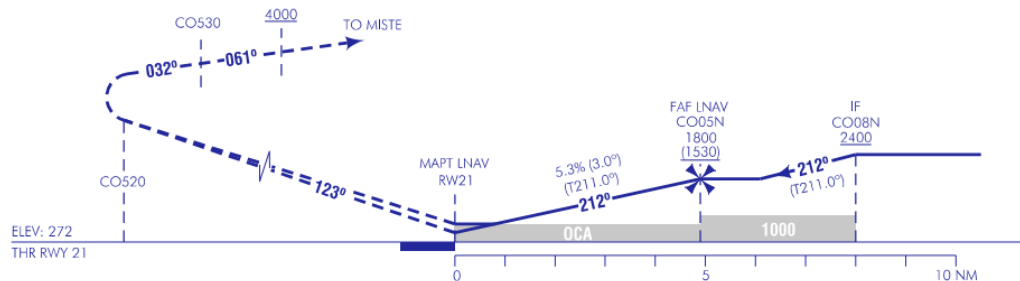
ELEV AD  
330 ft  
VAR 1°W (2025)

APP 120.200 MHz  
TWR 118.305 C  
GMC 121.705 C  
ATIS 129.005 C

**A CORUÑA**  
RNP Y  
**RWY 21**  
(CAT A,B & C)



**FRUSTRADA:** VIRAR A LA IZQUIERDA (IAS MAX 160 kt) PARA SEGUIR CURSO MAGNÉTICO 123° HASTA CO520. VIRAR A LA IZQUIERDA (IAS MAX 185 kt) A CO530. VIRAR A LA DERECHA (IAS MAX 210 kt) PARA SEGUIR CURSO MAGNÉTICO 061° HASTA ALCANZAR 4000. VIRAR A LA DERECHA DIRECTO A MISTE PARA INCORPORARSE A LA ESPERA A 4000.  
**MISSED APCH:** TURN LEFT (MAX IAS 160 kt) TO FOLLOW MAGNETIC COURSE 123° UP TO CO520. TURN LEFT (MAX IAS 185 kt) UP TO CO530. TURN RIGHT (MAX IAS 210 kt) TO FOLLOW MAGNETIC COURSE 061° UNTIL REACH 4000. TURN RIGHT DIRECT TO MISTE TO JOIN THE HOLDING AT 4000.



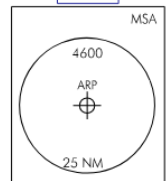
HGT REF ELEV DTHR RWY 21

| STA  | OCA/H  | A B C D    |             |             |           |
|------|--------|------------|-------------|-------------|-----------|
|      |        | 930 (660)  | 780 (510)   | 790 (520)   | 800 (530) |
| LNAV | (2.5%) | 720 (450)  | 730 (460)   | 740 (470)   |           |
|      | (4.0%) | 690 (420)  | 700 (430)   | 710 (440)   |           |
| VNAV | (5.0%) | 1230 (910) | 1380 (1060) | 2300 (1980) |           |
|      |        |            |             |             |           |

| GS        | kt     | 80  | 100 | 120 | 140 | 160 | 180 |
|-----------|--------|-----|-----|-----|-----|-----|-----|
| FAF-THR:  | mins   |     |     |     |     |     |     |
| FAF-MAPT: | mins   |     |     |     |     |     |     |
| ROD: 5.3% | ft/min | 430 | 537 | 645 | 752 | 859 |     |

| ALT/HGT RWY21 FNA |    |    |    |   |   |   |   |   |             |
|-------------------|----|----|----|---|---|---|---|---|-------------|
| 13                | 12 | 11 | 10 | 9 | 8 | 7 | 6 | 5 | 4           |
|                   |    |    |    |   |   |   |   |   | 1620 (1340) |
|                   |    |    |    |   |   |   |   |   | 1290 (1020) |
|                   |    |    |    |   |   |   |   |   | 970 (700)   |

LNAV/VNAV RDH 49  
TA 6000



CAMBIOS:  
CHANGES:

NUEVA APROXIMACIÓN  
NEW APPROACH

## REQUISITOS DE LA BASE DE DATOS AERONÁUTICA

## AERONAUTICAL DATABASE REQUIREMENTS

PROCEDIMIENTOS DE APROXIMACIÓN POR INSTRUMENTOS  
INSTRUMENT APPROACH PROCEDURES

## RNP Y (CAT A, B &amp; C) RWY 21

COORDENADAS WAYPOINTS  
WAYPOINTS COORDINATES

| WPT  | COORD                |
|--|----------------------|
| ENONU (IAF)  | 433031.0N 0081225.3W |
| CO08N (IF)   | 432522.5N 0081640.1W |
| CO05N (FAF LNAV)   | 432226.9N 0081904.8W |
| MISTE (IAF)  | 432119.3N 0080506.7W |
| CO500  | 432741.3N 0081019.6W |
| RW21 (MAPt LNAV)   | 431830.9N 0082218.8W |
| CO520  | 431230.0N 0081600.0N |
| CO530  | 431858.0N 0081040.0N |
| Aproximación Final de No Precisión (LNAV) - Pendiente (Ángulo de descenso) //<br>Non-precision final approach (LNAV) - Slope (Descent angle) | 5.31 % (3.04°)       |
| Aproximación APV Baro (LNAV/VNAV) - Pendiente (Ángulo de descenso) //<br>APV Baro approach (LNAV/VNAV) - Slope (Descent angle)               | 5.31 % (3.04°)       |

DESCRIPCIÓN TABULAR DEL PROCEDIMIENTO  
PROCEDURE TABULAR DESCRIPTION

| ENONU (IAF)     |                           |                                     |            |                       |                     |                |                     |               |                |                |                              |
|-----------------|---------------------------|-------------------------------------|------------|-----------------------|---------------------|----------------|---------------------|---------------|----------------|----------------|------------------------------|
| Número de serie | Descriptor de trayectoria | Identificador de punto de recorrido | Sobrevuelo | Curso/derrota °M (°T) | Variación magnética | Distancia (NM) | Dirección de viraje | Altitud (ft)  | Velocidad (kt) | VPA/TCH (°/ft) | Especificación de navegación |
| Serial number   | Path Terminator           | Waypoint identifier                 | Fly-over   | Course/Track °M (°T)  | Magnetic variation  | Distance (NM)  | Turn direction      | Altitude (ft) | Speed (kt)     | VPA/TCH (°/ft) | Navigation specification     |
| 001             | IF                        | ENONU                               | -          | -                     | +1.2                | -              | -                   | +4000         | -210           | -              | RNP APCH                     |
| 002             | TF                        | CO08N                               | -          | 212 (211.1)           | +1.2                | 6.0            | -                   | +2400         | -              | -              | RNP APCH                     |
| 003             | TF                        | CO05N                               | -          | 212 (211.0)           | +1.2                | 3.4            | -                   | +1800         | -              | -              | RNP APCH                     |
| 004             | TF                        | RW21                                | Y          | 212 (211.0)           | +1.2                | 4.6            | -                   | +321          | -              | -3.0/49        | RNP APCH                     |
| 005             | CF                        | CO520                               | -          | 123 (122.0)           | +1.2                | -              | -                   | -             | -160           | -              | RNP APCH                     |
| 006             | TF                        | CO530                               | -          | 032 (031.0)           | +1.2                | 7.5            | -                   | -             | -185           | -              | RNP APCH                     |
| 007             | CA                        | -                                   | -          | 061 (059.8)           | +1.2                | -              | -                   | +4000         | -              | -              | RNP APCH                     |
| 008             | DF                        | MISTE                               | -          | -                     | +1.2                | -              | R                   | @4000         | -210           | -              | RNP APCH                     |

| MISTE (IAF)     |                           |                                     |            |                       |                     |                |                     |               |                |                |                              |
|-----------------|---------------------------|-------------------------------------|------------|-----------------------|---------------------|----------------|---------------------|---------------|----------------|----------------|------------------------------|
| Número de serie | Descriptor de trayectoria | Identificador de punto de recorrido | Sobrevuelo | Curso/derrota °M (°T) | Variación magnética | Distancia (NM) | Dirección de viraje | Altitud (ft)  | Velocidad (kt) | VPA/TCH (°/ft) | Especificación de navegación |
| Serial number   | Path Terminator           | Waypoint identifier                 | Fly-over   | Course/Track °M (°T)  | Magnetic variation  | Distance (NM)  | Turn direction      | Altitude (ft) | Speed (kt)     | VPA/TCH (°/ft) | Navigation specification     |
| 001             | IF                        | MISTE                               | -          | -                     | +1.2                | -              | -                   | +4000         | -210           | -              | RNP APCH                     |
| 002             | TF                        | CO500                               | -          | 330 (329.2)           | +1.2                | 7.4            | -                   | +3000         | -              | -              | RNP APCH                     |

**MISTE (IAF)**

| Número de serie | Descriptor de trayectoria | Identificador de punto de recorrido | Sobrevuelo | Curso/derrota °M (°T) | Variación magnética | Distancia (NM) | Dirección de viraje | Altitud (ft)  | Velocidad (kt) | VPA/TCH (°/ft) | Especificación de navegación |
|-----------------|---------------------------|-------------------------------------|------------|-----------------------|---------------------|----------------|---------------------|---------------|----------------|----------------|------------------------------|
| Serial number   | Path Terminator           | Waypoint identifier                 | Fly-over   | Course/Track °M (°T)  | Magnetic variation  | Distance (NM)  | Turn direction      | Altitude (ft) | Speed (kt)     | VPA/TCH (°/ft) | Navigation specification     |
| 003             | TF                        | CO08N                               |            | 245 (243.4)           | +1.2                | 5.2            |                     | +2400         | -              |                | RNP APCH                     |
| 004             | TF                        | CO05N                               | -          | 212 (211.0)           | +1.2                | 3.4            | -                   | +1800         | -              | -              | RNP APCH                     |
| 005             | TF                        | RW21                                | Y          | 212 (211.0)           | +1.2                | 4.6            | -                   | +321          | -              | -3.0/49        | RNP APCH                     |
| 006             | CF                        | CO520                               | -          | 123 (122.0)           | +1.2                | -              | -                   | -             | -160           | -              | RNP APCH                     |
| 007             | TF                        | CO530                               | -          | 032 (031.0)           | +1.2                | 7.5            | -                   | -             | -185           |                | RNP APCH                     |
| 008             | CA                        | -                                   | -          | 061 (059.8)           | +1.2                | -              | -                   | +4000         | -              | -              | RNP APCH                     |
| 009             | DF                        | MISTE                               | -          | -                     | +1.2                |                | R                   | @4000         | -210           | -              | RNP APCH                     |

**CIRCUITOS DE ESPERA  
HOLDING PATTERN**

| Descriptor de trayectoria | Identificador de punto de recorrido | Sobrevuelo | Curso/Derrota °M (°T) | Variación magnética | Distancia/Tiempo de alejamiento | Dirección de viraje | Altitud MNM (ft)  | Altitud MAX (ft)  | Velocidad (kt) | Especificación de navegación |
|---------------------------|-------------------------------------|------------|-----------------------|---------------------|---------------------------------|---------------------|-------------------|-------------------|----------------|------------------------------|
| Path terminator           | Waypoint identifier                 | Fly-over   | Course/Track °M (°T)  | Magnetic variation  | Distance/ Outbound time         | Turn direction      | MNM altitude (ft) | MAX altitude (ft) | Speed (kt)     | Navigation specification     |
| HM                        | ENONU                               | -          | 214 (212.9)           | +1.2                | 3.8 NM                          | R                   | +4000             | -                 | -210           | RNAV1                        |
| HM                        | MISTE                               | -          | 285 (284.2)           | +1.2                | 3.8 NM                          | R                   | +4000             | -                 | -210           | RNAV1                        |