

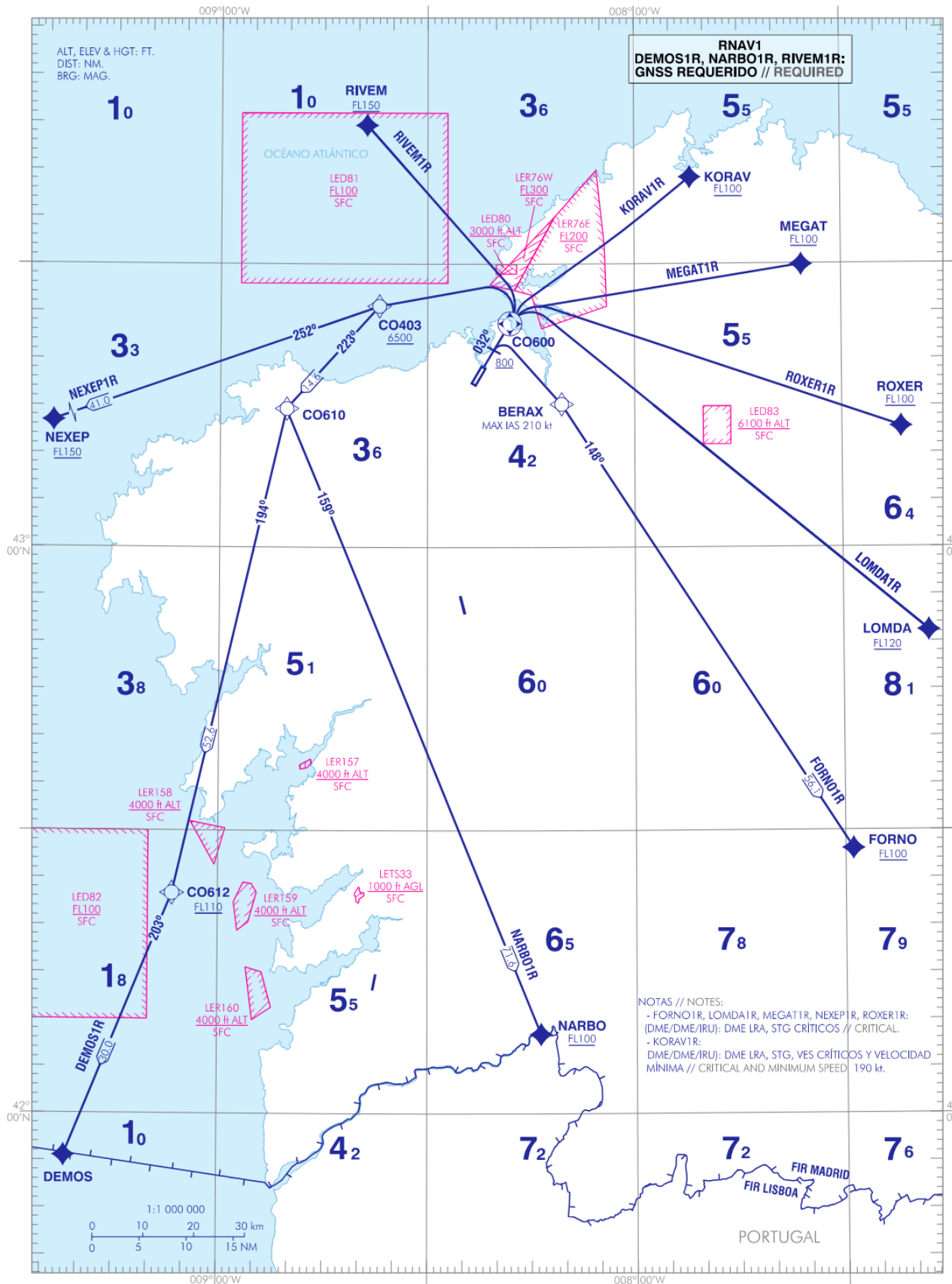
A CORUÑA
RNAV RWY 03

CARTA DE SALIDA NORMALIZADA
VUELO POR INSTRUMENTOS (SID)-OACI

TA 6000 ft
VAR 1°W (2025)

APP 120.200 MHz
TWR 118.305 C

DEMOS1R FORNO1R KORAV1R
LOMDA1R MEGAT1R NARBO1R
NEXEP1R RIVEM1R ROXER1R



NEW CHART

CHANGES:

WAYPOINTS COORDINATES

WPT	COORD
BERAX	431507.4N 0081036.0W
CO403	432529.8N 0083659.8W
CO600	432339.6N 0081804.9W
CO610	431439.0N 0085023.0W
CO612	422321.0N 0090633.0W
DEMOS	415532.5N 0092143.2W
FORNO	422805.2N 0072853.3W
KORAV	433911.2N 0075156.1W
LOMDA	425110.1N 0071745.7W
MEGAT	432955.9N 0073547.3W
NARBO	420823.3N 0081341.8W
NEXEP	431156.0N 0092959.3W
RIVEM	434439.6N 0083849.5W
ROXER	431246.8N 0072127.2W

**STANDARD INSTRUMENT DEPARTURES (SID)
RUNWAY 03**

NOTE APPLICABLE TO ALL SID:

- RNAV1 (except contingency departure).
- SPEED CONTROL:
 - MAX IAS 250 kt to FL100 or below.

CONTINGENCY DEPARTURE (ODP) LECO ONE ROMEO (LECO1R). TACTICAL USE ONLY. UNPLANNABLE.

Departing aircraft without RNAV1 operational clearance to proceed via an RNAV1-only departure routing shall notify to A Coruña TWR by voice and will be instructed to proceed in accordance with the provisions of this contingency departure.

Climb on heading runway up to 3500 ft AMSL. Turn following the ATC instructions.

Minimum climb gradient of 4.9%.

In case of communication failure, proceed according to the established in section ENR 1.8, item "Air-ground Communication Failure" in AIP-ESPAÑA.

PROCEDURE TABULAR DESCRIPTION

DEMOS1R

Minimum climb gradient of 5.0% up to CO403, due to airspace restrictions.
Subject to LED81 activity.

Serial number	Path Terminator	Waypoint identifier	Fly-over	Course/Track °M (°T)	Magnetic variation	Distance (NM)	Turn direction	Altitude (ft)	Speed (kt)	VPA/TCH (°/ft)	Navigation specification
001	CF	CO600	Y	032 (030.9)	+1.2	-	-	-	-	-	RNAV1
002	DF	CO403	-	-	+1.2	-	L	+6500	-	-	RNAV1
003	TF	CO610	-	223 (222.1)	+1.2	14.6	-	-	-	-	RNAV1
004	TF	CO612	-	194 (193.2)	+1.2	52.6	-	+FL110	-	-	RNAV1
005	TF	DEMOS	-	203 (202.2)	+1.2	30.0	-	-	-	-	RNAV1

FORNO1R

Minimum climb gradient of 3.6% up to BERAX, due to airspace restrictions.

Serial number	Path Terminator	Waypoint identifier	Fly-over	Course/Track °M (°T)	Magnetic variation	Distance (NM)	Turn direction	Altitude (ft)	Speed (kt)	VPA/TCH (°/ft)	Navigation specification
001	CA	-	-	032 (030.9)	+1.2	-	-	+800	-	-	RNAV1
002	DF	BERAX	-	-	+1.2	-	-	-	-210	-	RNAV1
003	TF	FORNO	-	148 (146.6)	+1.2	56.1	-	+FL100	-	-	RNAV1

KORAV1R

Minimum climb gradient of 5.3% up to KORAV, due to operational reasons.

Serial number	Path Terminator	Waypoint identifier	Fly-over	Course/Track °M (°T)	Magnetic variation	Distance (NM)	Turn direction	Altitude (ft)	Speed (kt)	VPA/TCH (°/ft)	Navigation specification
001	CF	CO600	Y	032 (030.9)	+1.2	-	-	-	-	-	RNAV1
002	DF	KORAV	-	-	+1.2	-	-	+FL100	-	-	RNAV1

LOMDA1R

Minimum climb gradient of 3.9% up to LOMDA, due to airspace restrictions.

Serial number	Path Terminator	Waypoint identifier	Fly-over	Course/Track °M (°T)	Magnetic variation	Distance (NM)	Turn direction	Altitude (ft)	Speed (kt)	VPA/TCH (°/ft)	Navigation specification
001	CF	CO600	Y	032 (030.9)	+1.2	-	-	-	-	-	RNAV1
002	DF	LOMDA	-	-	+1.2	-	-	+FL120	-	-	RNAV1

MEGAT1R

Minimum climb gradient of 4.5% up to MEGAT, due to operational reasons.

Serial number	Path Terminator	Waypoint identifier	Fly-over	Course/Track °M (°T)	Magnetic variation	Distance (NM)	Turn direction	Altitude (ft)	Speed (kt)	VPA/TCH (°/ft)	Navigation specification
001	CF	CO600	Y	032 (030.9)	+1.2	-	-	-	-	-	RNAV1
002	DF	MEGAT	-	-	+1.2	-	-	+FL100	-	-	RNAV1

NARBO1R

Minimum climb gradient of 5.0% up to CO403, due to airspace restrictions.

Subject to LED81 activity.

Serial number	Path Terminator	Waypoint identifier	Fly-over	Course/Track °M (°T)	Magnetic variation	Distance (NM)	Turn direction	Altitude (ft)	Speed (kt)	VPA/TCH (°/ft)	Navigation specification
001	CF	CO600	Y	032 (030.9)	+1.2	-	-	-	-	-	RNAV1
002	DF	CO403	-	-	+1.2	-	L	+6500	-	-	RNAV1
003	TF	CO610	-	223 (222.1)	+1.2	14.6	-	-	-	-	RNAV1
004	TF	NARBO	-	159 (157.6)	+1.2	71.6	-	+FL100	-	-	RNAV1

NEXEP1R

Minimum climb gradient of 5.2% up to CO403, due to airspace restrictions.

Subject to LED81 activity.

Serial number	Path Terminator	Waypoint identifier	Fly-over	Course/Track °M (°T)	Magnetic variation	Distance (NM)	Turn direction	Altitude (ft)	Speed (kt)	VPA/TCH (°/ft)	Navigation specification
001	CF	CO600	Y	032 (030.9)	+1.2	-	-	-	-	-	RNAV1
002	DF	CO403	-	-	+1.2	-	L	+6500	-	-	RNAV1
003	TF	NEXEP	-	252 (251.0)	+1.2	41.0	-	+FL150	-	-	RNAV1

RIVEM1R

Minimum climb gradient of 7.6% up to RIVEM, due to operational reasons.

Subject to LED81 activity.

Serial number	Path Terminator	Waypoint identifier	Fly-over	Course/Track °M (°T)	Magnetic variation	Distance (NM)	Turn direction	Altitude (ft)	Speed (kt)	VPA/TCH (°/ft)	Navigation specification
001	CF	CO600	Y	032 (030.9)	+1.2	-	-	-	-	-	RNAV1
002	DF	RIVEM	-	-	+1.2	-	-	+FL150	-	-	RNAV1

ROXER1R

Minimum climb gradient of 3.8% up to ROXER, due to airspace restrictions

Serial number	Path Terminator	Waypoint identifier	Fly-over	Course/Track °M (°T)	Magnetic variation	Distance (NM)	Turn direction	Altitude (ft)	Speed (kt)	VPA/TCH (°/ft)	Navigation specification
001	CF	CO600	Y	032 (030.9)	+1.2	-	-	-	-	-	RNAV1
002	DF	ROXER	-	-	+1.2	-	-	+FL100	-	-	RNAV1