

CARTA DE LLEGADA NORMALIZADA  
VUELO POR INSTRUMENTOS (STAR)-OACI

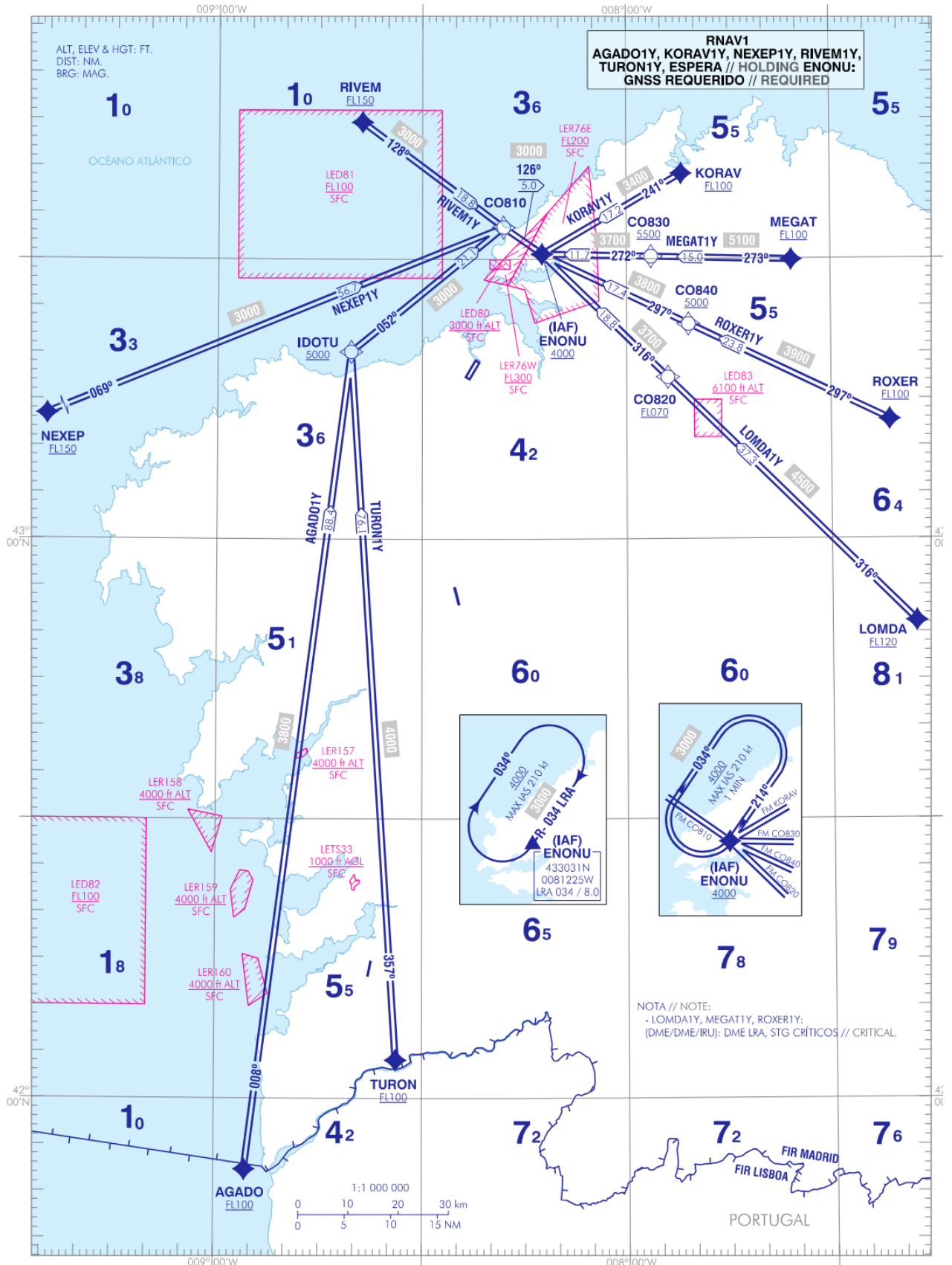
TA 6000 ft  
VAR 1°W (2025)

APP 120.200 MHz  
TWR 118.305 C

A CORUÑA

RNAV RWY 21

AGADO1Y KORAV1Y LOMDA1Y  
MEGAT1Y NEXEP1Y RIVEM1Y  
ROXER1Y TURON1Y



NEW CHART

CHANGES:

WAYPOINTS COORDINATES

WPT	COORD
AGADO	415222.4N 0085536.1W
CO810	433323.0N 0081803.0W
CO820	431721.0N 0075357.0W
CO830	433017.0N 0075623.0W
CO840	432303.0N 0075054.0W
ENONU	433031.0N 0081225.3W
IDOTU	432002.7N 0084026.6W
KORAV	433911.2N 0075156.1W
LOMDA	425110.1N 0071745.7W
MEGAT	432955.9N 0073547.3W
NEXEP	431156.0N 0092959.3W
RIVEM	434439.6N 0083849.5W
ROXER	431246.8N 0072127.2W
TURON	420404.5N 0083348.3W

STANDARD INSTRUMENT ARRIVALS (STAR)  
RUNWAY 21

NOTE APPLICABLE TO ALL STAR:

- RNAV1

PROCEDURE TABULAR DESCRIPTION

AGADO1Y

Subject to LED81 activity

Serial number	Path Terminator	Waypoint identifier	Fly-over	Course/Track °M (°T)	Magnetic variation	Distance (NM)	Turn direction	Altitude (ft)	Speed (kt)	VPA/TCH (°/ft)	Navigation specification
001	IF	AGADO	-	-	+1.2	-	-	+FL100	-	-	RNAV1
002	TF	IDOTU	-	008 (007.2)	+1.2	88.4	-	+5000	-	-	RNAV1
003	TF	CO810	-	052 (050.6)	+1.2	21.1	-	-	-	-	RNAV1
004	TF	ENONU	-	126 (125.0)	+1.2	5.0	-	+4000	-	-	RNAV1

KORAV1Y

Serial number	Path Terminator	Waypoint identifier	Fly-over	Course/Track °M (°T)	Magnetic variation	Distance (NM)	Turn direction	Altitude (ft)	Speed (kt)	VPA/TCH (°/ft)	Navigation specification
001	IF	KORAV	-	-	+1.2	-	-	+FL100	-	-	RNAV1
002	TF	ENONU	-	241 (239.9)	+1.2	17.2	-	+4000	-	-	RNAV1

LOMDA1Y

Serial number	Path Terminator	Waypoint identifier	Fly-over	Course/Track °M (°T)	Magnetic variation	Distance (NM)	Turn direction	Altitude (ft)	Speed (kt)	VPA/TCH (°/ft)	Navigation specification
001	IF	LOMDA	-	-	+1.2	-	-	+FL120	-	-	RNAV1
002	TF	CO820	-	316 (314.8)	+1.2	37.3	-	+FL070	-	-	RNAV1
003	TF	ENONU	-	316 (314.5)	+1.2	18.8	-	+4000	-	-	RNAV1

**MEGAT1Y**

Serial number	Path Terminator	Waypoint identifier	Fly-over	Course/Track °M (°T)	Magnetic variation	Distance (NM)	Turn direction	Altitude (ft)	Speed (kt)	VPA/TCH (°/ft)	Navigation specification
001	IF	MEGAT	-	-	+1.2	-	-	+FL100	-	-	RNAV1
002	TF	CO830	-	273 (271.5)	+1.2	15.0	-	+5500	-	-	RNAV1
003	TF	ENONU	-	272 (271.2)	+1.2	11.7	-	+4000	-	-	RNAV1

**NEXEP1Y**

Subject to LED81 activity.

Serial number	Path Terminator	Waypoint identifier	Fly-over	Course/Track °M (°T)	Magnetic variation	Distance (NM)	Turn direction	Altitude (ft)	Speed (kt)	VPA/TCH (°/ft)	Navigation specification
001	IF	NEXEP	-	-	+1.2	-	-	+FL150	-	-	RNAV1
002	TF	CO810	-	069 (067.4)	+1.2	56.7	-	-	-	-	RNAV1
003	TF	ENONU	-	126 (125.0)	+1.2	5.0	-	+4000	-	-	RNAV1

**RIVEM1Y**

Subject to LED81 activity.

Serial number	Path Terminator	Waypoint identifier	Fly-over	Course/Track °M (°T)	Magnetic variation	Distance (NM)	Turn direction	Altitude (ft)	Speed (kt)	VPA/TCH (°/ft)	Navigation specification
001	IF	RIVEM	-	-	+1.2	-	-	+FL150	-	-	RNAV1
002	TF	CO810	-	128 (126.7)	+1.2	18.8	-	-	-	-	RNAV1
003	TF	ENONU	-	126 (125.0)	+1.2	5.0	-	+4000	-	-	RNAV1

**ROXER1Y**

Serial number	Path Terminator	Waypoint identifier	Fly-over	Course/Track °M (°T)	Magnetic variation	Distance (NM)	Turn direction	Altitude (ft)	Speed (kt)	VPA/TCH (°/ft)	Navigation specification
001	IF	ROXER	-	-	+1.2	-	-	+FL100	-	-	RNAV1
002	TF	CO840	-	297 (295.7)	+1.2	23.8	-	+5000	-	-	RNAV1
003	TF	ENONU	-	297 (295.6)	+1.2	17.4	-	+4000	-	-	RNAV1

**TURON1Y**

Subject to LED81 activity.

Serial number	Path Terminator	Waypoint identifier	Fly-over	Course/Track °M (°T)	Magnetic variation	Distance (NM)	Turn direction	Altitude (ft)	Speed (kt)	VPA/TCH (°/ft)	Navigation specification
001	IF	TURON	-	-	+1.2	-	-	+FL100	-	-	RNAV1
002	TF	IDOTU	-	357 (356.3)	+1.2	76.1	-	+5000	-	-	RNAV1
003	TF	CO810	-	052 (050.6)	+1.2	21.1	-	-	-	-	RNAV1
004	TF	ENONU	-	126 (125.0)	+1.2	5.0	-	+4000	-	-	RNAV1

**HOLDING PATTERN**

Path terminator	Waypoint identifier	Fly-over	Course/Track °M (°T)	Magnetic variation	Distance/ Outbound time	Turn direction	MNM altitude (ft)	MAX altitude (ft)	Speed (kt)	Navigation specification
HM	ENONU	-	214 (212.9)	+1.2	3.8 NM	R	4000	-	-210	RNAV1