

ESPAÑA

AIP-ESPAÑA

AIS-ESPAÑA

Dirección AFTN: LEANZXTA

Teléfono: +34 913 213 363

E-mail: ais@enaire.es

Web: www.enaire.es

ENAIRE
DIVISIÓN DE INFORMACIÓN AERONÁUTICA
c/ Campezo, 1. EDIFICIO 2
Kudos Innovation Campus Las Mercedes
28022 Madrid (ESPAÑA)

SUP 23/26

19-FEB-26

AD

CANCEL: SUP 06/26

SUP 23/26

19FEB26/19FEB27EST

NOTE: EST SUP will only be cancelled by NOTAM, SUP or AIP amendment.

ALICANTE/Alicante-Elche Miguel Hernández AD (LEAL).- Taxiway pavement rehabilitation parallel to the runway.

Until 19 February 2027 (estimated), pavement resurfacing works will be carried out on sections of the taxiway parallel to the runway.

The works will be executed in nine phases, with the areas affected in each phase shown in this document. The phases do not necessarily have to be executed in the order indicated.

Specific start and end dates and times for each phase will be published via the corresponding NOTAM. All work areas will be duly marked and lighted. Caution is advised due to the presence of personnel and machinery.

No works will be carried out when LVP are in force.

Helicopter operations during the activation periods of each phase may be affected by the closure of certain taxiways; therefore, aircraft access to and from the runway and taxiing will follow ATC instructions at all times.

During the activation of any phase, operations by aircraft with code letter E and F will not be permitted.

The following periods of operational schedules are established:

- Schedule X: High operational impact.
- Schedule Y: Moderate operational impact.
- Schedule Z: Low operational impact.

Specific schedules will be published via NOTAM.

PHASE 1: Closure of TWY C3–C4–C5–C6

DESCRIPTION OF WORKS:

- Pavement, lighting and markings works will be carried out on TWY C3.

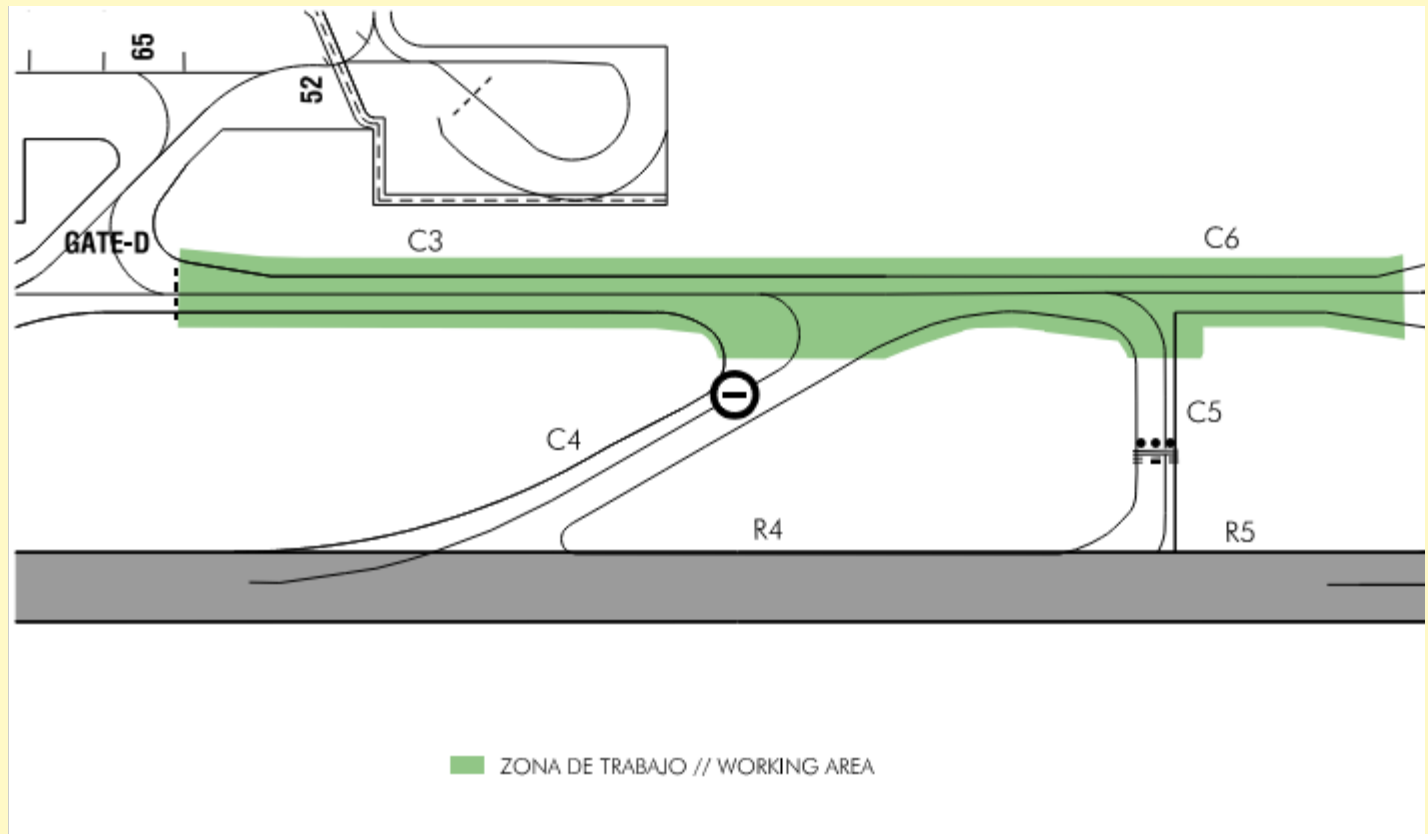
OPERATIONAL IMPACTS:

Schedule X:

No operational restrictions.

Schedule Y:

Closure of TWY C3, C4, C5 and C6.



AIRCRAFT TAXIING:

Landing on RWY 10: Vacate the runway via TWY C2 to the apron or via C7; runway entry via TWY C9. Taxi via the runway and exit to the apron via TWY A2. Marshaller guidance provided.

Departure from RWY 28: Enter the runway via TWY A4, A5 or A6; taxi via the runway and vacate via TWY C7, then enter for departure via TWY C9. Marshaller guidance provided.

Schedule Z:

RUNWAY CLOSED.

PHASE 2: Closure of TWY C1–C2–C3 and GATE D

DESCRIPTION OF WORKS:

- Pavement, lighting and markings works will be carried out on TWY C1 at its intersection with GATE D.

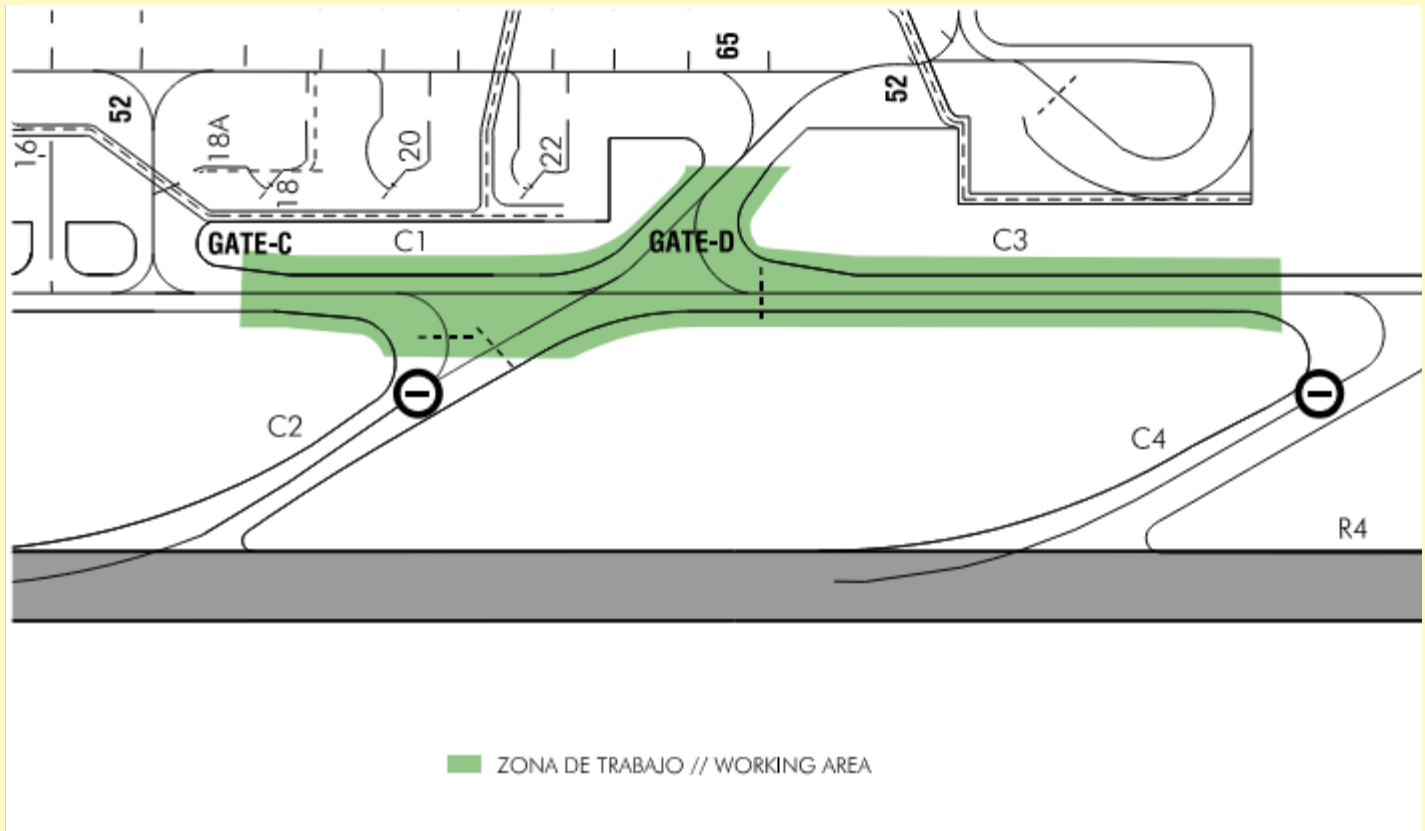
OPERATIONAL IMPACTS:

Schedule X:

No operational restrictions.

Schedule Y:

Closure of TWY C1, C2, C3 and GATE D.



AFFECTING AIRCRAFT TAXIING:

Landing on RWY 10: Vacate the runway via TWY C4, C5 or C7; enter the runway via TWY C9 as required. Taxi via the runway and exit to the apron via TWY A2. Marshaller guidance provided.

Departure from RWY 28: Enter the runway via TWY A4, A5 or A6; taxi via the runway and vacate via TWY C4. Enter for departure via TWY C5, C7, C8 or C9. Marshaller guidance provided.

Schedule Z:

RUNWAY CLOSED.

PHASE 3: Closure of TWY C1 and GATE C

DESCRIPTION OF WORKS:

- Pavement, lighting and markings works will be carried out on TWY C1 and GATE C.

OPERATIONAL IMPACTS:

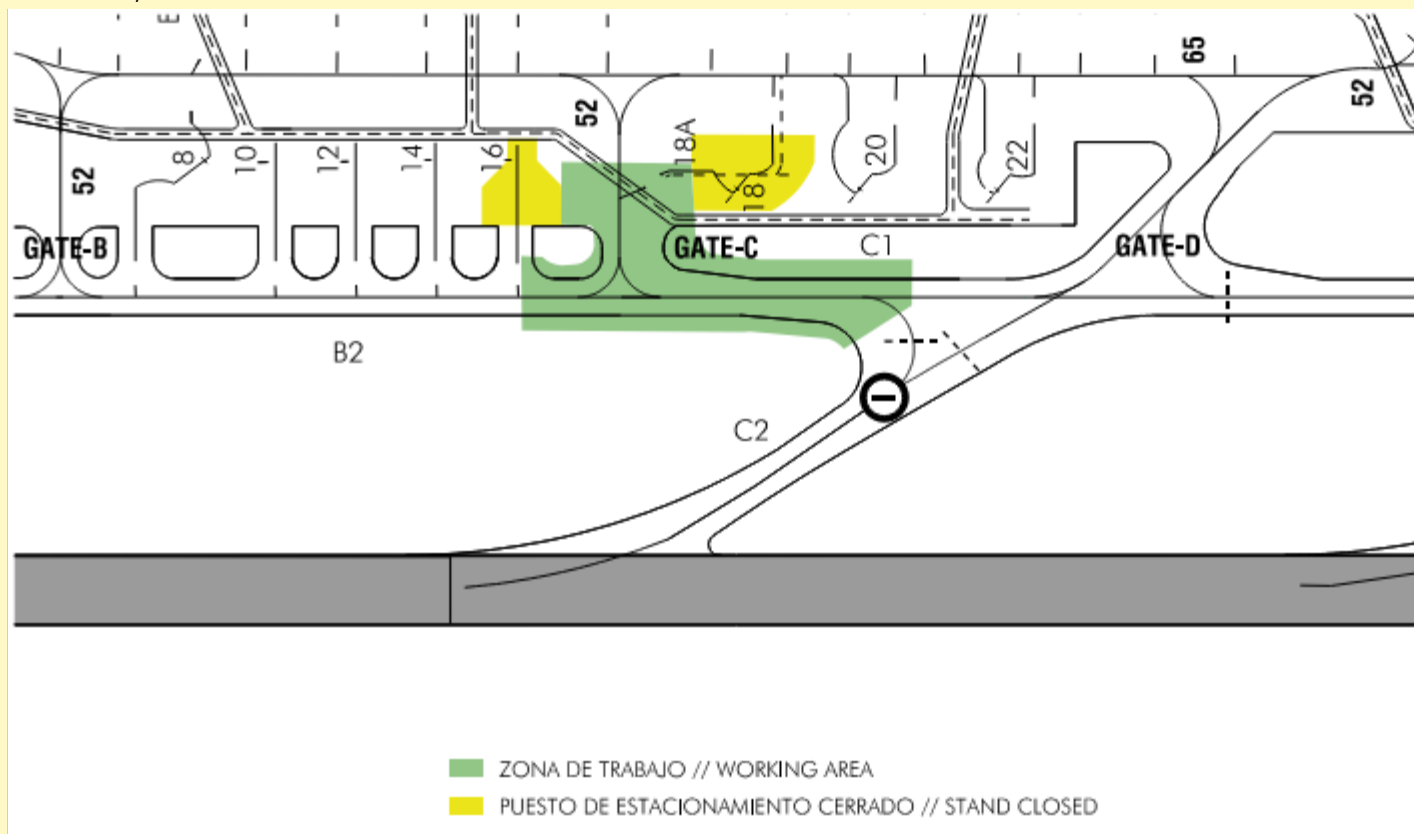
Schedule X:

No operational restrictions.

Schedule Y:

Closure of TWY C1 and GATE C.

PRKG 16, 18 and 18A out of service.



AIRCRAFT TAXIING:

Closure of TWY C1 and GATE C. Alternative taxiing via inner apron taxi lane.

Schedule Z:

RUNWAY CLOSED.

PHASE 4: Closure of TWY B2

DESCRIPTION OF WORKS:

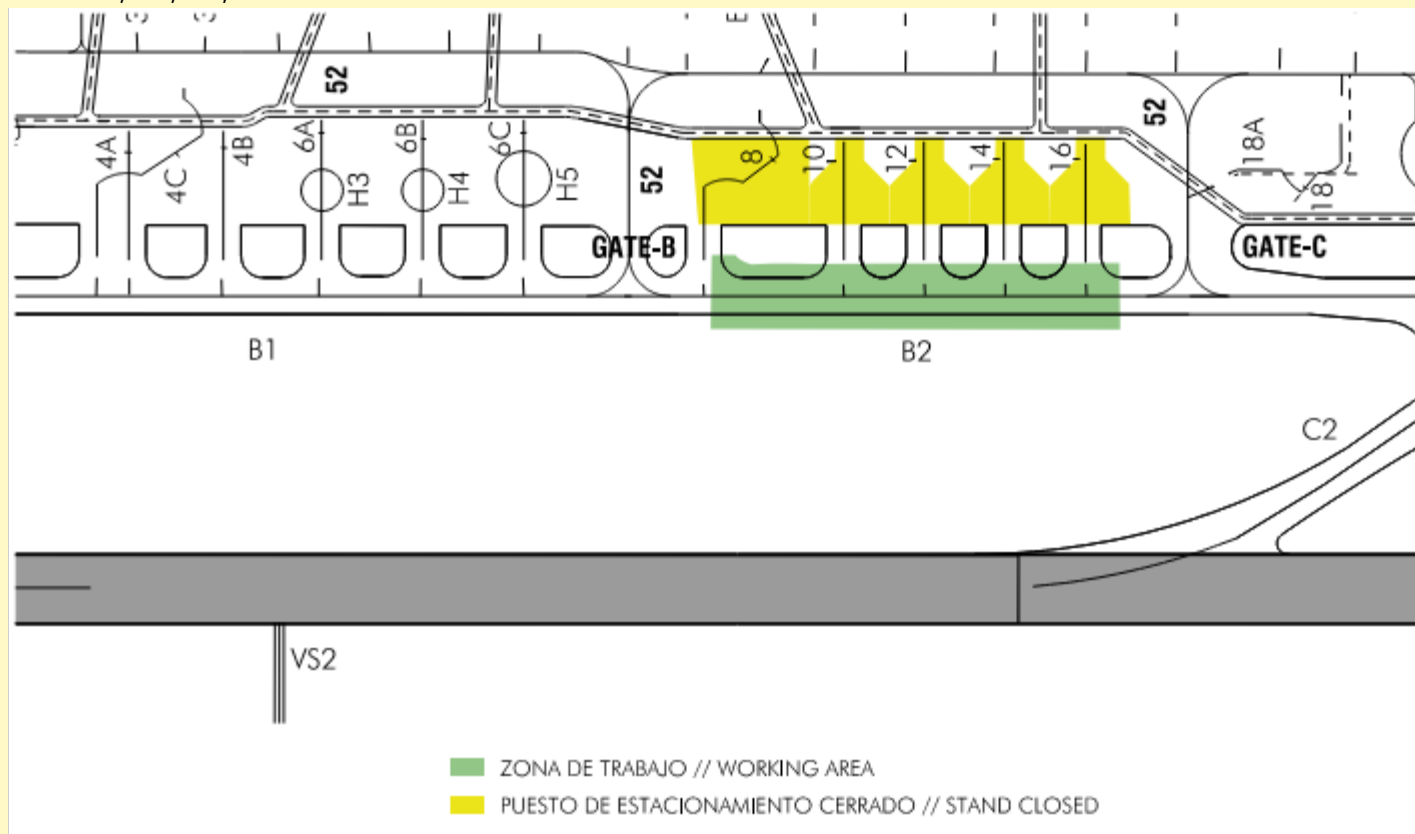
- Pavement, lighting and markings works will be carried out on TWY B2.

OPERATIONAL IMPACTS:

Schedule H24:

Closure of TWY B2.

PRKG 8, 10, 12, 14 and 16 out of service.



IMPACTS ON AIRCRAFT TAXIING:

Closure of TWY B2. Alternative taxiing via inner apron taxi lane.

Schedule Z:

RUNWAY CLOSED.

PHASE 5: Closure of GATE B

DESCRIPTION OF WORKS:

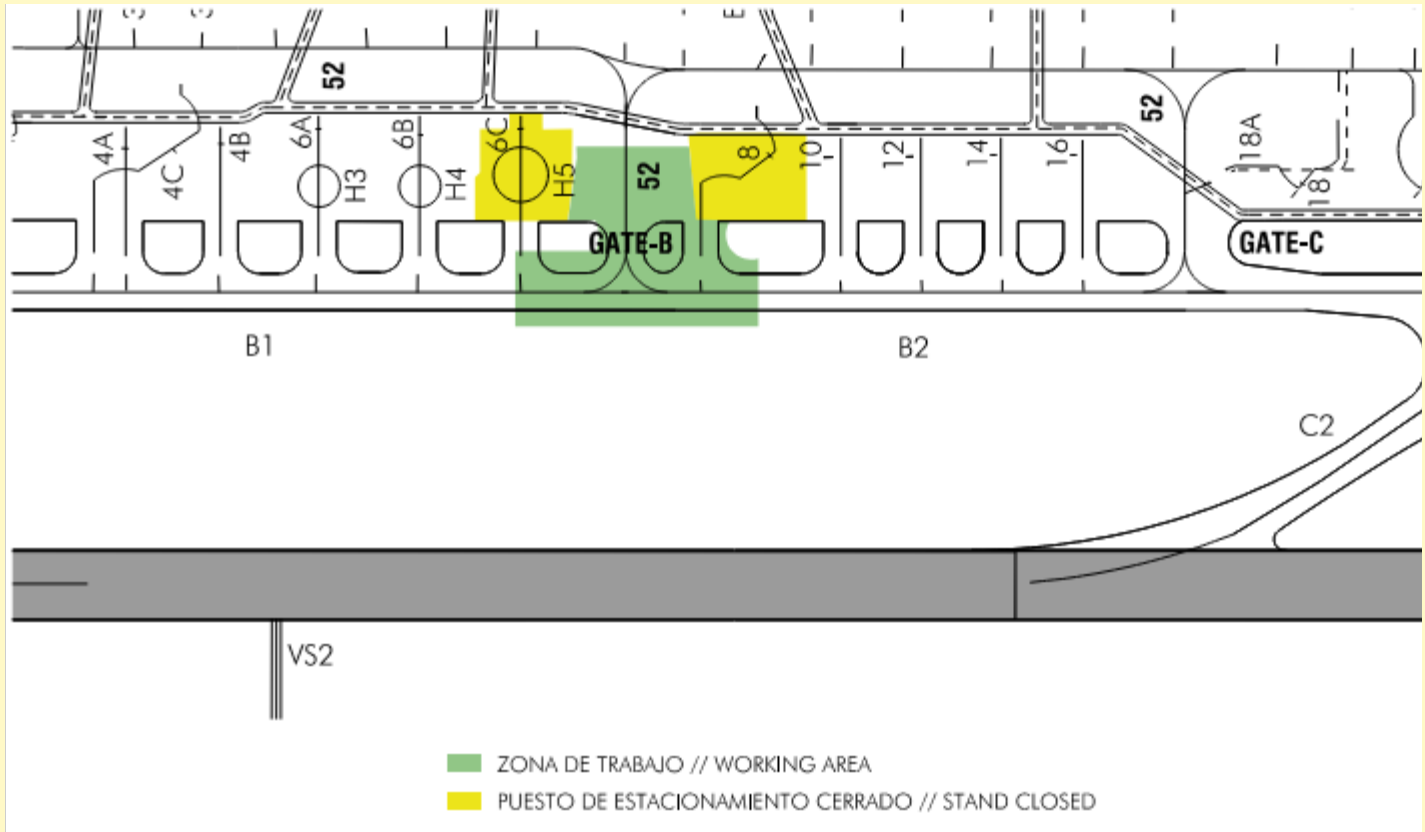
- Pavement, lighting and markings works will be carried out at GATE B.

OPERATIONAL IMPACTS:

Schedule H24:

Closure of GATE B.

PRKG 6C/H5 and 8 out of service.



IMPACTS ON AIRCRAFT TAXIING:

Closure of GATE B. Alternative taxiing via inner apron taxi lane.

Schedule Z:

RUNWAY CLOSED.

PHASE 6: Closure of TWY B1

DESCRIPTION OF WORKS:

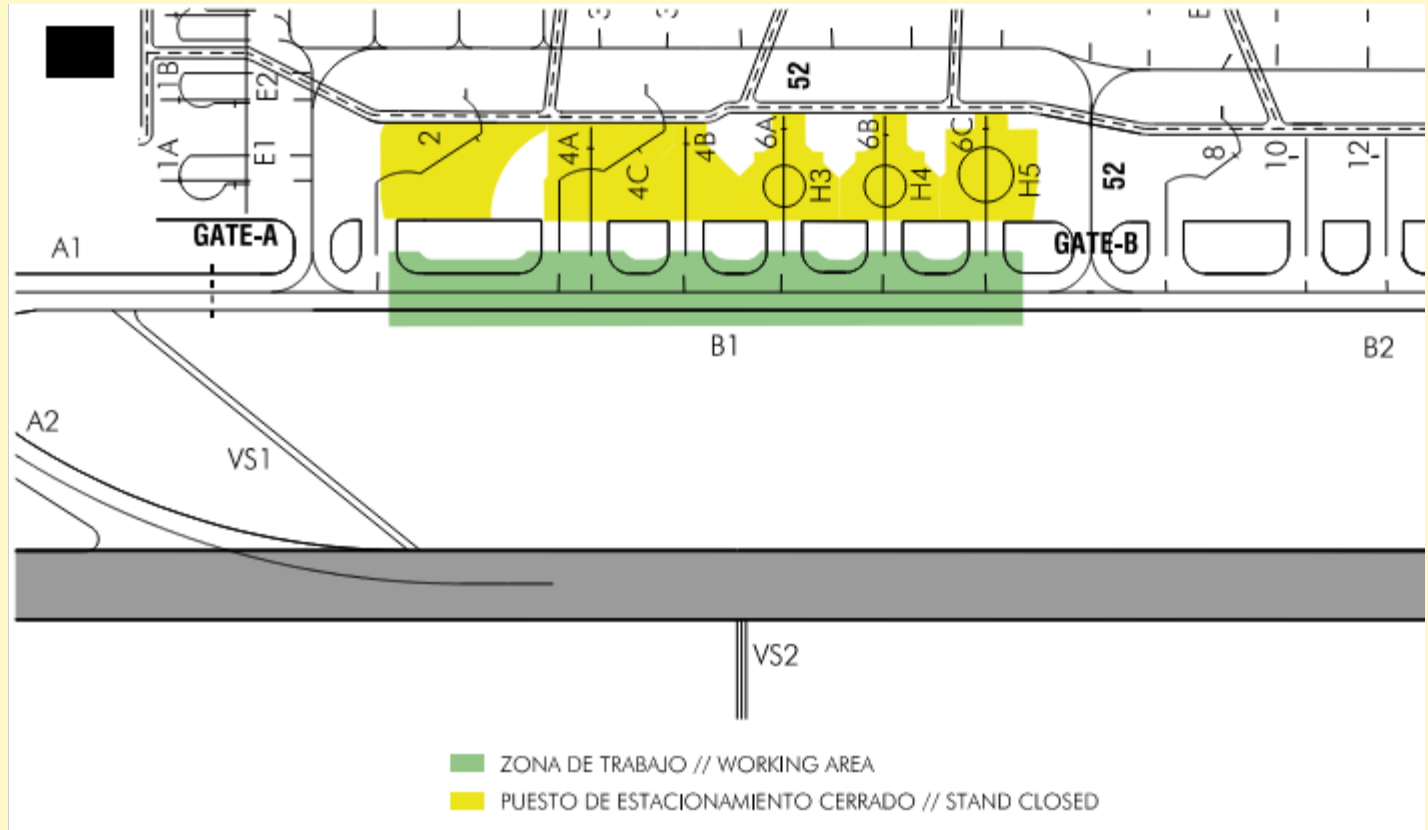
- Pavement, lighting and markings works will be carried out on TWY B1.

OPERATIONAL IMPACTS:

Schedule H24:

Closure of TWY B1.

PRKG 2, 4A/4C, 4B, 6A/H3, 6B/H4 and 6C/H5 out of service.



IMPACTS ON AIRCRAFT TAXIING:

Closure of TWY B1. Alternative taxiing via inner apron taxi lane.

Schedule Z:

RUNWAY CLOSED.

PHASE 7: Closure of TWY A1 and GATE A

DESCRIPTION OF WORKS:

- Pavement, lighting and markings works will be carried out at GATE A.

OPERATIONAL IMPACTS:

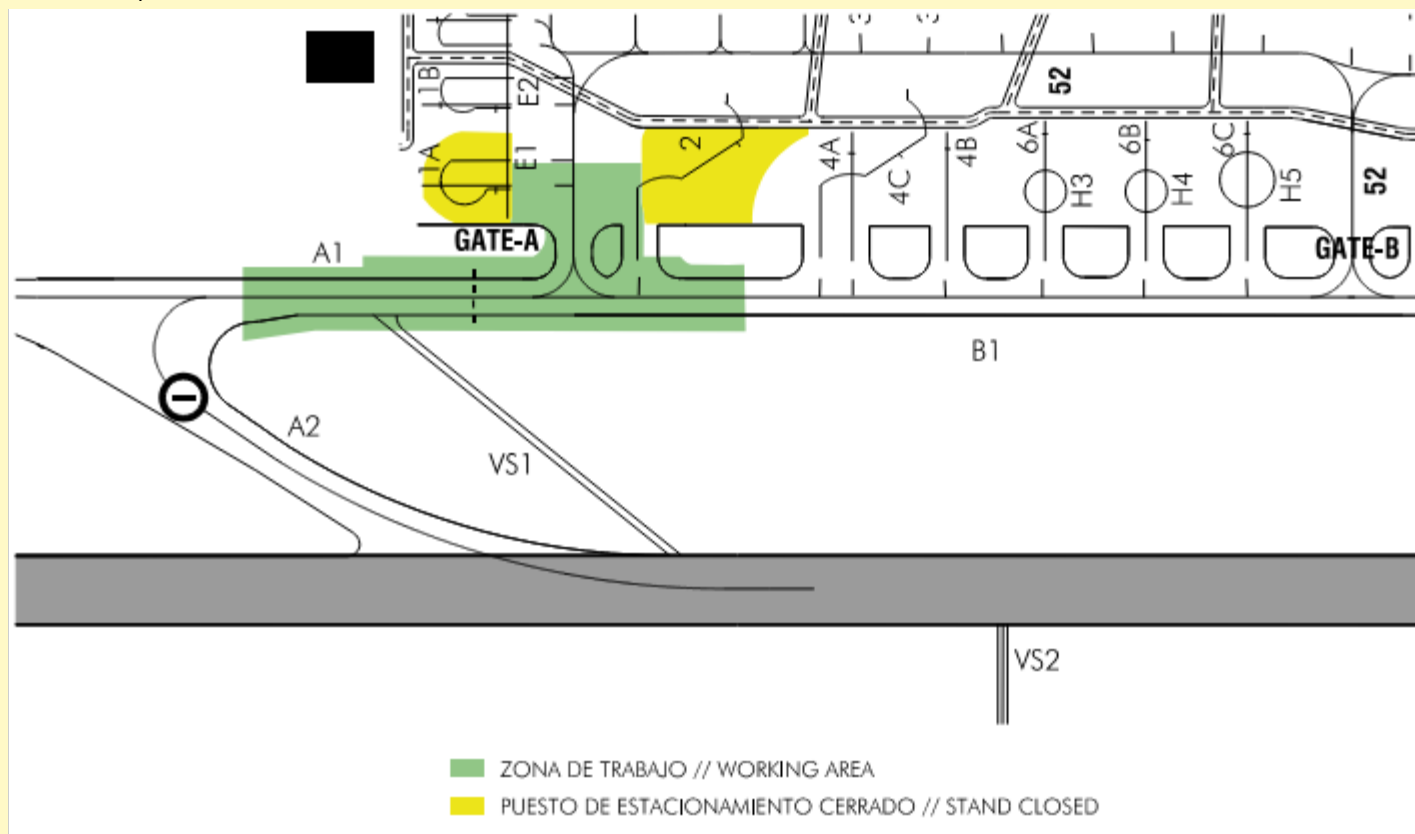
Schedule X:

No operational restrictions.

Schedule Y:

Closure of GATE A and TWY A1.

PRKG 1A/E1 and 2 out of service.



IMPACTS ON AIRCRAFT TAXIING

Departures RWY 10: Runway entry via C5, C7, C8 or C9, backtrack as required, runway exit via A2 or A6, and entry for departure via A4. Marshaller guidance provided.

Arrivals RWY 28: Runway exit via TWY A2 or A4, runway entry via TWY A6, backtrack as required, and runway exit via TWY C2 or C4 for apron access. Marshaller guidance provided.

Schedule Z:

RUNWAY CLOSED.

PHASE 8: Closure of TWY A1–A2–A3

DESCRIPTION OF WORKS:

- Pavement, lighting and markings works will be carried out on TWY A1 and A3.

OPERATIONAL IMPACTS:

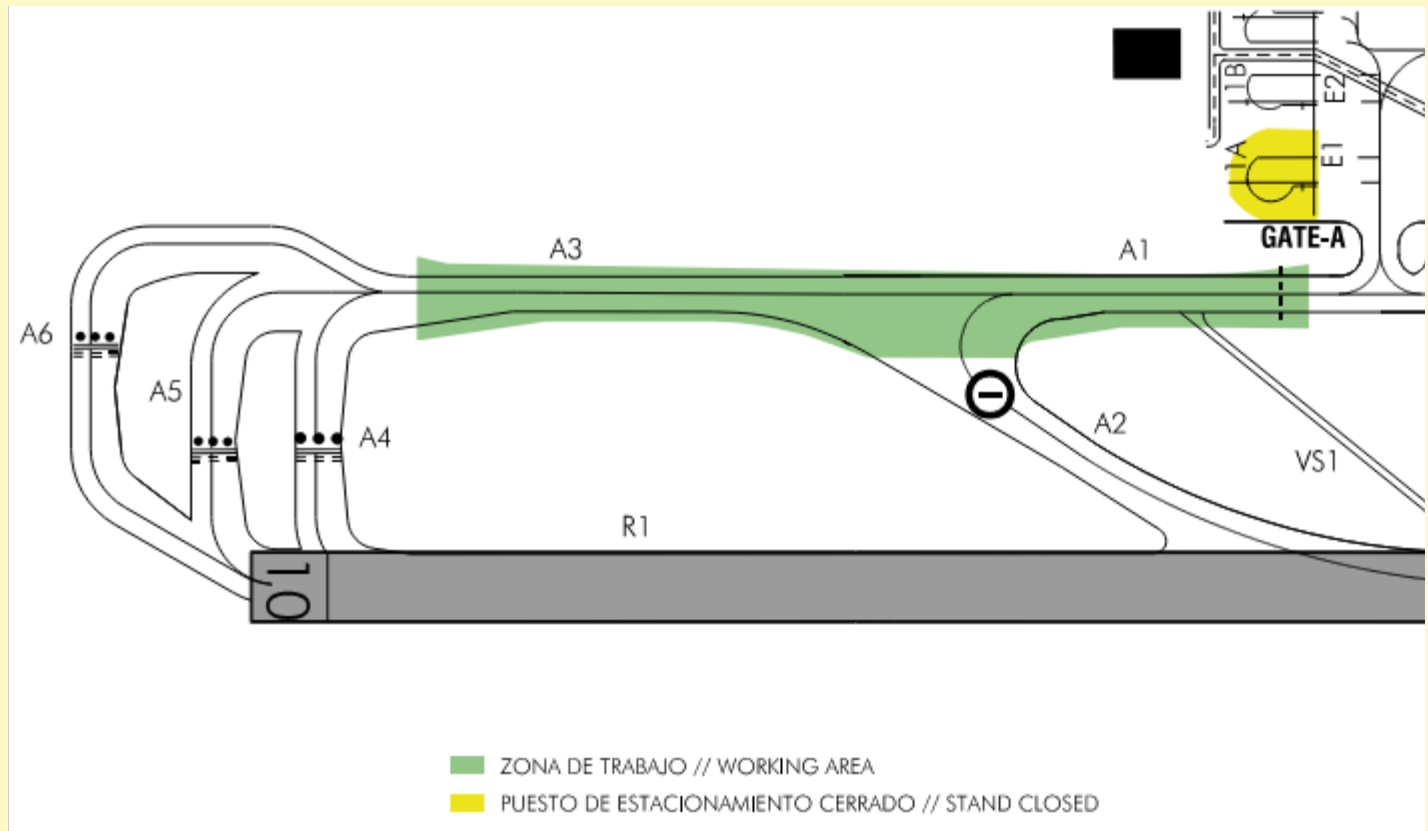
Schedule X:

No operational restrictions.

Schedule Y:

Closure of TWY A1, A2 and A3.

PRKG 1A/E1 out of service.



IMPACTS ON AIRCRAFT TAXIING:

Departures RWY 10: Runway entry via TWY C5, C7, C8 or C9, backtrack as required, runway exit via A4 and entry for departure via A6. Marshaller guidance provided.

Arrivals RWY 28: Runway exit via TWY A4, runway entry via TWY A6, backtrack as required, and runway exit via TWY C2 or C4 for apron access. Marshaller guidance provided.

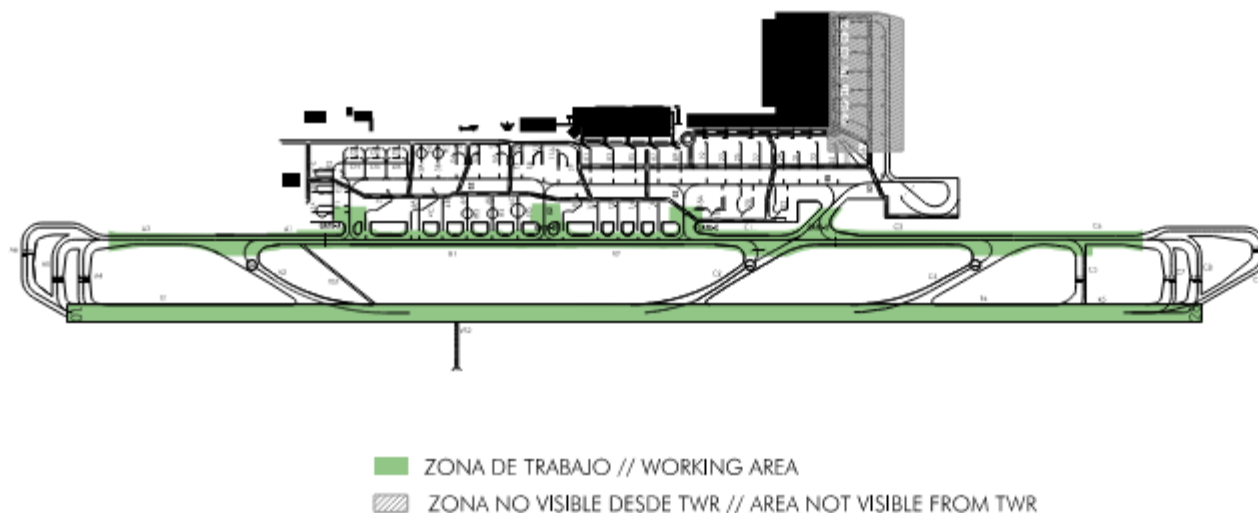
Schedule Z:

RUNWAY CLOSED.

PHASE 9: Runway Closure during Schedule Z

DESCRIPTION OF WORKS:

- Works will be carried out on the runway and on the parallel to runway taxiway.



OPERATIONAL IMPACTS:

Schedules X + Y:

No operational restrictions.

Schedule Z:

RUNWAY CLOSED.