

ESPAÑA

AIP-ESPAÑA

AIS-ESPAÑA

Dirección AFTN: LEANZXTA

Teléfono: +34 913 213 363

E-mail: ais@enaire.es

Web: www.enaire.es

ENAIRE

DIVISIÓN DE INFORMACIÓN AERONÁUTICA

c/ Campezo, 1. EDIFICIO 2

Kudos Innovation Campus Las Mercedes

28022 Madrid (ESPAÑA)

SUP 22/26

AIRAC 05-FEB-26

EFFECTIVE DATE WEF 19-MAR-26

AD

SUP 22/26

19MAR26/19MAR27EST

NOTE: EST SUP will only be cancelled by NOTAM, SUP or AIP amendment.

MADRID/Adolfo Suárez Madrid-Barajas AD (LEMD).- Resurfacing on taxiways A11 and A12.

Until 19 March 2027 (estimated), works for pavement rehabilitation will be carried out on taxiways A11 and A12.

Works will be carried out in two phases. Start and end dates, as well as any operational impact, will be published via the corresponding NOTAM.

Working areas will be properly marked with day and night lighting and will remain closed to traffic on a continuous schedule H24 .

Standard taxiing routes may be affected; therefore, ATC instructions must be followed in the vicinity of the working areas.

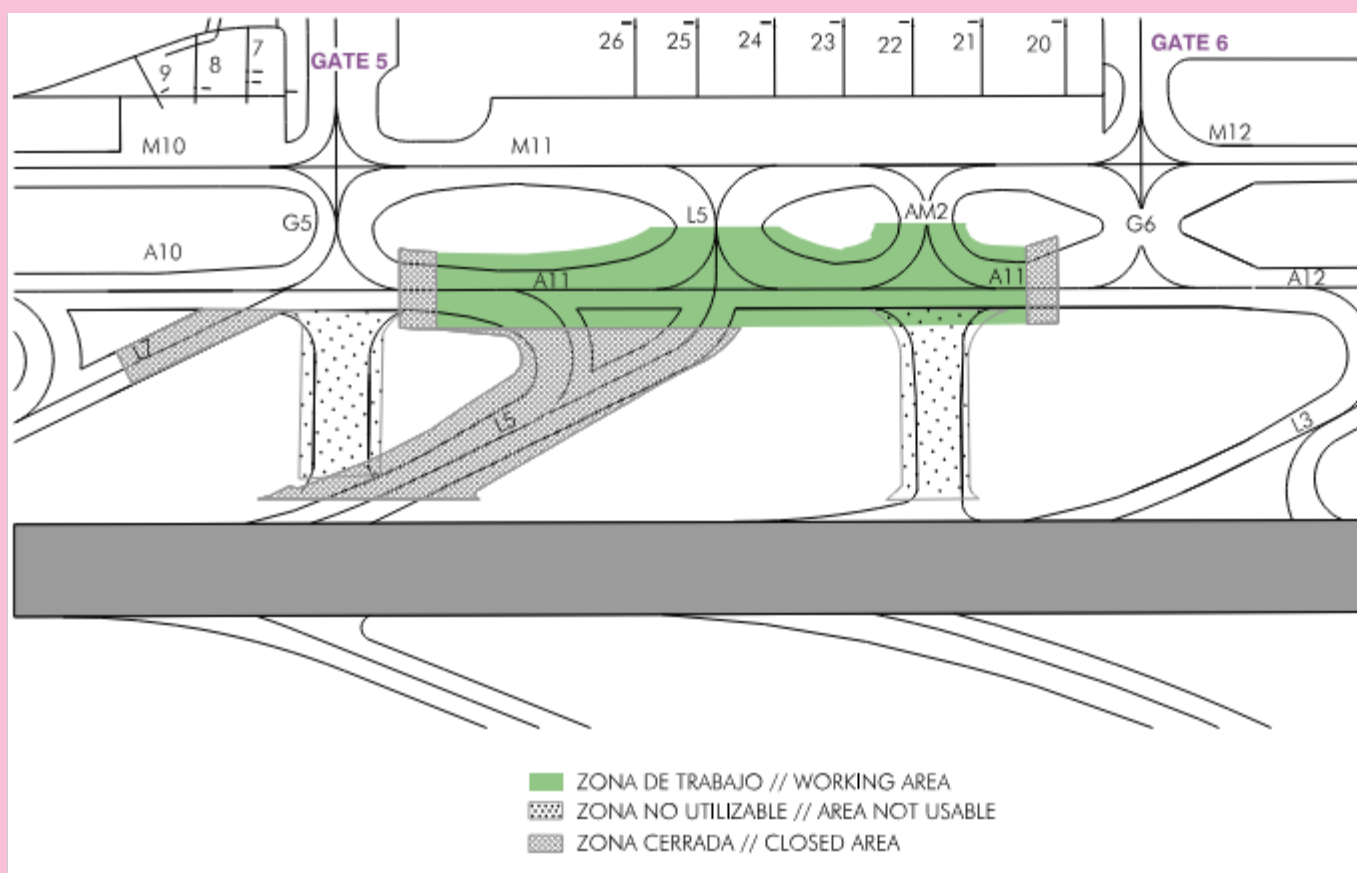
Caution is advised due to the presence of personnel and machinery. Aircraft must taxi at minimum power in diversion areas to avoid jet blast impact in zones with active personnel.

PHASE 1: WORKS ON TWY A11

Schedule: Continuous (24h).

Operational restrictions:

- TWY A11, AM2 and section of L5 between TWY A11 and M11: closed.
- RET L5 and northern branch of RET L7: closed.
- TWY M11, G5 and G6: bi-directional taxiing.
- Temporary bi-directional lights will be installed at the curves on TWY G6-M11 and TWY G5-A10.
- TWY M11: taxiing not permitted for code letter F aircraft except B748s taxiing with external engines at minimum power and with guidance by follow-me vehicle.
- Aircraft arriving on RWY 32L and headed to the terminal T-4 must exit the runway on the right or through RET L3.

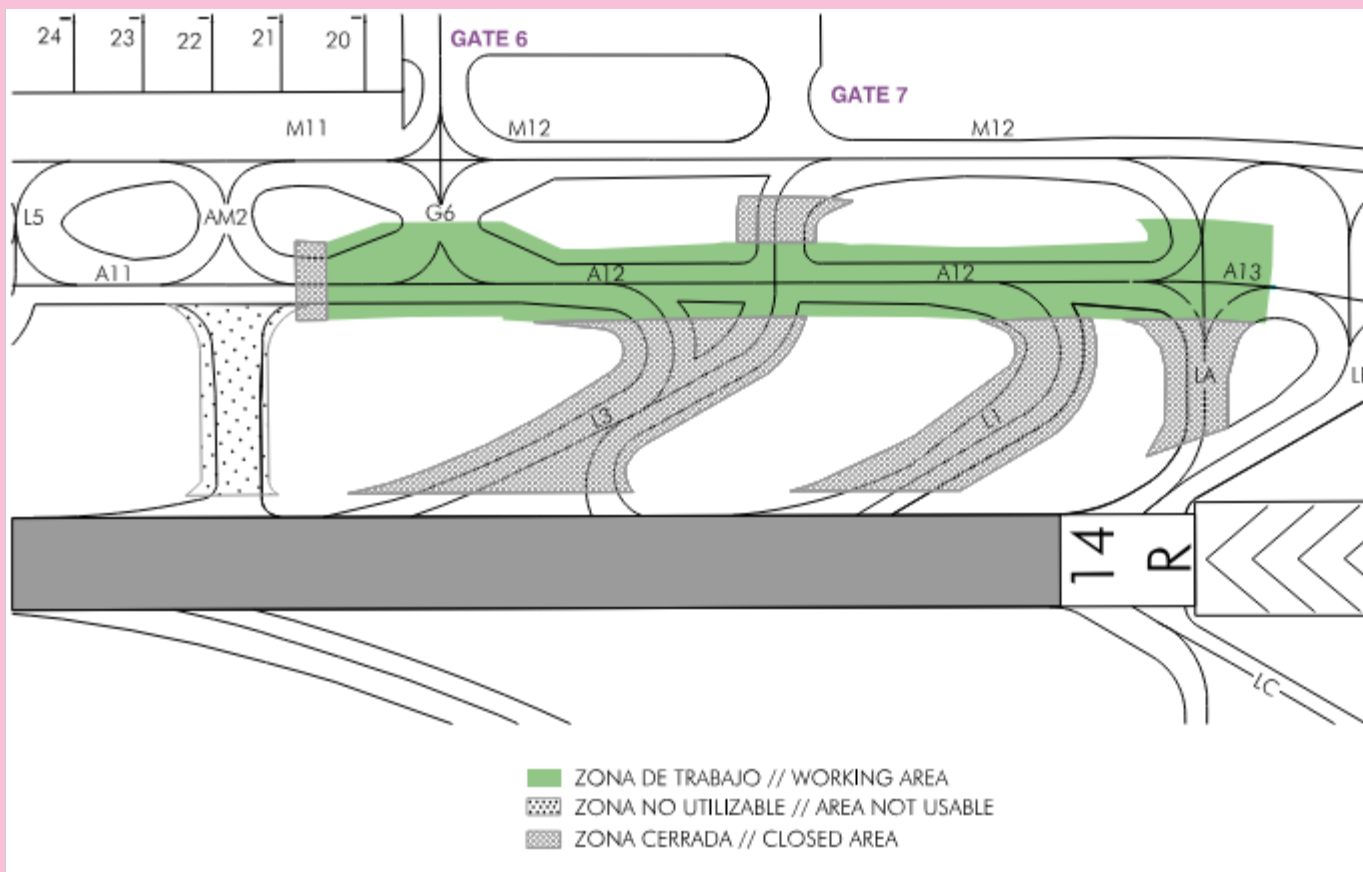


PHASE 2: WORKS ON TWY A12

Schedule: Continuous (24h).

Operational restrictions:

- TWY A12, G6, LA, L1 closed.
- RET L3: closed.
- TWY M12: considered as taxiway for access to parking stands for the duration of the works, therefore aircraft must reduce speeds to 10kt on this taxiway.
- TWY M11 (section between AM2 and G6), M12, M13 and AM2: Bi-directional taxiing.
- Temporary bi-directional lights will be installed at the curves on TWY M13-H2 and at TWY A11-AM2-M11.
- TWY M11 between G6 and L5, TWY M12 and TWY M13 between LA and LB: taxiing not permitted for code letter F aircraft except B748s taxiing with external engines at minimum power and with guidance by follow-me vehicle.
- Access to RWY 14R via TWY LB at night time or when LVP are active will require follow-me vehicle guidance.



- SUP 22/26 -