

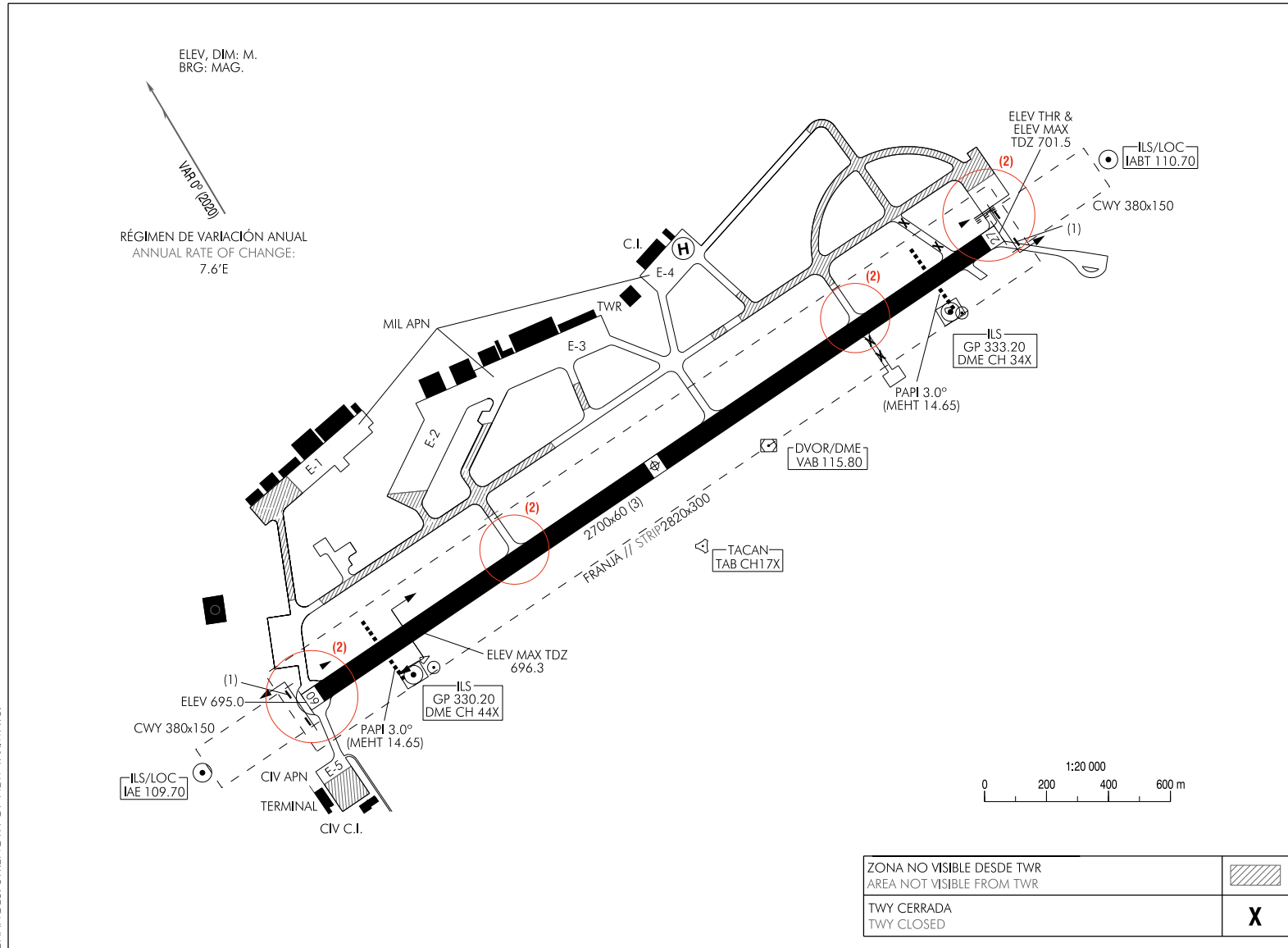
PLANO DE AERÓDROMO-OACI

38°56'55"N
001°51'48"W

ELEV 701

TWR 122.100
GND 121.800

ALBACETE



RWY	DIRECCIÓN DIRECTION	THR
09	088°	38°56'52.68"N 001°52'44.83"W
27	268°	38°56'56.14"N 001°50'52.75"W

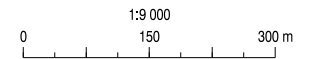
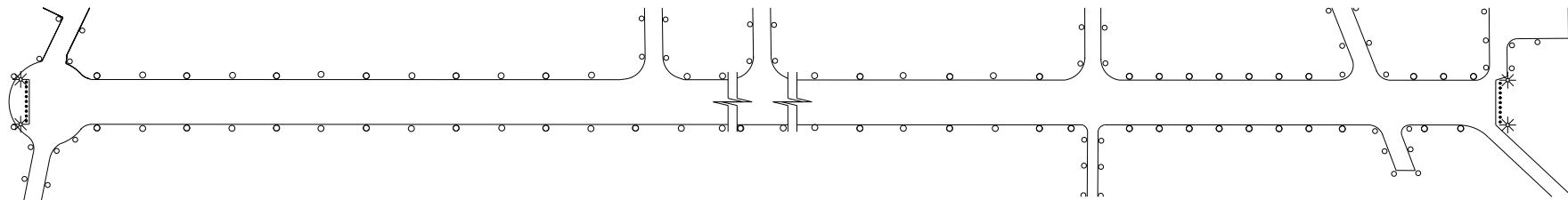
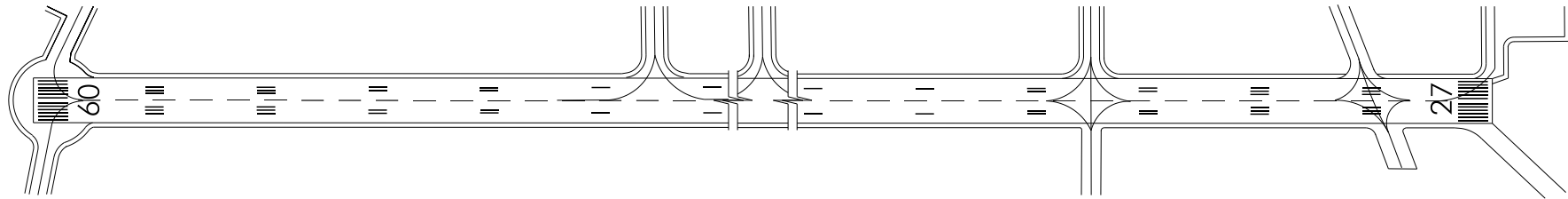
**RESISTENCIA
STRENGTH**

RWY: PCN 94/F/A/W/T
 CIV APN:
 E-5: PCN 32/F/A/W/T
 MIL APN:
 E-1: PCN 43/R/A/W/T
 E-2: PCN 43/R/B/W/T
 E-3: PCN 88/R/A/W/T
 E-3,1: PCN 85/R/A/W/T
 E-4: PCN 82/R/A/W/T
 TWY: A, RE-5: PCN 23/F/B/W/T;
 B: PCN 46/F/A/W/T;
 C: PCN 26/F/A/W/T;
 D, R-2, R-3: PCN 43/F/B/W/T;
 E: PCN 50/F/B/W/T;
 F: PCN 32/F/A/W/T;
 G: PCN 87/F/B/W/T;
 R-1: PCN 43/F/B/W/T, PCN 51/F/A/W/T;
 R-4: PCN 43/F/B/W/T, PCN 55/F/B/W/T;
 RE-1: PCN 68/R/B/W/T;
 RE-1A: PCN 18/F/D/W/T;
 RE-2: PCN 102/F/A/W/T;
 RE-3: PCN 5/F/D/W/T;
 RE-4: PCN 10/F/C/W/T;
 RE-6, RE-8, RE-10: PCN 9/F/A/W/T;
 RE-7: PCN 11/F/A/W/T;
 RE-9: PCN 12/F/A/W/T;
 RF1: PCN 41/F/B/W/T.

**NOTAS
NOTES**

(1) BARRERA DE RED Y CABLE // NET AND CABLE BARRIER.
 (2) LUGARES CRÍTICOS: VER AD 2-LEAB GMC.
 HOT SPOTS: SEE AD 2-LEAB GMC.
 (3) ASPH CONC.
 SWY (MIL) (3) CWY (MIL) FRANJA // STRIP (MIL)
 380x60 380x60 3078x60

CAMBIOS: RESISTENCIA DE NUEVAS CALLES DE RODAJE.
CHANGES: STRENGTH OF NEW TAXIWAYS.



CAMBIOS: TWY G.
CHANGES: TWY G.