

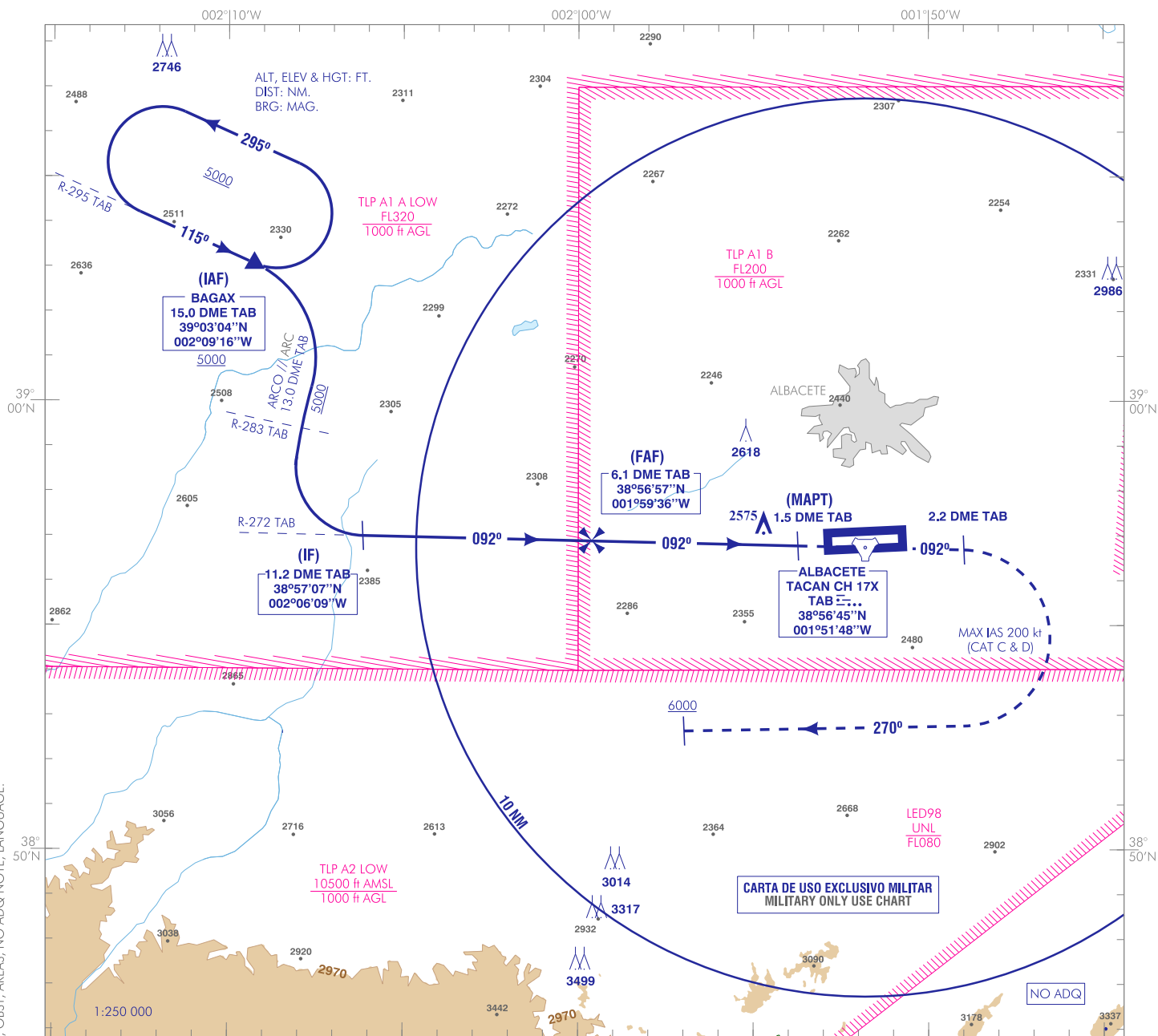
CARTA DE APROXIMACIÓN
POR INSTRUMENTOS-MIPS

ELEV AD
2301
VAR 0° (2020)

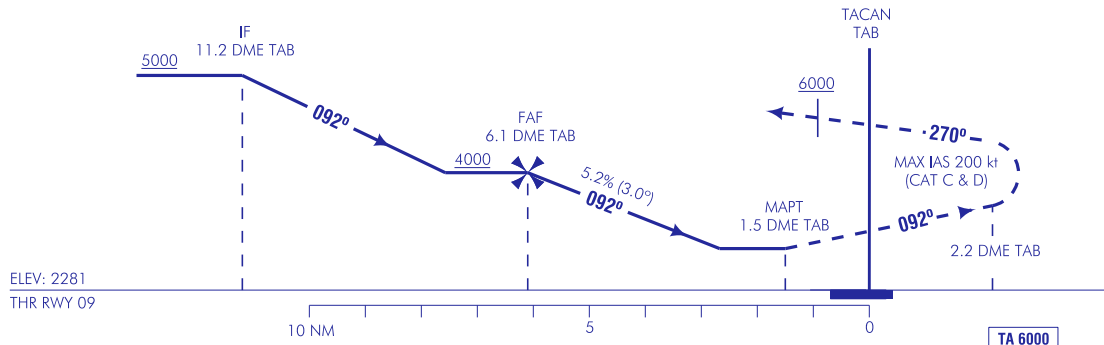
APP 118.725
278.025

TWR 122.100
386.675
GCA 281.075

ALBACETE
TACAN Z
RWY 09



FRUSTRADA: SUBIR DIRECTO HASTA 2.2 DME TAB. VIRAR A LA DERECHA (IAS MAX 200 kt) EN RUMBO MAGNÉTICO 270° SUBIENDO A 6000 O SUPERIOR. ESPERAR INSTRUCCIONES ATC.
FRUSTRADA FALLO DE COMUNICACIONES: SUBIR DIRECTO HASTA 2.2 DME TAB. VIRAR A LA DERECHA (IAS MAX 200 kt) EN RUMBO MAGNÉTICO 270° SUBIENDO A 6000 O SUPERIOR. VIRAR A LA DERECHA PARA INTERCEPTAR R-295 TAB A BAGAX.
MISSED APCH: CLIMB DIRECT TO 2.2 DME TAB. TURN RIGHT (MAX IAS 200 kt) ON MAGNETIC HEADING 270° CLIMBING AT 6000 OR ABOVE. WAIT FOR ATC INSTRUCTIONS.
MISSED APCH COMMUNICATIONS FAILURE: CLIMB DIRECT TO 2.2 DME TAB. TURN RIGHT (MAX IAS 200 kt) ON MAGNETIC HEADING 270° CLIMBING AT 6000 OR ABOVE. TURN RIGHT TO INTERCEPT R-295 TAB TO BAGAX.

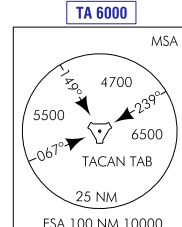


HGT REF ELEV THR RWY 09

CAT	A	B	C	D	HPMA
S-TACAN	2580-1.5 300 (300-1.5)				
CIRCUITO CIRCLING	2700/1.5 400 (400-1.5)	2800/1.6 500 (500-1.6)	3150/2.4 850 (900-2.4)	3150/3.6 850 (900-3.6)	2920/3.2 620 (700-3.2)

GS	kt	80	100	120	140	160	180
FAF-THR:	min:s	3:27	2:45	2:17	1:58	1:43	1:31
ROD: 5.2%	ft/min	424	531	637	743	849	955

ALT DME (TAB) FNA										
13	12	11	10	9	8	7	6	5	4	3
							4020	3700	3390	3070
								2750		



CAMBIOS: DECLINACIÓN MAGNÉTICA, RUMBOS Y RADIALES, CUADRO OCA/H, COORD IF, FAF Y MAPT, OBST, ZONAS, NOTA NO ADQ, IDIOMA. CHANGE: MAGNETIC VARIATION, HEADINGS AND RADIALS, OCA/H BOX, IF, FAF AND MAPT, OBST, AREAS, NO ADQ NOTE, LANGUAGE.

INTENCIONADAMENTE EN BLANCO
INTENTIONALLY BLANK