

CARTA DE APROXIMACIÓN
POR INSTRUMENTOS-MIPS

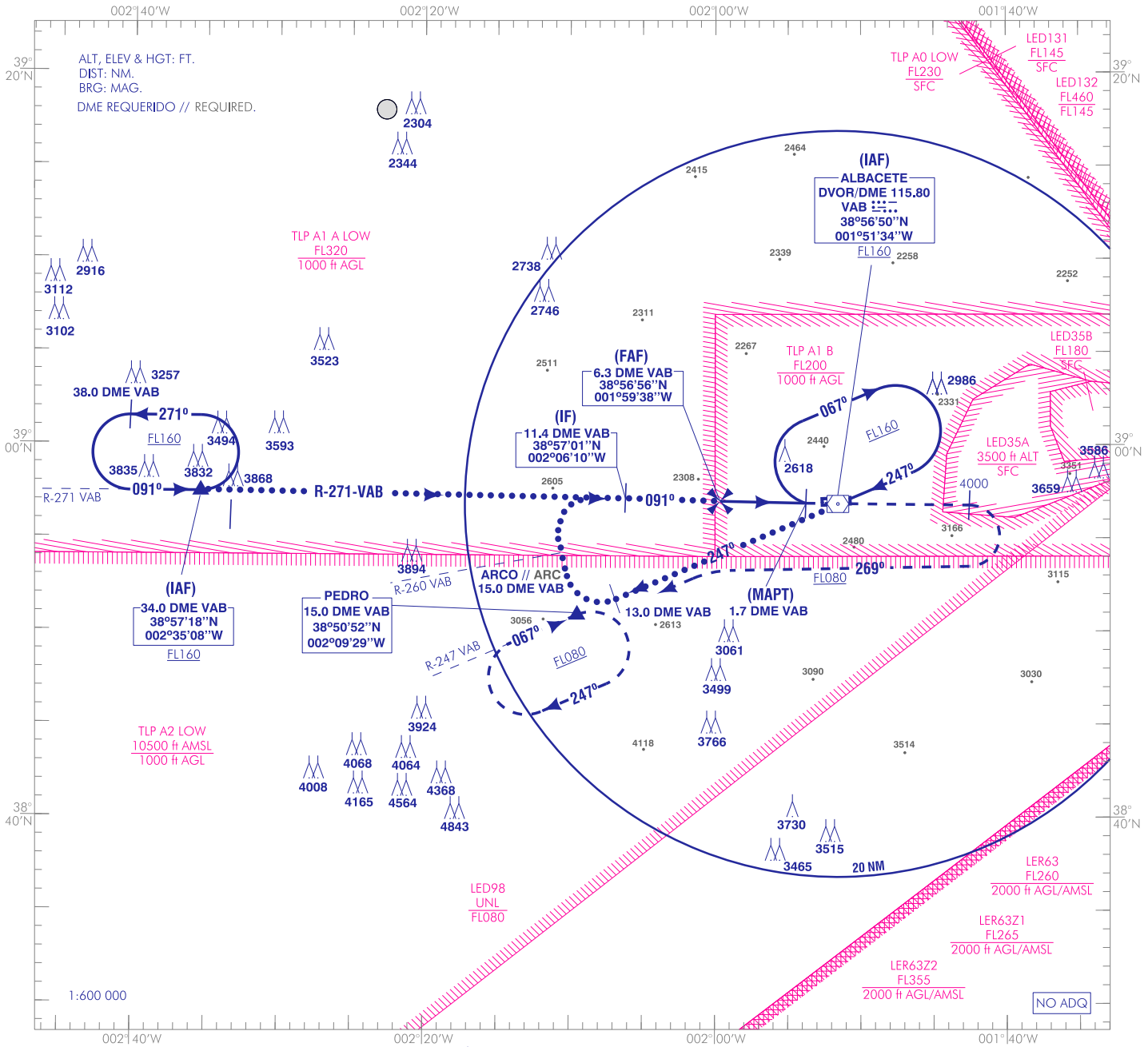
ELEV AD
2301
VAR 0° (2020)

APP 139.300
257.800

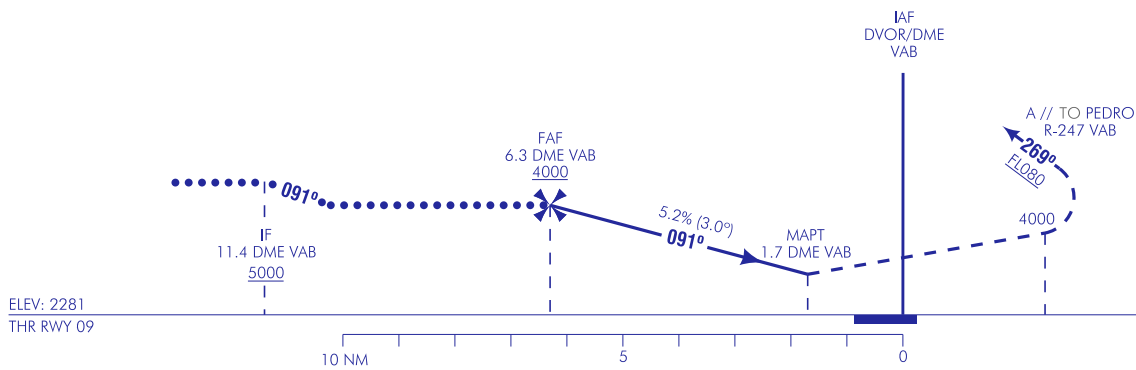
TWR 122.100
386.675
GCA 281.075

ALBACETE
HI-VOR
RWY 09

CAMBIOS: DECLINACIÓN MAGNÉTICA, RUMBOS Y RADIALES; CUADRO OCA/H, COORD IAF, IF, FAF Y MAPT, OBST, ZONAS, DENOMINACIÓN DEL PROCEDIMIENTO, NOTA NO ADQ, IDIOMA. CHANGES: MAGNETIC VARIATION, HEADINGS AND RADIALS, OCA/H BOX, IAF, IF, FAF AND MAPT COORD, OBST, AREAS, NAME OF THE PROCEDURE, NO ADQ NOTE, LANGUAGE.



FRUSTRADA: SUBIR DIRECTO A 4000. VIRAR A LA DERECHA EN RUMBO MAGNÉTICO 269° ASCIENDIENDO A FLO80. INTERCEPTAR R-247 VAB DIRECTO A PEDRO.
MISSED APCH: CLIMB DIRECT TO 4000. TURN RIGHT MAGNETIC HEADING 269° CLIMBING AT FLO80. INTERCEPT R-247 VAB DIRECT TO PEDRO.



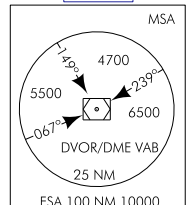
HGT REF ELEV THR RWY 09

CAT	A	B	C	D	HPMA
S-VOR	2580-1.5 300 (300-1.5)				
CIRCUITO	2700/1.5 400 (400-1.5)	2800/1.6 500 (500-1.6)	3150/2.4 850 (900-2.4)	3150/3.6 850 (900-3.6)	2920/3.2 620 (700-3.2)

GS	kt	80	100	120	140	160	180
FAF-THR:	min:s						
FAF-MAPT: 4.6 NM	min:s	3:27	2:45	2:17	1:58	1:43	1:31
ROD: 5.2%	ft/min	424	531	637	743	849	955

ALT DME (VAB) FNA										
13	12	11	10	9	8	7	6	5	4	3
							3960	3640	3320	3000
								2690		

TA 6000



INTENCIONADAMENTE EN BLANCO
INTENTIONALLY BLANK