

CARTA DE APROXIMACIÓN
POR INSTRUMENTOS-MIPS

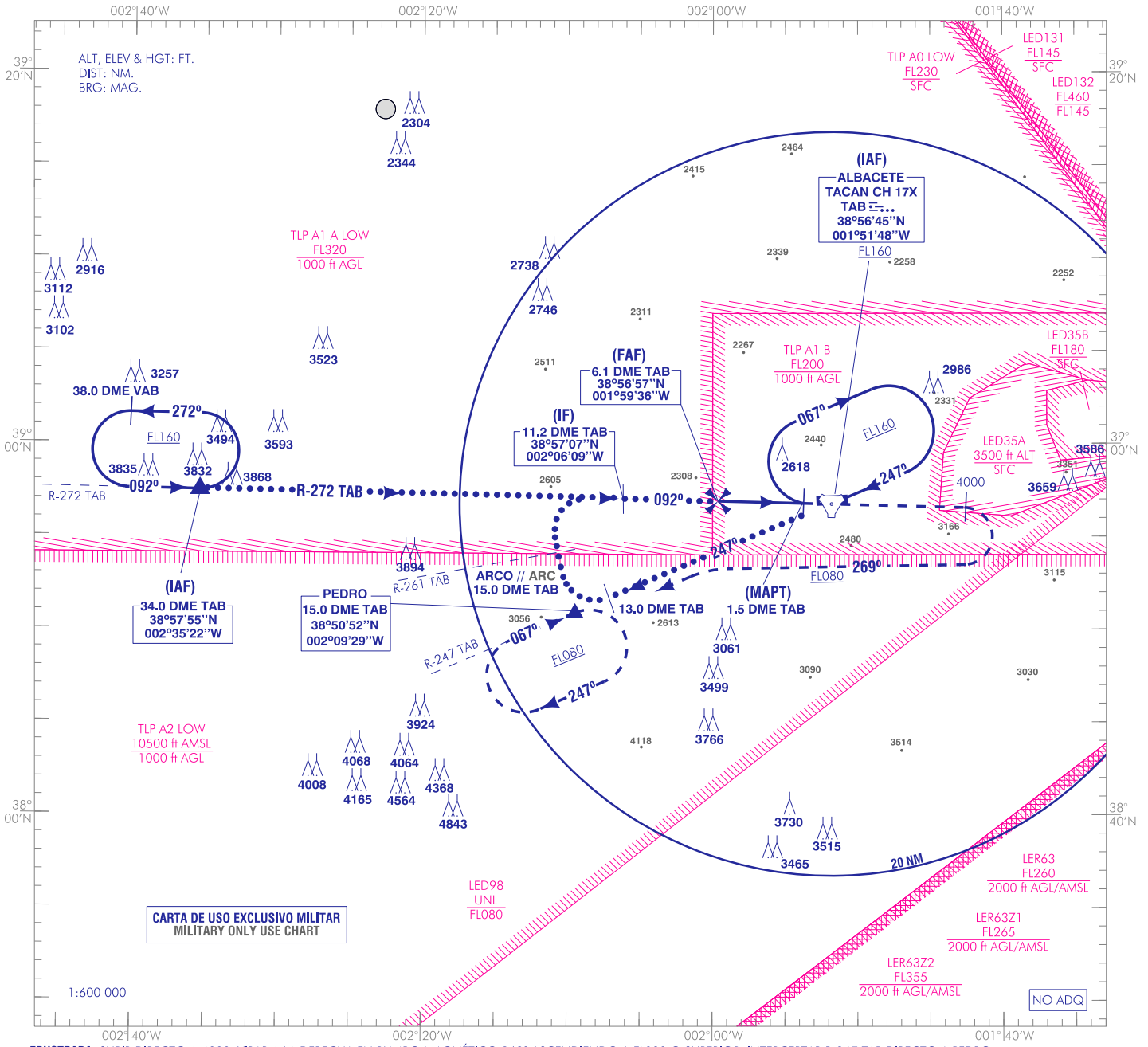
ELEV AD
2301
VAR 0° (2020)

APP 139.300
257.800

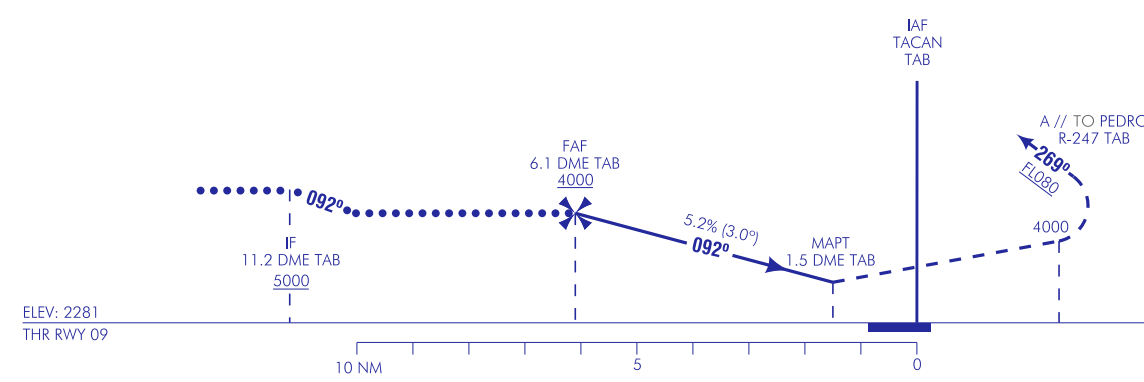
TWR 122.100
386.675
GCA 281.075

ALBACETE
HI-TACAN
RWY 09

CAMBIOS: DECLINACIÓN MAGNÉTICA, RUMBOS Y RADIALES; CUADRO OCA/H; COORD IAF, IF, FAF Y MAPT; OBST, ZONAS, NOTA NO ADQ, IDIOMA. CHANGES: MAGNETIC VARIATION, HEADINGS AND RADIALS, OCA/H BOX, IAF, IF, FAF AND MAPT COORD, OBST, AREAS, NO ADQ NOTE, LANGUAGE.



FRUSTRADA: SUBIR DIRECTO A 4000. VIRAR A LA DERECHA EN RUMBO MAGNÉTICO 269° ASCIENDIENDO A FLO80 O SUPERIOR. INTERCEPTAR R-247 TAB DIRECTO A PEDRO.
MISSED APCH: CLIMB DIRECT TO 4000. TURN RIGHT MAGNETIC HEADING 269° CLIMBING AT FLO80 OR ABOVE. INTERCEPT R-247 TAB DIRECT TO PEDRO.



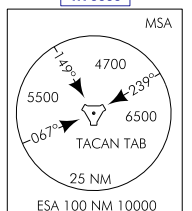
HGT REF ELEV THR RWY 09

| CAT | A | B | C | D | HPMA |
|--------------------------|------------------------------|------------------------------|------------------------------|------------------------------|------------------------------|
| S-TACAN | 2580-1.5 300 (300-1.5) | | | | |
| CIRCUITO CIRCLING | 2700/1.5 400 (400-1.5) | 2800/1.6 500 (500-1.6) | 3150/2.4 850 (900-2.4) | 3150/3.6 850 (900-3.6) | 2920/3.2 620 (700-3.2) |

| GS | kt | 80 | 100 | 120 | 140 | 160 | 180 |
|------------------|--------|------|------|------|------|------|------|
| FAF-THR: | min:s | 3:27 | 2:45 | 2:17 | 1:58 | 1:43 | 1:31 |
| ROD: 5.2% | ft/min | 424 | 531 | 637 | 743 | 849 | 955 |

| ALT DME (TAB) FNA | | | | | | | | | | |
|-------------------|----|----|----|---|---|---|------|------|------|------|
| 13 | 12 | 11 | 10 | 9 | 8 | 7 | 6 | 5 | 4 | 3 |
| | | | | | | | 4000 | 3700 | 3390 | 3070 |

TA 6000



INTENCIONADAMENTE EN BLANCO
INTENTIONALLY BLANK