

CARTA DE APROXIMACIÓN
POR INSTRUMENTOS-MIPS

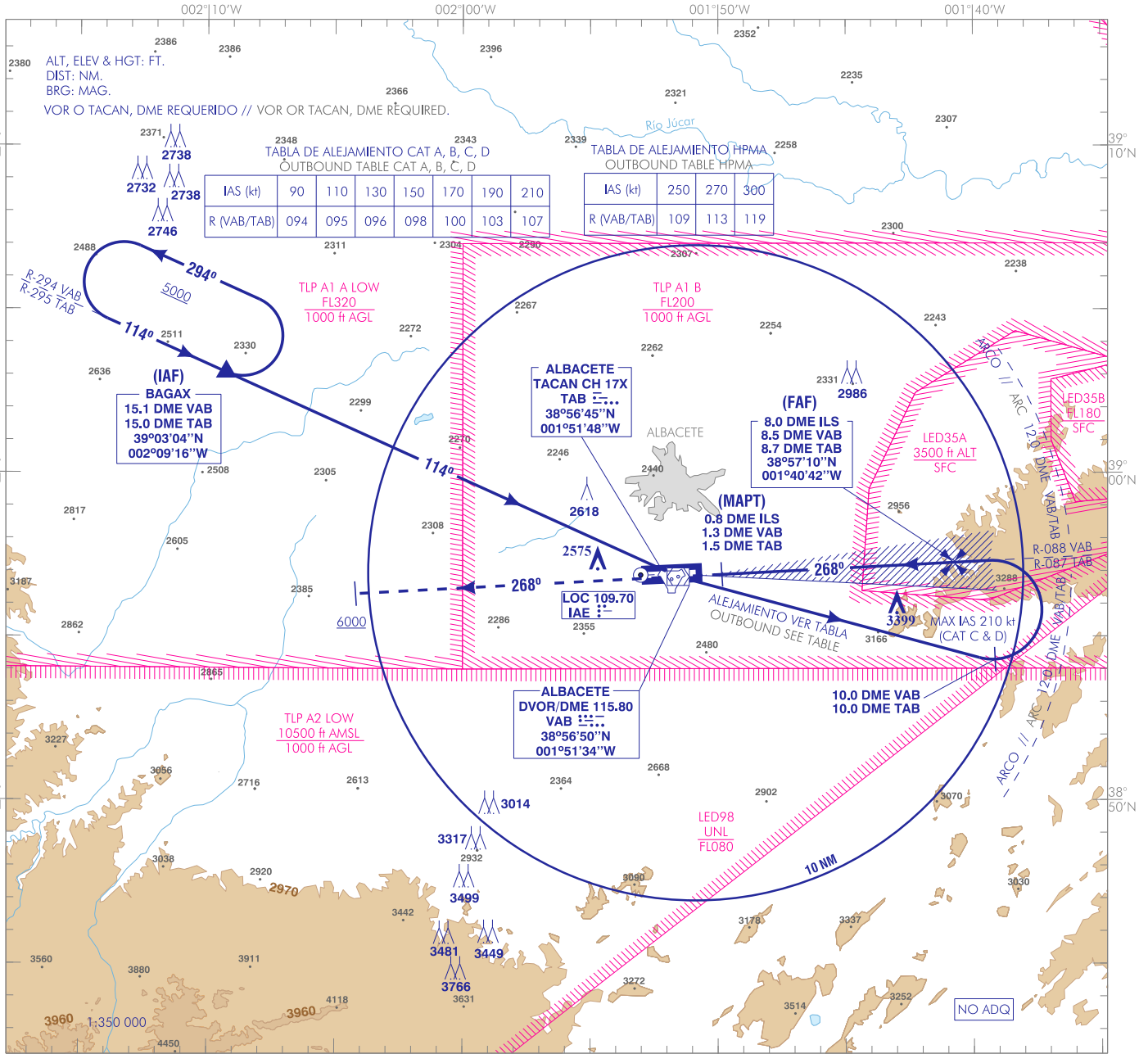
ELEV AD
2301
VAR 0° (2020)

APP 118.725
278.025

TWR 122.100
386.675
GCA 281.075

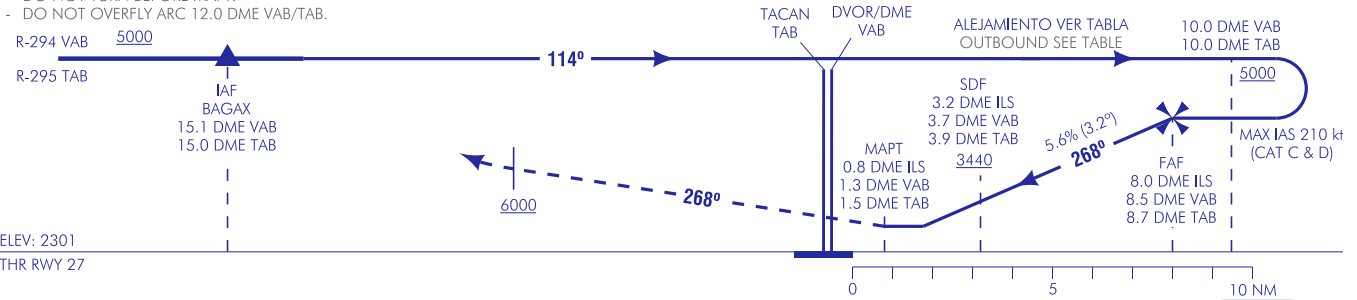
ALBACETE
LOC
RWY 27

CAMBIOS: DECLINACIÓN MAGNÉTICA, RUMBOS Y RADIALES; CUADROS OCA/H, GS Y ALT/DME, COORD FAF Y MAPT, OBST, ZONAS; DENOMINACIÓN DEL PROCEDIMIENTO, NOTA NO ADQ, IDIOMA. CHANGES: MAGNETIC VARIATION, HEADINGS AND RADIALS, OCA/H, GS AND ALT/DME BOXES, FAF AND MAPT COORD, OBST, AREAS, NAME OF THE PROCEDURE, NO ADQ NOTE, LANGUAGE.



FRUSTRADA: SUBIR DIRECTO A 6000 O SUPERIOR. ESPERAR INSTRUCCIONES ATC.
FRUSTRADA FALLO DE COMUNICACIONES: SUBIR DIRECTO A 6000 O SUPERIOR. VIRAR A LA DERECHA PARA INTERCEPTAR R-294 VAB/R-295 TAB A BAGAX.
MISSED APCH: CLIMB DIRECT TO 6000 OR ABOVE. WAIT FOR ATC INSTRUCTIONS.
MISSED APCH COMMUNICATIONS FAILURE: CLIMB DIRECT TO 6000 OR ABOVE. TURN RIGHT TO INTERCEPT R-294 VAB/R-295 TAB TO BAGAX.

- NOTAS:
 - NO VIRAR ANTES DEL MAPT.
 - NO SOBREVOLAR ARCO 12.0 DME VAB/TAB.
 NOTES:
 - DO NOT TURN BEFORE MAPT.
 - DO NOT OVERFLY ARC 12.0 DME VAB/TAB.

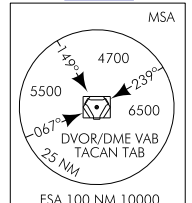


HGT REF ELEV THR RWY 27

| CAT | A | B | C | D | HPMA |
|----------------------|------------------------------|------------------------------|------------------------------|------------------------------|------------------------------|
| S-LOC | 2700-1.5 400 (400-1.5) | | | 2700-1.8 400 (400-1.8) | |
| CIRCUITO CIRCLING | 2700/1.5 400 (400-1.5) | 2800/1.6 500 (500-1.6) | 3150/2.4 850 (900-2.4) | 3150/3.6 850 (900-3.6) | 2920/3.2 620 (700-3.2) |

| GS | kt | 80 | 100 | 120 | 140 | 160 | 180 |
|-----------|--------|--|-----|-----|-----|-----|------|
| FAF-THR: | min:s | | | | | | |
| FAF-MAPT: | min:s | NO AUTORIZADO EL CRONOMETRAJE // TIMING NOT AUTHORIZED | | | | | |
| ROD: 5.6% | ft/min | 453 | 566 | 679 | 793 | 906 | 1019 |

| ALT DME (ILS) FNA | | | | | | | | | | | |
|-------------------|----|----|----|---|---|------|------|------|------|------|------|
| 13 | 12 | 11 | 10 | 9 | 8 | 7 | 6 | 5 | 4 | 3 | |
| | | | | | | 4710 | 4380 | 4040 | 3710 | 3370 | 3030 |



ALBACETE AD

REQUISITOS DE LA BASE DE DATOS AERONÁUTICA
 AERONAUTICAL DATABASE REQUIREMENTS

PROCEDIMIENTOS DE APROXIMACIÓN POR INSTRUMENTOS // INSTRUMENT APPROACH PROCEDURES

→ LOC RWY 27

| PUNTO POINT | LATITUD LATITUDE | LONGITUD LONGITUDE | AZIMUT VERDADERO TRUE BEARING | DISTANCIA DME DME DISTANCE (NM) |
|--|---------------------|-----------------------|----------------------------------|---------------------------------------|
| BAGAX (IAF) | 39°03'04.0"N | 002°09'16.0"W | 294.40° (VAB) | 15.14 DME VAB |
| → FAF | 38°57'09.7"N | 001°40'41.5"W | 267.80° (LOC IAE) | 7.95 DME ILS |
| → MAPT | 38°56'56.8"N | 001°49'53.9"W | 267.85° (LOC IAE) | 0.76 DME ILS |
| Aproximación final de no precisión - Pendiente (Ángulo de descenso) // Non-precision final approach - Slope (Descent angle) | | | | 5.55% (3.18°) |