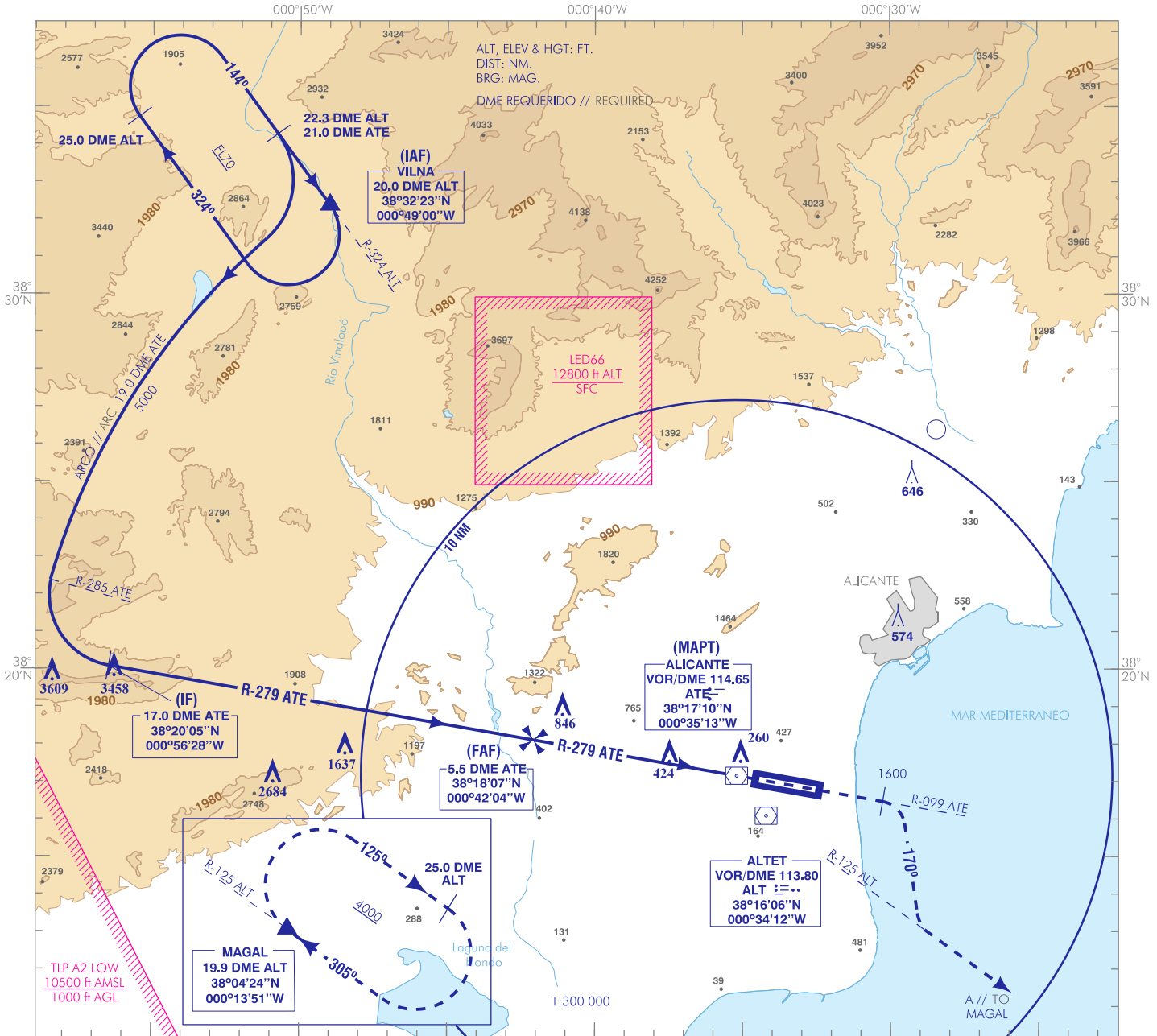


CARTA DE APROXIMACIÓN POR INSTRUMENTOS-OACI

ELEV AD 142 VAR 1°E (2020)

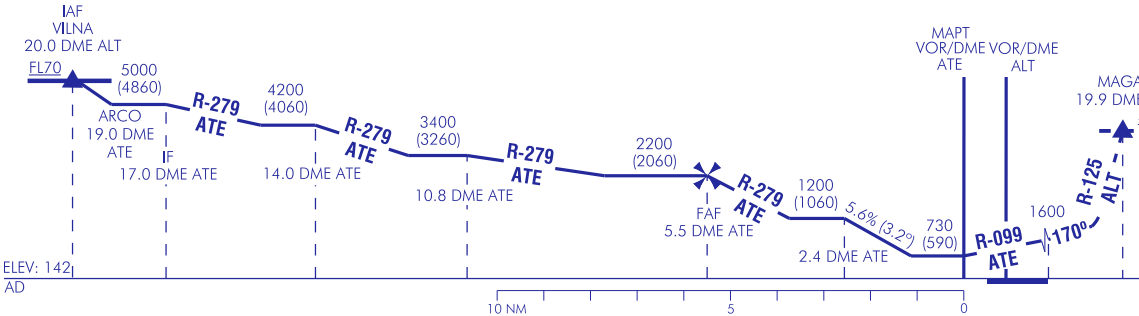
APP 120.400 TWR 118.155 GMC 130.655 ATIS 120.080



**FRUSTRADA:** SUBIR EN R-099 ATE HASTA ALCANZAR 1600. VIRAR A LA DERECHA PARA SEGUIR RUMBO MAGNÉTICO 170° PARA SEGUIR R-125 ALT DIRECTO A MAGAL SUBIENDO A 4000 PARA INTEGRARSE A LA ESPERA.

**MISSED APCH:** CLIMB ON R-099 ATE UP TO REACH 1600. TURN RIGHT TO FOLLOW MAGNETIC HEADING 170° TO FOLLOW R-125 ALT DIRECT TO MAGAL CLIMBING AT 4000 TO JOIN THE HOLDING.

CAMBIOS: NOMBRE DEL AD, ÁREAS TLP. CHANGES: NAME OF AD, TLP AREAS.



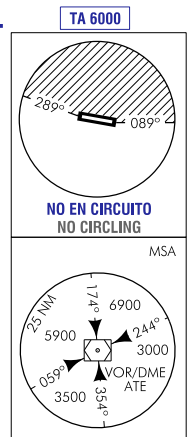
**HGT REF ELEV AD**

| OCA/H   | A         | B          | C           | D           |
|---|-----------|------------|-------------|-------------|
| 2.5%  |           | 730 (590)  |             |             |
| STA   |           |            |             |             |
| <b>En círculo (H) sobre Circling (H) over</b> | 960 (820) | 1090 (950) | 1240 (1100) | 1370 (1230) |

| GS                | kt     | 80   | 100 | 120 | 140 | 160 | 180  |
|-------------------|--------|--|-----|-----|-----|-----|------|
| <b>FAF-THR:</b>   | min:s  |  |     |     |     |     |      |
| <b>FAF-MAPT:</b>  | min:s  | NO AUTORIZADO EL CRONOMETRAJE // TIMING NOT AUTHORIZED |     |     |     |     |      |
| <b>ROD: 5.6 %</b> | ft/min | 454  | 567 | 680 | 794 | 908 | 1021 |

**ALT/HGT DME (ATE) FNA**

|  | 13 | 12 | 11 | 10 | 9 | 8 | 7 | 6 | 5           | 4           | 3           | 2          | 1         |
|--|----|----|----|----|---|---|---|---|-------------|-------------|-------------|------------|-----------|
|  |    |    |    |    |   |   |   |   | 2090 (1950) | 1750 (1610) | 1410 (1270) | 1070 (930) | 730 (590) |



→ ALICANTE/Alicante-Elche Miguel Hernández AD

REQUISITOS DE LA BASE DE DATOS AERONÁUTICA  
 AERONAUTICAL DATABASE REQUIREMENTS

PROCEDIMIENTOS DE APROXIMACIÓN POR INSTRUMENTOS // INSTRUMENT APPROACH PROCEDURES

VOR Z RWY 10

| PUNTO<br>POINT   | LATITUD<br>LATITUDE | LONGITUD<br>LONGITUDE | AZIMUT VERDADERO<br>TRUE BEARING | DISTANCIA DME<br>DME DISTANCE<br>(NM) |
|--|---------------------|-----------------------|----------------------------------|---------------------------------------|
| VILNA (IAF)  | 38°32'23.0"N        | 000°49'00.3"W         | 325.00° (ALT)                    | 20.00 DME ALT                         |
| IF   | 38°20'05.4"N        | 000°56'27.7"W         | 280.00° (ATE)                    | 16.99 DME ATE                         |
| FAF  | 38°18'07.2"N        | 000°42'03.9"W         | 280.00° (ATE)                    | 5.49 DME ATE                          |
| VOR/DME ATE (MAPT)   | 38°17'10.4"N        | 000°35'12.6"W         | —                                | —                                     |
| Aproximación final de no precisión - Pendiente (Ángulo de descenso) //<br>Non-precision final approach - Slope (Descent angle) |                     |                       |                                  | 5.60% (3.20°)                         |