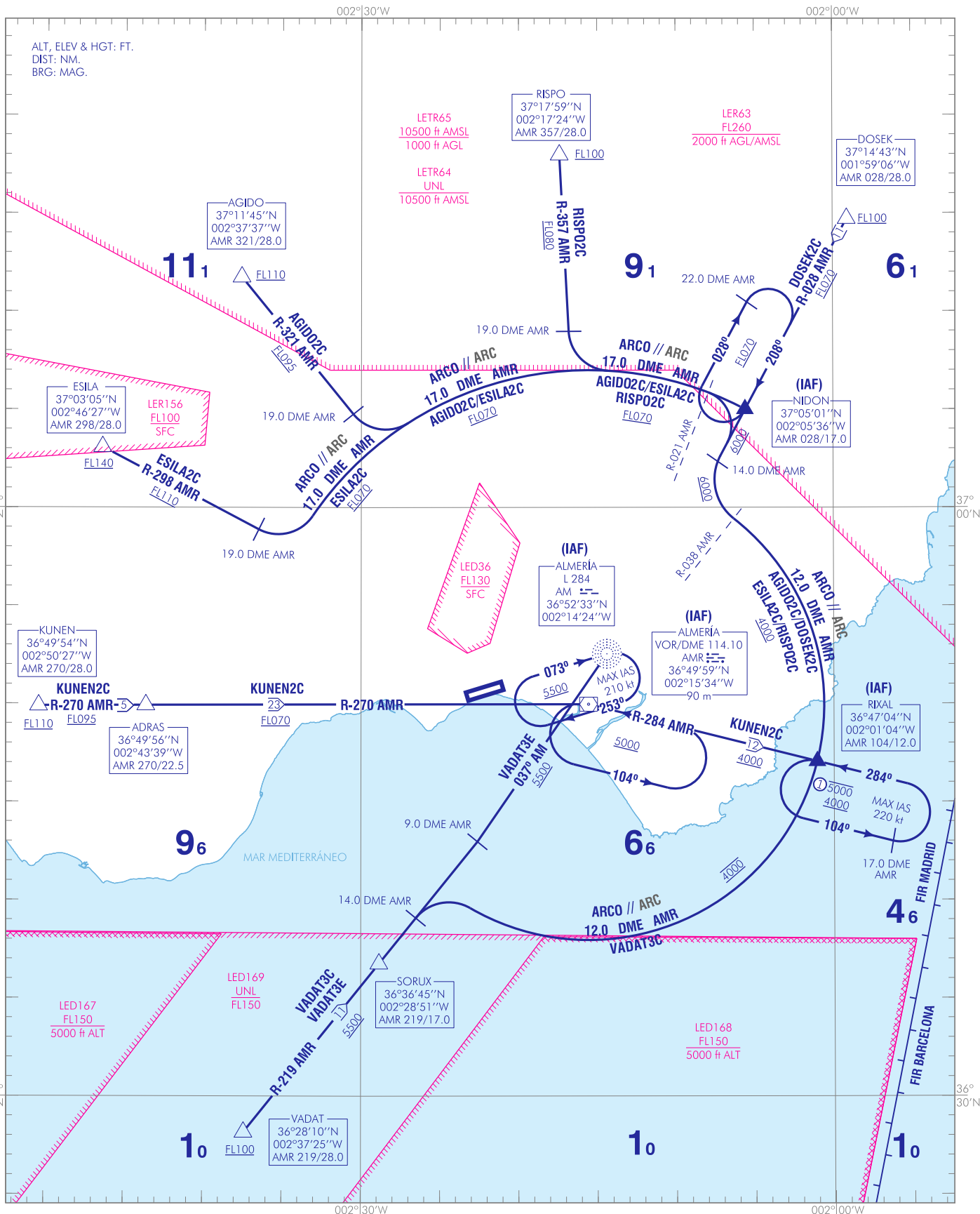
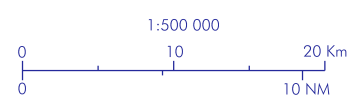


CAMBIOS: RUMBOS, RADIALES, DECLINACIÓN MAGNÉTICA, ZONA LER156.  
CHANGES: HEADINGS, RADIALS, MAGNETIC VARIATION, AREA LER156.



NOTAS:  
① NIVEL MAX DE ESPERA SUJETO A LA ACTIVIDAD DE LA LED168.  
- NOTAS, RESTRICCIONES: VER DESCRIPCIÓN TEXTUAL.

NOTES:  
① MAX LEVEL IN HOLDING PATTERN SUBJECT TO LED168 ACTIVITY.  
- NOTES, RESTRICTIONS: SEE TEXTUAL DESCRIPTION.



ALMERÍA AD

→ LLEGADAS NORMALIZADAS POR INSTRUMENTOS (STAR)

STANDARD INSTRUMENT ARRIVALS (STAR)

PISTA 25

RUNWAY 25

**LLEGADA AGIDO DOS CHARLIE (AGIDO2C).** Sujeta a la actividad de la LER63.

AGIDO, R-321 AMR / 19.0 DME AMR, virar a la izquierda arco 17.0 DME AMR, NIDON (IAF), R-028 AMR / 14.0 DME AMR, virar a la izquierda arco 12.0 DME AMR, R-038 AMR / arco 12.0 DME AMR, arco 12.0 DME AMR, RIXAL (IAF).

**AGIDO TWO CHARLIE ARRIVAL (AGIDO2C).** Subject to LER63 activity.

AGIDO, R-321 AMR / 19.0 DME AMR, turn left arc 17.0 DME AMR, NIDON (IAF), R-028 AMR / 14.0 DME AMR, turn left arc 12.0 DME AMR, R-038 AMR / arc 12.0 DME AMR, arc 12.0 DME AMR, RIXAL (IAF).

**LLEGADA DOSEK DOS CHARLIE (DOSEK2C).** Sujeta a la actividad de la LER63.

DOSEK, NIDON (IAF), R-028 AMR / 14.0 DME AMR, virar a la izquierda arco 12.0 DME AMR, R-038 AMR / arco 12.0 DME AMR, arco 12.0 DME AMR, RIXAL (IAF).

**DOSEK TWO CHARLIE ARRIVAL (DOSEK2C).** Subject to LER63 activity.

DOSEK, NIDON (IAF), R-028 AMR / 14.0 DME AMR, turn left arc 12.0 DME AMR, R-038 AMR / arc 12.0 DME AMR, arc 12.0 DME AMR, RIXAL (IAF).

**LLEGADA ESILA DOS CHARLIE (ESILA2C).** Sujeta a la actividad de la LER63.

ESILA, R-298 AMR / 19.0 DME AMR, virar a la izquierda arco 17.0 DME AMR, NIDON (IAF), R-028 AMR / 14.0 DME AMR, virar a la izquierda arco 12.0 DME AMR, R-038 AMR / arco 12.0 DME AMR, arco 12.0 DME AMR, RIXAL (IAF).

**ESILA TWO CHARLIE ARRIVAL (ESILA2C).** Subject to LER63 activity.

ESILA, R-298 AMR / 19.0 DME AMR, turn left arc 17.0 DME AMR, NIDON (IAF), R-028 AMR / 14.0 DME AMR, turn left arc 12.0 DME AMR, R-038 AMR / arc 12.0 DME AMR, arc 12.0 DME AMR, RIXAL (IAF).

**LLEGADA KUNEN DOS CHARLIE (KUNEN2C)**

KUNEN, ADRAS, VOR/DME AMR (IAF), RIXAL (IAF).

**KUNEN TWO CHARLIE ARRIVAL (KUNEN2C)**

KUNEN, ADRAS, VOR/DME AMR (IAF), RIXAL (IAF).

**LLEGADA RISPO DOS CHARLIE (RISPO2C).** Sujeta a la actividad de la LER63.

RISPO, R-357 AMR / 19.0 DME AMR, virar a la izquierda arco 17.0 DME AMR, NIDON (IAF), R-028 AMR / 14.0 DME AMR, virar a la izquierda arco 12.0 DME AMR, R-038 AMR / arco 12.0 DME AMR, arco 12.0 DME AMR, RIXAL (IAF).

**RISPO TWO CHARLIE ARRIVAL (RISPO2C).** Subject to LER63 activity.

RISPO, R-357 AMR / 19.0 DME AMR, turn left arc 17.0 DME AMR, NIDON (IAF), R-028 AMR / 14.0 DME AMR, turn left arc 12.0 DME AMR, R-038 AMR / arc 12.0 DME AMR, arc 12.0 DME AMR, RIXAL (IAF).

**LLEGADA VADAT TRES CHARLIE (VADAT3C)**

VADAT, SORUX, R-219 AMR/14.0 DME AMR, virar a la derecha arco 12.0 DME AMR, RIXAL (IAF).

**VADAT THREE CHARLIE ARRIVAL (VADAT3C)**

VADAT, SORUX, R-219 AMR / 14.0 DME AMR, turn right arc 12.0 DME AMR, RIXAL (IAF).

**LLEGADA VADAT TRES ECHO (VADAT3E)**

VADAT, SORUX, R-219 AMR / 9.0 DME AMR, 037° AM, L AM (IAF).

**VADAT THREE ECHO ARRIVAL (VADAT3E)**

VADAT, SORUX, R-219 AMR / 9.0 DME AMR, 037° AM, L AM (IAF).