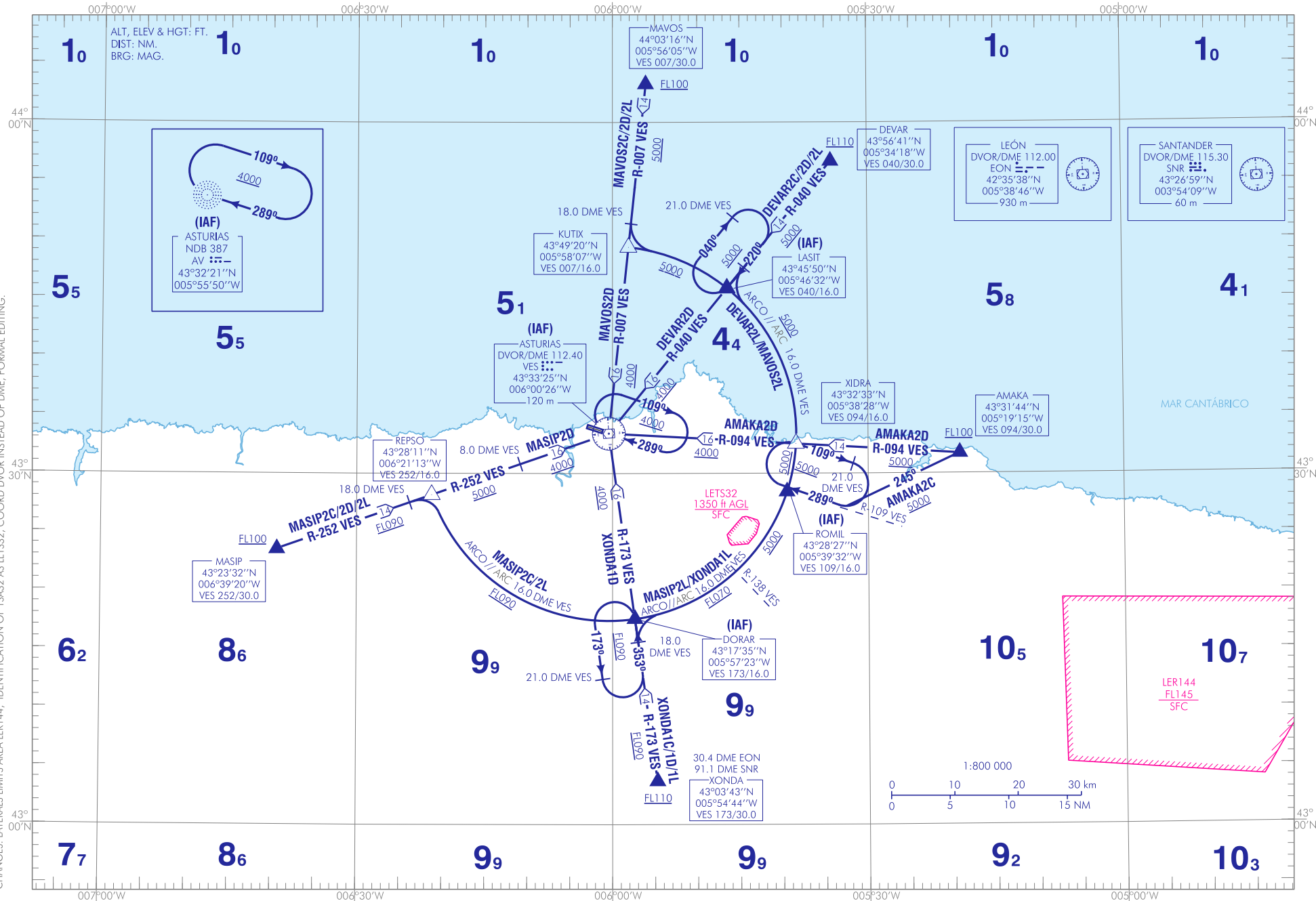


CAMBIOS: LÍMITES LATERALES ZONA LER144, IDENTIFICACIÓN ZONA TSA32 POR LETS32, COORD DVOR EN LUGAR DEL DME, CORRECCIÓN EDITORIAL.
CHANGES: LATERALS LIMITS AREA LER144, IDENTIFICATION OF TSA32 AS LETS32, COORD DVOR INSTEAD OF DME, FORMAL EDITING.



INTENCIONADAMENTE EN BLANCO
INTENTIONALLY BLANK

ASTURIAS AD

LLEGADAS NORMALIZADAS POR INSTRUMENTOS (STAR)

PISTA 29

→ LLEGADA AMAKA DOS CHARLIE (AMAKA2C)
AMAKA, rumbo magnético 245°, R-109 VES, ROMIL (IAF).

LLEGADA AMAKA DOS DELTA (AMAKA2D)
AMAKA, XIDRA, DVOR/DME VES (IAF).

LLEGADA DEVAR DOS CHARLIE (DEVAR2C)
DEVAR, LASIT (IAF).

LLEGADA DEVAR DOS DELTA (DEVAR2D)
DEVAR, LASIT, DVOR/DME VES (IAF).

LLEGADA DEVAR DOS LIMA (DEVAR2L)
DEVAR, LASIT, arco 16.0 DME VES, XIDRA, arco 16.0 DME VES,
ROMIL (IAF).

LLEGADA MASIP DOS CHARLIE (MASIP2C)
MASIP, REPSO, arco 16.0 DME VES, DORAR (IAF).

LLEGADA MASIP DOS DELTA (MASIP2D)
MASIP, REPSO, DVOR/DME VES (IAF).

LLEGADA MASIP DOS LIMA (MASIP2L)
MASIP, REPSO, arco 16.0 DME VES, DORAR, arco 16.0 DME VES,
ROMIL (IAF).

LLEGADA MAVOS DOS CHARLIE (MAVOS2C)
MAVOS, KUTIX, arco 16.0 DME VES, LASIT (IAF).

LLEGADA MAVOS DOS DELTA (MAVOS2D)
MAVOS, KUTIX, DVOR/DME VES (IAF).

LLEGADA MAVOS DOS LIMA (MAVOS2L)
MAVOS, KUTIX, arco 16.0 DME VES, LASIT, arco 16.0 DME VES,
XIDRA, arco 16.0 DME VES, ROMIL (IAF).

LLEGADA XONDA UNO CHARLIE (XONDA1C)
XONDA, DORAR (IAF).

LLEGADA XONDA UNO DELTA (XONDA1D)
XONDA, DORAR, DVOR/DME VES (IAF).

LLEGADA XONDA UNO LIMA (XONDA1L)
XONDA, DORAR, arco 16.0 DME VES, ROMIL (IAF).

STANDARD INSTRUMENTS ARRIVALS (STAR)

RUNWAY 29

AMAKA TWO CHARLIE ARRIVAL (AMAKA2C)
AMAKA, magnetic heading 245°, R-109 VES, ROMIL (IAF).

AMAKA TWO DELTA ARRIVAL (AMAKA2D)
AMAKA, XIDRA, DVOR/DME VES (IAF).

DEVAR TWO CHARLIE ARRIVAL (DEVAR2C)
DEVAR, LASIT (IAF).

DEVAR TWO DELTA ARRIVAL (DEVAR2D)
DEVAR, LASIT, DVOR/DME VES (IAF).

DEVAR TWO LIMA ARRIVAL (DEVAR2L)
DEVAR, LASIT, arc 16.0 DME VES, XIDRA, arc 16.0 DME VES,
ROMIL (IAF).

MASIP TWO CHARLIE ARRIVAL (MASIP2C)
MASIP, REPSO, arc 16.0 DME VES, DORAR (IAF).

MASIP TWO DELTA ARRIVAL (MASIP2D)
MASIP, REPSO, DVOR/DME VES (IAF).

MASIP TWO LIMA ARRIVAL (MASIP2L)
MASIP, REPSO, arc 16.0 DME VES, DORAR, arc 16.0 DME VES,
ROMIL (IAF).

MAVOS TWO CHARLIE ARRIVAL (MAVOS2C)
MAVOS, KUTIX, arc 16.0 DME VES, LASIT (IAF).

MAVOS TWO DELTA ARRIVAL (MAVOS2D)
MAVOS, KUTIX, DVOR/DME VES (IAF).

MAVOS TWO LIMA ARRIVAL (MAVOS2L)
MAVOS, KUTIX, arc 16.0 DME VES, LASIT, arc 16.0 DME VES,
XIDRA, arc 16.0 DME VES, ROMIL (IAF).

XONDA ONE CHARLIE ARRIVAL (XONDA1C)
XONDA, DORAR (IAF).

XONDA ONE DELTA ARRIVAL (XONDA1D)
XONDA, DORAR, DVOR/DME VES (IAF).

XONDA ONE LIMA ARRIVAL (XONDA1L)
XONDA, DORAR, arc 16.0 DME VES, ROMIL (IAF).

INTENCIONADAMENTE EN BLANCO
INTENTIONALLY BLANK