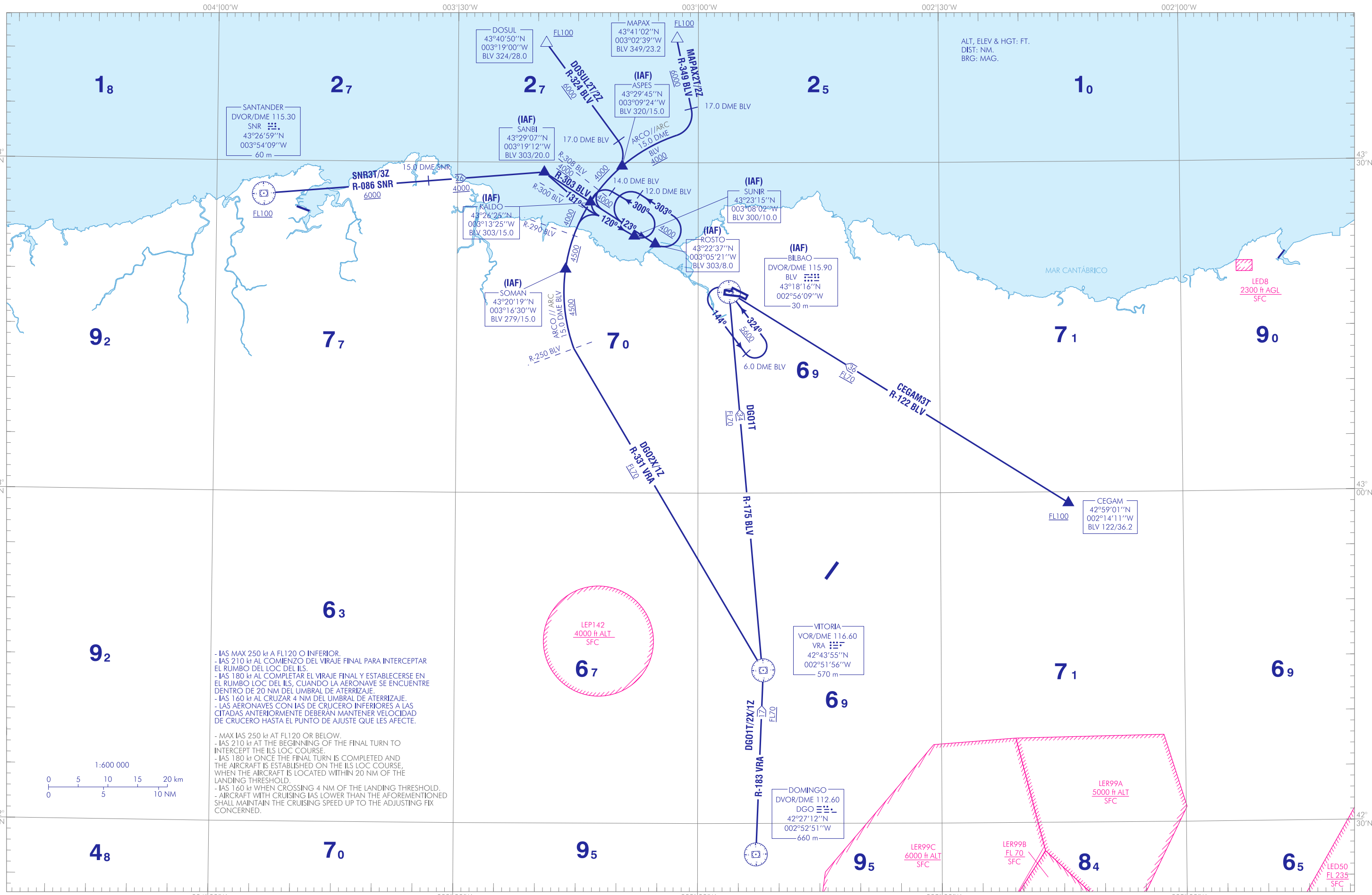


CARTA DE LLEGADA NORMALIZADA  
VUELO POR INSTRUMENTOS (STAR)-OACI

TA 6000  
VAR 0° (2020)

APP 127.450  
TWR 118.500

BILBAO  
RWY 12  
CEGAM3T  
MAPAX2T/2Z  
DGO1T/2X/1Z  
SNR3T/3Z  
DOSUL2T/2Z



CAMBIOS: DECLINACIÓN MAGNÉTICA, RUMBOS Y RADIALES; AMA, COORD DVOR EN LUGAR DE DME DGO Y SNR; NOTAS.  
CHANGES: MAGNETIC VARIATION, HEADINGS AND RADIALS; AMA, COORD DVOR INSTEAD OF DME DGO AND SNR; NOTES.

- IAS MAX 250 kt A FL120 O INFERIOR.
  - IAS 210 kt AL COMIENZO DEL VIRAJE FINAL PARA INTERCEPTAR EL RUMBO DEL LOC DEL ILS.
  - IAS 180 kt AL COMPLETAR EL VIRAJE FINAL Y ESTABLECERSE EN EL RUMBO LOC DEL ILS, CUANDO LA AERONAVE SE ENCUENTRE DENTRO DE 20 NM DEL UMBRAL DE ATERRIZAJE.
  - IAS 160 kt AL CRUZAR 4 NM DEL UMBRAL DE ATERRIZAJE.
  - LAS AERONAVES CON IAS DE CRUCERO INFERIORES A LAS CIUDADES ANTERIORMENTE DEBERÁN MANTENER VELOCIDAD DE CRUCERO HASTA EL PUNTO DE AJUSTE QUE LES AFECTE.
- 
- MAX IAS 250 kt AT FL120 OR BELOW.
  - IAS 210 kt AT THE BEGINNING OF THE FINAL TURN TO INTERCEPT THE ILS LOC COURSE.
  - IAS 180 kt ONCE THE FINAL TURN IS COMPLETED AND THE AIRCRAFT IS ESTABLISHED ON THE ILS LOC COURSE, WHEN THE AIRCRAFT IS LOCATED WITHIN 20 NM OF THE LANDING THRESHOLD.
  - IAS 160 kt WHEN CROSSING 4 NM OF THE LANDING THRESHOLD.
  - AIRCRAFT WITH CRUISING IAS LOWER THAN THE AFOREMENTIONED SHALL MAINTAIN THE CRUISING SPEED UP TO THE ADJUSTING FIX CONCERNED.

INTENCIONADAMENTE EN BLANCO  
INTENTIONALLY BLANK

BILBAO AD

LLEGADAS NORMALIZADAS POR INSTRUMENTOS (STAR)

PISTA 12

LLEGADA CEGAM TRES TANGO (CEGAM3T)  
CEGAM, DVOR/DME BLV (IAF).

LLEGADA DOMINGO UNO TANGO (DGO1T)  
DVOR/DME DGO, VOR/DME VRA, DVOR/DME BLV (IAF).

→ LLEGADA DOMINGO DOS X-RAY (DGO2X)  
DVOR/DME DGO, VOR/DME VRA, R-331 VRA/R-250 BLV, ARCO  
15.0 DME BLV, SOMAN, ARCO 15.0 DME BLV, KALDO (IAF),  
ROSTO (IAF).

→ LLEGADA DOMINGO UNO ZULU (DGO1Z)  
DVOR/DME DGO, VOR/DME VRA, R-331 VRA/R-250 BLV, ARCO  
15.0 DME BLV, SOMAN (IAF), ARCO 15.0 DME BLV, R-300 BLV,  
SUNIR (IAF).

→ LLEGADA DOSUL DOS TANGO (DOSUL2T)  
DOSUL, R-324 BLV/17.0 DME BLV, ARCO 15.0 DME BLV, ASPES  
(IAF), ARCO 15.0 DME BLV/R-300 BLV, SUNIR (IAF).

→ LLEGADA DOSUL DOS ZULU (DOSUL2Z)  
DOSUL, R-324 BLV/17.0 DME BLV, ARCO 15.0 DME BLV, KALDO  
(IAF), ROSTO (IAF).

→ LLEGADA MAPAX DOS TANGO (MAPAX2T)  
MAPAX, R-349 BLV/17.0 DME BLV, ARCO 15.0 DME BLV, ASPES  
(IAF), ARCO 15.0 DME BLV/R-300 BLV, SUNIR (IAF).

LLEGADA MAPAX DOS ZULU (MAPAX2Z)  
MAPAX, R-349 BLV/17.0 DME BLV, ARCO 15.0 DME BLV, KALDO  
(IAF), ROSTO (IAF).

→ LLEGADA SANTANDER TRES TANGO (SNR3T)  
DVOR/DME SNR, R-086 SNR/15.0 DME SNR, SANBI (IAF), RUTA  
MAGNÉTICA 131° / R-300 BLV, SUNIR (IAF).

LLEGADA SANTANDER TRES ZULU (SNR3Z)  
DVOR/DME SNR, R-086 SNR/15.0 DME SNR, SANBI, KALDO (IAF),  
ROSTO (IAF).

STANDARD INSTRUMENT ARRIVALS (STAR)

RUNWAY 12

CEGAM THREE TANGO ARRIVAL (CEGAM3T)  
CEGAM, DVOR/DME BLV (IAF).

DOMINGO ONE TANGO ARRIVAL (DGO1T)  
DVOR/DME DGO, VOR/DME VRA, DVOR/DME BLV (IAF).

DOMINGO TWO X-RAY ARRIVAL (DGO2X)  
DVOR/DME DGO, VOR/DME VRA, R-331 VRA/R-250 BLV, ARC 15.0  
DME BLV, SOMAN, ARC 15.0 DME BLV, KALDO (IAF), ROSTO  
(IAF).

DOMINGO ONE ZULU ARRIVAL (DGO1Z)  
DVOR/DME DGO, VOR/DME VRA, R-331 VRA/R-250 BLV, ARC 15.0  
DME BLV, SOMAN (IAF), ARC 15.0 DME BLV, R-300 BLV, SUNIR  
(IAF).

DOSUL TWO TANGO ARRIVAL (DOSUL2T)  
DOSUL, R-324 BLV/17.0 DME BLV, ARC 15.0 DME BLV, ASPES  
(IAF), ARC 15.0 DME BLV/R-300 BLV, SUNIR (IAF).

DOSUL TWO ZULU ARRIVAL (DOSUL2Z)  
DOSUL, R-324 BLV/17.0 DME BLV, ARC 15.0 DME BLV, KALDO  
(IAF), ROSTO (IAF).

MAPAX TWO TANGO ARRIVAL (MAPAX2T)  
MAPAX, R-349 BLV/17.0 DME BLV, ARC 15.0 DME BLV, ASPES  
(IAF), ARC 15.0 DME BLV/R-300 BLV, SUNIR (IAF).

MAPAX TWO ZULU ARRIVAL (MAPAX2Z)  
MAPAX, R-349 BLV/17.0 DME BLV, ARC 15.0 DME BLV, KALDO  
(IAF), ROSTO (IAF).

SANTANDER THREE TANGO ARRIVAL (SNR3T)  
DVOR/DME SNR, R-086 SNR/15.0 DME SNR, SANBI (IAF),  
MAGNETIC TRACK 131° / R-300 BLV, SUNIR (IAF).

SANTANDER THREE ZULU ARRIVAL (SNR3Z)  
DVOR/DME SNR, R-086 SNR/15.0 DME SNR, SANBI, KALDO (IAF),  
ROSTO (IAF).

**INTENCIONADAMENTE EN BLANCO**  
**INTENTIONALLY BLANK**