

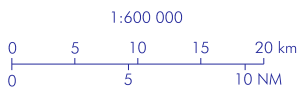
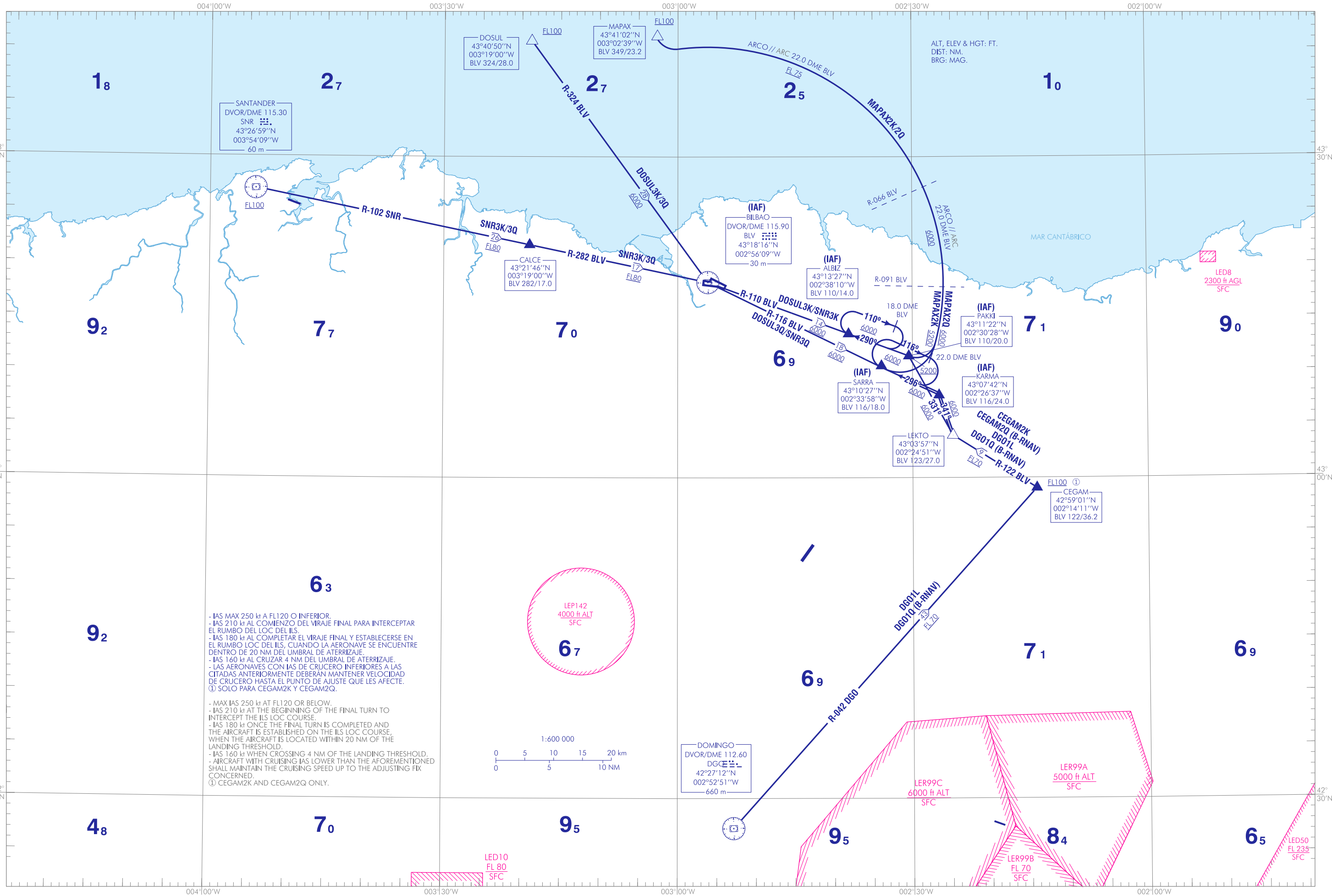
CARTA DE LLEGADA NORMALIZADA  
VUELO POR INSTRUMENTOS (STAR)-OACI

TA 6000  
VAR 0° (2020)

APP 127.450  
TWR 118.500

**BILBAO**  
RWY 30  
CEGAM2K/2Q  
MAPAX2K/2Q  
DGO1L/1Q  
SNR3K/3Q  
DOSUL3K/3Q

CAMBIOS: DECLINACIÓN MAGNÉTICA, RUMBOS Y RADIALES, AMA, COORD DVOR EN LUGAR DE DME DGO Y SNR, NOTAS.  
CHANGES: MAGNETIC VARIATION, HEADINGS AND RADIALS, AMA, COORD DVOR INSTEAD OF DME DGO AND SNR, NOTES.



**INTENCIONADAMENTE EN BLANCO**  
**INTENTIONALLY BLANK**

## BILBAO AD

## LLEGADAS NORMALIZADAS POR INSTRUMENTOS (STAR)

## PISTA 30

- LLEGADA CEGAM DOS KILO (CEGAM2K)  
CEGAM, LEKTO, PAKKI (IAF), ALBIZ (IAF).
- LLEGADA CEGAM DOS QUEBEC (CEGAM2Q) B-RNAV. Se requiere aprobación B-RNAV  
CEGAM, LEKTO, KARMA (IAF), SARRA (IAF).

LLEGADA DOMINGO UNO LIMA (DGO1L)  
DVOR/DME DGO, CEGAM, LEKTO, PAKKI (IAF), ALBIZ (IAF).

LLEGADA DOMINGO UNO QUEBEC (DGO1Q) B-RNAV. Se requiere aprobación B-RNAV  
DVOR/DME DGO, CEGAM, LEKTO, KARMA (IAF), SARRA (IAF).

- LLEGADA DOSUL TRES KILO (DOSUL3K)  
DOSUL, DVOR/DME BLV, ALBIZ (IAF).
- LLEGADA DOSUL TRES QUEBEC (DOSUL3Q)  
DOSUL, DVOR/DME BLV, SARRA (IAF).
- LLEGADA MAPAX DOS KILO (MAPAX2K)  
MAPAX, ARCO 22.0 DME BLV, PAKKI (IAF).
- LLEGADA MAPAX DOS QUEBEC (MAPAX2Q)  
MAPAX, ARCO 22.0 DME BLV, SARRA (IAF).
- LLEGADA SANTANDER TRES KILO (SNR3K)  
DVOR/DME SNR, CALCE, DVOR/DME BLV, ALBIZ (IAF).
- LLEGADA SANTANDER TRES QUEBEC (SNR3Q)  
DVOR/DME SNR, CALCE, DVOR/DME BLV, SARRA (IAF).

## STANDARD INSTRUMENT ARRIVALS (STAR)

## RUNWAY 30

CEGAM TWO KILO ARRIVAL (CEGAM2K)  
CEGAM, LEKTO, PAKKI (IAF), ALBIZ (IAF).

CEGAM TWO QUEBEC ARRIVAL (CEGAM2Q) B-RNAV. B-RNAV approval required  
CEGAM, LEKTO, KARMA (IAF), SARRA (IAF).

DOMINGO ONE LIMA ARRIVAL (DGO1L)  
DVOR/DME DGO, CEGAM, LEKTO, PAKKI (IAF), ALBIZ (IAF).

DOMINGO ONE QUEBEC ARRIVAL (DGO1Q) B-RNAV. B-RNAV approval required.  
DVOR/DME DGO, CEGAM, LEKTO, KARMA (IAF), SARRA (IAF).

DOSUL THREE KILO ARRIVAL (DOSUL3K)  
DOSUL, DVOR/DME BLV, ALBIZ (IAF).

DOSUL THREE QUEBEC ARRIVAL (DOSUL3Q)  
DOSUL, DVOR/DME BLV, SARRA (IAF).

MAPAX TWO KILO ARRIVAL (MAPAX2K)  
MAPAX, ARC 22.0 DME BLV, PAKKI (IAF).

MAPAX TWO QUEBEC ARRIVAL (MAPAX2Q)  
MAPAX, ARC 22.0 DME BLV, SARRA (IAF).

SANTANDER THREE KILO ARRIVAL (SNR3K)  
DVOR/DME SNR, CALCE, DVOR/DME BLV, ALBIZ (IAF).

SANTANDER THREE QUEBEC ARRIVAL (SNR3Q)  
DVOR/DME SNR, CALCE, DVOR/DME BLV, SARRA (IAF).

**INTENCIONADAMENTE EN BLANCO**  
**INTENTIONALLY BLANK**