

TA 6000

RWY 04 RWY 22 RWY 04/22

NEA1B AMGAR1B AMGAR2A ARLUN3A DGO1H
RATAS3J NEA4A UNGASTA

CARTA DE LLEGADA NORMALIZADA
VUELO POR INSTRUMENTOS (STAR)-OACI

VAR 0° (2020)

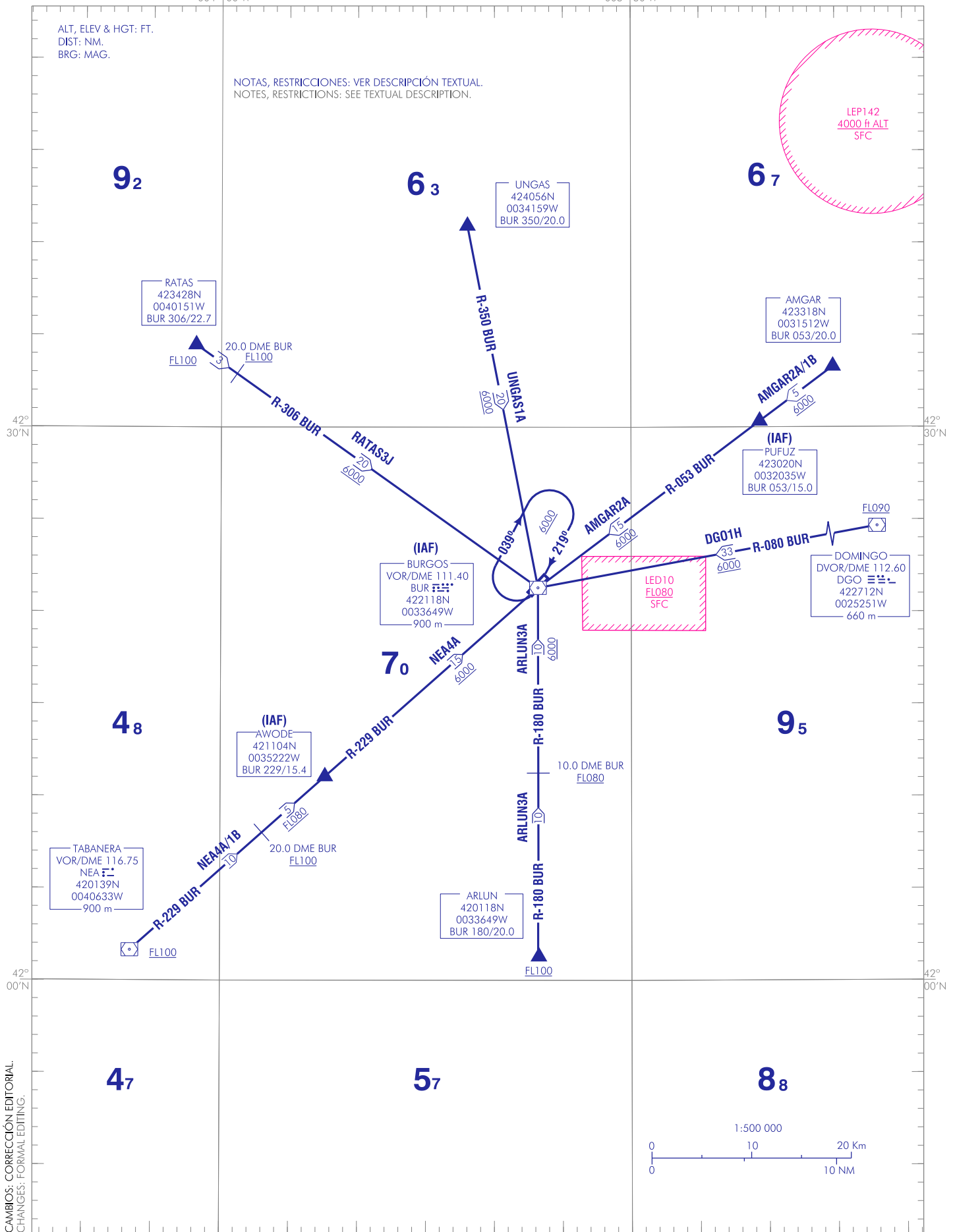
AFIS 125.430 C

004°10'00"W

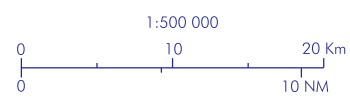
003°13'00"W

ALT, ELEV & HGT: FT.
DIST: NM.
BRG: MAG.

NOTAS, RESTRICCIONES: VER DESCRIPCIÓN TEXTUAL.
NOTES, RESTRICTIONS: SEE TEXTUAL DESCRIPTION.



CAMBIOS: CORRECCIÓN EDITORIAL.
CHANGES: FORMAL EDITING.



BURGOS/Villafraa AD

LLEGADAS NORMALIZADAS POR INSTRUMENTOS (STAR)

STANDARD INSTRUMENT ARRIVALS (STAR)

→ **PISTA 04**

RUNWAY 04

LLEGADA TABANERA UNO BRAVO (NEA1B)
VOR/DME NEA, R-229 BUR/20.0 DME BUR, AWODE (IAF).

TABANERA ONE BRAVO ARRIVAL (NEA1B)
VOR/DME NEA, R-229 BUR/20.0 DME BUR, AWODE (IAF).

→ **PISTA 22**

RUNWAY 22

LLEGADA AMGAR UNO BRAVO (AMGAR1B)
AMGAR, PUFUZ (IAF).

AMGAR ONE BRAVO ARRIVAL (AMGAR1B)
AMGAR, PUFUZ (IAF).

PISTA 04/22

RUNWAY 04/22

→ **LLEGADA AMGAR DOS ALPHA (AMGAR2A). Sujeta a la actividad de la LED10.**
AMGAR, PUFUZ, VOR/DME BUR (IAF).

AMGAR TWO ALPHA ARRIVAL (AMGAR2A). Subject to LED10 activity.
AMGAR, PUFUZ, VOR/DME BUR (IAF).

→ **LLEGADA ARLUN TRES ALPHA (ARLUN3A)**
ARLUN, R-180 BUR/10.0 DME BUR, VOR/DME BUR (IAF).

ARLUN THREE ALPHA ARRIVAL (ARLUN3A)
ARLUN, R-180 BUR/10.0 DME BUR, VOR/DME BUR (IAF).

LLEGADA DOMINGO UNO HOTEL (DGO1H). Sujeta a la actividad de la LED10.
DVOR/DME DGO, VOR/DME BUR (IAF).

DOMINGO ONE HOTEL ARRIVAL (DGO1H). Subject to LED10 activity.
DVOR/DME DGO, VOR/DME BUR (IAF).

→ **LLEGADA RATAS TRES JULIETT (RATAS3J)**
RATAS, R-306 BUR/20.0 DME BUR, VOR/DME BUR (IAF).

RATAS THREE JULIETT ARRIVAL (RATAS3J)
RATAS, R-306 BUR/20.0 DME BUR, VOR/DME BUR (IAF).

→ **LLEGADA TABANERA CUATRO ALPHA (NEA4A)**
VOR/DME NEA, R-229 BUR/20.0 DME BUR, AWODE, VOR/DME BUR (IAF).

TABANERA FOUR ALPHA ARRIVAL (NEA4A)
VOR/DME NEA, R-229 BUR/20.0 DME BUR, AWODE, VOR/DME BUR (IAF).

LLEGADA UNGAS UNO ALPHA (UNGAS1A)
UNGAS, VOR/DME BUR (IAF).

UNGAS ONE ALPHA ARRIVAL (UNGAS1A)
UNGAS, VOR/DME BUR (IAF).