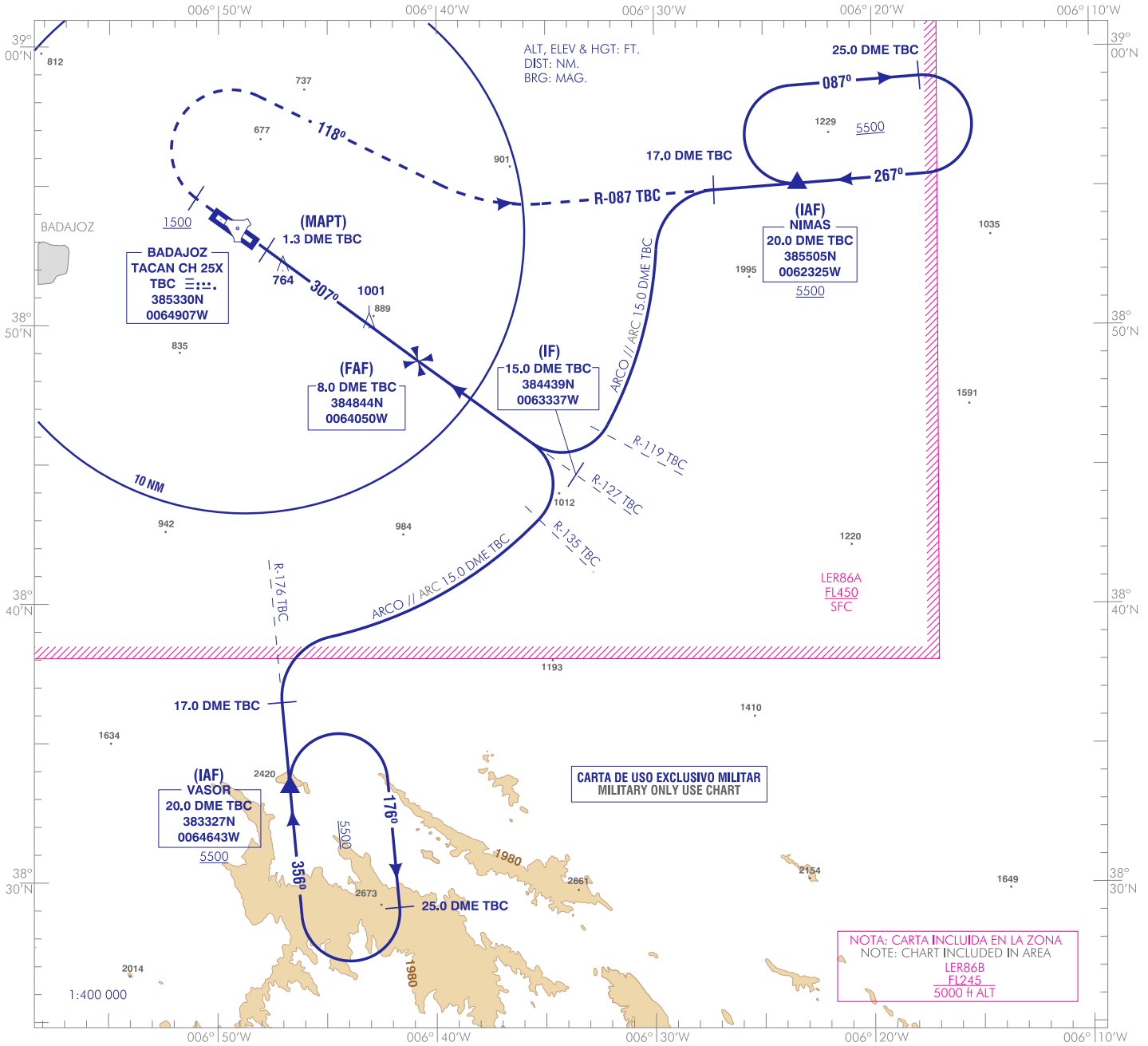


CARTA DE APROXIMACIÓN
POR INSTRUMENTOS-MIPS

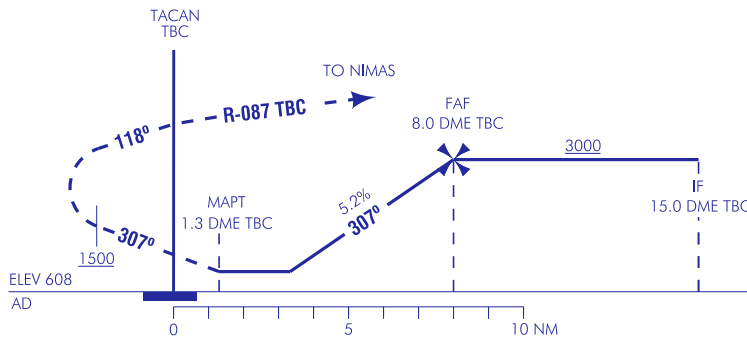
ELEV
608
VAR 1°W (2020)

APP 120.555 C
TWR 122.105 C

BADAJOS/Talavera La Real
TACAN
RWY 31



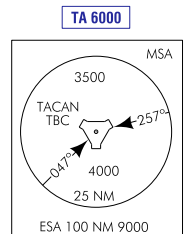
FRUSTRADA: ASCENDER EN RUMBO MAGNÉTICO 307° A 1500. VIRAR A LA DERECHA EN RUMBO MAGNÉTICO 118° PARA INTERCEPTAR Y SEGUIR R-087 TBC, PROCEDER A NIMAS, INCORPORARSE A LA ESPERA A 5500.
MISSED APCH: CLIMB IN MAGNETIC HEADING 307° UP TO 1500. TURN RIGHT IN MAGNETIC HEADING 118° TO INTERCEPT AND FOLLOW R-087 TBC, PROCEED TO NIMAS, JOIN TO THE HOLDING AT 5500.



HGT REF ELEV AD				
CAT	A	B	C	HPMA
S-TACAN	1150-1.2*	1150-2.0*	1150-2.4*	
	542 (600-1.2)	542 (600-2.0)	542 (600-2.4)	
CIRCUITO CIRCLING	1250/1.6	1340/3.2	1340/3.6	1250/3.2
	640 (700-1.6)	740 (800-3.2)	740 (800-3.6)	640 (700-3.2)
* CUANDO ALS U/S INCREMENTAR VIS EN 0.4 km * WHEN ALS U/S INCREASE VIS IN 0.4 km				

GS	kt	80	100	120	140	160	180
FAP-THR:	min:s						
FAF-MAPT: 6.7 NM	min:s	5:02	4:01	3:21	2:52	2:31	2:14
ROD: 5.2 %	ft/min	425	531	637	743	849	955

ALT DME (TBC) FNA										
13	12	11	10	9	8	7	6	5	4	3
						2690	2370	2060	1740	1430



CAMBIOS: DECLINACIÓN MAGNÉTICA, RUMBOS, RADIALES, FRECUENCIAS, RENÚMERICACIÓN. CHANGES: MAGNETIC VARIATION, HEADINGS, RADIALS, FREQUENCIES, RENUMBERING.

INTENCIONADAMENTE EN BLANCO
INTENTIONALLY BLANK