

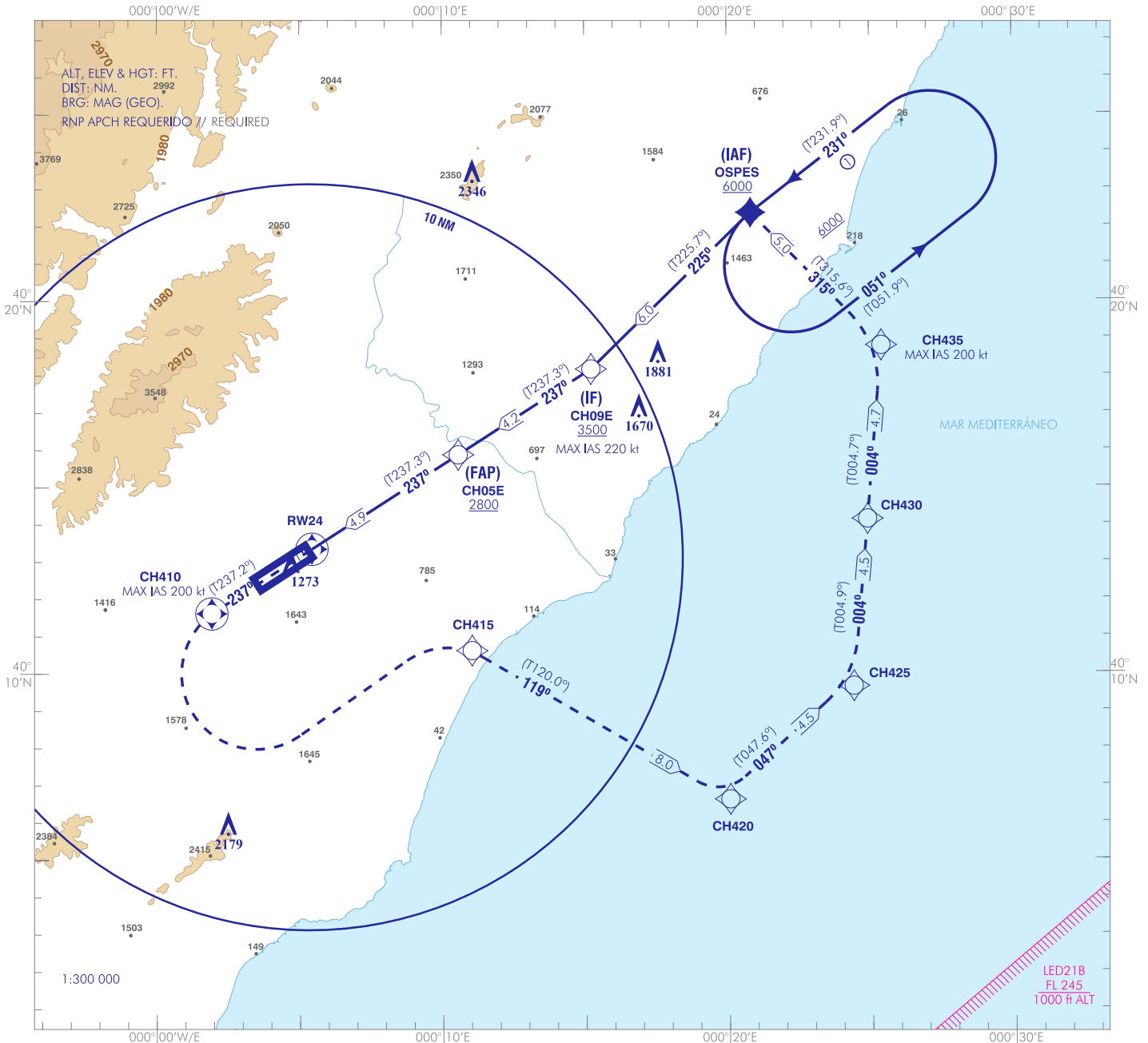
CARTA DE APROXIMACIÓN
POR INSTRUMENTOS-OACI

EGNOS
CH 57286
E24A

ELEV AD
1182
VAR 1°E (2020)

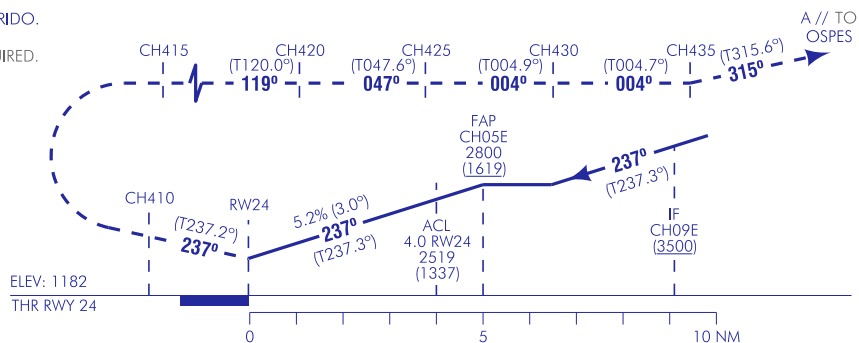
APP 120.100
TWR 120.675
121.825

CASTELLÓN
RNP Z
RWY 24 (LPV ONLY)

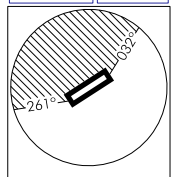


FRUSTRADA: SUBIR EN RUMBO 237° DIRECTO A CH410, VIRAR A LA IZQUIERDA (IAS MAX 200 kt) DIRECTO A CH415. VIRAR A LA DERECHA A CH420. VIRAR A LA IZQUIERDA A CH430. DIRECTO A CH435. VIRAR A LA IZQUIERDA (IAS MAX 200 kt) A OSPES PARA INTEGRARSE A LA ESPERA A 6000 O SUPERIOR.
MISSED APCH: CLIMB HEADING 237° DIRECT TO CH410, TURN LEFT (MAX IAS 200 kt) DIRECT TO CH415. TURN RIGHT TO CH420. TURN LEFT TO CH425. TURN LEFT TO CH430. DIRECT TO CH435. TURN LEFT (MAX IAS 200 kt) TO OSPES TO JOIN THE HOLDING AT 6000 OR ABOVE.

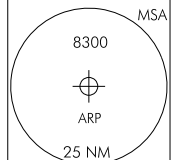
NOTAS:
① ESPERA SOBRE OSPES: RNAV 1 REQUERIDO.
NOTES:
① HOLDING OVER OSPES: RNAV 1 REQUIRED.



LPV RDH 49 TA 6000



NO EN CIRCUITO
NO CIRCLING



HGT REF ELEV THR RWY 24

| OCA/H | | A | B | C | D |
|---|----------|-------------|-------------|-------------|-------------|
| STA | LPV 2.5% | 2269 (1087) | 2281 (1099) | 2289 (1107) | 2300 (1118) |
| | LPV 5.0% | 1469 (307) | 1501 (319) | 1509 (327) | 1520 (338) |
| En circuito (H) sobre Circling (H) over | | 2270 (1090) | 2290 (1110) | 2300 (1120) | |

| GS | kt | 80 | 100 | 120 | 140 | 160 | 180 |
|-------------------|--------|------|------|------|------|------|------|
| FAF-THR: 4.9 NM | min:s | 3:39 | 2:55 | 2:26 | 2:05 | 1:49 | 1:37 |
| FAF-MAPT: | min:s | | | | | | |
| ROD: 5.2% | ft/min | 425 | 531 | 637 | 743 | 849 | 955 |
| ALT/HGT RWY24 FNA | | | | | | | |
| 13 | 12 | 11 | 10 | 9 | 8 | 7 | 6 |
| | | | | | | | |
| | | | | | | | |
| | | | | | | | |
| | | | | | | | |
| | | | | | | | |
| | | | | | | | |

CAMBIOS: TABLA OCA/H.
CHANGES: OCA/H TABLE.

INTENCIONADAMENTE EN BLANCO
INTENTIONALLY BLANK

CASTELLÓN AD

REQUISITOS DE LA BASE DE DATOS AERONÁUTICA
AERONAUTICAL DATABASE REQUIREMENTS

➔ RNP Z RWY 24 (LPV ONLY)

| COORDENADAS WAYPOINTS // WAYPOINTS COORDINATES | |
|--|----------------------------|
| WPT | COORD |
| OSPES (IAF) | 40°22'21.2"N 000°20'49.0"E |
| CH09E (IF) | 40°18'09.8"N 000°15'12.8"E |
| CH05E (FAP) | 40°15'52.3"N 000°10'33.4"E |
| RW24 (LTP) | 40°13'14.5"N 000°05'12.9"E |
| CH410 | 40°11'37.1"N 000°01'55.4"E |
| CH415 | 40°10'37.1"N 000°11'01.7"E |
| CH420 | 40°06'36.9"N 000°20'02.9"E |
| CH425 | 40°09'38.9"N 000°24'22.8"E |
| CH430 | 40°14'07.9"N 000°24'52.8"E |
| CH435 | 40°18'47.2"N 000°25'22.9"E |

| | |
|--|---------------|
| Aproximación final de no precisión (APV SBAS) - Pendiente (Ángulo de descenso) // Non-precision final approach (APV SBAS) - Slope (Descent angle) | 5.24% (3.00°) |
|--|---------------|

| DESCRIPCIÓN TABULAR DEL PROCEDIMIENTO PROCEDURE TABULAR DESCRIPTION | | | | | | | | | | | |
|--|--|--|------------------------|--|---|-------------------------------|---------------------------------------|-----------------------------|----------------------------|-------------------|--|
| Número de serie Serial number | Descriptor de trayectoria Path Terminator | Identificador de punto de recorrido Waypoint identifier | Sobrevuelo Fly-over | Curso/Derrota Course/Track °M (°T) | Variación magnética Magnetic variation | Distancia Distance (NM) | Dirección de viraje Turn direction | Altitud Altitude (ft) | Velocidad Speed (kt) | VPA/TCH (°/ft) | Especificación de navegación Navigation specification |
| OSPES (IAF) | | | | | | | | | | | |
| 001 | IF | OSPES | - | - | -0.7 | - | - | +6000 | - | - | RNP APCH |
| 002 | TF | CH09E | - | 225 (225.7) | -0.7 | 6.0 | - | +3500 | -220 | - | RNP APCH |
| 003 | TF | CH05E | - | 237 (237.3) | -0.7 | 4.2 | - | +2800 | - | - | RNP APCH |
| 004 | TF | RW24 | Y | 237 (237.3) | -0.7 | 4.9 | - | +1231 | - | 3.0/49 | RNP APCH |
| 005 | CF | CH410 | Y | 237 (237.2) | -0.7 | - | - | - | -200 | - | RNP APCH |
| 006 | DF | CH415 | - | - | -0.7 | - | L | - | - | - | RNP APCH |
| 007 | TF | CH420 | - | 119 (120.0) | -0.7 | 8.0 | R | - | - | - | RNP APCH |
| 008 | TF | CH425 | - | 047 (047.6) | -0.7 | 4.5 | - | - | - | - | RNP APCH |
| 009 | TF | CH430 | - | 004 (004.9) | -0.7 | 4.5 | - | - | - | - | RNP APCH |
| 010 | TF | CH435 | - | 004 (004.7) | -0.7 | 4.7 | - | - | -200 | - | RNP APCH |
| 011 | TF | OSPES | - | 315 (315.6) | -0.7 | 5.0 | - | +6000 | - | - | RNP APCH |

| CIRCUITOS DE ESPERA // HOLDING PATTERN | | | | | | | | | | |
|--|--|------------------------|--|---|---|---------------------------------------|-------------------------------------|-------------------------------------|----------------------------|--|
| Descriptor de trayectoria Path terminator | Identificador de punto de recorrido Waypoint identifier | Sobrevuelo Fly-over | Curso/Derrota Course/Track °M (°T) | Variación magnética Magnetic variation | Distancia/ Tiempo de alejamiento Distance/ Outbound time | Dirección de viraje Turn direction | Altitud MNM MNM altitude (ft) | Altitud MAX MAX altitude (ft) | Velocidad Speed (kt) | Especificación de navegación Navigation specification |
| HM | OSPES | - | 231 (231.9) | -0.7 | 1 min | L | +6000 | - | - | RNAV 1 |

CASTELLÓN AD

REQUISITOS DE LA BASE DE DATOS AERONÁUTICA
 AERONAUTICAL DATABASE REQUIREMENTS

| SBAS LPV FAS DATA BLOCK | | |
|--|--|-------------------|
| FAS DATA BLOCK | | |
| 1 | OPERATION MODE | 00 |
| 2 | SERVICE PROVIDER IDENTIFIER | 01* |
| 3 | AIRPORT IDENTIFIER | LECH |
| 4 | RUNWAY | 24 |
| 5 | APPROACH PERFORMANCE DESIGNATOR | 0** |
| 6 | ROUTE INDICATOR | Z |
| 7 | REFERENCE PATH DATA SELECTOR (RPDS) | 00 |
| 8 | REFERENCE PATH IDENTIFIER | E24A*** |
| 9 | LANDING THRESHOLD POINT (LTP) – LATITUDE | 401314.5100N |
| 10 | LANDING THRESHOLD POINT (LTP) – LONGITUDE | 0000512.8900E |
| 11 | LTP HEIGHT ABOVE ELLIPSOID (HAE) | +04107 (410.7 m) |
| 12 | FLIGHT PATH ALIGNMENT POINT (FPAP) – LATITUDE | 401227.1400N |
| 13 | FLIGHT PATH ALIGNMENT POINT (FPAP) – LONGITUDE | 0000336.8700E |
| 14 | THRESHOLD CROSSING HEIGHT (TCH) | 0015.00 |
| 15 | TCH UNIT SELECTOR | M |
| 16 | GLIDE PATH ANGLE | 03.00 |
| 17 | COURSE WIDTH AT THRESHOLD | 105.00 |
| 18 | LENGTH OFFSET | 0000 |
| 19 | HORIZONTAL ALERT LIMIT (HAL) | 40 |
| 20 | VERTICAL ALERT LIMIT (VAL) | 50 |
| 21 | PRECISION APPROACH PATH POINT CRC REMINDER | 7BEDD76A |
| NON - FAS DATA BLOCK | | |
| 22 | ICAO CODE | LE |
| 23 | LTP ORTHOMETRIC HEIGHT | +03602 (0360.2 m) |
| NOTAS // NOTES: *: Este valor "01" identifica a EGNOS como proveedor de servicio. // This value "01" identifies EGNOS as service provider. **: LPV. ***: "E" se refiere a EGNOS. // "E" refers to EGNOS. | | |