

CARTA DE SALIDA NORMALIZADA
VUELO POR INSTRUMENTOS (SID)-OACI

VAR 2°E (2025)

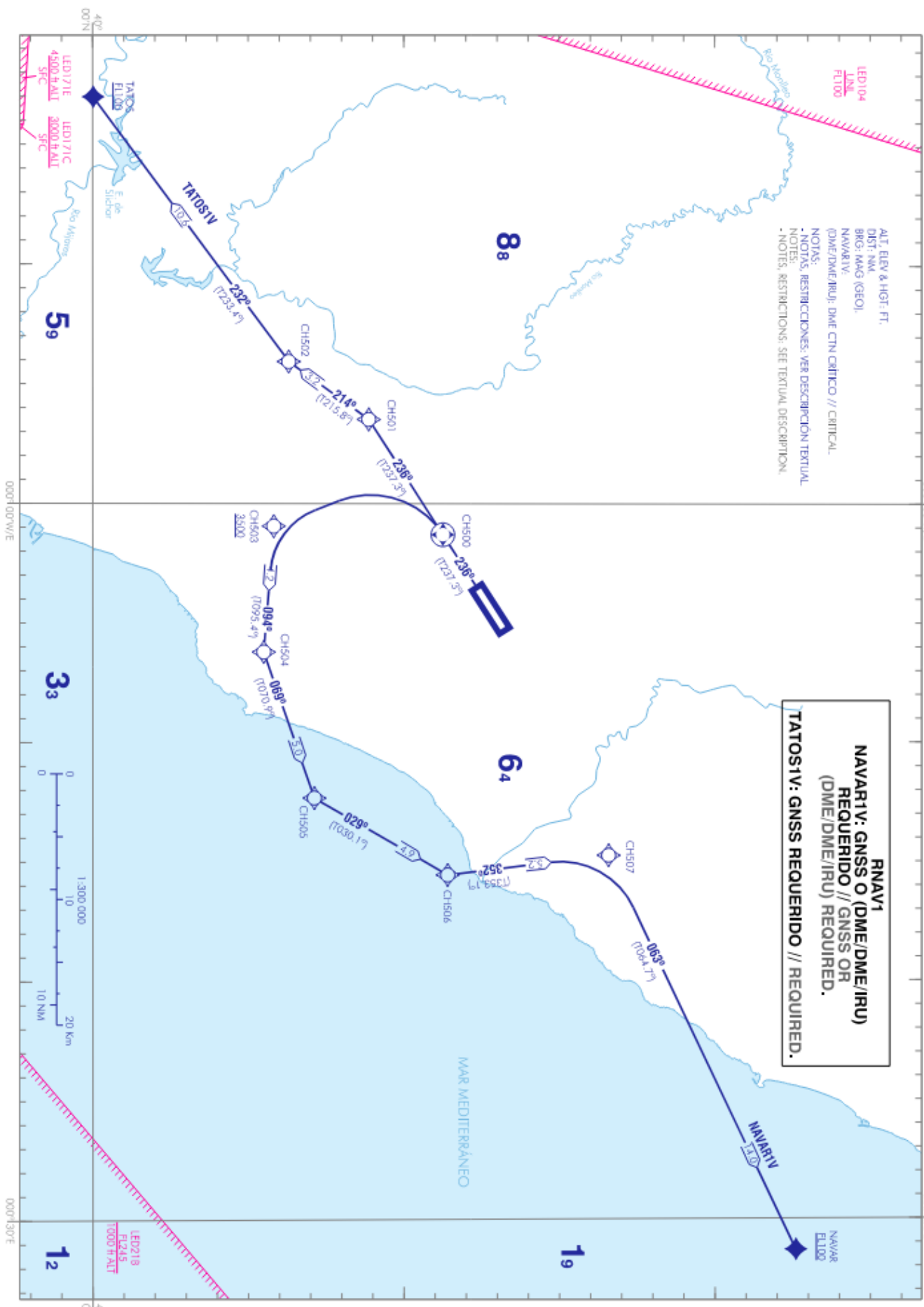
TA 6000 ft

App 120.100 MHz
TW/R 120.680 C

CASTELLÓN
RNAV Rwy 24
NAVARTV TATOSIV

ALT. ELEV & HGT. FT.
DIST. NMI
BRG. MAG (GEO)
NAVARTV
(DME/DME/IRU): DME CTN CRÍTICO // CRITICAL
NOTAS:
- NOTAS, RESTRICCIONES, VER DESCRIPCIÓN TEXTUAL.
- NOTES, RESTRICTIONS, SEE TEXTUAL DESCRIPTION.

RNAV1
NAVARTV: GNSS O (DME/DME/IRU)
REQUERIDO // GNSS OR
(DME/DME/IRU) REQUIRED.
TATOSIV: GNSS REQUERIDO // REQUIRED.



NEW CHART:
CHANGES:

WAYPOINTS COORDINATES

WPT	COORD
CH500	401114.4N 0000109.4E
CH501	400855.2N 0000331.7W
CH502	400620.5N 0000556.8W
CH503	400557.0N 0000043.9E
CH504	400533.1N 0000612.8E
CH505	400710.5N 0001219.7E
CH506	401127.4N 0001533.7E
CH507	401637.9N 0001444.7E
NAVAR	402236.3N 0003118.3E
TATOS	400000.0N 0001701.5W

CRITICAL DME

FACILITY (ID)	FREQ / CH	COORD
CASTELLÓN (CTN)	117.05 MHz CH117Y	401307.7258N 0000521.0567E

STANDARD INSTRUMENT DEPARTURES (SID) RUNWAY 24

NOTES APPLICABLE TO ALL SID:

- RNAV1.
- Climb gradients due to operational reasons.
- SPEED CONTROL:
 - MAX IAS 250 kt until leaving FL100.

PROCEDURE TABULAR DESCRIPTION

NAVAR1V

GNSS o (DME/DME/IRU) requerido // required.
Minimum climb gradient of 5.1% up to 5000 ft.
(DME/DME/IRU): DME CTN critical.

Serial number	Path Terminator	Waypoint identifier	Fly-over	Course/Track °M (°T)	Magnetic variation	Distance (NM)	Turn direction	Altitude (ft)	Speed (kt)	VPA/TCH (°/ft)	Navegation specification
001	CF	CH500	Y	236 (237.3)	-1.5	-	-	-	-	-	RNAV 1
002	DF	CH503	-	-	-1.5	-	L	+3500	-	-	RNAV 1
003	TF	CH504	-	094 (095.4)	-1.5	4.2	-	-	-	-	RNAV 1
004	TF	CH505	-	069 (070.9)	-1.5	5.0	-	-	-	-	RNAV 1
005	TF	CH506	-	029 (030.1)	-1.5	4.9	-	-	-	-	RNAV 1
006	TF	CH507	-	352 (353.1)	-1.5	5.2	-	-	-	-	RNAV 1
007	TF	NAVAR	-	063 (064.7)	-1.5	14.0	-	+FL100	-	-	RNAV 1

TATOS1V

GNSS required.
Minimum climb gradient of 7.3% up to FL100.

Serial number	Path Terminator	Waypoint identifier	Fly-over	Course/Track °M (°T)	Magnetic variation	Distance (NM)	Turn direction	Altitude (ft)	Speed (kt)	VPA/TCH (°/ft)	Navegation specification
001	CF	CH501	-	236 (237.3)	-1.5	-	-	-	-	-	RNAV 1
002	TF	CH502	-	214 (215.8)	-1.5	3.2	-	-	-	-	RNAV 1
003	TF	TATOS	-	232 (233.4)	-1.5	10.6	-	+FL100	-	-	RNAV 1

SIGNIFICANT OBSTACLES

OBST	RWY	LAT	LONG	HGT (ft)	ELEV (ft)
Cota // Natural highpoint	24	400528.9N	0000324.5W	0	2341
Cota // Natural highpoint	24	400507.1N	0000151.7W	0	2381
Cota // Natural highpoint	24	401801.7N	0000036.4W	0	3144
Cota // Natural highpoint	24	402109.4N	0000545.8W	0	3013
Cota // Natural highpoint	24	401908.8N	0000039.6W	0	3040
Cota // Natural highpoint	24	401751.4N	0000510.3W	0	3545
Cota // Natural highpoint	24	401855.6N	0000855.6W	0	3048
Cota // Natural highpoint	24	401930.8N	0000733.7W	0	3086
Cota // Natural highpoint	24	401656.1N	0000555.8W	0	2688