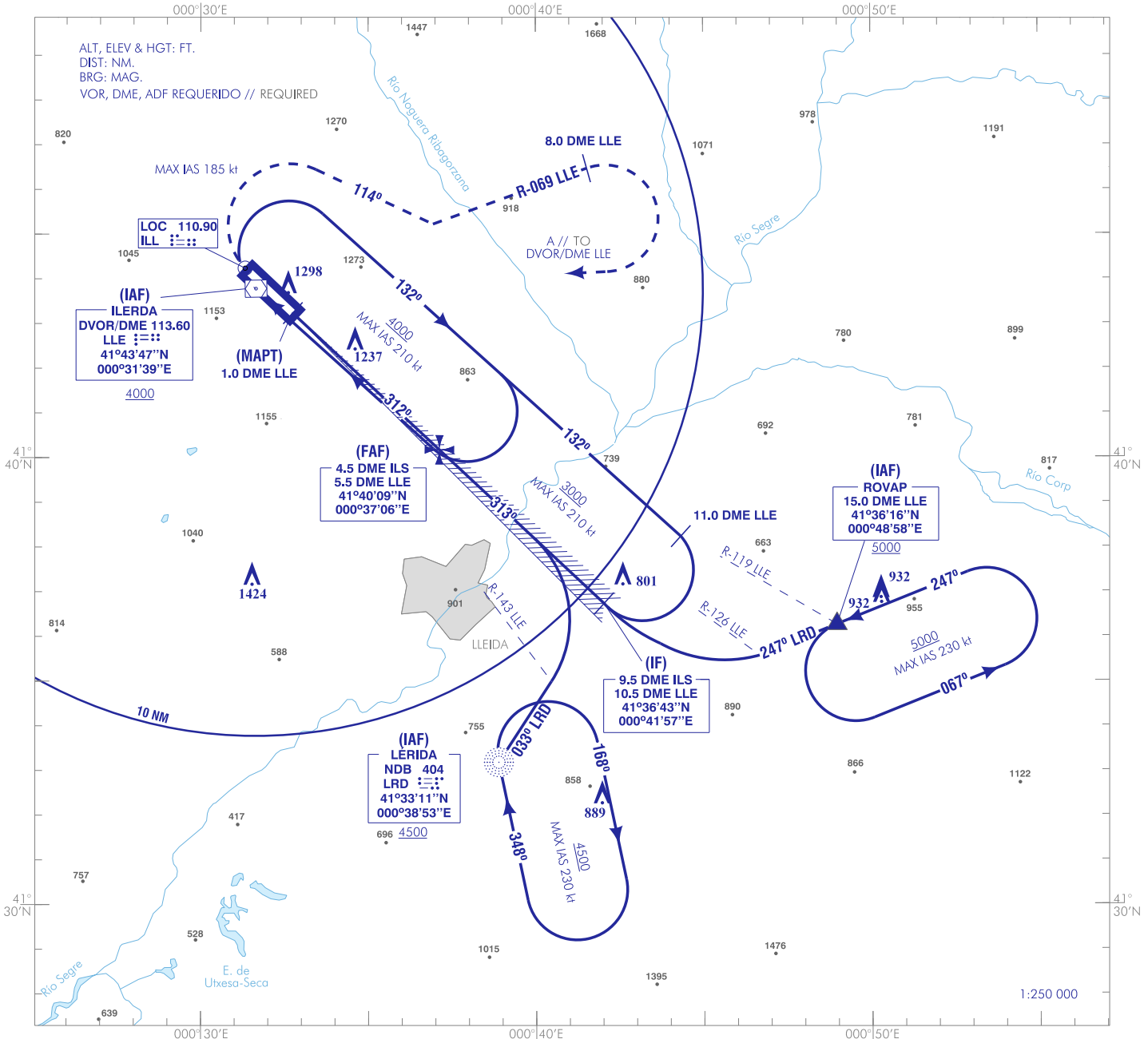


CARTA DE APROXIMACIÓN  
POR INSTRUMENTOS-OACI

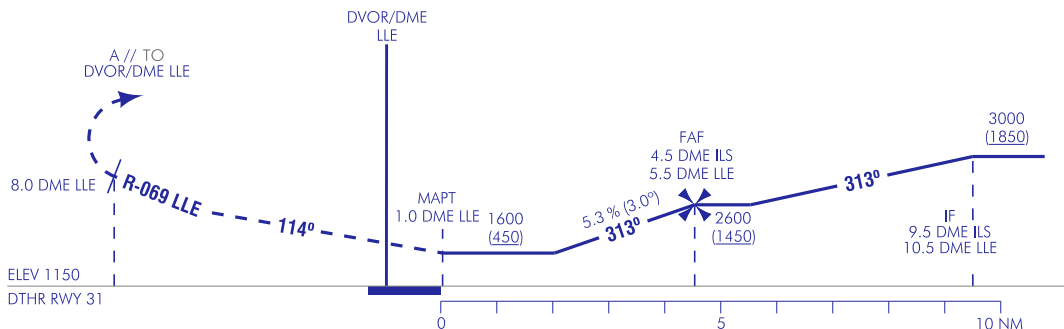
ELEV AD  
1152  
VAR 1°E (2020)

APP 127.700  
TWR 121.325  
GMC 121.625

LLEIDA/Alguaire  
LOC  
RWY 31



**FRUSTRADA:** VIRAR A LA DERECHA (IAS MAX 185 kt) A RUMBO MAGNÉTICO 114° PARA INTERCEPTAR Y SEGUIR R-069 LLE HASTA 8.0 DME LLE. VIRAR A LA DERECHA DIRECTO A DVOR/DME LLE PARA INCORPORARSE A LA ESPERA A 4000.  
**MISSED APCH:** TURN RIGHT (MAX IAS 185 kt) TO MAGNETIC HEADING 114° TO INTERCEPT AND FOLLOW R-069 LLE TO 8.0 DME LLE. TURN RIGHT DIRECT TO DVOR/DME LLE TO JOIN THE HOLDING TO 4000.



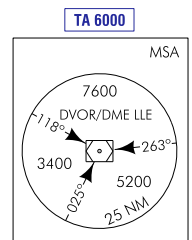
CAMBIOS: ALTITUD SECTOR MSA 025°-118°.  
CHANGES: MSA ALTITUDE SECTOR 025°-118°.

| HGT REF ELEV AD                        |      | A          | B | C          | D |
|--|------|------------|---|------------|---|
| OCA/H                                  | 2.5% | 1600 (450) |   |            |   |
| STA                                    |      |            |   |            |   |
| En círculo (H) sobre Circling (H) over |      | 1650 (500) |   | 1840 (690) |   |

| GS         | kt     | 80   | 100 | 120 | 140 | 160 | 180 |
|------------|--------|--|-----|-----|-----|-----|-----|
| FAF-THR:   | min:s  |  |     |     |     |     |     |
| FAF-MAPT:  | min:s  | NO AUTORIZADO EL CRONOMETRAJE // TIMING NOT AUTHORIZED |     |     |     |     |     |
| ROD: 5.3 % | ft/min | 430  | 537 | 645 | 752 | 859 | 967 |

| ALT/HGT DME (ILS) FNA |    |    |    |   |   |   |   |   |             |
|-----------------------|----|----|----|---|---|---|---|---|-------------|
| 13                    | 12 | 11 | 10 | 9 | 8 | 7 | 6 | 5 | 4           |
|                       |    |    |    |   |   |   |   |   | 2490 (1340) |
|                       |    |    |    |   |   |   |   |   | 2170 (1020) |
|                       |    |    |    |   |   |   |   |   | 1850 (700)  |



LLEIDA/Alguaire AD

REQUISITOS DE LA BASE DE DATOS AERONÁUTICA  
 AERONAUTICAL DATABASE REQUIREMENTS

PROCEDIMIENTOS DE APROXIMACIÓN POR INSTRUMENTOS // INSTRUMENT APPROACH PROCEDURES

LOC RWY 31

| PUNTO<br>POINT   | LATITUD<br>LATITUDE | LONGITUD<br>LONGITUDE | AZIMUT VERDADERO<br>TRUE BEARING | DISTANCIA DME<br>DISTANCE DME<br>(NM) |
|--|---------------------|-----------------------|----------------------------------|---------------------------------------|
| DVOR/DME LLE (IAF)   | 41°43'47.2"N        | 000°31'38.6"E         | –                                | –                                     |
| NDB LRD (IAF)  | 41°33'10.5"N        | 000°38'52.9"E         | –                                | –                                     |
| ROVAP (IAF)  | 41°36'15.6"N        | 000°48'57.5"E         | 119.99° (LLE)                    | 15.00 DME LLE                         |
| IF   | 41°36'43.1"N        | 000°41'56.7"E         | 133.33° (ILL)                    | 9.50 DME ILS                          |
| FAF  | 41°40'09.3"N        | 000°37'06.0"E         | 133.33° (ILL)                    | 4.50 DME ILS                          |
| MAPT   | 41°43'13.9"N        | 000°32'45.2"E         | 133.33° (ILL)                    | 1.00 DME LLE                          |
| Aproximación final de no precisión - Pendiente (Ángulo de descenso) //<br>Non-precision final approach - Slope (Descent angle) |                     |                       |                                  | 5.30% (3.04°)                         |