

PLANO DE AERÓDROMO-OACI

37°11'19"N
003°46'38"W

ELEV 567

TWR 118.850
GMC 121.925

GRANADA
Federico García Lorca
Granada - Jaén

RWY	DIRECCIÓN DIRECTION	THR	RESISTENCIA STRENGTH
09	090°	37°11'19.01"N 003°47'37.25"W	RWY: PCN 101/F/A/W/T. Primeros // First 170 m PCN 34/R/A/W/T. TWY: T1, T2, E3, E4: PCN 101/F/A/W/T. E1, E2, E5, E6: PCN 118/F/A/W/T. APN: PCN 81/R/A/W/T.
27	270°	37°11'19.89"N 003°45'39.68"W	PRKG: 1B, 2, 4, 5, 7, 7H, 8: PCN 34/R/A/W/T; 1, 10, 10A, 10B, 10H, 11, 11A, 11B, 11H: PCN 61/R/A/W/T; 20 a // to 45: PCN 79/R/A/W/T. ZONA DE DESHIELO // DE-ICING AREA: PCN 71/R/B/W/T.

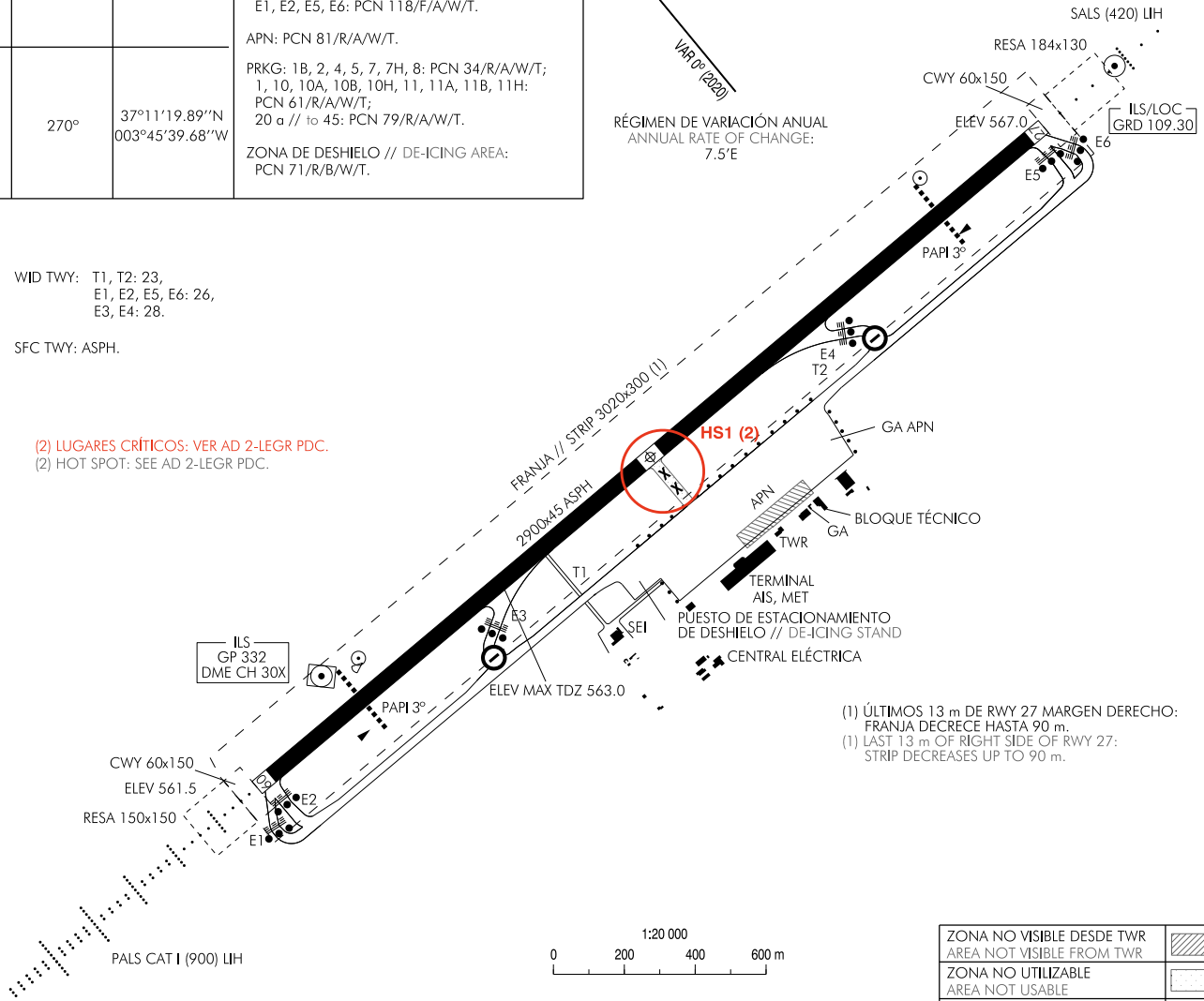
ELEV, DIM: M
BRG: MAG

RÉGIMEN DE VARIACIÓN ANUAL
ANNUAL RATE OF CHANGE:
7.5'E

WID TWY: T1, T2, 23,
E1, E2, E5, E6: 26,
E3, E4: 28.

SFC TWY: ASPH.

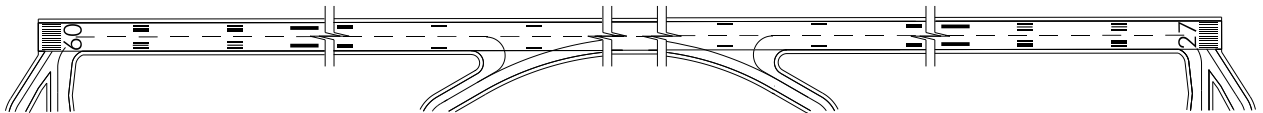
(2) LUGARES CRÍTICOS: VER AD 2-LEGR PDC.
(2) HOT SPOT: SEE AD 2-LEGR PDC.



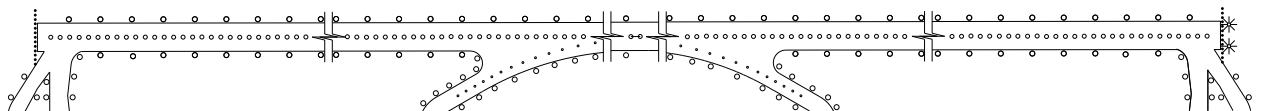
(1) ÚLTIMOS 13 m DE RWY 27 MARGEN DERECHO:
FRANJA DECRECE HASTA 90 m.
(1) LAST 13 m OF RIGHT SIDE OF RWY 27:
STRIP DECREASES UP TO 90 m.

ZONA NO VISIBLE DESDE TWR AREA NOT VISIBLE FROM TWR	
ZONA NO UTILIZABLE AREA NOT USABLE	
TWY CERRADA TWY CLOSED	X

SGL RWY & TWY



LGT RWY & TWY



CAMBIOS: ACTUALIZACIÓN COORD THR 27.
CHANGES: UPDATE OF COORD THR 27.

INTENCIONADAMENTE EN BLANCO
INTENTIONALLY BLANK