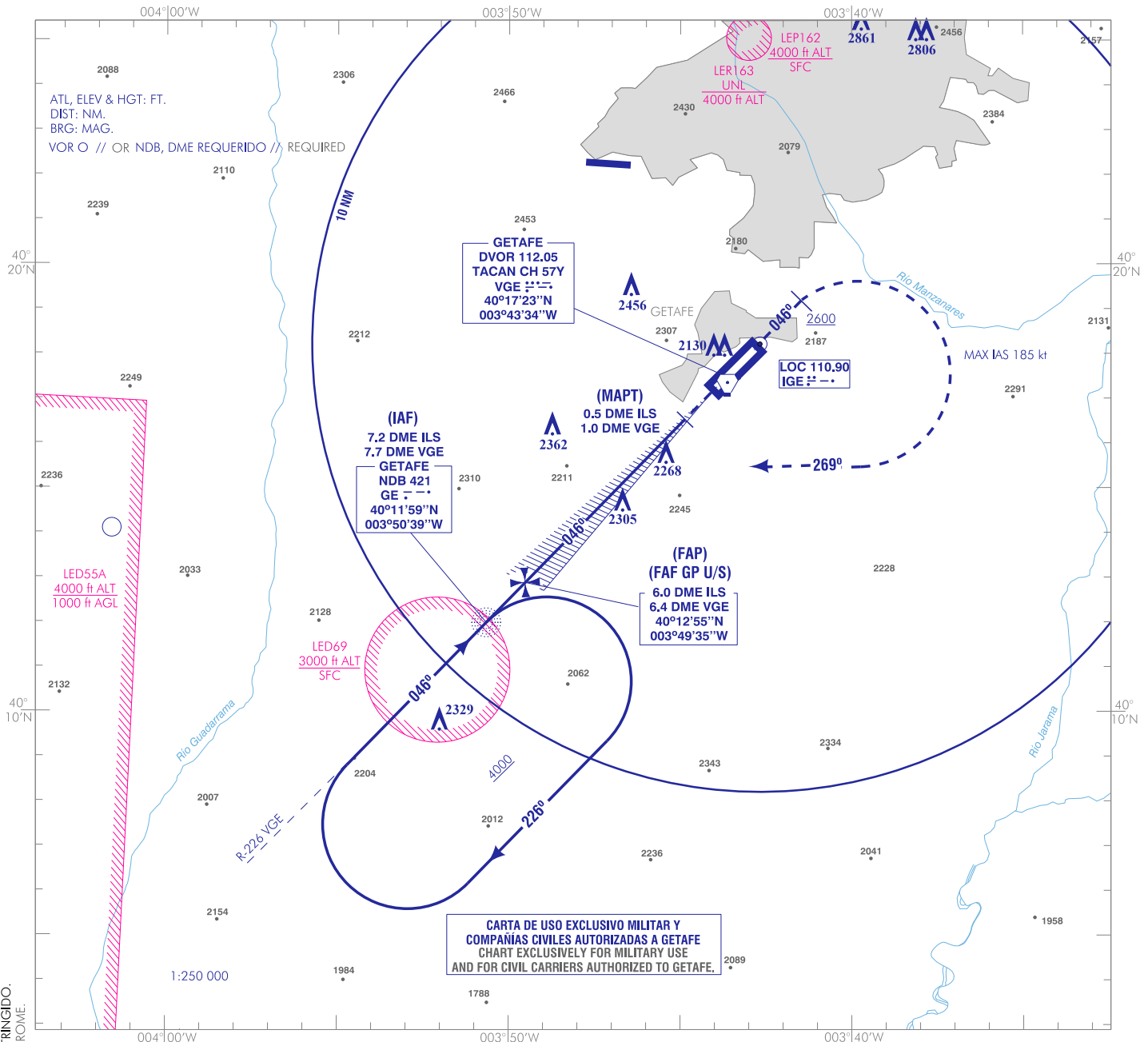


CARTA DE APROXIMACIÓN
 POR INSTRUMENTOS-MIPS

ELEV AD
 2032
 VAR 1°W (2015)

APP DEP W 124.230
 TWR 129.925
 GMC 121.600

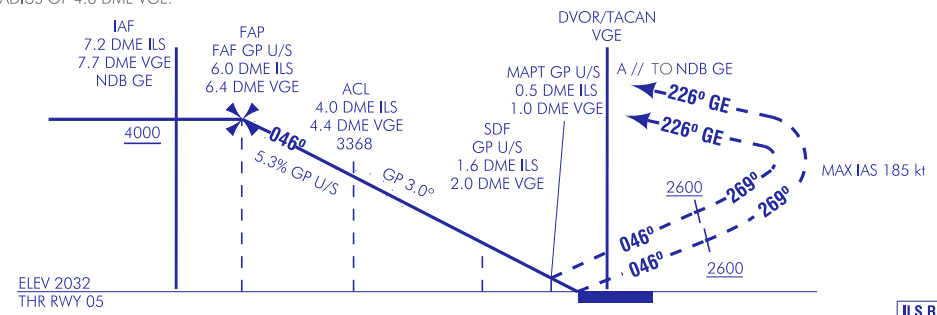
MADRID/Getafe
 ILS o LOC
 RWY 05



CARTA DE USO EXCLUSIVO MILITAR Y
 COMPAÑÍAS CIVILES AUTORIZADAS A GETAFE
 CHART EXCLUSIVELY FOR MILITARY USE
 AND FOR CIVIL CARRIERS AUTHORIZED TO GETAFE.

CAMBIOS: VOR/TACAN VGE POR DVOR/TACAN VGE, CAMBIO EDITORIAL, AERÓDROMO RESTRINGIDO.
 CHANGES: VOR/TACAN VGE BY DVOR/TACAN VGE, EDITORIAL CHANGE, RESTRICTED AERODROME.

FRUSTRADA: ASCENDER EN RUMBO MAGNÉTICO 046° HASTA ALCANZAR 2600. VIRAR A LA DERECHA (IAS MAX 185 kt) PARA SEGUIR RUMBO MAGNÉTICO 269° HASTA INTERCEPTAR Y SEGUIR RUTA MAGNÉTICA 226° GE HASTA EL IAF NDB GE. ASCENDER A 4000 E INTEGRARSE A LA ESPERA.
MISSED APCH: CLIMBING ON MAGNETIC HEADING 046° UP TO REACH 2600. TURN RIGHT (MAX IAS 185 kt) TO FOLLOW MAGNETIC HEADING 269° TO INTERCEPT AND FOLLOW MAGNETIC TRACK 226° GE UP TO IAF NDB GE. CLIMBING UP TO 4000 TO JOIN THE HOLDING.
- RESTRICCIÓN: EN CIRCUITO MANTENERSE DENTRO DE UN RADIO DE 4.8 DME VG.
- RESTRICTION: CIRCLING REMAIN WITHIN A RADIUS OF 4.8 DME VG.



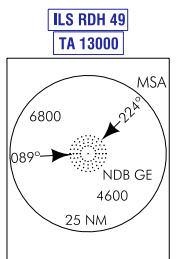
HGT REF ELEV THR RWY 05

CAT	A	B	C	D	HPMA
S-ILS	2232/ 0.8*		2232/ 1.2		
	200 (200-0.8)		200 (200-1.2)		
S-LOC/DME	NO // NOT AVBL				
S-LOC	2590 / 1.2* 558 (600-1.2)	2590/2.0* 558 (600-2.0)		2590 / 2.4* 558 (600-2.4)	
CIRCUITO // CIRCLING	2760 / 1.6 728 (800-1.6)	2860/4.0 828 (900-4.0)	2860/4.4 828 (900-4.4)	2760-3.6 728 (800-3.6)	

*CUANDO // WHEN ALS U/S INCREMENTAR // INCREASE VIS EN // BY 0.4 km

GS	kt	80	100	120	140	160	180
FAP-THR:	min:s						
FAF-MAPT: 5.5 NM	min:s	4:08	3:18	2:45	2:21	2:04	1:50
ROD: 5.3%	ft/min	426	533	639	746	852	959

ALT DME (ILS) FNA GP U/S												
13 DME	12 DME	11 DME	10 DME	9 DME	8 DME	7 DME	6 DME	5 NM	4 DME	3 DME	2 DME	1 DME
								3690	3370	3050	2730	2410



INTENCIONADAMENTE EN BLANCO
INTENTIONALLY BLANK