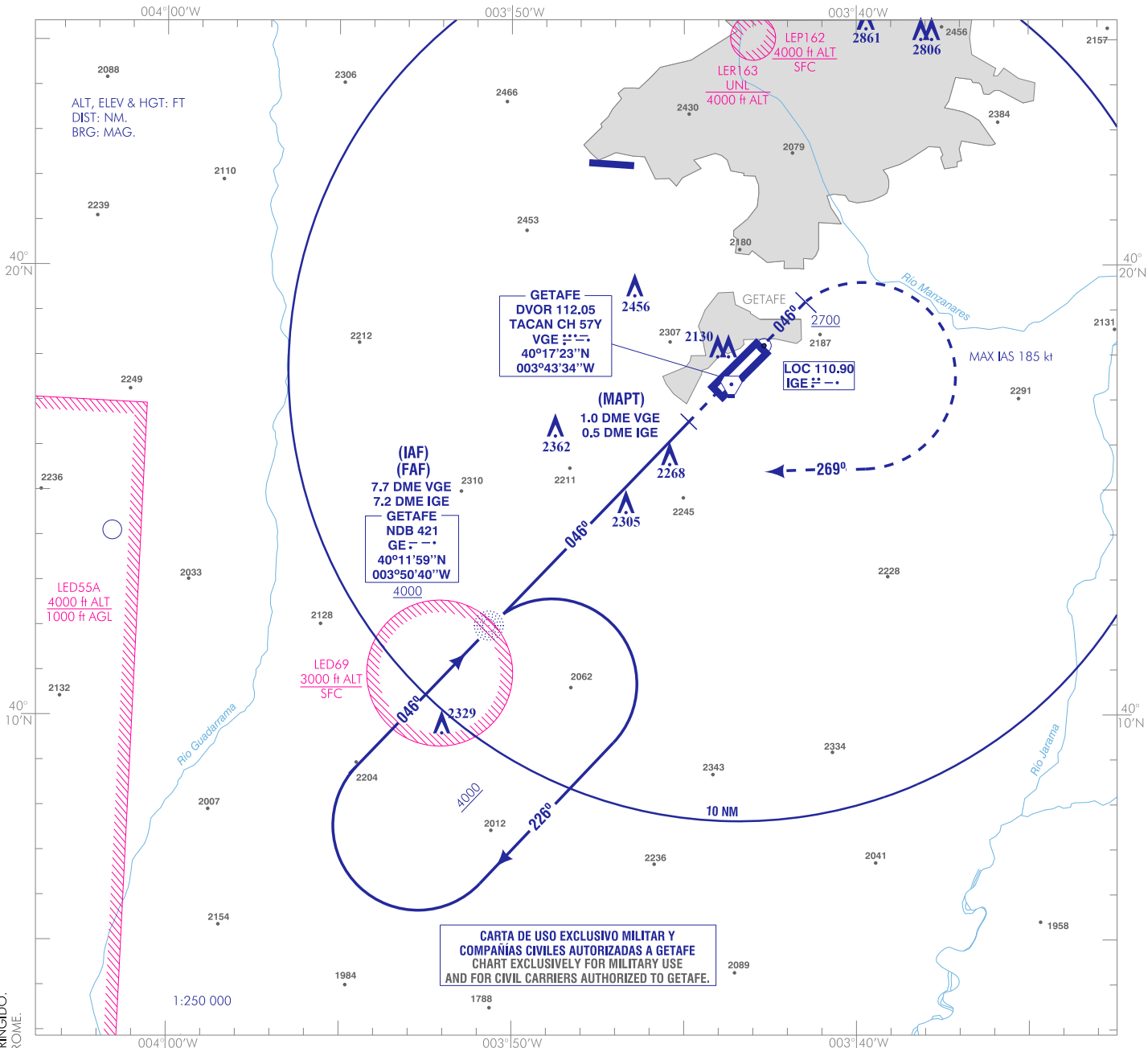


CARTA DE APROXIMACIÓN
 POR INSTRUMENTOS-MIPS

ELEV AD
 2032
 VAR 1°W (2015)

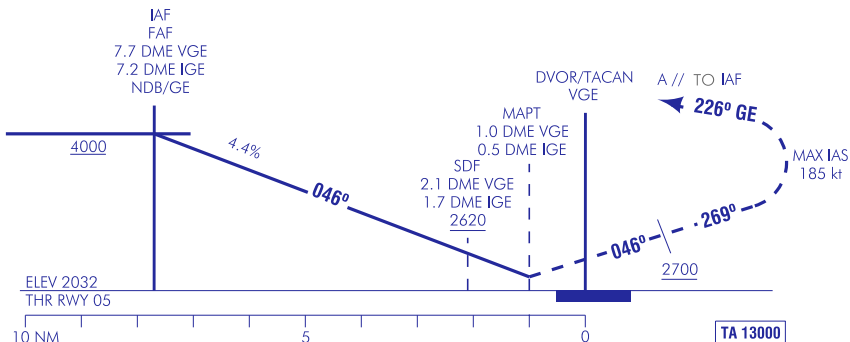
APP DEP W 124.230
 TWR 129.925
 GMC 121.600

MADRID/Getafe
 NDB
 RWY 05



CARTA DE USO EXCLUSIVO MILITAR Y
 COMPAÑÍAS CIVILES AUTORIZADAS A GETAFE
 CHART EXCLUSIVELY FOR MILITARY USE
 AND FOR CIVIL CARRIERS AUTHORIZED TO GETAFE.

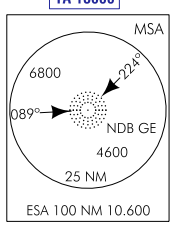
FRUSTRADA: ASCENDER EN RUMBO MAGNÉTICO 046° HASTA ALCANZAR 2700. VIRAR A LA DERECHA (IAS MAX 185 kt) PARA SEGUIR RUMBO MAGNÉTICO 269° PARA INTERCEPTAR Y SEGUIR RUTA MAGNÉTICA 226° GE HASTA EL IAF NDB GE. ASCENDER A 4000 E INTEGRARSE A LA ESPERA.
MISSED APCH: CLIMBING ON MAGNETIC HEADING 046° UP TO REACH 2700. TURN RIGHT (MAX IAS 185 kt) TO FOLLOW MAGNETIC HEADING 269° TO INTERCEPT AND FOLLOW MAGNETIC TRACK 226° GE UP TO IAF NDB GE. CLIMBING UP TO 4000 TO JOIN THE HOLDING.
 - RESTRICCIÓN: EN CIRCUITO MANTENERSE DENTRO DE UN RADIO DE 4.8 DME VGE.
 - RESTRICTION: CIRCLING REMAIN WITHIN A RADIUS OF 4.8 DME VGE.



HGT REF ELEV AD					
CAT	A	B	C	D	HPMA
S-NDB	2620 / 1.2* 588 (600-1.2)		2620/2.0* 588 (600-2.0)		2620/2.4* 588 (600-2.4)
S-NDB/DME	NO // NOT AVBL				
CIRCUITO // CIRCLING	2760 / 1.6 728 (800-1.6)	2860/4.0 828 (900-4.0)	2860/4.4 828 (900-4.4)	2760-3.6 728 (800-3.6)	

*CUANDO // WHEN ALS U/S INCREMENTAR // INCREASE VIS EN // BY 0.4 km

GS	kt	80	100	120	140	160	180	
FAP-THR:	mins:							
FAP-MAPT: 6.7 NM	mins:	5:02	4:01	3:21	2:52	2:31	2:14	
ROD: 4.4%	ft/min	355	444	532	621	710	798	
ALT DME (VGE) FNA								
		7 DME	6 DME	5 DME	4 DME	3 DME	2 DME	1 DME
		3820	3550	3290	3020	2750	2490	
ALT DME (IGE) FNA								
		3950	3690	3420	3150	2890	2620	



CAMBIOS: VOR/TACAN VGE POR DVOR/TACAN VGE, CAMBIO EDITORIAL, AERÓDROMO RESTRINGIDO. CHANGES: VOR/TACAN VGE BY DVOR/TACAN VGE, EDITORIAL CHANGE, RESTRICTED AERODROME.

INTENCIONADAMENTE EN BLANCO
INTENTIONALLY BLANK